

# 46FT 1975 HATTERAS CONVERTIBLE — HATTERAS



**Builder:** HATTERAS

**Year Built:** 1975

**Model:** Motor Yacht

**Price:** PRICE ON APPLICATION

**Location:** United States

**LOA:** 46' 0" (14.02m)

**Beam:** 14' 9" (4.50m)

**Max Draft:** 4' 2" (1.27m)

**Cruise Speed:** 19 Kts. (22 MPH)

**Max Speed:** 23 Kts. (26 MPH)

Our experienced yacht broker, Andrey Shestakov, will help you choose and buy a yacht that best suits your needs 46ft 1975 Hatteras Convertible — HATTERAS from our catalogue. Presently, at Shestakov Yacht Sales Inc., we have a wide variety of yachts available on our sale's list. We also work in close contact with all the big yacht manufacturers from all over the world.

If you would like to buy a yacht 46ft 1975 Hatteras Convertible — HATTERAS or would like help answering any questions concerning purchasing, selling or chartering a yacht, please call +1(954)274-4435

# TABLE OF CONTENTS

|                                     |    |
|-------------------------------------|----|
| TABLE OF CONTENTS                   | 2  |
| SPECIFICATIONS                      | 5  |
| Basic Information                   | 5  |
| Dimensions                          | 5  |
| Speed, Capacities and Weight        | 5  |
| Accommodations                      | 5  |
| Hull and Deck Information           | 5  |
| Engine Information                  | 6  |
| PHOTOS                              | 7  |
| Starboard Profile                   | 7  |
| Outriggers                          | 7  |
| Starboard Aft View                  | 7  |
| Starboard deck and bridge           | 7  |
| Starboard salon window              | 8  |
| Starboard Bow                       | 8  |
| Starboard Hull                      | 8  |
| Cockpit View                        | 8  |
| Transom View                        | 8  |
| Port Side                           | 8  |
| Bow facing aft                      | 9  |
| Port side from bow                  | 9  |
| Bridge Access from Cockpit          | 9  |
| Cockpit overhang                    | 9  |
| Rod Holder                          | 9  |
| Captain/Companion Seating on Bridge | 9  |
| Helm Station 1                      | 10 |
| Helm Station 2                      | 10 |
| Furuno Radar                        | 10 |

|                             |    |
|-----------------------------|----|
| Bridge Forward Helm Seating | 10 |
| Furuno GPS                  | 10 |
| Auto Pilot & GPS            | 10 |
| Helm and Seating            | 11 |
| Bow from Bridge             | 11 |
| Radar                       | 11 |
| Half Tower                  | 11 |
| Shore Power                 | 11 |
| Salon Entrance              | 11 |
| Port Side Salon             | 12 |
| Starboard Side Salon        | 12 |
| Salon Station               | 12 |
| Salon Generator Control     | 12 |
| Power Service               | 13 |
| Salon VHF                   | 13 |
| Salon Station 2             | 13 |
| Salon Station 3             | 13 |
| New Salon A/C               | 14 |
| Salon Storage               | 14 |
| Salon Entrance to Galley    | 14 |
| Galley 1                    | 14 |
| Galley 2                    | 15 |
| Master Stateroom            | 15 |
| Master Stateroom Closet     | 15 |
| Master Stateroom Head 1     | 15 |
| Master Stateroom Head 2     | 16 |
| Master Stateroom Shower     | 16 |
| Forward Stateroom 2         | 16 |
| Forward Stateroom 1         | 16 |

---

|                            |    |
|----------------------------|----|
| Guest Head                 | 17 |
| Salon facing Aft           | 17 |
| Salon Rodholders           | 17 |
| Phasor Generator           | 17 |
| Headliner (good condition) | 18 |
| CONTACTS                   | 19 |
| Contact details            | 19 |
| Telephones                 | 19 |
| Office hours               | 19 |
| Address                    | 19 |

---

# SPECIFICATIONS

---

## Basic Information

---

**Category:** Motor Yacht

**Sub Category:** Convertible

**Model Year:** 1975

**Year Built:** 1975

**Country:** United States

## Dimensions

---

**LOA:** 46' 0" (14.02m)

**Beam:** 14' 9" (4.50m)

**Max Draft:** 4' 2" (1.27m)

**Clearance:** 13' 8" (4.17m)

**MFG Length:** 46' 2" (14.07m)

## Speed, Capacities and Weight

---

**Cruise Speed:** 19 Kts. (22 MPH)

**Max Speed:** 23 Kts. (26 MPH)

**Displacement:** 41000 Pounds

**Water Capacity:** 180 Gallons

**Fuel Capacity:** 650 Gallons

## Accommodations

---

**Total Cabins:** 2

**Total Berths:** 3

**Total Heads:** 2

## Hull and Deck Information

---

**Hull Material:** Fiberglass

---

## Engine Information

---

**Engines:** 2

**Manufacturer:** Detroit Diesel

**Model:** 8V71-TI

**Engine Type:** Inboard

**Fuel Type:** Diesel

# PHOTOS



**Starboard Profile**



**Outriggers**



**Starboard Aft View**



**Starboard deck and bridge**



**Starboard salon window**



**Starboard Bow**



**Starboard Hull**



**Cockpit View**



**Transom View**



**Port Side**





**Bow facing aft**



**Port side from bow**



**Bridge Access from Cockpit**



**Cockpit overhang**



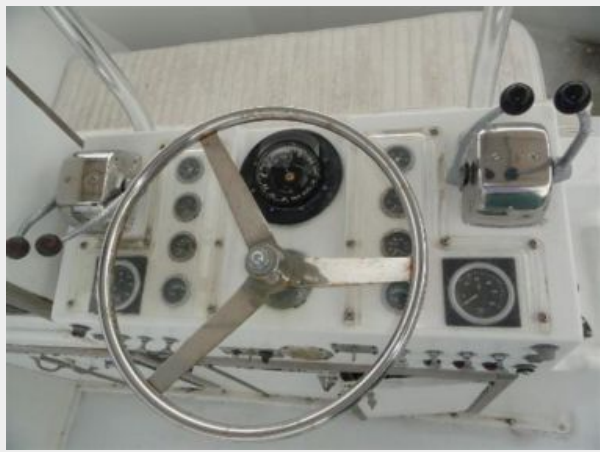
**Rod Holder**



**Captain/Companion Seating on Bridge**



**Helm Station 1**



**Helm Station 2**



**Furuno Radar**



**Bridge Forward Helm Seating**



**Furuno GPS**



**Auto Pilot & GPS**



**Helm and Seating**



**Bow from Bridge**



**Radar**



**Half Tower**



**Shore Power**



**Salon Entrance**



**Port Side Salon**



**Starboard Side Salon**



**Salon Station**



**Salon Generator Control**



## Power Service

### Salon VHF



### Salon Station 2



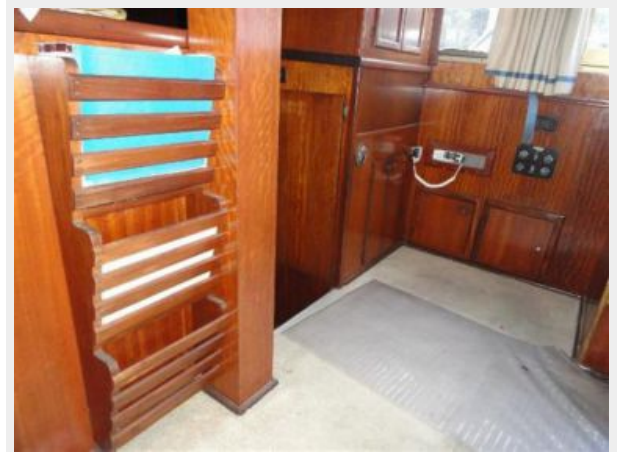
### Salon Station 3



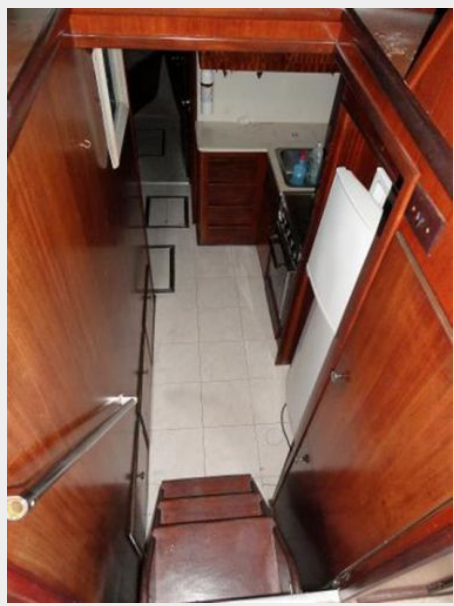
**New Salon A/C**



**Salon Storage**



**Salon Entrance to Galley**



**Galley 1**



**Galley 2**



**Master Stateroom**



**Master Stateroom Closet**



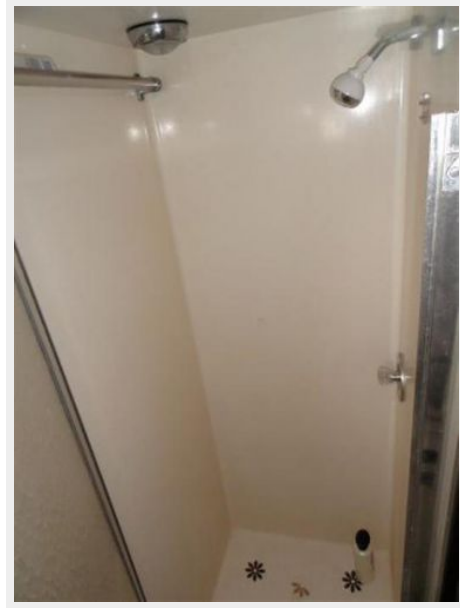
**Master Stateroom Head 1**



**Master Stateroom Head 2**



**Master Stateroom Shower**



**Forward Stateroom 2**

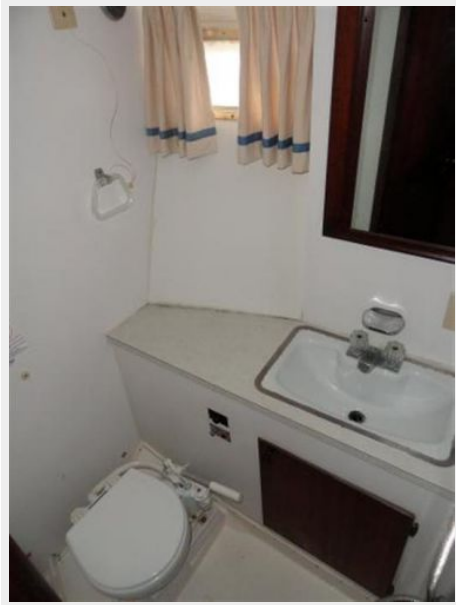


**Forward Stateroom 1**





**Guest Head**



**Salon facing Aft**



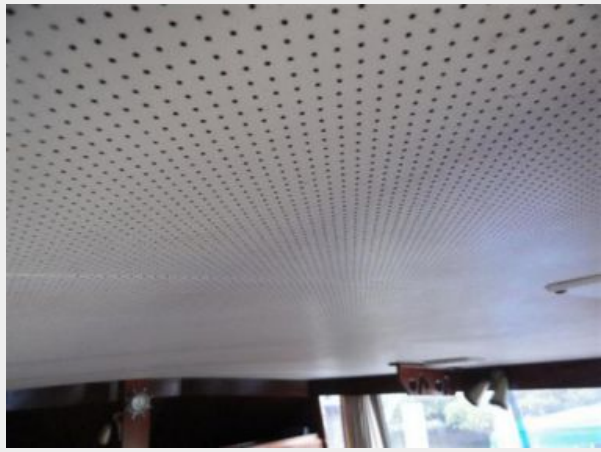
**Salon Rodholders**



**Phasor Generator**



**Headliner (good condition)**



# CONTACTS

---

Andrey Shestakov, leading yacht broker of the sales department of Shestakov Yacht Sales Inc. Shestakov Yacht Sales Inc., the official representative of the Miami/Fort Lauderdale FL headquarters.

## Contact details

---

Email: [andrey@shestakovyachtsales.com](mailto:andrey@shestakovyachtsales.com)

Web: [shestakovyachtsales.com/en/](http://shestakovyachtsales.com/en/)

## Telephones

---

USA: +1(954)274-4435

## Office hours

---

Monday – Saturday: **9:00 - 21:00** EDT

Sunday: **closed**

## Address

---



Harbour Towne Marina, 850 NE 3rd St,  
STE 213, Dania, FL 33004