

# 77FT 2015 REALSHIP 24 METER EXPEDITIO — REAL SHIPS



**Судостроитель:** [REAL SHIPS](#)

**Год постройки:** 2015

**Модель:** Траулер

**Цена:** ЦЕНА ЯХТЫ ПО ЗАПРОСУ

**Местонахождение:** Thailand

**Длина общая:** 77' 0" (23.47m)

**Ширина:** 22' 4" (6.81m)

**Мин. осадка:** 6' 0" (1.83m)

**Крейс. скорость:** 11 Kts. (13 MPH)

**Макс. скорость:** 13 Kts. (15 MPH)

Купить 77ft 2015 Realship 24 meter Expedition Yacht — REAL SHIPS а также выбрать подходящую вам яхту из нашего каталога яхт вам поможет опытный яхтенный брокер Андрей Шестаков. На сегодняшний день компания Shestakov Yacht Sales Inc. имеет большое количество яхт в собственном списке продаж, а также тесно сотрудничает со всеми крупными яхтенными производителями по всему миру.

Для того чтобы купить яхту 77ft 2015 Realship 24 meter Expedition Yacht — REAL SHIPS а также проконсультироваться по любому вопросу связанному с покупкой, продажей, чартером яхт позвоните по телефону **+7(918)465-66-44**.

# ОГЛАВЛЕНИЕ

ОГЛАВЛЕНИЕ	2
ХАРАКТЕРИСТИКИ	4
Основная информация	4
Размеры	4
Скорость, вместимость и масса	4
Размещение	4
Корпус и палуба	4
Информация о двигателе	5
ПОДРОБНОЕ ОПИСАНИЕ	6
General Features	6
Construction	6
Mechanical	7
Electrical	7
Integral Tankage	8
Galley and Salon	8
Pilothouse	8
Deck	9
Исключения	9
Отказ от ответственности	9
ФОТОГРАФИИ	11
Pilothouse (sister-ship)	11
Salon looking aft (sister-ship)	11
Salon looking forward (sister-ship)	11
Galley (sister-ship)	11
Master berth (sister-ship)	11
Split-level Master Suite (sister-ship)	11
Master lounge area (sister-ship)	12
VIP Guest Cabin (sister-ship)	12

---

Profile Rendering	12
Guest Cabin (sister-ship)	12
Lower Deck (customization available)	12
Main Deck (customization available)	12
Wheelhouse (sister-ship)	13
Wheelhouse (customization available)	13
Wheelhouse side deck (sister-ship)	13
Running Gear (sister-ship)	13
Wheelhouse side deck looking aft (sister-ship)	14
Wheelhouse Aft Deck (sister-ship)	14
Warping Winch aft (sister-ship)	14
Fin Keels (sister-ship)	14
Dual Anchor Windlasses (sister-ship)	15
Engine Room (sister-ship)	15
<b>КОНТАКТЫ</b>	<b>16</b>
Контактная информация	16
Телефоны	16
Время работы	16
Адрес	16

---

# ХАРАКТЕРИСТИКИ

## Основная информация

Тип судна: Траулер

Модельный год: 2015

Год постройки: 2015

Страна: Thailand

## Размеры

Длина общая: 77' 0" (23.47m)

Длина по ватерлинии: 71' 5" (21.77m)

Ширина: 22' 4" (6.81m)

Мин. осадка: 6' 0" (1.83m)

Трапы: 34' 0" (10.36m)

Длина привального бруса: 77' 7"  
(23.65m)

## Скорость, вместимость и масса

Крейс. скорость: 11 Kts. (13 MPH)

Макс. скорость: 13 Kts. (15 MPH)

Макс. скорость поворота: 3100 Kts.

Водоизмещение: 230000 Pounds

Вместимость воды: 500 Gallons

Вместимость сточного бака: 550 Gallons

Объем топливного бака: 5634 Gallons

## Размещение

Всего кают: 5

Всего коек: 9

Всего ком. состава: 5

## Корпус и палуба

Материал корпуса: Steel

---

## Информация о двигателе

---

**Двигатели:** 2

**Производитель:** John Deere

**Модель:** 6125AM75

**Тип двигателя:** Inboard

**Тип топлива:** Diesel

# ПОДРОБНОЕ ОПИСАНИЕ

---

## General Features

---

- Luxury yacht built to the highest standards of fit, finish, systems and safety.
- Four or Five Staterooms with private baths and Headhunter Marine toilets
- Pilothouse with helm, settee, pilot berth, desk and day head
- Large aft veranda behind pilothouse with sink or optional grill
- Salon with galley in forward port side
- Master with lofted stateroom amidships on port side
- Hardwood paneled walls and cabinetry
- Owner's choice of interior design and fixtures
- Head room is 2.1 meters through out
- Walk-in full height engine room aft
- Holds the largest Tender in her class
- Large foredeck storage area w/ two PCM doors

## Construction

---

- Computer cut pre-primed Steel & Aluminum
- Multiple chine hull form with 32mm chine round bars where plates meet
- Soft/curved hull side plating
- Shaped engine keels with boxed bar skegs protecting propellers and securing rudders , fixed fins forward to protect stabilizers, vessel can sit upright on keel, pods & steel fins
- Keel/Stem – internal & exterior 32mm plate
- Hull bottom 10mm plate
- Hull Side 10 mm plate (between chines)
- Hull topsides 6mm plate (above top chine)
- Deck 6mm plate
- House 6mm aluminum plate
- Engine Stringers 12.5mm plate
- C&C Cut Transverse Frames 6mm with T flange
- C&C Cut Bottom longitudinals 6mm shaped
- Primed interior before spray foamed insulation
- Integral external pipe keel cooling on hull
- Built to Lloyds, ABYC & CE standards
- Water jet cut Detaclad used to weld aluminum pilothouse to steel deck
- Alexseal primers, fairing & paints
- Soundown Vibration damping materials are used throughout vessel to isolate interior wood work from Steel or Aluminum surfaces

---

## Mechanical

---

- Twin John Deere 6125AFM's Tier Two Power tech 12.5 liter M-1 rating @ 341 hp each, max rpm 1800
- Twin Disc MGX5114SC 3:1 with quick/soft shift & ECU 300 controls
- John Deere Digital Gauges at helm station w/ analog Gauges and engine start in engine room
- Full bodied keel pod form allows for lower engine placement and short straight shafting
- Two 42" by 35" Michigan Nibral Wheels
- Two 38 KW Northern Lights generators w/sound shields
- Soundown engine isolation mounts
- Wesmar hydraulics for 100 hp dual prop bow thruster, Davit & anchor windlasses – hydraulics are driven by PTO's on both transmissions
- Hydraulics offer complete redundancy for power steering, stabilizers, windlasses, bow thruster and deck crane
- Wesmar 16' hydraulic stabilizers fins
- Lasdrop Dripless shaft logs
- Electrically actuated Fuel Valves w/ manual backup Fuel management and transfer system using Alpha Laval Centrifugal Fuel Polisher
- Automatic washdown of dry exhaust at start up (*dry exhaust exits at stainless plate above waterline on each side, water enters before exit*)
- Reverso GP-3013 lube oil transfer for mains & gens
- 60 gallon integral Hydraulic Lube oil reservoir
- 60 gallon integral lube oil reservoir for main engines
- Perko sea strainers for wet generator exhaust
- Northern Lights separators for quiet generator exhaust
- Ten, 24 Volt 2600 Gallon per hour bilge pumps
- Arid Bilge system keeps bilges dry
- Lexan topped sea chests
- Stainless Steel "Ultra Quiet" Mufflers with Jackets
- Delta T engine room ventilation system includes two 15" inch fans for intake and two 12" fans for exhaust, automatic dampers tied to Sea Fire Extinguisher system
- Hydraulic piping and lines are all seamless stainless steel
- Jastram Hydraulic Steering with dual pumps powered by engine PTO's
- Air compressor(s) for Scuba tanks, tools & horn

---

## Electrical

---

- 230 Volt 50 or 60 Hertz choice of AC power
- Main Distribution panels in Utility room with sub panels in Salon and Pilothouse
- Atlas 37 KVA Power Transformer
- Air Conditioning and Heat includes three 60,000 BTU main Chilling Compressors and 13 air handlers throughout vessel

- 200 amp alternator on each engine
- (2) 100 amp battery chargers
- (2) 45 amp battery chargers
- One 20 amp battery charger
- (2) 2500 watt Sine Wave inverter systems
- 100 amp Shore Power cable with electric Glendinning reel
- 100 amp back up power plug on Transom
- TV & Phone hookups
- 220 Volt 50Hz fresh water pump w/ 24 volt backup

---

## Integral Tankage

---

- (2) 1950 gallon integral fuel tanks below accommodations, port & starboard
- (2) 680 gallon integral Day tanks, port & starboard, aft of main tanks
- (2) 310 gallon integral Black/Grey water tanks below utility room w/ Headhunter aeration system
- (1) 1200 gallon integral Fresh Water tank forward
- Tank alley below accommodation for easy inspection
- All fuel, water and waste tanks are coated with job specific epoxy paints
- Murphy Fuel Transfer and pumping with electronic fuel valves and manual back-up
- AC Fuel Pump with DC backup Pump

---

## Galley and Salon

---

- Pacific Coast Marine welded frameless swinging door on Starboard side of Salon
- Large Sliding Pacific Coast Marine door, aft Salon
- Built in Settees and Bar
- Gaggenau Appliances
- TV & Entertainment area
- Built in furniture
- Hardwood planked floor

---

## Pilothouse

---

- All around visibility
- ½" front PCM frameless, welded windows
- Pantograph wipers w/ 20" blades on 5 windows with washdown
- John Deere Digital Engine Gauges
- Murphy Fuel transfer panel
- Wesmar Stabilizer Controls
- Three Pacific Coast Marine frameless, welded doors w/ dogs



- Built in settee, desk and pilot berth
- Hardwood floors
- Day head
- Built in electronics console
- Electronic helm & wing controls
- Twin Disc electronic controls at helm and wing stations
- Custom steering wheel
- Jastrum Jog steering at helm and both wing stations
- Bow Thruster controls at helm and wing
- Rudder command and angle indicators at helm and wing stations
- Portuguese Bridge full walk around

## Deck

---

- Storage room with two PCM welded doors onto fore deck
- Largest tender space in her class
- Dual Maxwell 4500 hydraulic anchor windlasses
- Dual Maxwell 3500 Warping Winches on aft deck
- Integral stainless dual anchor chutes in Bow
- 4000 lb. Steelhead Marine Davit on Foredeck
- 800 lb. Marquipt Davit on Transom
- Fresh water anchor wash down
- Fore and aft fresh water washdown
- Snorkel type fuel vents
- Boarding gates are aluminum for lightweight safety
- Aluminum radar mast for two open array radars
- Tide ride collapsible boarding ladder attaches port & starboard
- Integral 6" wide rub rail with stainless cap protects boat
- Sampson Post, cleats and hawse pipes are stainless
- Large bulwarks forward
- Stainless bow, stern and side rails
- Painted non-skid with edge borders on exterior decks
- Carlisle & Finch Classic Style Spotlight
- Kahlenberg 3 Trumpet Air Horn

## Исключения

---

При продаже яхты исключаются личные вещи владельца.

## Отказ от ответственности

---

Компания предоставляет описание судна или яхты добросовестно, но не может

гарантировать точность этой информации, а также не ручается за техническое состояние. Покупатель должен проинструктировать своих агентов или оценщиков исследовать представленную информацию более подробно, по собственному желанию. Продажа судна или яхты, изменение цены или снятие с продажи будет происходить без предварительного уведомления.

# ФОТОГРАФИИ

**Pilothouse (sister-ship)**



**Salon looking aft (sister-ship)**



**Salon looking forward (sister-ship)**



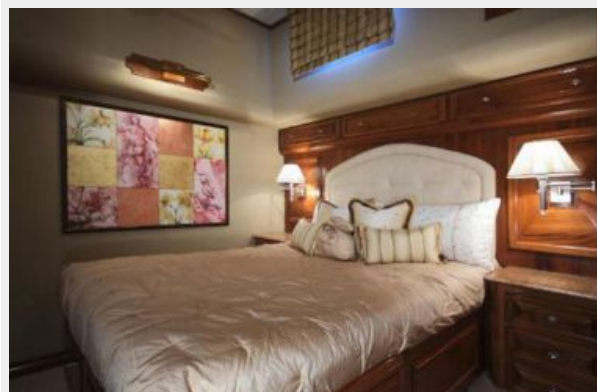
**Galley (sister-ship)**



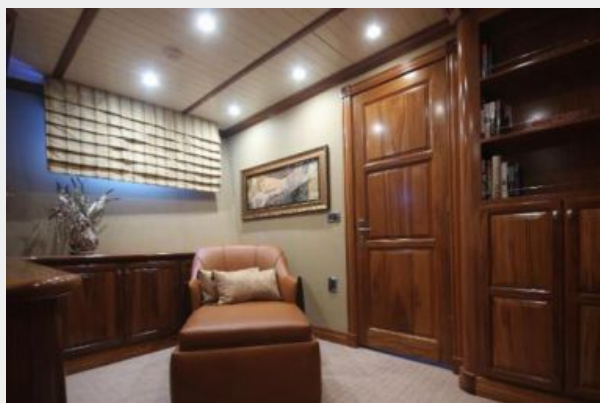
**Split-level Master Suite (sister-ship)**



**Master berth (sister-ship)**



**Master lounge area (sister-ship)**



**VIP Guest Cabin (sister-ship)**



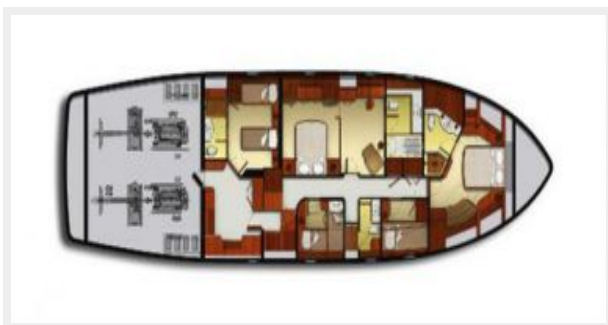
**Guest Cabin (sister-ship)**



**Profile Rendering**



**Lower Deck (customization available)**



**Main Deck (customization available)**



**Wheelhouse (customization available)**



**Wheelhouse (sister-ship)**



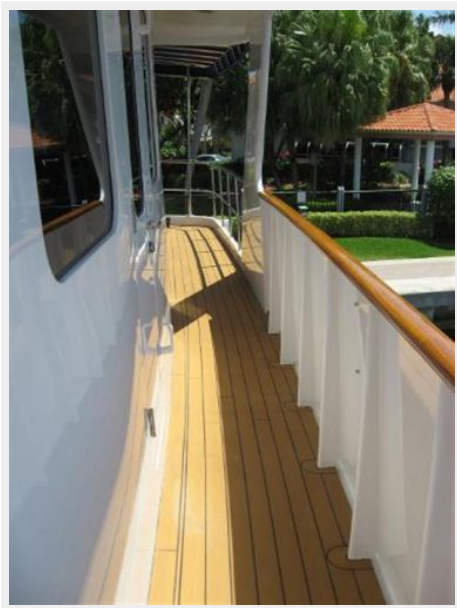
**Running Gear (sister-ship)**



**Wheelhouse side deck (sister-ship)**



**Wheelhouse side deck looking aft (sister-ship)**



**Wheelhouse Aft Deck (sister-ship)**



**Warping Winch aft (sister-ship)**



**Fin Keels (sister-ship)**



### Dual Anchor Windlasses (sister-ship)



### Engine Room (sister-ship)



# КОНТАКТЫ

---

Андрей Шестаков (Andrey Shestakov) – ведущий яхтенный брокер отдела продаж яхт и судов компании Shestakov Yacht Sales Inc. Официальный представитель Shestakov Yacht Sales Inc. для русскоговорящих клиентов в центральном офисе компании в Майами/Форт Лодердейл/Флорида/США.

## Контактная информация

---

Email: [andrey@shestakovyachtsales.com](mailto:andrey@shestakovyachtsales.com)

Web: [shestakovyachtsales.com](http://shestakovyachtsales.com)

## Телефоны

---

Краснодарский край: **+7(918)465-66-44**

США, Майами, Флорида: **+1(954)274-4435**

## Время работы

---

Понедельник – Суббота: **9:00 - 21:00**  
EDT

Воскресенье: **Закрето**

## Адрес

---



Harbour Towne Marina, 850 NE 3rd St,  
STE 213, Dania, FL 33004