

YALLA — HEESEN YACHTS



Судостроитель: HEESEN YACHTS

Год постройки: 2004

Модель: Моторная яхта

Цена: ЦЕНА ЯХТЫ ПО ЗАПРОСУ

Местонахождение: France

Длина общая: 154' 11" (47.22m)

Крейс. скорость: 14 Kts. (16 MPH)

Макс. скорость: 17 Kts. (20 MPH)

Купить **YALLA — HEESEN YACHTS** а также выбрать подходящую вам яхту из нашего каталога яхт вам поможет опытный яхтенный брокер Андрей Шестаков. На сегодняшний день компания **Shestakov Yacht Sales Inc.** имеет большое количество яхт в собственном списке продаж, а также тесно сотрудничает со всеми крупными яхтенными производителями по всему миру.

Для того чтобы купить яхту **YALLA — HEESEN YACHTS** а также проконсультироваться по любому вопросу связанному с покупкой, продажей, чартером яхт позвоните по телефону **+7(918)465-66-44**.

ОГЛАВЛЕНИЕ

ОГЛАВЛЕНИЕ	2
ХАРАКТЕРИСТИКИ	4
Обзор	4
Основная информация	4
Размеры	4
Скорость, вместимость и масса	4
Размещение	5
Корпус и палуба	5
Информация о двигателе	5
ПОДРОБНОЕ ОПИСАНИЕ	6
CONSTRUCTION	6
MAIN CHARACTERISTICS	6
MACHINERY	7
ACCOMMODATION	9
GALLEY & LAUNDRY EQUIPMENT	9
COMMUNICATIONS, NAVIGATION & ENTERTAINMENT EQUIPMENT	10
TENDERS & WATERSPORTS EQUIPMENT	11
DECK EQUIPMENT	11
SAFETY & SECURITY EQUIPMENT	12
COMMENTS	12
Исключения	13
Отказ от ответственности	13
ФОТОГРАФИИ	14
КОНТАКТЫ	17
Контактная информация	17
Телефоны	17
Время работы	17
Адрес	17

ХАРАКТЕРИСТИКИ

Обзор

"YALLA" was probably the most innovative steel construction Motor Yacht when delivered by Heesen Yachts.

Specially designed for her original Owner by Franck Laupman of Omega, "YALLA" is the first fast displacement Motor Yacht offering a top speed of 17 knots with excellent seaworthiness as well as nearly 5000 nautical miles range.

Constantly maintained and upgraded regardless of cost by her build Captain, she has only been used privately since new. "YALLA" is now offered in excellent condition with low engine hours and a full new paint job (2013) as well as a new Audiovisual system.

YALLA's accommodation for 12 guests is spacious and well-equipped, and includes a large Owner's suite on main deck; two double guest staterooms and two twin guest cabins (each with pullman beds) on lower deck.

Tender garage convertible into a large beach club with its own facility and sauna, opening to a large swimming platform.

Основная информация

Тип судна: Моторная яхта

Модельный год: 2004

Год постройки: 2004

Год обновления: 2013

Страна: France

Размеры

Длина общая: 154' 11" (47.22m)

Скорость, вместимость и масса

Крейс. скорость: 14 Kts. (16 MPH)

Макс. скорость: 17 Kts. (20 MPH)

Размещение

Всего кают: 5

Спальных мест экипажа: 10

Корпус и палуба

Материал корпуса: Steel

Информация о двигателе

Производитель: MTU

ПОДРОБНОЕ ОПИСАНИЕ

CONSTRUCTION

Steel hull and Aluminium superstructure

MAIN CHARACTERISTICS

General

BUILDER:	Heesen Yachts
YEAR:	2004
LOA:	47m/154' 2"
BEAM:	8.5m/27' 89"
DRAFT:	2.85m/9' 4"
CLASSIFICATION:	MCA, DNV
GROSS TONS:	498 Tons
NET TONS:	149 Tons
DISPLACEMENT:	370 tons-half loaded condition
DESIGNER:	Heesen Yachts & Omega Architects
NAVAL ARCHITECT:	Heesen Yachts
INTERIOR DESIGNER:	Art Line

Capacities

CRUISE SPEED: 14 Knots (approx)

MAXIMUM SPEED: 17 Knots (approx)

4000 nm (approx)

RANGE: Fuel Consumption:

350l/h@14 knots

FUEL CAPACITY: 60,000 Litres (15,850 US Gallons)

WATER CAPACITY: 17,000 Litres (4,490 US Gallons)

MACHINERY

ENGINES: 2 x MTU 1,577HP

ENGINE MODEL: 8V 4000 M70

ENGINE HOURS: Port: 3,576hrs (8-Jun-2015)
Starboard: 3,576hrs (8-Jun-2015)

FUEL: DIESEL

PROPULSION: PROP SHAFT

GEARBOXES: 2x ZF BW 460-4461

STEERING: Hydraulic

STABILIZERS: Quantum XT zero speed system (6,560 Hrs)

Generators

GENERATORS: 2x 80kw KiloPak

1x 33kw KiloPak

Port: 11,168 Hrs (8-Jun-15)

GENERATOR HOURS: Stbd: 11,031 Hrs (8-Jun-15)

Electricity

ELECTRICITY: 400v 3 phase 50 Hz

SHORE POWER: 72 Kva 125A adjustable isolation transformer

BATTERIES: -8 Optima"Red Top" 12v 50ah start batteries
-6 service batteries

Air Conditioning

2 x Heinen and Hoppman-Chilled water system

Other Machinery

-Chaffran five blades fixed pitch

-80 Kw-Hydraulic bowthruster HRP

-2 X HHP Pool Anchors

-Hamman-HL-CONT 01M3/Mini L Frame-Sewage System

-2 X HEM Reverse Osmosis Water maker

ACCOMMODATION

Full beam owner's suite on main deck with office, dressing room and large bathroom ensuite .

2x VIP cabins on lower deck forward and aft with private bathroom.

2x twin cabins on lower deck port and starboard with own facilities, each with pullman beds.

Crew:

For up to 10 crew

-1 captain's cabin with double bed, desk and shower room ensuite on bridge deck

-2 x double crew cabins

-1 x 4 crew cabin

GALLEY & LAUNDRY EQUIPMENT

Miele professional-Washing Machines

Miele professional-Coffee Machine

Miele professional-Dryers

Foster-Freezers

Insinkerator-Model 75-Waste Disposal Unit Foster-Main Refrigerators

Miele professional-Dishwasher

Lodge Industries-Food lift / Dumb Waiter

COMMUNICATIONS, NAVIGATION & ENTERTAINMENT EQUIPMENT

Communications Equipment

Icom-IC-M1E-VHF portable Radio

ORBIT-AL7200-VSAT

Panasonic-Telephone system (PABX)

Furuno-Felcom 15-Satcom C and Printer

Navico 50-GMDSS VHF Portable Radio

FLEET-FB250-Satcom

Furuno-NX500-Navtex

Raytheon-RAY 430-Loud-hailing/Intercom

Furuno-FA100-Automatic Indicator System Furuno-FM 8500-VHF Radio MCA GMDSS DSC

Navigation Equipment

Plath-Compass(Gyro)

Transas-Transas-Chart plotter

Furuno-GPS SC60-Satellite compass & Log

Furuno-GP80-DGPS

Plath-NaviPilot V-Autopilot	Furuno-FR 2115 B- Radar
Plath-Compass Fluxgate(electronic)	Brookes & Gatehouse-Hydra 2000-B & G speed log
Plath-Compasses(magnetic)	Brookes and Gatehouse-Hydra 2000-Sailing Instruments
Furuno-FCV 1200L-Depth sounder(colour)	Brookes & Gatehouse-Hydra 2000-B & G depth sounder

Entertainment Equipment

ORBIT TV-2 AL7204-TV with auto switching and dual tracking facilities	Omniaccess-Plexus-Networking
Sharp/Panasonic-TV Lifts & Screens	JBL & various-Speakers
Crestron based, local source-Entertainment general	

TENDERS & WATERSPORTS EQUIPMENT

NEQ 5000 Novurania Zodiac rescue tender

Sterling Reed Sportjet 65

DECK EQUIPMENT

Ascon Capstans-Type 3-Anchor Windlasses Ascon Capstans-Electric-Mooring Capstans

Ascon Capstans-Bow Anchors

SAFETY & SECURITY EQUIPMENT

Ultra Fog Fine System

4 x Zodiac 16 persons Life Rafts

Sterling AKHK Main Fire Pump

2 x Mc Murdo GMDSS SART

Minerva T2000 Fire Detection and Alarm System

COMMENTS

"YALLA" was probably the most innovative steel construction Motor Yacht when delivered by Heesen Yachts.

Specially designed for her original Owner by Franck Laupman of Omega, "YALLA" is the first fast displacement Motor Yacht offering a top speed of 17 knots with excellent seaworthiness as well as nearly 4000 nautical miles range.

Constantly maintained and upgraded regardless of cost by her build Captain, she has only been used privately since new. "YALLA" is now offered in excellent condition with low engine hours and a full new paint job (2013) as well as a new Audiovisual system.

YALLA's accommodation for 12 guests is spacious and well-equipped, and includes a large Owner's suite on main deck; two double guest staterooms and two twin guest cabins (each with pullman beds) on lower deck.

Tender garage convertible into a large beach club with its own facility and sauna, opening to a large swimming platform

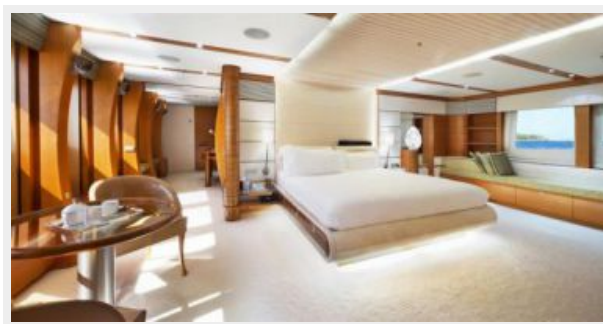
Исключения

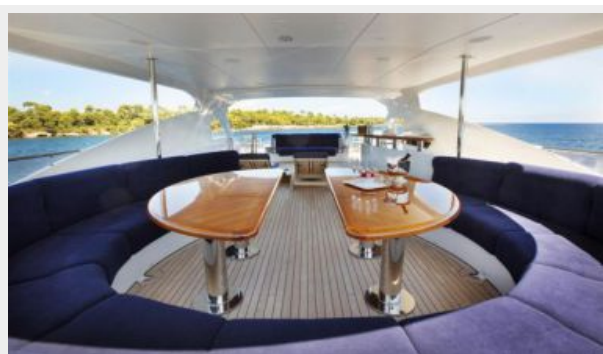
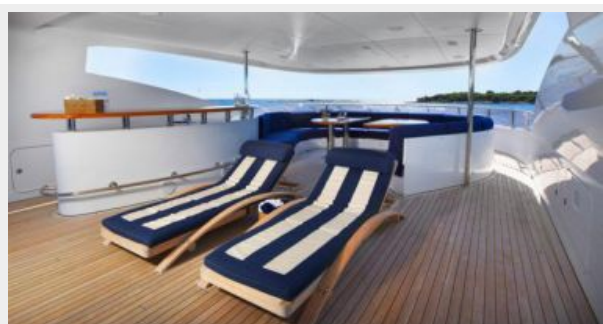
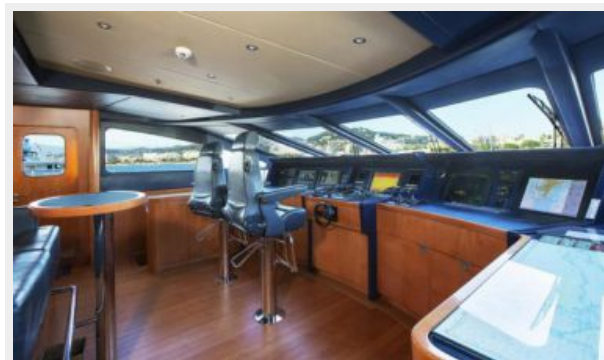
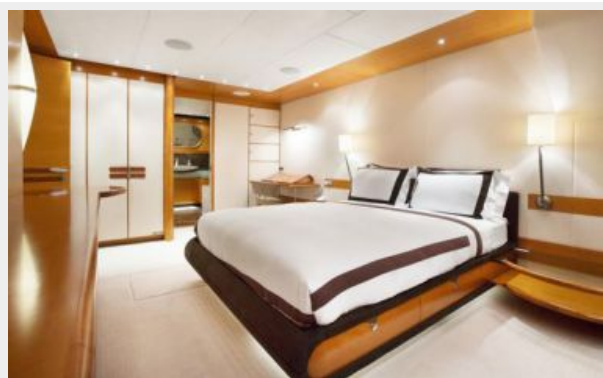
При продаже яхты исключаются личные вещи владельца.

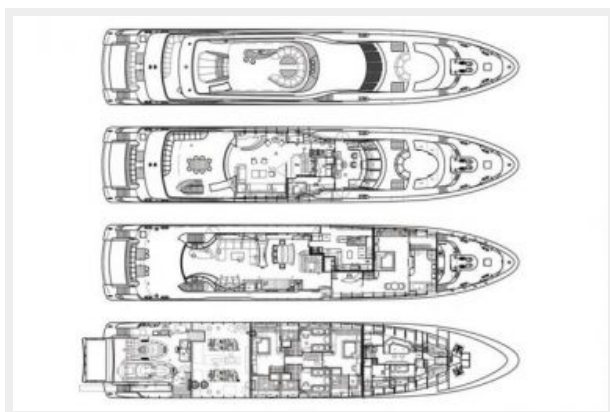
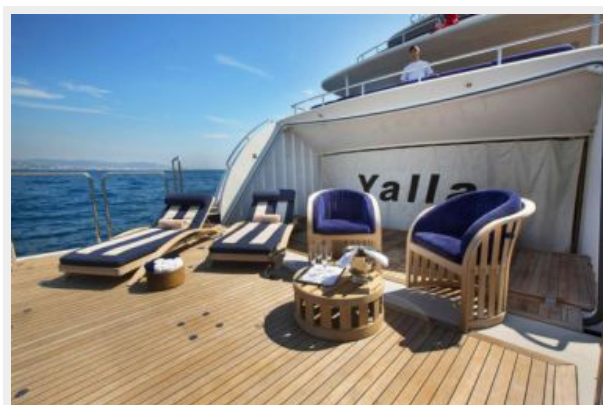
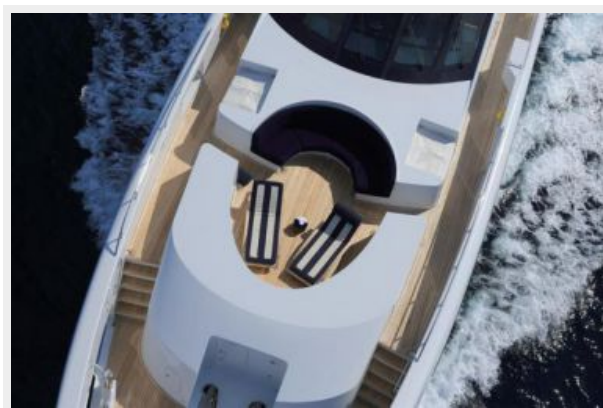
Отказ от ответственности

Компания предоставляет описание судна или яхты добросовестно, но не может гарантировать точность этой информации, а также не ручается за техническое состояние. Покупатель должен проинструктировать своих агентов или оценщиков исследовать представленную информацию более подробно, по собственному желанию. Продажа судна или яхты, изменение цены или снятие с продажи будет происходить без предварительного уведомления.

ФОТОГРАФИИ







КОНТАКТЫ

Андрей Шестаков (Andrey Shestakov) – ведущий яхтенный брокер отдела продаж яхт и судов компании Shestakov Yacht Sales Inc. Официальный представитель Shestakov Yacht Sales Inc. для русскоговорящих клиентов в центральном офисе компании в Майами/Форт Лодердейл/Флорида/США.

Контактная информация

Email: andrey@shestakovyachtsales.com

Web: shestakovyachtsales.com

Телефоны

Краснодарский край: **+7(918)465-66-44**

США, Майами, Флорида: **+1(954)274-4435**

Время работы

Понедельник – Суббота: **9:00 - 21:00**
EDT

Воскресенье: **Закрито**

Адрес



Harbour Towne Marina, 850 NE 3rd St,
STE 213, Dania, FL 33004