

## MYLO — BENETTI



**Builder:** BENETTI

**Year Built:** 2007

**Model:** Motor Yacht

**Price:** PRICE ON APPLICATION

**Location:** France

**LOA:** 120' 1" (36.60m)

**Beam:** 26' 0" (7.90m)

**Max Draft:** 6' 6" (1.96m)

**Cruise Speed:** 14 Kts. (16 MPH)

**Max Speed:** 16 Kts. (18 MPH)

Our experienced yacht broker, Andrey Shestakov, will help you choose and buy a yacht that best suits your needs **MYLO — BENETTI** from our catalogue. Presently, at Shestakov Yacht Sales Inc., we have a wide variety of yachts available on our sale's list. We also work in close contact with all the big yacht manufacturers from all over the world.

If you would like to buy a yacht **MYLO — BENETTI** or would like help answering any questions concerning purchasing, selling or chartering a yacht, please call **+1(954)274-4435**

# TABLE OF CONTENTS

TABLE OF CONTENTS	2
SPECIFICATIONS	4
Overview	4
Basic Information	4
Dimensions	4
Speed, Capacities and Weight	4
Accommodations	4
Hull and Deck Information	5
Engine Information	5
DETAILED INFORMATION	6
Accommodations	6
Capacities	6
Electrical	6
Communications and navigational equipment	6
Mechanical, propulsion and engine room equipment	7
Galley, domestic and laundry equipment	7
Entertainment equipment	7
Deck Equipment	7
Safety and security	7
Tenders and toys	7
Exclusions	8
Disclaimer	8
PHOTOS	9
CONTACTS	14
Contact details	14
Telephones	14
Office hours	14
Address	14



# SPECIFICATIONS

## Overview

The Benetti Classic 120' sees an evolution of the Classic series; employing the same successful design of François Zuretti and Stefano Righini, to create a luxury vessel with increased space and light. The wide forward superstructure fitted with panoramic windows provides a bright and open interior, and an extended garage for water toys and tender storage. MYLO boasts five staterooms, a modern and simple interior with pop art details that brings life to the black and white scheme color.

## Basic Information

**Category:** Motor Yacht

**Sub Category:** Tri-Deck

**Model Year:** 2007

**Year Built:** 2007

**Country:** France

**Fly Bridge:** Yes

## Dimensions

**LOA:** 120' 1" (36.60m)

**Beam:** 26' 0" (7.90m)

**Max Draft:** 6' 6" (1.96m)

## Speed, Capacities and Weight

**Cruise Speed:** 14 Kts. (16 MPH)

**Max Speed:** 16 Kts. (18 MPH)

**Displacement:** 374785.8454 Pounds

**Gross Tonnage:** 298 Pounds

## Accommodations

**Total Cabins:** 5

**Total Berths:** 10

---

## Hull and Deck Information

---

**Hull Material:** GRP

## Engine Information

---

**Engines:** 2

**Manufacturer:** Caterpillar

**Model:** C30

---

# DETAILED INFORMATION

---

## Accommodations

---

The Benetti Classic 120' sees an evolution of the Classic series; employing the same successful design of François Zuretti and Stefano Righini, to create a luxury vessel with increased space and light. The wide forward superstructure fitted with panoramic windows provides a bright and open interior, and an extended garage for water toys and tender storage. MYLO boasts five staterooms, a modern and simple interior with pop art details that brings life to the black and white scheme color. The aft deck has an al fresco lounging area that accommodates 6 with a sofa and two large Ottomans. Access the upper deck via the starboard stairs or enter the large open plan salon and dining area aft of the galley. The modern salon has a sofa and two armchairs all by French designer Modénature. The dining table can sit 8 guests comfortably. Both areas are flooded with light and are separated by the strategically placed bar counter and staircase in the centre leading to the four guests staterooms located on the lower deck. There's a VIP, a double and two twin guestrooms with third Pullman berths. All staterooms have ensuite bathrooms. The owner's suite, however, lies forward on the main deck and features panoramic windows that embrace the beautiful surrounds. There is another salon on the upper deck which also includes a wheelhouse, a day head and shower. This salon is split between multiple areas: the bar area with 4 high stools, the casual high table and a lounge area with a large comfortable sofa with table and armchairs. There is a large outdoor communal area on the upper deck with a dining table for 10 and two lounging areas with sofas, armchairs and Ottomans that can welcome up to another 10 to 15 guests. The sun deck features a Jacuzzi around which is a well-kitted out sunbathing area with 4 sun loungers armchairs and a lounging sofa offering the perfect setting to enjoy the views while relaxing in the Jacuzzi or lying under the sun. In terms of technical features, MYLO, like the other Benetti Classic 120' vessels, has a displacement hull and is powered by twin Cat C30 DITA engines which yield a 16-knot speed at half load and a cruising one of 15. There are two 77 kW Kohler generators in the engine room too. These factors combined make this VAT paid yacht the perfect vessel for quiet and tranquil navigation.

## Capacities

---

Fuel: 38 000 litres Water: 7 500 litres New Lube Oil: 546 litres Dirty Lube Oil: 546 litres Black Water: 2794 Grey Water: 1786

## Electrical

---

Generators: 2 x KOHLER 77kw Generator Hours: Port 5414 Stbd 5425 (as of Sept 2014)

## Communications and navigational equipment

---

Satcom: Thrane and Thrane 0675-07 VHF Radio fixed: Sailor RT5022 VHF handheld: 2 x sailor SP3300 UHF Radio handheld: 7 x Hytera Digital Radios Telephone Exchange: Panasonic KX-T7630 AIS: Furuno FA-150 Chart Plotter: Maxsea Automatic Pilot: Simrad AP50 Gyro Compass: Simrad GC 85 Radars: 2 x Furuno GPS: 2 x Furuno GP-150 Navtex: Furuno NX-700-A Echo Sounder: Furuno FCV-585 Speed Log: Furuno Wind Instruments: Furuno NX 700

---

## Mechanical, propulsion and engine room equipment

---

Main Engines: 2 x CATS C30 Hours: Port 2933hrs Stbd 2926 hrs (August 2015) Gear Boxes: 2 x ZF2560 Max Speed: 16 knots Cruising: 14 knots Range: 2850nm @ 12 kts (160Lph) 2100nm @ 14 kts (250Lph) **Ancillary equipment** Bow Thruster: Naiad Stabilisers: Naiad, Zero Speed Fuel Separator: Alfa Laval Fuel Filters: Racor Sewage: Hamman WCs: Jets Watermakers: Idromar Model MC5 Duplex Air Conditioning: Condaria 220,000 BTU's

---

## Galley, domestic and laundry equipment

---

2 x clothes washer: Miele 2 x tumble drier: Miele 1 x dishwasher: Miele 1 x dishwasher: Bosch 1 x oven: Miele 1 x microwave oven: Miele 1 x stove Atag 5 x refrigerators: Frigit 2 x refrigerator: Indel B 2 x Ice maker: Scotsman 1 x Ice maker: Isotherm 1 x wine cooler

---

## Entertainment equipment

---

Televisions: 3 x 107cm Sharp AQUOS 4 x 48 cm Samsung 3 x Apple TV 1 x Playstation 3 11 x LG DVD players Satellite Televisions: SAT – OPTEX electronique format iPod dock and iPad launchport controller in the main guests areas incorporate an “on demand” entertainment system **Office equipment** HP ENVY Printer/Scanner/Fax: Multi-function printer, fax and scanner in one unit Network: Wifi Laptop ASUS

---

## Deck Equipment

---

Anchor Windlass: 2 x Muir Aft Warping Capstans: 2 x Muir Passarelle: Pincraft

---

## Safety and security

---

2 x 10 man Zodiac liferafts 2 x 12 man Zodiac liferafts EPIRB SART

---

## Tenders and toys

---

1 x Castoldi 17ft Jet Tender (D3 Engine 514hrs) 1 x Small rescue tender, 10HP Outboard Various Ski and Watersports equipment 1 x Yamaha SuperJet (stand up) 1 x Sea Doo Wake Pro

---

2012 42hrs

## Exclusions

---

Owner's personal belongings.

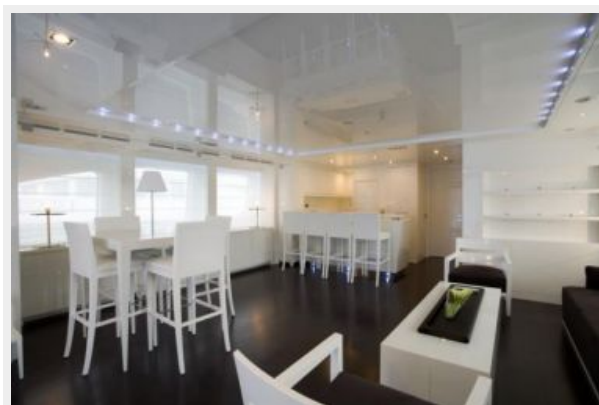
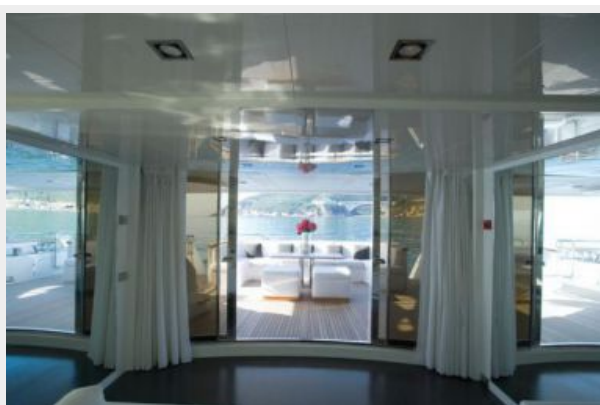
## Disclaimer

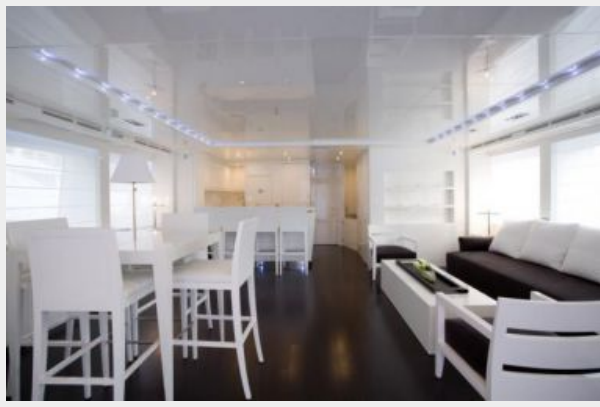
---

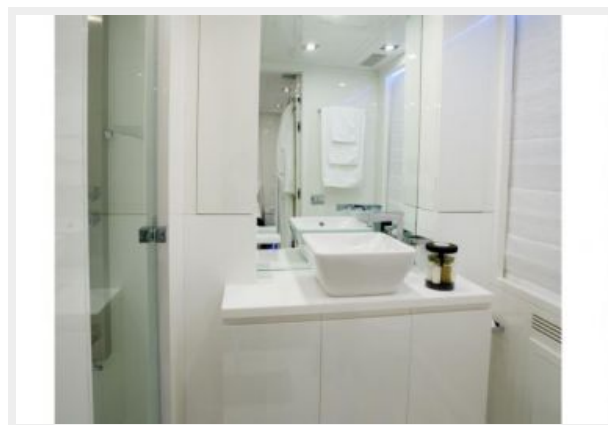
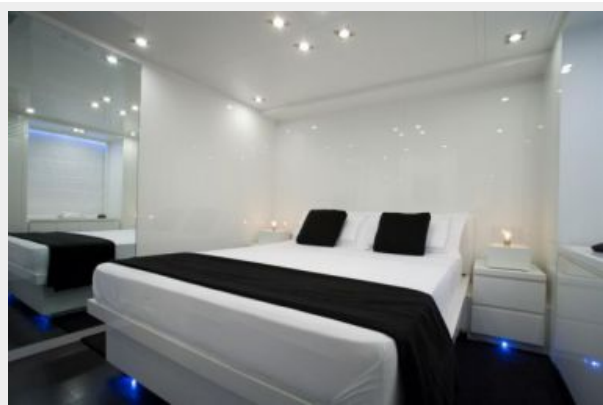
The Company offers the details of this vessel or yacht in good faith but cannot guarantee or warrant the accuracy of this information nor warrant the condition of the vessel. A buyer should instruct his representatives, agents, or his surveyors, to investigate such details as the buyer desires validated. This vessel or yacht is offered subject to prior sale, price change, or withdrawal without notice.



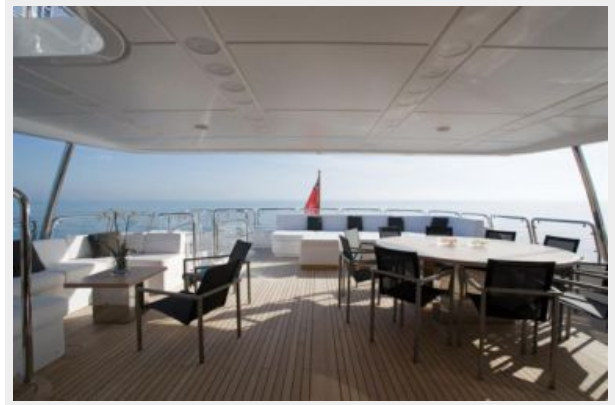
# PHOTOS

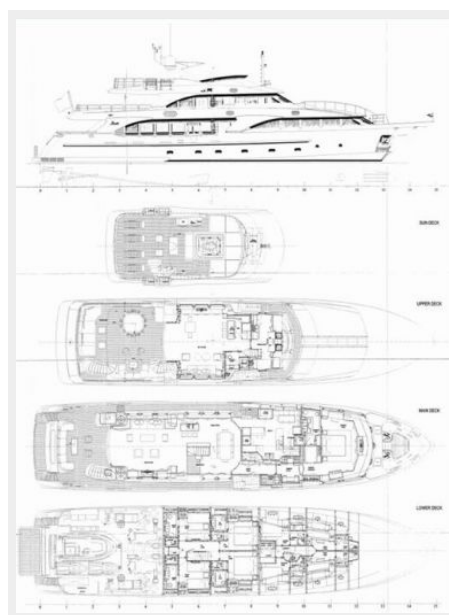












# CONTACTS

---

Andrey Shestakov, leading yacht broker of the sales department of Shestakov Yacht Sales Inc. Shestakov Yacht Sales Inc., the official representative of the Miami/Fort Lauderdale FL headquarters.

## Contact details

---

Email: **andrey@shestakovyachtsales.com**

Web: [shestakovyachtsales.com/en/](http://shestakovyachtsales.com/en/)

## Telephones

---

USA: **+1(954)274-4435**

## Office hours

---

Monday – Saturday: **9:00 - 21:00 EDT**

Sunday: **closed**

## Address

---



Harbour Towne Marina, 850 NE 3rd St,  
STE 213, Dania, FL 33004