

SEAFIRE — STEPHENS MARINE



Судостроитель: STEPHENS MARINE

Год постройки: 1981

Модель: Моторная яхта

Цена: **ЦЕНА ЯХТЫ ПО ЗАПРОСУ**

Местонахождение: United States

Длина общая: 68' 0" (20.73m)

Ширина: 17' 6" (5.33m)

Мин. осадка: 4' 8" (1.42m)

Макс. осадка: 5' 0" (1.52m)

Крейс. скорость: 10 Kts. (12 MPH)

Макс. скорость: 14 Kts. (16 MPH)

Купить **SEAFIRE — STEPHENS MARINE** а также выбрать подходящую вам яхту из нашего каталога яхт вам поможет опытный яхтенный брокер Андрей Шестаков. На сегодняшний день компания **Shestakov Yacht Sales Inc.** имеет большое количество яхт в собственном списке продаж, а также тесно сотрудничает со всеми крупными яхтенными производителями по всему миру.

Для того чтобы купить яхту **SEAFIRE — STEPHENS MARINE** а также проконсультироваться по любому вопросу связанному с покупкой, продажей, чартером яхт позвоните по телефону **+7(918)465-66-44**.

ОГЛАВЛЕНИЕ

ОГЛАВЛЕНИЕ	2
ХАРАКТЕРИСТИКИ	6
Обзор	6
Основная информация	6
Размеры	6
Скорость, вместимость и масса	7
Размещение	7
Корпус и палуба	7
Информация о двигателе	8
ПОДРОБНОЕ ОПИСАНИЕ	9
Accommodations	9
Foredeck	9
Portugese Bridge/Side Decks/Aft Deck	9
Swim Platform	10
Flybridge	10
Flybridge - Electronics	11
Pilothouse	11
Lower Helm Electronics	11
Galley	12
Main Salon	12
Main Salon - Entertainment	13
Master Stateroom	13
Master Head	13
Aft Passageway	14
Aft Guest Stateroom	14
Aft Stateroom Guest Head	14
Aft Laundry Room	15
Forward Guest Stateroom	15

Forward Guest Stateroom Ensuite Head	16
Captain's Cabin	16
Captain Cabin Ensuite Head	17
Engine Room	17
Electrical	18
Work Bench	18
Head System	18
Bow Thruster	19
Exclusions	19
Broker's Remarks	19
Исключения	19
Отказ от ответственности	19
ФОТОГРАФИИ	21
Bow	21
Cabin	21
Side Deck	21
Portugese Bridge Foredeck	21
Flybridge Helm	21
Flybridge Helm / Access Hatch	21
Flybridge Seating	22
Flybridge Helm Seat	22
Flybridge Seating	22
Boat Deck	22
Flybridge Mast	22
Aft Deck	22
Aft Deck	22
Pilothouse	22
Pilothouse	23
Pilothouse Aft Bench Seat	23

Pilothouse Ladder	23
Pilothouse Helm seat	23
Galley	23
Galley	23
Galley	24
Galley Dinette	24
Main Salon	24
Main Salon	24
Stairwell to Aft Cabins	24
Main Salon	24
Master Stateroom	25
Master Stateroom	25
Master Stateroom	25
Master Stateroom	25
Master Head	25
Master Head	25
Aft Passageway	26
Twin Berth Stateroom Aft	26
Twin Berth Stateroom Ensuite Head	26
Twin Berth Stateroom Aft	26
Laundry Room	27
Forward Guest Stateroom	27
Forward Guests Stateroom	27
Forward Guest Stateroom	27
Forward Guest Head	28
Captain's Cabin	28
Forward Captain's Head	28
Captain's Cabin	28
Captain's Galley	29

Captain's Galley	29
Engine Room	29
Engine Room	29
Water Maker	30
КОНТАКТЫ	31
Контактная информация	31
Телефоны	31
Время работы	31
Адрес	31

ХАРАКТЕРИСТИКИ

Обзор

Sleeps six owner and guests in three staterooms. Crew quarter with private head. Entering from the aft deck there is an ample salon with a large sofa and large picture windows. A staircase to starboard leads to the aft passageway. The master stateroom is aft with a queen bed and built in chest of drawers on either side. A private head and shower is to port and large closet is to starboard. The aft passage also leads to a second stateroom with two beds and a private head and shower to starboard, and a full size laundry room to port. Large closets line the passageway providing immense storage space for all traveling owner and guest needs. Moving forward from the main salon into the galley, there is an immense working area mirrored by a built in dinette. Forward of the galley is the pilothouse with a centered bench seat at the helm and a second bench aft. This large helm eases navigation and makes for extremely comfortable traveling. Forward of the pilothouse and down the passageway lead to crew quarter and full beam walk-in engine room entrance. Forward is a large third stateroom with two beds and a private head and shower in the bow.

Основная информация

Тип судна: Моторная яхта

Подкатегория: Pilothouse

Модельный год: 1981

Год постройки: 1981

Страна: United States

Верх: 2353

Открытая палуба мостика: Да

Размеры

Длина общая: 68' 0" (20.73m)

Ширина: 17' 6" (5.33m)

Мин. осадка: 4' 8" (1.42m)

Макс. осадка: 5' 0" (1.52m)

Скорость, вместимость и масса

Крейс. скорость: 10 Kts. (12 MPH)	Крейсерская скорость поворота: 1500 Kts.
Дальность на крейсерской скорости: 1200	Макс. скорость: 14 Kts. (16 MPH)
	Макс. скорость поворота: 2300 Kts.
Дальность на макс. скорости: 1200 Kts.	Чистый вес: 42 Pounds
Вместимость воды: 500 Gallons	Вместимость сточного бака: 150 Gallons
Объем топливного бака: 2500 Gallons	

Размещение

Всего кают: 3	Всего коек: 5
Спальные места: 7	Всего ком. состава: 4
Каюта капитана: Да	Каюты экипажа: 1
Койки экипажа: 1	

Корпус и палуба

Материал корпуса: Aluminum	Материал палубы: Teak
Комплектация корпуса: Semi-Displacement	Цвет корпуса: White
	Дизайнер корпуса: Stephens Marine
Дизайнер экстерьера: Stephens Marine	Дизайнер интерьера: Stephens Marine

Информация о двигателе

Двигатели: 2

Производитель: Detroit Diesel

Модель: 12V71N Series

Тип двигателя: Inboard

Тип топлива: Diesel

ПОДРОБНОЕ ОПИСАНИЕ

Accommodations

Sleeps six owner and guests in three staterooms. Crew quarter with private head. Entering from the aft deck there is an ample salon with a large sofa and large picture windows. A staircase to starboard leads to the aft passageway. The master stateroom is aft with a queen bed and built in chest of drawers on either side. A private head and shower is to port and large closet is to starboard. The aft passage also leads to a second stateroom with two beds and a private head and shower to starboard, and a full size laundry room to port. Large closets line the passageway providing immense storage space for all traveling owner and guest needs. Moving forward from the main salon into the galley, there is an immense working area mirrored by a built in dinette. Forward of the galley is the pilothouse with a centered bench seat at the helm and a second bench aft. This large helm eases navigation and makes for extremely comfortable traveling. Forward of the pilothouse and down the passageway lead to crew quarter and full beam walk-in engine room entrance. Forward is a large third stateroom with two beds and a private head and shower in the bow.

Foredeck

- Teak deck
- High gloss varnished teak cap rail
- 24" high stainless bow rail
- Stainless steel flag staff holder with 47" teak flag staff
- Port and Starboard rope hause with 16" cleats
- Teak escape/Ventilation hatch with 10" circular skylight 25" x 25" with cover
- Windlass Ideal 24v with chain Wildcat and stemhead roller
- 200' x 3/8" galvanized chain with chain stop
- Anchor 145lbs. Navy type
- Spare anchor deck hause with lid
- Anchor up foot peddle

Portugese Bridge/Side Decks/Aft Deck

- 23' Walkthrough to Foredeck
- Port and starboard storage lockers
- Teak cap high gloss varnished
- Exterior forward of pilothouse seat with cushions and storage below
- Walkaround decks 23" with cabin overhang
- 34" high bulwarks
- Port and starboard 1/4-1/2-3/4+ stern rope houses with 16" cleats

- Port and starboard gates at pilothouse 21" wide (note) swing inboard
- Custom removable (2) step vertical stainless boarding ladder
- Aft deck 8'9" in length with 5' hardtop overhang with courtesy light
- Built-in stern bench seat 7'8" wide x 22" deep with cushions and storage below
- Teak decking
- Aft cabin bulkhead storage locker with hinged lid 34"H x 54"W x 14"D
- Access gate to swim platform with removable stainless steel ladder with teak treads
- (2) Wicker style armchairs with cushions
- (2) 20" Wicker style stools
- Salon Access through double teak doors with windows and storage sun cover
- Port and starboard 12" stainless steel cleats with chafe guards
- Stainless steel stern flagstaff holder with 72" teak flagstaff
- Life ring 24"
- Port and starboard teak boat hooks 9' each with cabin side holders
- Port and starboard overhang at pilothouse doors with courtesy boarding lights
- Flush deck drains to waterline from main deck to (5) port and starboard sides

Swim Platform

- Aluminum 36" deep with teak decking
- Removable stainless steel swim ladder with (2) teak steps

Flybridge

- Bimini top with 1-1/4" stainless steel frame (New 9/2010)
- Windscreen Venturi style clear plexiglass with removable panels
- Compass Magnetic 4-1/2" (Danforth Constellation)
- Chrome Binnacle on compass with cover
- Wheel 30" stainless steel Destroyer style
- Bow thruster control (Wesmar 48 volt)
- Clutch and throttles single lever Morse
- Rudder angle indicator (Sperry)
- Centerline helm station with cover
- Helm bench seat 51" wide with cushions and backrest
- Storage below helm seat
- Port and starboard companion seats with cushions and backrest
- Storage below port and starboard companion seats
- Teak decking
- Mast hinged with spreader lights
- Davit 800lbs. Marquipt/port side with starboard side standpipe

Flybridge - Electronics

- Chart plotter 12" Garmin 4212 with cover (New 9/2010)
- V.H.F. Icom IC-M56 with 9' DB Gain antenna
- Depth finder digital (Datamarine)
- Synchronizer Glendenning automatic
- (2) Stereo speakers with volume control
- 12" accessory plug

Pilothouse

- **Headroom 6'5"**
- Windshield (5) window with 5 - 20" wipers with fresh water wash down
- White solid pilothouse windshield cover
- Port and starboard pilothouse doors
- Port and starboard pilothouse bifold teak screen doors
- Pilothouse cabin sole Mahogany with satin finish
- Pilothouse bench helm seat 52" W x 23" D x 31" H with back rest and cushions
- Storage below bench helm seat with access doors on each end
- Stainless steel foot rest
- Clutch and throttles single lever controls (Morse) with idle control
- Bow thruster control (Wesmar 48v)
- Compass 8" magnet with chrome Binnacle (Danforth)
- Chart flat with overhead red night vision chart light
- Stabilizer control with low fluid level warning light (Naiad)
- Helm wheel 30" mahogany
- Chart / manual cabinet with (6) shelves
- Flybridge access ladder (5) step with non skid tread's teak
- Hatch with gas shock 23" x 25"
- Air condition reverse cycle (Cruisair)
- Bench seat with cushions and storage below 57" W x 27" D
- Overhead lights (2) 12v
- Storage lockers (2)
- Cabinet built in with (2) file cabinet drawers
- Manual fire system emergency pull
- (2) 110v outlets
- Stairwell to forward cabins and to engine room with stainless steel grab rail
- Electronics consul overhead with access panels

Lower Helm Electronics

- Rudder angle indicator 3-1/2" (Sperry)
- Auto pilot (Sperry) with 7-1/2" magnetic compass (Commercial Grade Unit)
- Radar with 4' open array antenna 96 mile with 15" screen (Simrad Anritsu)
- Chart plotter with 12" screen Garmin 4212 with cover (New 9/2010)
- Synchronizer / Glendenning automatic
- Clock and barometer (Weems and Plath)
- Depth finder digital with alarm impulse 360i
- V.H.F. with 9' DB gain antenna Raytheon Ray55
- Wind speed indicator with cover (Raymarine ST40) (New 9/2010)
- Searchlight 12" with hand control (Carlisle and Finch)
- Horns dual trumpet (Kahlenberg) with 24v air compressor
- Air draft 24' top of anchor light / 18' with mast layed down
- V.H.F. hand held with charger (Westmarine VHF 150)
- Clinometer (Rieker Inst. Co)

Galley

- **Headroom 6'9"**
- Location: Main deck just aft of pilothouse to port
- Viewing port lights (2) port, (2) starboard 16" at eye level with privacy shades
- Ample over and under counter storage lockers
- Under cabinet night cruising light red 12v
- Thermador (4) burner Stove with full size oven 110v
- Stainless steel double sinks with Single Lever faucet and garbage disposal
- Hamilton Beach built in toaster oven
- Overhead 110v light
- Kitchen Aid stainless steel refrigerator / freezer with ice dispenser 22 cubic feet (New 9/2010)
- Mahogany flooring with high gloss finish
- Liquor glass locker with cutouts
- Stainless steel paper towel holder
- Air conditioner services galley and main salon
- Dinette seats (4) person comfortably and is raised for easy viewing (to starboard of galley)
- Storage under dinette seats
- Galley countertop is Formica with stainless back splash
- Matching Mahogany cabinetry

Main Salon

- **Head room 6'6"**
- Large viewing windows with Mahogany valances and Roman style shades
- Double doors to aft deck with full height windows

- Stairwell to master/guest staterooms
- Natuzzi leather sofa with throw pillow located port (New 9/2010)
- (2) Swivel barrel chairs matching Natuzzi Leather (New 9/2010)
- Built in end tables with matching lamps and built in speakers
- Carpeted sole (New 9/2010)
- Ottoman upholstered with storage
- Headliner with overhead down lighting
- Paneling traditional Mahogany satin finish
- Décor subtle beiges and off whites

Main Salon - Entertainment

- Panasonic 42" flat screen TV with remote control (New 9/2010)
- Direct TV DSS receiver
- Sat TV KVH M5 (New 9/2010)
- Panasonic DVD-558 DVD/CD player (New 9/2010)
- A/V cabinet with cooling fan and DVD storage
- TV cabinet with storage below

Master Stateroom

- **Headroom 6'3"**
- Full beam aft
- Light wall coverings accented by Mahogany cabinetry
- Large port and starboard opening port lights with privacy shades
- Matching Mahogany valances
- Centerline queen berth with storage below
- Mahogany aft center bulkhead with reading lights and mirror
- Port and starboard nightstands / dressers with lots of drawer and lockers
- To port vanity with mirror and make up lighting
- Large hanging locker to starboard with ventilated door
- Air conditioning / reverse cycle CruisAir
- Carpeted flooring
- Panasonic 32" flat screen TV with DSS receiver (New 2010)
- Privacy door with lock
- Port and starboard 110v outlets
- Ensuite master head

Master Head

- **Headroom 6'3"**

- Stahl shower
- Vaccu Flush fresh water head
- Mosaic tile flooring with matching countertop
- Privacy door
- Large opening port light with privacy shade
- Mirror with lights
- Porcelain sink with single lever faucet
- towel rack

Aft Passageway

- (1) Large linen locker
- (1) Large pantry locker
- (1) Hanging locker
- Access to starboard guest aft stateroom
- Headliner with lights
- Carpet flooring
- Wall coverings
- Traditional Mahogany doors and jointer work

Aft Guest Stateroom

- **Headroom 6'3"**
- Large opening port light with privacy shade
- Oversized twin berths with reading lamps
- Storage drawers below berths
- Night stand with drawers
- Forward bulkhead mirror
- Air conditioner
- Hanging locker
- Carpeted flooring
- Traditional wall coverings accented by Mahogany joinery work
- Privacy door with lock
- Dynex 26" flat screen TV with remote control
- DSS receiver shared with Master stateroom
- Overhead 24v light
- Ensuite head with privacy door

Aft Stateroom Guest Head

- Large opening port light with privacy shade

- Mosaic tile flooring and vanity countertop
- Under counter storage
- Sink with single lever faucet
- Vaccu Flush fresh water head
- Wall mirror
- Stall shower
- Towel rack
- Toilet paper holder
- Wall lighting
- Hand towel holder
- Privacy door

Aft Laundry Room

- Whirlpool washer and dryer - apartment size machines
- Clothes folding countertop
- Overhead lighting
- Privacy door
- Carpeted flooring

Locker: (1) 20 gallon Raritan hot water heater 220v (1) Fresh water pump Raz Marine 24v with pressure gauge (1) Domestic fresh water pump Raz Marine 24v with pressure gauge **spare** (1) Canister element style fresh water filter.

Forward Guest Stateroom

- **Head room 6'7"**
- (4) opening port lights
- Port and starboard berths with built in night stands
- Drawers and storage below berths
- Port and starboard Mahogany valances with Roman style privacy shades
- Port hanging locker
- Privacy door with lock
- Cruisair Air conditioner reverse cycle
- Port and starboard 110v Sconce wall lighting / reading lamps
- 110v outlet
- Built in 110v electric heater
- Dynex 26" flat screen TV with remote control (New 9/2010)
- Carpeted cabin sole
- Overhead light 24v
- Tasteful traditional blend of wall coverings and Mahogany joinery work
- Ensuite head forward

- Wall mirror with Mahogany frame 18' W x 24" H
- DSS receiver
- DVD player (New 9/2010)

Forward Guest Stateroom Ensuite Head

- Forward bulkhead opening mirror access to chain/rope locker
- Vanity with mosaic tile and porcelain sink with single lever faucet
- Storage below vanity
- Port and starboard opening round port lights opaque
- Overhead ventilation / escape hatch with screen and port light 21" x 21"
- Head fresh water Vaccu Flush
- Stall shower with frosted Lexan door with 6'2" headroom
- Port and starboard storage lockers
- Mosaic tile flooring
- (2) 110v wall lights
- 110v outlet
- Towel rack
- Polished stainless steel toilet paper holder
- Privacy door with lock
- Toothbrush holder
- Soap dish holder
- Electric shower sump pump with on/off light

Captain's Cabin

- **Headroom 6'2"**
- Just aft of forward guest stateroom
- Sofa / single lower berth to port with drawers below
- (2) round opening port lights
- Mahogany valance with Roman style privacy curtain
- Bookshelf to port
- 110v light fixture forward bulkhead
- Air conditioner duct
- (2) 24v overhead lights
- **Crew Galley**
- (2) Storage locker with cabinet doors
- Countertop
- Under counter Sub Zero freezer 110v
- Under counter refrigerator with freezer 110v Avanti
- G.E. Microwave 18" W x 10" H
- Circular stairwell from pilothouse with polished stainless steel banister

- Carpeted sole
- Tasteful blend of wall covers with traditional Mahogany joinery

Captain Cabin Ensuite Head

- Located to starboard of Captain's cabin
- (1) Round opening port light
- Vanity with mosaic tile and storage below
- Porcelain sink with single lever faucet
- 110v outlet
- Storage locker
- Vaccu Flush fresh water head
- Polished stainless steel toilet paper holder
- Framed bulkhead mirror 18" W x 28" H
- Soap holder
- Toothbrush holder
- Mosaic tile flooring
- Towel rack
- Privacy door
- (1) 24v overhead lighting

Engine Room

- **Headroom 6'7"**
- Access door
- Twin 12V71 N series 450 HP each
- Fuel filters Racor 1000 dual with selector valve and pressure gauge
- Fuel polishing system Algae x
- Fuel tank stripping pump - manual
- 40 gallon fresh oil tank with spigot
- Twin disc gears - Ratio 2:1
- Shafts 2-1/4" with stub shafts / driplless shaft seals
- Spare props 30" x 28" x 4 blade Nibral/mounted engine room
- Spare stub shaft 2-1/4" with key and locking nuts
- Power steering assist pump on starboard engine
- Emergency bilge pump on port engine
- Fuel gauges (Hersey Pneumatic) two tanks
- Fire system Kidde CO2

Stabilizers:

- Naiad model 251-1 system with 9 sq. ft. fins
- Control on/off switch pilothouse with low fluid warning light

Water Maker:

- 600 G.P.D. water makers Inc.

Bilge Pump:

- (1) 24v Groco belt driven pump
- Bow - mid - stern with 3 position manifold system

Electrical

- (1) 20 K.W. Kohler Generator 1800 RPM with Aqua lift muffler port
- (1) 20 K.W. Kohler generator 1800 RPM with Aqua lift muffler starboard
- Fuel filters Racor 500 (2) with pressure gauges
- Single 50AMP shore cord 50' length access from port or starboard engine room port light
- Battery charger / Lamarche 40 AMP / 24v
- Isolation transformer
- Capac monitor system
- 24v/110v/220v Electrical breaker panel
- Battery charger 12v Lamarche
- Generator remote starts pilothouse / master stateroom
- Generators exhaust out transom
- Air compressor Kahlenberg 24v belt drive with pressure gauge
- 24v Alternator on main engines
- (4) 8-D Batteries with boxes and lids

Work Bench

- Stainless steel sink with single lever faucet
- Vise 3-1/2" permanently fixed
- (7) Drawer Snap On tool chest built in under work bench
- Aluminum Diamond plate decking
- (1) 120v intake blower
- (1) 110v outlet at work bench

Head System

- Holding tank / located centerline engine room. Approx. 150 gallon
- (1) Overboard discharge pump (Mansfield 24v)
- (1) Overboard discharge pump (Mansfield 24v) spare in line
- Holding tank ventilation filter (Saniguard)

Fresh Water System:

- Water tank 500 gallon Intregul aluminum
- (1) 20 gallon hot water heater stern 220v Raritan
- (1) 6 gallon hot water heater bow 110v Raritan
- (1) Fresh water pump, 24v with pressure gauge (Raz Mairne)
- (1) Spare fresh water pump 24v with pressure gauge (Raz Marine)
-

Bow Thruster

- Wesmar 23 HP 48v DC (New 9/2010)
- 12" Aluminum tube
- Pilothouse and Flybridge controls
- 48 volt charger with (4) AGM batteries with boxes
- **Note:** Main breaker for bow thruster is located in engine room forward bulkhead

Exclusions

Steamship clock in main salon, personal art work, tender, tools, dolphin bronze, personal items. A detailed list will be provided at time of sale.

Broker's Remarks

"Seafire" is an excellent example of this premier West coast custom builders yard. Stephens was always referred to as a West Coast Burger. custom built for her original owner, built as "Love Affair", who owned it until April 2010 when her second owner purchased her. Her striking timeless styling combine with her efficient sea kindly hull design, 10 knots @ 15 G.P.H. and oversized stabilizers make for a comfortable cruising yacht. A must see if you desire a traditional pedigree long range motor yacht.

Исключения

При продаже яхты исключаются личные вещи владельца.

Отказ от ответственности

Компания предоставляет описание судна или яхты добросовестно, но не может гарантировать точность этой информации, а также не ручается за техническое состояние. Покупатель должен проинструктировать своих агентов или оценщиков исследовать представленную информацию более подробно, по собственному желанию.

Продажа судна или яхты, изменение цены или снятие с продажи будет происходить без предварительного уведомления.

ФОТОГРАФИИ

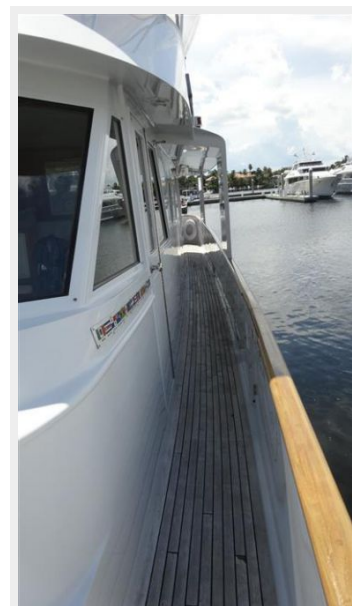
Bow



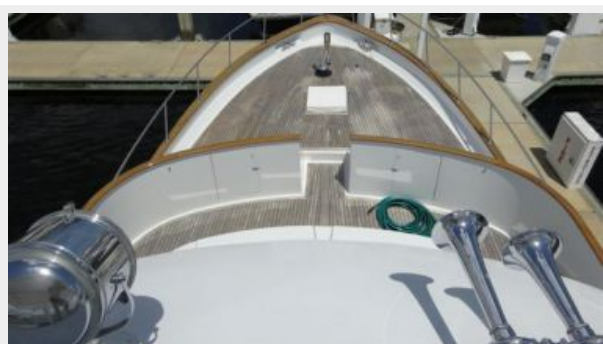
Cabin



Side Deck



Portugese Bridge Foredeck



Flybridge Helm



Flybridge Helm / Access Hatch



Flybridge Seating



Flybridge Helm Seat



Flybridge Seating



Boat Deck



Flybridge Mast



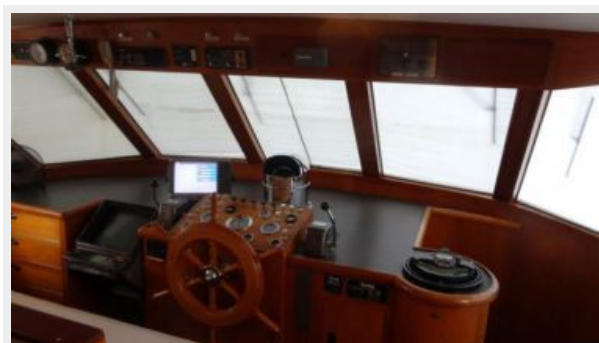
Aft Deck



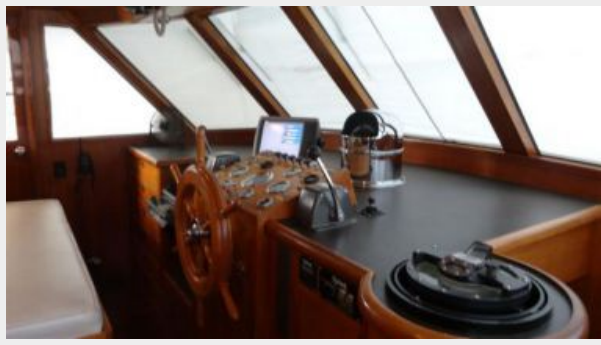
Aft Deck



Pilothouse



Pilothouse



Pilothouse Aft Bench Seat



Pilothouse Ladder



Pilothouse Helm seat



Galley



Galley



Galley



Galley Dinette



Main Salon



Main Salon



Main Salon



Stairwell to Aft Cabins



Master Stateroom



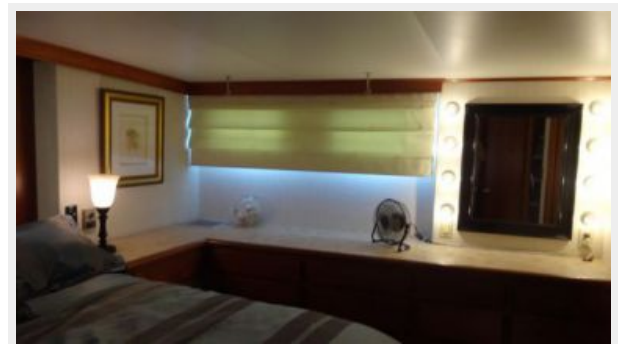
Master Stateroom



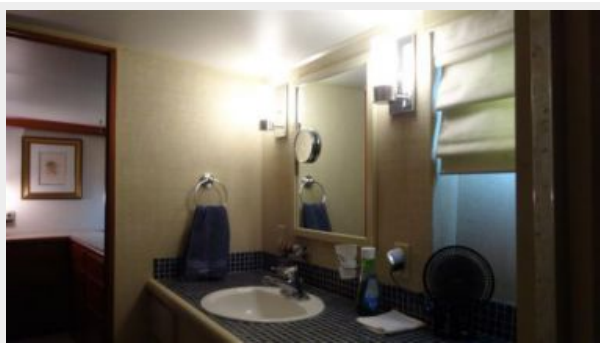
Master Stateroom



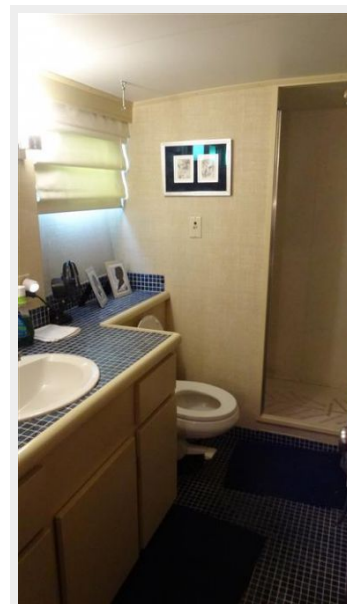
Master Stateroom



Master Head



Master Head



Aft Passageway



Twin Berth Stateroom Aft



Twin Berth Stateroom Ensuite Head



Twin Berth Stateroom Aft



Laundry Room



Forward Guest Stateroom



Forward Guests Stateroom



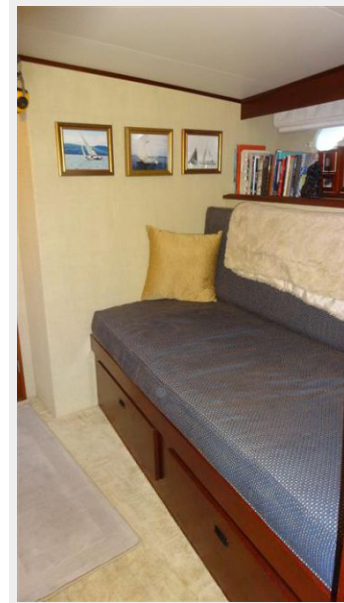
Forward Guest Stateroom



Forward Guest Head



Captain's Cabin



Forward Captain's Head

Captain's Cabin



Captain's Galley



Captain's Galley



Engine Room



Engine Room



Water Maker



КОНТАКТЫ

Андрей Шестаков (Andrey Shestakov) – ведущий яхтенный брокер отдела продаж яхт и судов компании Shestakov Yacht Sales Inc. Официальный представитель Shestakov Yacht Sales Inc. для русскоговорящих клиентов в центральном офисе компании в Майами/Форт Лодердейл/Флорида/США.

Контактная информация

Email: andrey@shestakovyachtsales.com

Web: shestakovyachtsales.com

Телефоны

Краснодарский край: **+7(918)465-66-44**

США, Майами, Флорида: **+1(954)274-4435**

Время работы

Понедельник – Суббота: **9:00 - 21:00**
EDT

Воскресенье: **Закрето**

Адрес



Harbour Towne Marina, 850 NE 3rd St,
STE 213, Dania, FL 33004