

DEVOCEAN — TIARA



Builder: TIARA

Year Built: 2008

Model: Cruiser

Price: PRICE ON APPLICATION

Location: United States

LOA: 38' 4" (11.68m)

Beam: 14' 2" (4.32m)

Max Draft: 3' 6" (1.07m)

Cruise Speed: 24 Kts. (28 MPH)

Max Speed: 32 Kts. (37 MPH)

Our experienced yacht broker, Andrey Shestakov, will help you choose and buy a yacht that best suits your needs **DEVOCEAN — TIARA** from our catalogue. Presently, at Shestakov Yacht Sales Inc., we have a wide variety of yachts available on our sale's list. We also work in close contact with all the big yacht manufacturers from all over the world.

If you would like to buy a yacht **DEVOCEAN — TIARA** or would like help answering any questions concerning purchasing, selling or chartering a yacht, please call **+1(954)274-4435**

TABLE OF CONTENTS

TABLE OF CONTENTS	2
SPECIFICATIONS	4
Overview	4
Basic Information	4
Dimensions	4
Speed, Capacities and Weight	5
Accommodations	5
Hull and Deck Information	5
Engine Information	5
DETAILED INFORMATION	6
Overview	6
Salon	6
Galley	7
Master Stateroom	7
Head	7
Helm Deck	8
Electronics & Navigation Equipment	8
Deck Equipment	9
Cockpit & Fishing Equipment	9
Engine Room & Mechanical Equipment	10
Hull & Construction	10
Electrical System	10
Remarks	11
Exclusions	11
Disclaimer	11
PHOTOS	12
Salon Convertible Dinette	12
Galley	12

Port Side Settee	12
Port Side Settee Bunks	12
Head	12
Master Berth	12
Helm	13
Helm	13
Wet Bar	13
Helm Deck Lounge	13
Cockpit	13
Cockpit	13
Cockpit	14
Cockpit Seat	14
Bow Pulpit	14
Windshield w/ Cover	14
Batteries	14
Engine Room	14
Stern	15
Plan B Arrangement	15
CONTACTS	16
Contact details	16
Telephones	16
Office hours	16
Address	16

SPECIFICATIONS

Overview

- **ONLY 450 HOURS ON CUMMINS COMMON RAILS**
- **FIGHTING LADY YELLOW HULL**
- **PLAN B ARRANGEMENT, SLEEPS 6**
- **HELM AIR CONDITIONING**
- **RIGGED TO FISH OR CRUISE**

A MUST SEE FOR THE BUYER LOOKING FOR PERFECTION! Custom ordered by her original and current owner this is a pristine example of a 38 Tiara Open. Features include the Plan B interior arrangement with sleeping accommodations for six, cruise style hardtop with arch, and upper cockpit helm air conditioning. In addition, she is rigged to fish with a cockpit bait prep & tackle center with freezer and transom live bait well. Her custom Fighting Lady Yellow hull will turn heads at any dock. PRICE REDUCED FOR IMMEDIATE SALE!

Basic Information

Category: Cruiser

Sub Category: Express

Model Year: 2008

Year Built: 2008

Country: United States

Vessel Top: Hardtop

Cockpit: Yes

Dimensions

LOA: 38' 4" (11.68m)

LOD: 38' 4" (11.68m)

Beam: 14' 2" (4.32m)

Max Draft: 3' 6" (1.07m)

Clearance: 12' 5" (3.78m)

MFG Length: 38' 0" (11.58m)

Speed, Capacities and Weight

Cruise Speed: 24 Kts. (28 MPH)

Cruise Speed RPM: 2000 Kts.

Cruise Speed Range: 335

Max Speed: 32 Kts. (37 MPH)

Max Speed RPM: 2500 Kts.

Max Speed Range: 275 Kts.

Displacement: 22600 Pounds

Water Capacity: 110 Gallons

Holding Tank: 40 Gallons

Fuel Capacity: 411 Gallons

Accommodations

Total Cabins: 1

Total Berths: 5

Sleeps: 6

Total Heads: 1

Hull and Deck Information

Hull Material: Fiberglass

Deck Material: Fiberglass

Hull Configuration: Modified Deep Vee

Hull Color: Fighting Lady Yellow

Engine Information

Engines: 2

Manufacturer: Cummins

Model: QSC 8.3 Common Rail

Engine Type: Inboard

Fuel Type: Diesel

DETAILED INFORMATION

Overview

DEVOCEAN is the newest and nicest Tiara 3800 Open available. Custom ordered by her current owner she epitomizes all that has made the Tiara Open series the benchmark for dual purpose, cruising and fishing express boats. Well engineered and superbly finished, she is equipped with enough gear to chase anything up to a grander while retaining the comforts and amenities ideal for cruising.

Custom options include:

- Bait Prep & Tackle Center with Freezer in cockpit
- Transom Live Baitwell
- 10 powder coated Rod Holders mounted aft on hardtop
- Scoponich Cockpit Rocket Launcher
- Cruise Hardtop with Arch & Full enclosures
- 18,000 BTU Helm Deck Air Conditioner
- 30" Swim Platform
- Dual Raymarine E120 Multi Function Displays
- Fighting Lady Yellow Hull

The cockpit measures 72 square feet. Molded-in steps on either side of the forward cockpit provide easy access to eight inch wide side decks serviced by handrails on the windshield frame and radar arch. Forward access is easy and safe thanks to the sturdy bow rail that is mounted atop an inch-and-a-half-high toerail and Tiara's famous nonskid.

The fully enclosed and air conditioned helm deck features curved lounge seating with table to port and a wet bar with refrigerator to starboard. The starboard side helm station offers excellent visibility and easy access to all electronics and gauges. A sliding acrylic door center line leads down three steps to the cabin.

The cabin interior features hand rubbed satin finished teak joiner work. Immediately to starboard is the galley and to port is a storage locker and settee which converts to upper & lower berths with a sliding curtain for privacy. The TV and stereo system are mounted just above the storage locker. Forward to starboard is a large convertible L shaped dinette with a rectangular hi-lo table finished in high gloss teak with a burl maple inlay. Across from the dinette is the head with stall shower, vanity and mirror. Forward center line is the master with tapered queen size pedestal berth, cedar lined hanging locker, and TV. A sliding privacy curtain separates the master and disappears in a storage compartment to port.

Salon

- Starboard L-shaped dinette w/seating for 6, storage beneath, converts to upper & lower

berths and/or double lower berth

- Teak & Maple high gloss dining table
- (2) cushioned stools on stainless steel pedestals
- Port side cushioned settee converts to upper & lower berths w/privacy curtain
- (2) reading lights
- Fiberglass companionway steps w/teak hardwood tread and storage compartment below
- Storage locker w/shelves
- 15" Majestic flat screen LCD TV
- (2) overhead acrylic hatches w/adjusters, Ocean Air® screens & privacy covers
- Marine Air 12,000 BTU air conditioner w/reverse cycle heat
- Bose 3-2-1 media system w/DVD/CD player and game port
- Teak hardwood planked sole
- Mold & mildew resistant vinyl headliner

Galley

- Corian® countertop
- Undermount sink w/single lever Moen faucet
- Panasonic stainless steel 1300W microwave oven
- Kenyon 2 burner recessed electric cooktop w/Corian® cover
- Nova Kool side by side AC/DC refrigerator/freezer
- Exhaust fan
- (2) under counter storage cabinets
- (2) storage bins
- Stainless steel backsplash

Master Stateroom

- Tapered queen size berth w/inner spring mattress, fitted bed spread, 2 pillow shams & 3 throw pillows
- (2) reading lights
- Cedar lined hanging locker
- Privacy curtain
- Storage compartments under berth w/lift-up manual actuators
- Hullside shelves and upper hullside storage cabinets, port & starboard
- Overhead hatch w/adjuster, Ocean Air® screen & privacy cover
- Majestic® 15" flat screen LCD TV
- 12V DVD player
- Marine Air 7,000 BTU air conditioner w/reverse cycle heat

Head

- Corian® counter top w/sink
- Mirrored vanity above sink
- Storage locker
- Sealand Vacuflush® toilet w/holding tank
- Fiberglass shower stall w/sliding shower door & sump pump
- Exhaust fan

Helm Deck

- Marine Air 18,000 BTU "Cool Helm" air conditioner w/reverse cycle heat
- Fiberglass "Cruise" hardtop w/arch, front & side Strataglass enclosures
- (2) overhead hatches w/built-in Ocean Air® privacy covers & screens
- 3 piece Sunbrella drop curtain
- Curved port side companion seat w/removable jump seat, cooler and storage beneath
- Table on double stainless pedestal w/3 drink holders for companion lounge
- Fiberglass companion door shroud w/ molded-in chart area and drink holders
- Oversized power helm seat
- Wet bar w/Isotherm refrigerator
- Aft facing seat
- Drop down engine room access hatch
- Acrylic sliding companionway door w/lock, built-in screen and privacy cover
- Hinged helm console w/flush mount electronics capability and drink holder
- 22" stainless steel destroyer wheel

Electronics & Navigation Equipment

- (2) Raymarine E120 12.4" Multifunction Displays w/GPS, chart plotter, sonar, radar & DSS video input
- RS125 Raystar GPS antenna
- Raymarine DSM300 digital sounder module
- Raymarine 4kW radar w/4' open array antenna
- Simrad AP26 autopilot
- Icom IC-M504 VHF radio w/hailer
- Icom IC-M304 VHF radio
- Ritchie 5" SS2000 Navigator compass
- Clarion CMD 4A AM/FM/CD stereo w/cockpit remote, amplifier, subwoofer, (4) speakers, ipod interface
- KVH M3 Tracvision satellite TV system w/DSS receiver
- VDO fuel gauges, voltage gauges, rudder angle indicator
- Smartcraft Vessel View™ engine monitoring system

Deck Equipment

- Tiara diamond pattern non-skid deck & cockpit surfaces
- Maxwell 12V chain/rode vertical anchor windlass w/foredeck foot and helm controls
- Bow pulpit w/stainless steel anchor roller
- Delta 22 lb.self launching galvanized anchor
- Anchor rode locker w/overboard drain
- One piece welded 316 stainless steel bow rail
- Black rubrail w/316 stainless steel cap
- Curved composite windshield with 1/4" tempered safety glass & center vent w/actuator
- (3) windshield wipers w/washers
- Hand grab rails on side wings port & starboard
- International navigation lights
- ACR RCL 50 remote search light
- Port & Starboard flag halyards on hardtop aft
- Dockside water inlet
- Dual electric air horns
- 10" 316 stainless steel foredeck anchor rode cleat
- (4) 12" 316 stainless steel mooring cleats
- (2) 10" 316 stainless steel spring cleats
- (2) 6" stainless steel cockpit fender cleats

Cockpit & Fishing Equipment

- Bait prep & tackle center with freezer
- 42 gallon transom live baitwell w/led light
- Cockpit fish box w/macerator pump out
- Cockpit deck live baitwell
- (4) Lee rod holders in gunnels
- Scoponich rocket launcher w/ (4) powder coated rodholders & tray
- (10) Custom powder coated rod holders aft on hardtop
- Cockpit coaming bolsters
- Fiberglass covering boards
- Transom door & gate
- Molded-in cockpit steps, port & starboard
- Self-draining cockpit w/scuppers
- (2) chrome bronze corner hawse pipes
- Raw water wash down outlet
- Fresh water wash down outlet
- (2) flush floor storage boxes
- 120V GFI outlet

- Cockpit LED courtesy lights
- Hot & cold cockpit shower
- Cockpit drink holders
- 30" fiberglass swim platform w/built-in ladder

Engine Room & Mechanical Equipment

- Twin Cummins QSC 8.3 490INT 490 h.p. Common Rail Diesels w/452 hrs.
- ZF 85A transmissions w/1.75:1 reduction gear ratios
- Oil change system for main engines, generator and transmissions
- (2) Racor fuel filters
- Twin Vernay mufflers
- (2) raw water intake strainers
- Fresh water cooling, main engines
- (2) bilge blowers, 250 CFM each
- (3) automatic 12V bilge pumps w/helm monitors, 2000 gph each
- 11 gallon hot water heater w/exchanger
- PSS® dripless shaft seals
- 2" Aquamet stainless steel prop shafts
- Teleflex® hydraulic steering system
- Teleflex® mechanical engine controls
- FE-241 agent fire suppression system w/manual pulls
- Bennett Marine® 12V hydraulic recessed trim tabs
- Electric engine hatch actuators
- Acoustical & thermal insulation
- 12V engine room lights

Hull & Construction

- Fighting Lady Yellow gelcoat hull
- Molded-in hullside engine room ventilation
- Integrated wood & foam core stringers encapsulated by hand-laid fiberglass
- Bronze seacocks on all underwater thru-hull fittings
- Bronze axe head rudders & struts
- Michigan EPX-300, 25" X 32", 3 blade nibral propellers w/ #7 cup

Electrical System

- 12V & 120V electrical system w/master distribution panel under cabin steps
- 240V, 50 amp 65' shore power cord w/ 30 amp adapter
- Glendinning cable recoiler

- Cable TV/phone inlet w/65' dockside cord
- 9 kW Onan generator w/sound shield, 604 hrs.
- 12V two bank battery system, (3) engine batteries, (3) house batteries
- Victron Centaur 60 amp battery charger
- Battery parallel system
- Reverse polarity indicator
- Central bonding system

Remarks

This is a low hour perfect example of a 38 Tiara Open. All services are documented and up to date. Batteries and hoses were all recently renewed, as well as the Strataglass helm enclosure. **THE NEWEST AND NICEST AVAILABLE, TRULY TURN KEY!!**

Exclusions

Owner's personal belongings.

Disclaimer

The Company offers the details of this vessel or yacht in good faith but cannot guarantee or warrant the accuracy of this information nor warrant the condition of the vessel. A buyer should instruct his representatives, agents, or his surveyors, to investigate such details as the buyer desires validated. This vessel or yacht is offered subject to prior sale, price change, or withdrawal without notice.

PHOTOS

Salon Convertible Dinette



Galley



Port Side Settee



Port Side Settee Bunks



Master Berth



Head



Helm



Helm



Wet Bar



Helm Deck Lounge



Cockpit



Cockpit



Cockpit



Cockpit Seat



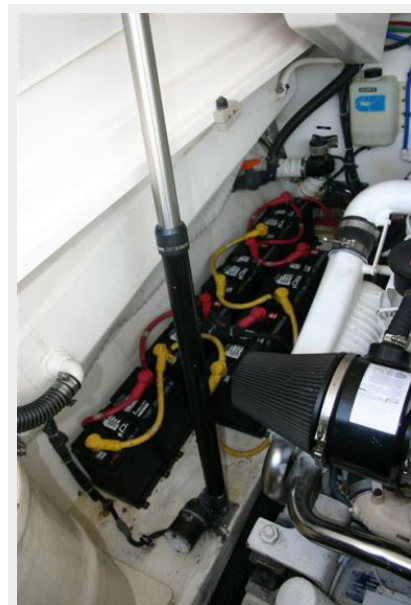
Bow Pulpit



Windshield w/ Cover



Batteries



Engine Room



Stern



Plan B Arrangement



CONTACTS

Andrey Shestakov, leading yacht broker of the sales department of Shestakov Yacht Sales Inc. Shestakov Yacht Sales Inc., the official representative of the Miami/Fort Lauderdale FL headquarters.

Contact details

Email: andrey@shestakovyachtsales.com

Web: shestakovyachtsales.com/en/

Telephones

USA: +1(954)274-4435

Office hours

Monday – Saturday: **9:00 - 21:00** EDT

Sunday: **closed**

Address



Harbour Towne Marina, 850 NE 3rd St,
STE 213, Dania, FL 33004