

41-147 — CRUISERS YACHTS



Builder: [Cruisers Yachts](#)

LOA: 41' 0" (12.50m)

Year Built: 2014

Beam: 13' 0" (3.96m)

Model: Cruiser

Max Draft: 3' 3" (0.99m)

Price: PRICE ON APPLICATION

Location: United States

Our experienced yacht broker, Andrey Shestakov, will help you choose and buy a yacht that best suits your needs 41-147 — Cruisers Yachts from our catalogue. Presently, at Shestakov Yacht Sales Inc., we have a wide variety of yachts available on our sale's list. We also work in close contact with all the big yacht manufacturers from all over the world.

If you would like to buy a yacht 41-147 — Cruisers Yachts or would like help answering any questions concerning purchasing, selling or chartering a yacht, please call +1(954)274-4435

TABLE OF CONTENTS

TABLE OF CONTENTS	2
SPECIFICATIONS	3
Overview	3
Basic Information	3
Dimensions	3
Speed, Capacities and Weight	3
Accommodations	3
Hull and Deck Information	4
Engine Information	4
DETAILED INFORMATION	5
Dealer Selected Options	5
Features	6
Standard Features	7
Photo Note	10
Exclusions	11
Disclaimer	11
PHOTOS	12
CONTACTS	18
Contact details	18
Telephones	18
Office hours	18
Address	18

SPECIFICATIONS

Overview

Call for special boat show pricing! With the introduction of the new sporty 41 Cantius, you'll never again be in search of the water's most exciting venue. The 41 is it. Designed with features and amenities that create the perfect atmosphere for entertaining, you're the host with the most at any dock. It's all a result of the 41's much-lauded open-concept layout, which invites everyone to participate in the experience and stay connected.

Basic Information

Category: Cruiser

Sub Category: Sport Cruiser

Model Year: 2015

Year Built: 2014

Country: United States

Vessel Top: Hardtop

Dimensions

LOA: 41' 0" (12.50m)

LOD: 0' 0" (0.00m)

Beam: 13' 0" (3.96m)

Max Draft: 3' 3" (0.99m)

Clearance: 10' 6" (3.20m)

MFG Length: 42' 8" (13.00m)

Speed, Capacities and Weight

Displacement: 25000 Pounds

Water Capacity: 75 Gallons

Holding Tank: 50 Gallons

Fuel Capacity: 300 Gallons

Accommodations

Total Cabins: 1

Total Heads: 1

Hull and Deck Information

Hull Material: Fiberglass

Hull Color: White

Engine Information

Manufacturer: Volvo

Model: D6 500 IPS

Engine Type: I/O

Fuel Type: Diesel

DETAILED INFORMATION

Dealer Selected Options

Cockpit Seating,Latte
Interior,Walnut
Sunlounge,Transom,Cover,Black
Chaise Lounge,Foredeck,Black
Cushion,Sunlounge/Tables,Latte
Sunlounge,Transom,Latte
Storage,Cockpit
Blinds,UPR Salon
Central Vacuum,120V
Floor,Amtico,Salon,UPR,Walnut
Mattress,Therapeutic Foam,FSR
Sheets,Custom Fitted w/P.Cases,FSR
Skyshade-Hardtop
TV/DVD,ASR,US,Walnut
TV/DVD,FSR,US,Walnut
Towel Package
Treads,Walnut,Entry,Cabin
Head,Centrifuge W/H.Tank/Mac
Algae-X Fuel Cond. System
Anchor,Polished Stainless
Anchor Washdown System
Anti-Corrosion ProtectionSystem
Mat,Woven,Cockpit
Ckpt Wshdwn Sys,Fresh Water
Grill,Electric,Cockpit
Oil Change Sys W/Gen,IPS
Upr Sal Refrig/Icemkr,120V,W
Trim Kit,Sliding Door,SS
Underwater Lighting
Radio,VHF,US
Sail Away Kit

Features

Helm

With a navigational center that offers the latest technology, you're in unique command of the vessel and the monitoring of twin Volvo Penta IPS 600 engines. Volvo Penta IPS engines with joystick maneuvering are standard, and ensure more efficient and responsive handling. Standard is a double helm seat featuring a flip up bolster. A two-piece solid windshield featuring double windshield wipers is standard. The 41 Cantius comes with port and starboard power air vents, located where the side windows meet the windshield. It also comes with a blackout/privacy screen that attaches from the outside to complement the easy pull-down shades throughout the inside of the remainder of the helm area.

Cockpit

The spacious cockpit is ready for anything, and features both port and starboard access, L-shaped seating for 6 with storage below, a 54" walk-through patio door, a standard 13.0 kw gas generator, 40,000 BTU AC/heat unit. and an optional grill.

Upper Salon

The contemporary and integrated upper salon offers 6'3" of headroom, a large power sun roof with sun shade, power opening window vents at both port and starboard, and windows in all directions for outstanding views. And to enhance your entertaining, a sink, ample storage, and an optional fridge/ice maker combo unit, and a standard 22" TV above the countertop that can pivot to view from the cockpit.

Master Stateroom

The master stateroom is forward and lulls you to sleep with the gentle sounds of ripples breaking across the bow. With a queen island berth, plenty of storage and 6'9" of headroom.

Forward Head

The master head provides full-standing headroom, a separate shower, and opening port holes for natural light and ventilation.

Aft Stateroom

The midship guest stateroom features split bunk accommodations which can be converted to a queen berth, and a private head with separate vanity.

Aft Head

A separate, private head offers the luxury of a full-standing shower stall. A stylish vanity sits outside the head compartment with solid-surface countertops, and storage above and below.

Galley

The lavish galley offers everything you'll need to keep the get-together going. With a sink, two-burner stove, fridge/ice maker combo, microwave/convection oven and beautiful amtico galley flooring.

Standard Features

EXTERIOR

- Anchor Roller, Mooring Bit & Cleat
- Boarding Gate—Transom
- Bottom Paint, Anti-Fouling
- Bow Rail, Welded Stainless Steel
- Bulkhead & Door—FSR
- Cabin Walk-Around
- Cockpit Carpeting
- Cockpit Shower (Hot/Cold)
- Dockside Water Inlet
- Drink Holders
- Fender Storage
- Fiberglass Cockpit, Self-Draining
- Gunwale Molding, Stainless Steel
- Fully Enclosed Helm & Upper Salon, Hardtop w/Sliding Sunroof, Tri Slide Helm Door, Power Accuated Starboard/Port Air Vents
- Hardware—Deck Cleats (Docking, Fender & Platform)
- Hatch—Bow w/Screen
- Helm Captain Seat, Double
- Helm Companion Dinette/Lounge & Tables
- Rope Locker—Bow

-
- Seat, L-Shaped—Cockpit
 - Seat, Starboard, Jump
 - Storage Transom
 - Swim Platform, Extended, w/Boarding Ladder
 - Transom Bar Top w/2 Standard Bar Stools
 - Windlass (Foredeck Foot Switch, Anchor, 30' of 5/16" Chain & 126' of 5/8" Line)
 - Windshield Wipers w/Winds

GALLEY & HEAD

- Exhaust Fan—Head Compartments (2)
- Galley Countertop—Solid Surface
- Head Compartment—FSR Dual Entrance
- Head Compartment—ASR Private
- Head, Centrifuge Electric w/Holding Tank (2)
- Hot Water System, 11 Gallon/42 Liter
- Microwave Oven
- Refrigerator/Freezer, Electric—Galley
- Showers w/Sump Pump (2)
- Stove, Electric, 2 Burner
- Sink & Faucet w/Spray—Galley
- Vanity w/Sink (2)

INSTRUMENTS

- Compass
- Digital Depth Finder (N/A w/Premium Electronics)
- Horn, Air
- Hourmeters (2)
- Instrumentation

- Spotlight, Remote

INTERIOR

- Berth, Queen—Forward Stateroom
- Berth, Twin Bunks Aft Stateroom (Converts to Queen)
- Blinds—FSR
- Carpeting—Cabin
- Clothes Lockers, Cedar-Lined
- Doors & Bulkhead—FSR
- Duvets & Pillow Shams
- Mattress, Standard Therapeutic—FSR
- Windows—FSR Insert Glass
- Windows—Hull Port, FSR (2), ASR (2)

MECHANICAL

- Air Conditioner/Heater (40,000 BTU)
- Battery Charging System & Monitor, 50 Amp
- Battery Isolator
- Battery Parallel Switch
- Bilge Coating, White— Bilge & Engine Room
- Bilge Pumps (3) w/High Water Alarm
- Blowers—Bilge
- Bonding System w/Transom Zinc Plate
- Bronze Seacocks & Thru-Hulls on all Underwater Fittings
- Carbon Monoxide Detectors (3)
- Dockside Wiring, 120V, 50 Amp, w/power Retractor Cord 50'
- Dockside Wiring, 220V, 50 Amp, w/power Retractor Cord 50'
- Fire Extinguisher, Automatic (w/Engine Shutdown—Diesel)

-
- Fire Extinguishers
 - Fuel Over Overflow Recovery System (EPA Cert.)
 - Generator, Diesel (Kohler®) a. 13.5 kW 120V (w/Sound Shield) b. 11 kW 220V (w/Sound Shield)
 - Ground Fault Interrupter Outlet
 - Lights—Bilge
 - Lights—Cabin
 - Lights—Cabin Side Boarding
 - Lights—Cockpit Courtesy
 - Lights—Navigational, International
 - Master Panel, AC/DC w/Voltmeters & Function Indicators
 - Propeller, Nibral
 - Sea Water Strainers
 - Shaft Logs, Dripless
 - Steering System, Fly-by-Wire & Joystick Technology
 - Steering Wheel, Tilt
 - Trim Tabs, Electro-Hydraulic w/Zinc Plates on Flaps

STEREO & TV

- MP3 Input Port
- Premium Stereo Package, Includes: (2) Cockpit Speakers, Amplifier & 10" Subwoofer
- Stereo Components—(2) Cockpit Speakers, (2) Salon Speakers & Helm Remote
- TV, Upper Salon 26"

WEATHER COVERS

- Cockpit Seat Cover – Front Cabin Window Cover

Photo Note

PROFILE PHOTO IS SISTERSHIP.

Exclusions

Owner's personal belongings.

Disclaimer

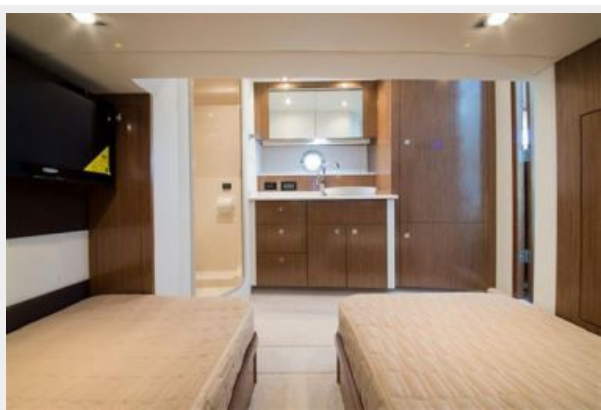
The Company offers the details of this vessel or yacht in good faith but cannot guarantee or warrant the accuracy of this information nor warrant the condition of the vessel. A buyer should instruct his representatives, agents, or his surveyors, to investigate such details as the buyer desires validated. This vessel or yacht is offered subject to prior sale, price change, or withdrawal without notice.

PHOTOS













CONTACTS

Andrey Shestakov, leading yacht broker of the sales department of Shestakov Yacht Sales Inc. Shestakov Yacht Sales Inc., the official representative of the Miami/Fort Lauderdale FL headquarters.

Contact details

Email: andrey@shestakovyachtsales.com

Web: shestakovyachtsales.com/en/

Telephones

USA: +1(954)274-4435

Office hours

Monday – Saturday: **9:00 - 21:00** EDT

Sunday: **closed**

Address



Harbour Towne Marina, 850 NE 3rd St,
STE 213, Dania, FL 33004