

RENDEZVOUS — BROWARD



Судостроитель: BROWARD

Год постройки: 1991

Модель: Моторная яхта

Цена: **ЦЕНА ЯХТЫ ПО ЗАПРОСУ**

Местонахождение: United States

Длина общая: 100' 0" (30.48m)

Ширина: 20' 0" (6.10m)

Мин. осадка: 5' 8" (1.73m)

Макс. осадка: 6' 0" (1.83m)

Крейс. скорость: 12 Kts. (14 MPH)

Макс. скорость: 14 Kts. (16 MPH)

Купить **RENDEZVOUS — BROWARD** а также выбрать подходящую вам яхту из нашего каталога яхт вам поможет опытный яхтенный брокер Андрей Шестаков. На сегодняшний день компания **Shestakov Yacht Sales Inc.** имеет большое количество яхт в собственном списке продаж, а также тесно сотрудничает со всеми крупными яхтенными производителями по всему миру.

Для того чтобы купить яхту **RENDEZVOUS — BROWARD** а также проконсультироваться по любому вопросу связанному с покупкой, продажей, чартером яхт позвоните по телефону **+7(918)465-66-44**.

ОГЛАВЛЕНИЕ

ОГЛАВЛЕНИЕ	2
ХАРАКТЕРИСТИКИ	6
Основная информация	6
Размеры	6
Скорость, вместимость и масса	6
Размещение	6
Корпус и палуба	6
Информация о двигателе	7
ПОДРОБНОЕ ОПИСАНИЕ	8
Vessel Walkthrough	8
Main Salon	8
Day Head & Companionway	9
Galley	9
Master Stateroom	9
Queen Stateroom	10
Twin Guest Stateroom	10
Lower Companionway	10
Crew Quarters	10
Pilothouse Electronics	11
Flybridge Electronics	11
Flybridge Equipment	12
Enclosed Bar	12
Cockpit & Swim Platform	13
Deck Equipment	13
Electrical Equipment	14
Engine Room	14
Updates	14
Salesman's Remarks	15

Exclusions	15
Исключения	15
Отказ от ответственности	16
ФОТОГРАФИИ	17
Cockpit Table	17
Cockpit Table	17
Polished Aft Deck Cap Stan	17
New Teak Decks	17
Enclosed Air Conditioned Aft Deck	18
Large Aft Deck Windows	18
Aft Deck	18
Aft Deck Bar	18
Main Salon Looking Aft	18
Gold Plated Sink	18
Dining Table	19
Dining Table/Main Salon	19
Galley	19
Galley	19
Country Kitchen	19
Dinette	19
Dinette	20
Overhead Pilothouse	20
Pilothouse Helm Seating	20
Pilothouse Helm	20
Master Stateroom	20
Master Stateroom King Berth	20
Master Head Jacuzzi Tub	21
VIP Stateroom	21
VIP Head	21

Twin Stateroom with Pullman	21
Twin Stateroom Head	22
Washer/Dryer	22
Crew Berths	22
Captain's Cabin	22
Flybridge Helm	23
Flybridge Helm	23
Flybridge Helm Electronics	23
Flybridge Helm	23
Flybridge Helm	23
Flybridge	23
Flybridge	24
Flybridge	24
Flybridge	24
Flybridge	24
Flybridge	24
Flybridge	24
Flybridge	24
Flybridge	24
Flybridge	25
Flybridge	25
Flybridge	25
Flybridge	25
Flybridge	25
Engine Room	25
Engine Room	26
Layout	26
КОНТАКТЫ	27
Контактная информация	27
Телефоны	27
Время работы	27

Адрес

27

ХАРАКТЕРИСТИКИ

Основная информация

Тип судна: Моторная яхта	Модельный год: 1991
Год постройки: 1991	Страна: United States
Номер регистрации в береговой охране: 731861	Верх: Bimini Top
	Кубрик: Да

Размеры

Длина общая: 100' 0" (30.48m)	Ширина: 20' 0" (6.10m)
Мин. осадка: 5' 8" (1.73m)	Макс. осадка: 6' 0" (1.83m)

Скорость, вместимость и масса

Крейс. скорость: 12 Kts. (14 MPH)	Макс. скорость: 14 Kts. (16 MPH)
Чистый вес: 144 Pounds	Вместимость воды: 740 Gallons
Вместимость сточного бака: 580 Gallons	Объем топливного бака: 7650 Gallons

Размещение

Всего кают: 3	Спальные места: 6
Всего ком. состава: 5	Каюта капитана: Да
Каюты экипажа: 3	Койки экипажа: 6

Корпус и палуба

Материал корпуса: Aluminum	Материал палубы: Teak over Aluminum
----------------------------	-------------------------------------

Информация о двигателе

Двигатели: 2

Производитель: Detroit Diesel

Модель: 12V-92 TA

Тип двигателя: Inboard

Тип топлива: Diesel

ПОДРОБНОЕ ОПИСАНИЕ

Vessel Walkthrough

RENDEZVOUS is a classic 100' Broward Cockpit MY featuring Broward's most desirable layout used during this era. She features three staterooms for the owner's party with a generously sized full beam master stateroom with his and her baths. The port guest stateroom features a queen berth while the starboard guest includes two twin berths and a pullman berth. Both guest staterooms have en-suite heads with stall showers. The crew quarters are located forward in the bow and include three separate crew staterooms and a crew head. The large main salon features a comfortable seating area aft and formal dining area forward, with new carpet and stone counter tops. An enclosed bar is aft to the salon and features a full service bar to port with marble countertops and three (3) chrome and leather bar stools. A "U" shaped leather sofa with hi/low marble-topped table is to starboard. The flooring is marble and large windows with two (2) glass sliding aft doors offer unobstructed views. Aft of the enclosed bar area through two (2) sliding glass doors is a small aft deck on the upper level with stairways at port and starboard leading to the cockpit area. The cockpit area features a teak table, two (2) teak chairs with cushions, fresh water hot/cold handheld shower, stereo speakers with controls, and a large swim platform with detachable ladder. The aft deck and swim platform have teak decks that were installed new in 2012. There is a watertight hatch leading from the cockpit to abundant storage areas under the aft deck. This storage area features three (3) chest freezers for provisions, storage for diving equipment, fishing equipment, etc. Forward on the main deck is the spacious "country kitchen" style galley with a large dinette, new stone counter tops, and new faux wood flooring. Access to the crew quarters is via a stairwell forward in the galley. Access to the raised pilothouse is from either port or starboard forward of the main salon dining area. The flybridge is accessed via stairs up from the pilothouse. The flybridge provides an excellent area for outdoor entertaining with a walk-up bar, gas grill, and abundant seating and lounging areas which are both covered and uncovered. The boat deck houses a Marquipt davit and Yamaha Wave Runner. The vessel was totally refit in 2009, and again in 2013 with all work managed and supervised by a highly experienced Broward yacht captain. The refit was inclusive of many of the ships engine room systems and equipment including both main engines two new generators and upgraded stabilizers. The refit also included interior updates and upgrades to include all soft goods, carpeting and fabrics.

Main Salon

- Large upholstered U-shaped sectional sofa
- Upholstered occasional chair with ottoman
- Oval granite top coffee table with wrought iron base
- Built-in entertainment center to starboard with granite top with Panasonic 42" plasma TV, Onkyo AM/FM stereo receiver, Samsung Blue Ray DVD player, Surround sound stereo speakers, Xantech integrated audio system with iPod and Sat TV

- (2) Decorative table lamps
- New carpeting throughout vessel (2013)
- Leather upholstered panel overhead with custom lighting
- Custom window treatments and valances
- Oval dining table with Maple Burle inlay and (6) wood and upholstered dining chairs
- L-shaped buffet cabinet to port with granite top
- Matching buffet cabinet to starboard with granite top
- Custom overhead soffit and custom lighting over dining table
- Stairway with wood railings and glass partition leading down to staterooms
- Ceramic tile flooring in Pilothouse (new 2013)

Day Head & Companionway

- Day head to stbd with marble vanity and flooring, gold plated sink, Jado fixtures and Microphor head
- Cedar lined utility closet to port
- Sliding entry doors, port and starboard
- Marble flooring in port and stbd entryways
- Marble flooring in Pilothouse

Galley

- Country kitchen style galley with ash wood interior
- Viking stainless steel refrigerator/freezer
- Viking stainless steel 4-burner stove with convection oven
- Samsung microwave
- Frigidaire stainless steel dishwasher
- (2) Sub-Zero under counter refrigerator drawers
- U-line under counter freezer
- Double stainless steel sink with Insinkerator garbage disposal
- Dinette with granite top, settee with storage below and 3 chairs
- Granite counter tops and island bar
- Toshiba 19" flat screen TV on swivel
- Hidden wine storage rack
- Ample cabinets and storage areas with built-in drawers
- Custom window treatments with 1" wood blinds and drapes
- (2) Overhead stereo speakers and smoke alarm
- Oak wood laminate flooring

Master Stateroom

- King size berth with custom spread and shams
- Built-in nightstands with granite tops and reading lights
- Built-in dresser drawers with granite tops, storage areas and lighted vanity
- Entertainment center with TV, DVD and VCR
- New carpeting (2013)
- Walk-in cedar lined closet to port
- Large cedar lined hanging locker with safe to starboard
- His and Her head with Jacuzzi tub and shower, Microphor heads, Kohler bidet, granite top vanities, Jado fixtures and marble flooring

Queen Stateroom

- Queen-sized berth with custom spread and shams
- (2) Built-in night stands with granite tops and reading lamps
- Emerson TV and Sony DVD player
- (2) Overhead stereo speakers
- Cedar lined walk-in closet
- New carpeting (2013)
- Smoke alarm
- Private bath with shower, granite vanity top, custom fixtures and marble flooring

Twin Guest Stateroom

- Twin berths with custom spread and shams
- Additional pullman berth
- Built-in dresser with granite top
- Emerson TV and Sony DVD player
- (2) Overhead stereo speakers
- New carpeting (2012)
- Smoke alarm
- Private bath with shower, granite vanity, Jado fixtures and marble flooring

Lower Companionway

- Whirlpool Thin/Twin stackable washer/dryer
- (2) Linen closets

Crew Quarters

- Captain's cabin to port aft with single berth and storage below, cedar lined closet and

Sanyo 20" LCD TV and Sony DVD player

- Crew cabin forward with (4) single upper and lower berths, drawer storage below, cedar-lined closet, Sanyo 20" LCD TV, Sony DVD player, (2) reading lamps and escape hatch to foredeck
- Engineer's cabin to starboard with single berth, storage below, Apex 20" LCD TV and Sony DVD player
- Crew head with faux marble top vanity, molded sink, medicine cabinet, stall shower and vinyl flooring
- Sub-Zero under-counter refrigerator and storage closet in crew companionway
- Aft entrance to engine room

Pilothouse Electronics

- Garmin 48-mile radar
- Furuno GPS Navigator
- Garmin 3206 GPS chart plotter
- Garmin digital depth finder
- Simrad AP28 autopilot with remote
- Furuno FCV 1000 depth finder
- Furuno AIS system
- Nobletech navigational system
- (2) BandG depth finders, meters and feet
- HP 19" computer monitor - rear camera, two engine rm views, side decks
- Bow thruster controls
- Stabilizer controls
- KVH M9 Trac Vision Sat TV with 9 Direct TV receivers and 6 Galaxy Caribbean receivers
- Wi-Fi wireless router and booster
- Danforth compass
- Icom ICM 602 VHF radio
- Broward safety monitoring system
- CCTV monitor for (2) engine room and stern cameras

Flybridge Electronics

- Garmin 48-mile radar repeater
- Furuno Nav Net GPS chart plotter
- Simrad AP28 autopilot with remote
- Garmin 3210 GPS chart plotter
- Garmin digital depth finder
- Nobletech navigational system repeater
- Furuno 10" monitor for Nobletech, camera, and AIS Systems
- Bow thruster controls

- Danforth compass
- Icom ICM 602 VHF radio
- CCTV monitor for stern camera views

Flybridge Equipment

- Bench helm seat with foot rest and cushions
- Port and Starboard bench seating with storage below
- Aft bench seat with teak oval table and 4 chairs
- Bar behind helm seat with s/s sink, stone counter top, s/s ice maker, s/s wine cooler, s/s two-drawer pull out refrigerator
- Bull s/s propane BBQ grill with 2 fiberglass tanks
- Folding Bimini top with extension to arch and ¾ enclosure
- Plexiglas and s/s windscreen
- Modern three-piece awning system with s/s poles
- Yamaha wave runner
- Marquipt 2000 lb. davit
- One (1) 8-person canister life raft
- Three (3) ARC Search lights (2 forward facing and 1 aft facing)
- Two (2) Cockpit flood lights
- Two (2) Spreader lights for bridge deck
- Six (6) Polyplaner stereo speakers with selector switch
- Xantech audio controls
- LED courtesy lighting
- Two (2) stone topped cocktail tables
- Three (3) designer chairs with cushions
- Two (2) custom aluminum bench seats with cushions and storage beneath
- Outdoor carpet for flybridge seating area
- 55" Flat screen TV
- I-Pod docking station
- XM Satellite Radio
- Blu Ray DVD system

Enclosed Bar

- New marble flooring (2013)
- Leather U-shaped sofa
- Adjustable hi-lo coffee table with marble top
- Bar with granite top, Sub-Zero refrigerator, U-line icemaker, sink, bottle and glass storage
- (3) Leather upholstered bar stools with chrome bases
- Custom window treatments and valances
- Sanyo 26" LCD TV

- (2) Overhead speakers
- Xantech audio control
- Overhead controls for aft searchlight and LED lighting
- Sliding double door entry to euro style stairs leading to cockpit and swim platform

Cockpit & Swim Platform

- Teak decking on stairs, cockpit and swim platform (2012)
- Teak oval table with 2 teak folding chairs with cushions
- Lazzarette area with 3 chest freezers
- Pull out helm controls (serviceable but disconnected)
- Removable sun awning
- (2) Ideal capstans
- Hot and cold freshwater washdown
- (4) Rod holders
- Teak caprail
- Stainless steel railing with gate to swim platform
- Stainless steel 4-step swim ladder
- Storage under cockpit deck accessed by three deck hatches
- (2) Ployplaner stereo speakers
- Xantech audio control
- Centerline watertight door to lazarette storage
- 50 amp shore power receptacle to power tenders

Deck Equipment

- Marquipt 7-step boarding stairs
- Midship boarding gates, port and stbd
- 4-step swim ladder
- Sunpad on foredeck with storage below
- Ideal anchor windlass
- Fjord 200-lb anchor with 300' 3/8" chain
- Marquipt 2000lb davit with remote
- Stainless steel bow rails
- Teak caprails
- (3) Trumpet Buell horn
- 12" Stainless steel ship's bell
- (2) 24" life ring
- (20) life jackets
- ACR 406 EPIRB
- Broward euro style flagstaff

Electrical Equipment

- (2) Phasor 44KW generators with John Deere motors (Hours: 2799 Stbd/3277 Port)
- (2) Acme isolation transformers and power boosters
- Charles 12v constavolt battery charger for house batteries
- Protech 4 24v constavolt battery charger for main engine batteries
- (4) 12V lead/acid main engine start batteries
- (2) 12V lead/acid generator start batteries
- (2) 12V lead/acid batteries on flybridge with 12V battery charger for electronics
- (2) 100 amp 80' shorepower cords with 50' and 25' extensions
- 50 AMP shorepower receptacle in cockpit to plug in tenders
- During refit, majority of exterior lights were changed to LED

Engine Room

- Twin Detroit Diesel 12V-92 TA's (Hours: Port 1679 SMOH/Stbd 1673 SMOH)
- Naiad model 301 stabilizers with 9 sq. ft. fins (upgraded with new seals, hoses and hydraulics)
- HPS hydraulic bow thruster, 45 hp with 12" prop
- Offshore Marine Labs 1800 GPD watermaker - new membranes 1/14
- (2) Marine Air 15-ton chilled water A/C system, (2) 5-ton compressors
- Hynautic power assist steering
- (2) Emerson raw water pumps for A/C
- (3) Engine room blowers (port, center, stbd)
- Holding tank macerator pump
- Fill-Rite fuel transfer system
- (3) Racor F-1000 fuel filters for each engine
- Racor F-500 fuel filter for each generator
- Fuel priming system for main engines and generators
- RCI fuel polishing during fuel transfer
- Halon 1301 fire suppression system with 50lb tank (serviced 12/14)
- (2) 40 gal oil tanks for new and old oil with transfer pump
- 40 gallon hot water heater (located behind master closet)
- 30 gallon hot water heater (in engine room)
- 580 gallon Holding tank
- Forca primary air compressor for horns and heads (2012)
- Rigid 150psi air compressor with condensation filter for horns/heads (emergency back-up)
- Groco sea strainers
- Microphor freshwater flush heads throughout
- Frigidaire stackable washer/dryer

Updates

2010/2011 Both main engines and both generators were rebuilt in early 2010. Since the rebuilds, engines and generators have been properly maintained Galley completely redone, including new cabinets (top and bottoms), new granite counter and table tops, new Viking Stainless Steel appliances, new flooring, new Sub Zero refrigerator drawers, etc. Sub Zero refrigerator in aft bar area. M-9 KVH Satellite Dish installed along with eight U.S. Direct TV boxes and four Galaxy Direct TV boxes (for Caribbean, Central and South America service.) **2011/2013** Had upper sections of vessel painted (from teak railing upward. This was done while in Costa Rica) Had old teak cockpit deck removed and new solid teak plank deck installed (individual pieces of teak with no screws) Had hull of vessel painted (from teak railing down. This was done while in Dania Beach, FL) **2013/Present** New marble flooring in bar area. New chrome-based bar stools. New stone bar and table tops. New stainless steel sink and fittings. New seat upholstery. New shades/blinds. New carpeting in salon, owner, guests and crew stateroom areas. New stone countertops throughout entire vessel, including salon areas, owner and guest stateroom areas. Dining area chairs reupholstered (six) New stone flooring tiles in pilothouse area Both engines serviced by Gary's Marine Diesel Services, Inc. (This included cleaning all heat exchangers, flushing cooling system and replacing all fluids, adjusting valves, full tune up of engines. Note: Only one injector was defective and it was replaced with new.) New Chilled Water A/C unit installed recently. (Other unit is new within last 2 years). New Eisenglass panels on flybridge Bimini top enclosure New updated battery charger for main engines Complete Flybridge seating area renovation in 2015, including appliances, cushions nad modern awning systems with s/s poles

Salesman's Remarks

RENDEZVOUS is a "must see" 100' Broward. Throughout her years of service, the vessel has had an A1 maintenance record with each owner undertaking updates and upgrades to furnishings and equipment throughout the vessel to include a major refit in 2009 and again in 2013. This yacht features many areas for entertaining including the enclosed aft deck, cockpit and large flybridge area. All the equipment has been serviced; the furnishings are fresh and would be immediately ready to go cruising!

Exclusions

Exclusions to include but are not limited to, owner's personal belongings, shark sculpture and painting in main salon. A detailed list of exclusions to be provided at the time of sale upon written request.

Исключения

При продаже яхты исключаются личные вещи владельца.

Отказ от ответственности

Компания предоставляет описание судна или яхты добросовестно, но не может гарантировать точность этой информации, а также не ручается за техническое состояние. Покупатель должен проинструктировать своих агентов или оценщиков исследовать представленную информацию более подробно, по собственному желанию. Продажа судна или яхты, изменение цены или снятие с продажи будет происходить без предварительного уведомления.

ФОТОГРАФИИ

Cockpit Table



Cockpit Table



New Teak Decks



Polished Aft Deck Cap Stan



Large Aft Deck Windows



Enclosed Air Conditioned Aft Deck



Aft Deck



Aft Deck Bar



Gold Plated Sink



Main Salon Looking Aft



Dining Table/Main Salon



Dining Table



Galley



Galley



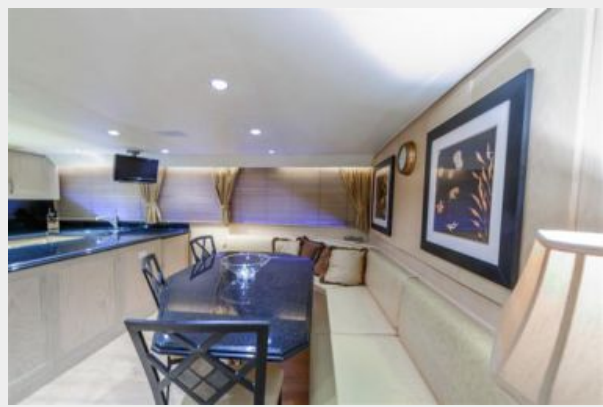
Country Kitchen



Dinette



Dinette



Overhead Pilothouse



Pilothouse Helm Seating



Pilothouse Helm



Master Stateroom King Berth



Master Stateroom



Master Head Jacuzzi Tub



VIP Stateroom



VIP Head



Twin Stateroom with Pullman



Twin Stateroom Head



Washer/Dryer



Crew Berths



Captain's Cabin



Flybridge Helm



Flybridge Helm



Flybridge Helm Electronics



Flybridge Helm



Flybridge Helm



Flybridge



Flybridge



Flybridge



Flybridge



Flybridge



Flybridge



Flybridge



Flybridge



Flybridge



Flybridge



Flybridge



Flybridge



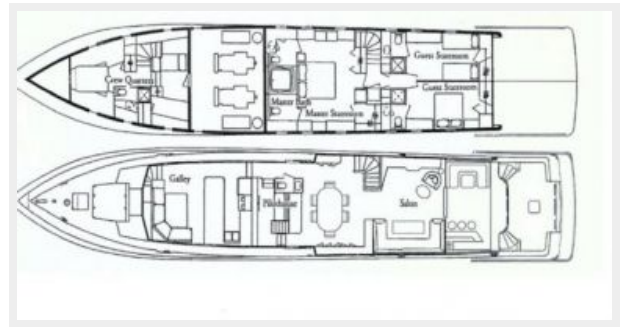
Engine Room



Engine Room



Layout



КОНТАКТЫ

Андрей Шестаков (Andrey Shestakov) – ведущий яхтенный брокер отдела продаж яхт и судов компании Shestakov Yacht Sales Inc. Официальный представитель Shestakov Yacht Sales Inc. для русскоговорящих клиентов в центральном офисе компании в Майами/Форт Лодердейл/Флорида/США.

Контактная информация

Email: andrey@shestakovyachtsales.com

Web: shestakovyachtsales.com

Телефоны

Краснодарский край: **+7(918)465-66-44**

США, Майами, Флорида: **+1(954)274-4435**

Время работы

Понедельник – Суббота: **9:00 - 21:00**
EDT

Воскресенье: **Закрито**

Адрес



Harbour Towne Marina, 850 NE 3rd St,
STE 213, Dania, FL 33004