

## VICTORY — BOSTON WHALER



**Судостроитель:** BOSTON WHALER

**Длина общая:** 37' 0" (11.28m)

**Год постройки:** 2012

**Ширина:** 11' 6" (3.51m)

**Модель:** Walkaround с парусом

**Цена:** ЦЕНА ЯХТЫ ПО ЗАПРОСУ

**Местонахождение:** United States

Купить **VICTORY — BOSTON WHALER** а также выбрать подходящую вам яхту из нашего каталога яхт вам поможет опытный яхтенный брокер Андрей Шестаков. На сегодняшний день компания **Shestakov Yacht Sales Inc.** имеет большое количество яхт в собственном списке продаж, а также тесно сотрудничает со всеми крупными яхтенными производителями по всему миру.

Для того чтобы купить яхту **VICTORY — BOSTON WHALER** а также проконсультироваться по любому вопросу связанному с покупкой, продажей, чартером яхт позвоните по телефону **+7(918)465-66-44**.

# ОГЛАВЛЕНИЕ

---

ОГЛАВЛЕНИЕ	2
ХАРАКТЕРИСТИКИ	3
Основная информация	3
Размеры	3
Скорость, вместимость и масса	3
Размещение	3
Корпус и палуба	3
Информация о двигателе	3
ПОДРОБНОЕ ОПИСАНИЕ	4
Description	4
Equipment	4
Remarks	5
Исключения	6
Отказ от ответственности	6
ФОТОГРАФИИ	7
КОНТАКТЫ	17
Контактная информация	17
Телефоны	17
Время работы	17
Адрес	17

# ХАРАКТЕРИСТИКИ

## Основная информация

Тип судна: Walkaround с парусом

Модельный год: 2012

Год постройки: 2012

Страна: United States

## Размеры

Длина общая: 37' 0" (11.28m)

Ширина: 11' 6" (3.51m)

## Скорость, вместимость и масса

Водоизмещение: 135000 Pounds

## Размещение

Всего кают: 1

## Корпус и палуба

Материал корпуса: Fiberglass

## Информация о двигателе

Двигатели: 3

Производитель: Mercury

Модель: Verados

# ПОДРОБНОЕ ОПИСАНИЕ

## Description

The 370 Outrage provides ample room for fighting fish or entertaining guests. The standard leaning post is well equipped for all of your boating activities with a large live well, tackle storage, refrigerator/freezer, freshwater sink and grill. An optional Summer Kitchen leaning post provides even more entertaining options by replacing the live well with an additional refrigerator and electric stove top. The ergonomically-correct center helm layout provides easy access to controls and includes a fold down helm standing platform and electrically adjustable captain's seat for maximum comfort and the integrated hardtop/windshield system that provides improved visibility and weather protection. The comfortable console forward lounge lifts to reveal lockable storage for rods, dive gear and carry on items. Down below, the well appointed cabin features a true two person berth/settee and other amenities that make it unique in its class.

## Equipment

- All Rails Welded 316-L Stainless Steel • All Hardware 316-L Stainless Steel DECK / COCKPIT
- Self bailing cockpit sole • 28" interior freeboard • Cockpit blue and white LED courtesy lighting
- Stainless steel cockpit toe rails • 10" stainless steel cleats: bow (2), spring line with hawse pipes (2), stern with hawse pipes (2), pull up cross tie cleats at transom (2), anchor locker (1)
- Bow eye • Pressurized aerated livewell (24-gallon) with lid and blue interior in aft port corner
- Stainless steel thru hull anchor roller davit • Windlass with rode and anchor • Molded fiberglass port side dive / boarding door with removable stainless steel dive ladder • Stainless steel drink holders (4 in bow, 2 in hawse pipes, 2 at helm, 4 at console lounge and 2 at leaning post)
- Stainless steel grab rails • Heavy duty rub rail • Welded stainless steel low profile interior rail
- Integral swim platform with grab rail and covered stainless steel ladder • Gunnel mounted rod holders: (4) at bow, (5) aft cockpit • Transom rod holders (5) • Under gunnel rod holders (3)
- Under gunnel storage shelf with downrigger weight holders (2 per side) • Full coaming bolsters
- Acrylic transom door with stainless steel latch CONSOLE • Center helm layout • Dash visor
- Electronics mounting surface with space for dual displays • Instrumentation and electrical switch panel with circuit breakers and illuminated text • Lockable acrylic sliding entry door
- Molded console footrests and fold-down helm standing platform • Cast stainless steel steering wheel with knob • Compass • Drink holders (2) • Stereo • Clarion AM / FM, iPod ready stereo with single CD / DVD player, 3.5" color display, JL Audio waterproof speakers, subwoofer, amplifiers (2), remote controls (2) and MP3 inputs at helm and sun lounge • 12-V receptacles (2)
- Remote ignition key switches with pushbutton start at helm SEATING • Fold-away stern bench seat • Forward console lounge with fold-down armrests, drink holders (4), backrests, removable cushion, stereo remote, auxiliary input and 12-V receptacle • Forward deck seating with drink holders (4) • Helm and companion bolster style seats (3) with fold-down armrests (center seat is electrically actuated) STORAGE • Bow anchor locker with drains • Storage under bow seating
- Insulated in door shoeboxes with pump-out: aft (4), forward (1) • Lockable console front storage:

holds 6 rods, two 5-gallon buckets (included), one 36 qt cooler (included), miscellaneous gear and optional dive tank racks • Under gunnel storage shelves and storage nets • Storage bin in console • Lifejacket storage HARDTOP / WINDSHIELD SYSTEM • Custom powder coated, integrated frame with aft support legs • Tempered glass windshield with actuated vent • Bow area hood light • Aft cockpit area hood lights (2) • LED courtesy chart light (red and white) • LED blue lighting • Ladder access to hardtop • Lifejacket storage • Lockable electronics box • Rod holders (6) • Stereo speakers (4) • Outrigger ready DELUXE LEANING POST / BAIT PREP CENTER • Custom helm and companion bolster style seats (3) with fold-down armrests (center seat electrically actuated) • Port side fold-down footrest • Helm and starboard fold-down standing platform • Bait prep area with cutting board • Tackle storage drawers • Lure bags with dedicated storage (6) • Pull out refrigerator / freezer (1.75 cubic feet) • Freshwater sink with hot and cold water • Electric grill • Pressurized aerated livewell (55-gallon) with clear lid, blue interior and red and white lights • Storage lid with tool holders, storage nets and leader holders • Tip-out trash receptacle • Storage net on aft face • Stainless steel grab rail • Drink holders (2) CABIN INTERIOR / SHOWER / HEAD • Air conditioner with windshield defogger (8000 BTU) • Convertible settee / double berth with Ultraleather upholstery • Skylight and side lights (2) • Hanging locker • Storage cabinet • 19" at screen HDTV • Drawer refrigerator (1.3 cubic feet) • Microwave • Coffeemaker • Trash receptacle • Flexiteak flooring • Interior courtesy lights (red and white) • Task lighting • 12-V receptacle, 120-V outlet • Toilet paper holder • Vanity with vessel sink and mirror • Opening portholes with screens (2) • Shower with curtain and dedicated wand / sprayer • Vacu-Flush toilet, holding tank, overboard discharge and dockside pump-out • Hinged toilet cover with cushion • Tooth brush holder MECHANICAL • 250 DTS Triple Mercury Verado FourStroke with hydraulic power steering and Shadow Mode Technology • 450-gallon aluminum fuel tank • Stainless steel propellers • LED navigation lights in hardtop • Cockpit and machinery space lighting • Battery trays (4) with remote switches and automatic charging relays • Automatic bilge pumps (750 GPH berth, 2000 GPH bilge, 2000 GPH with high water alarm) • Electric trim tabs with indicator (dual ram) • Pressurized aerated livewell (55-gallon) with clear top window and blue interior in leaning post • Pressurized aerated livewell (24-gallon) with clear top window and blue interior in aft port corner • Raw-water washdown outlet mid-ship • Transducer mount area • Electric trumpet horn • Pressurized hot and cold water system with dockside hookup and tank level indicator • Freshwater system with 60-gallon tank, sink in console, shower in console, sink at prep station, freshwater hot and cold transom, shower, hot and cold dive door shower, anchor washdown and mid-ship outlet • Dual 30-amp shore power inlets with battery charger, isolation transformers and shore power cords • Windlass with rode and anchor • Diesel generator (8 kW Fischer Panda) with 20-gallon fuel tank • Bow thruster (4 kW) with dedicated battery bank and charging system • Water heater • Cast stainless steel thru hulls • SmartCraft Vessel View display • Windshield wiper with wash system

## Remarks

**Fantastic Opportunity to own a meticulously maintained 2012 Boston Whaler 370 Outrage. This beautiful boat is equipped with a full compliment of factory installed electronics as well as upgraded features. This unique opportunity is simply OUTRAGEOUS!! This boat is**

---

**a one owner beautifully maintained, low hour vessel. Call us today! Own the Legend!**

## **Исключения**

---

При продаже яхты исключаются личные вещи владельца.

## **Отказ от ответственности**

---

Компания предоставляет описание судна или яхты добросовестно, но не может гарантировать точность этой информации, а также не ручается за техническое состояние. Покупатель должен проинструктировать своих агентов или оценщиков исследовать представленную информацию более подробно, по собственному желанию. Продажа судна или яхты, изменение цены или снятие с продажи будет происходить без предварительного уведомления.

# ФОТОГРАФИИ





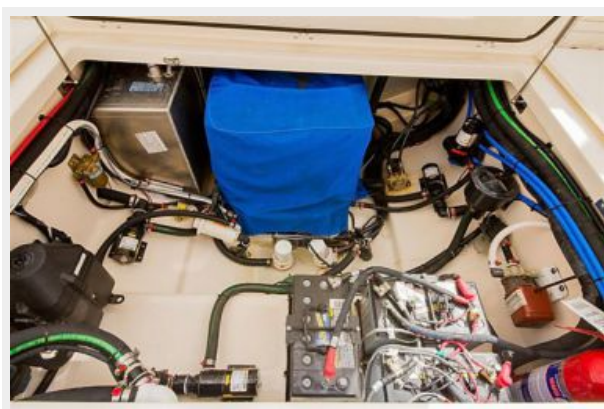




















# КОНТАКТЫ

---

Андрей Шестаков (Andrey Shestakov) – ведущий яхтенный брокер отдела продаж яхт и судов компании Shestakov Yacht Sales Inc. Официальный представитель Shestakov Yacht Sales Inc. для русскоговорящих клиентов в центральном офисе компании в Майами/Форт Лодердейл/Флорида/США.

## Контактная информация

---

Email: [andrey@shestakovyachtsales.com](mailto:andrey@shestakovyachtsales.com)

Web: [shestakovyachtsales.com](http://shestakovyachtsales.com)

## Телефоны

---

Краснодарский край: **+7(918)465-66-44**

США, Майами, Флорида: **+1(954)274-4435**

## Время работы

---

Понедельник – Суббота: **9:00 - 21:00**  
EDT

Воскресенье: **Закрето**

## Адрес

---



Harbour Towne Marina, 850 NE 3rd St,  
STE 213, Dania, FL 33004