

TAIL SPIN — VIKING



Судостроитель: VIKING

Год постройки: 2013

Модель: Катер для спортивной рыбалки

Цена: **ЦЕНА ЯХТЫ ПО ЗАПРОСУ**

Местонахождение: United States

Длина общая: 60' 0" (18.29m)

Ширина: 18' 9" (5.72m)

Мин. осадка: 4' 3" (1.30m)

Крейс. скорость: 33 Kts. (38 MPH)

Макс. скорость: 40 Kts. (46 MPH)

Купить **TAIL SPIN — VIKING** а также выбрать подходящую вам яхту из нашего каталога яхт вам поможет опытный яхтенный брокер Андрей Шестаков. На сегодняшний день компания **Shestakov Yacht Sales Inc.** имеет большое количество яхт в собственном списке продаж, а также тесно сотрудничает со всеми крупными яхтенными производителями по всему миру.

Для того чтобы купить яхту **TAIL SPIN — VIKING** а также проконсультироваться по любому вопросу связанному с покупкой, продажей, чартером яхт позвоните по телефону **+7(918)465-66-44**.

ОГЛАВЛЕНИЕ

ОГЛАВЛЕНИЕ	2
ХАРАКТЕРИСТИКИ	5
Обзор	5
Основная информация	5
Размеры	5
Скорость, вместимость и масса	5
Размещение	6
Корпус и палуба	6
Информация о двигателе	6
ПОДРОБНОЕ ОПИСАНИЕ	7
Accommodations	7
Master Stateroom, Forward Port	7
Guest Stateroom, Forward	7
Guest Stateroom, Forward Starboard	8
Guest Stateroom, Amidship Starboard	8
Salon	9
Master Head	9
Guest Head, Forward Port	10
Guest Head, Amidship Starboard	10
Galley / Laundry, Main Deck, Amidship Port	10
Helm / Electronics and Navigation	11
Deck	11
Engine and Mechanical Equipment	12
Electrical System / Equipment	13
Cockpit / Fishing Equipment	13
Exclusions	13
Salesman's Comments	13
Исключения	14

Отказ от ответственности	14
ФОТОГРАФИИ	15
Master Stateroom 1	15
Master Stateroom 2	15
Master Stateroom 3	15
Master Stateroom 4 - TV	15
Guest Stateroom, Forward 1	15
Guest Stateroom, Forward 2	15
Guest Stateroom, Forward Starboard	16
Guest Stateroom, Forward 3 - TV	16
Guest Stateroom, Amidship Starboard	16
Salon 1 - Sofa	16
Salon 3	17
Salon 2	17
Salon 4 - Dinette	17
Salon 5	17
Guest Head, Forward Port	17
Master Head	17
Guest Head, Amidship Starboard 1	18
Guest Head, Amidship Starboard 2	18
Galley 1	18
Galley 2	18
Laundry	19
Helm / Electronics & Navigation 1	19
Helm / Electronics & Navigation 2	19
Helm / Electronics & Navigation 3	19
Helm / Electronics & Navigation 5 - Port Control Box	20
Helm / Electronics & Navigation 4 - Drop Down Box	20
Helm / Electronics & Navigation 6 - Starboard Control Box	20

Deck 1 - Bridge Seating	20
Deck 2 - Bridge Seating	21
Deck 3 - Helm Seats	21
Deck 4 - Tower View Forward	21
Deck 5 - Mezzanine Seating	21
Engine & Mechanical Equipment 1 - Engine Room	21
Engine & Mechanical Equipment 2 - Port Engine	21
Engine & Mechanical Equipment 3 - Starboard Engine	22
Cockpit / Fishing Equipment 1 - Cockpit	22
Cockpit / Fishing Equipment 2 - Fighting Chair	22
Cockpit / Fishing Equipment 3 - Electronics	22
Cockpit / Fishing Equipment 4 - Monitor	22
КОНТАКТЫ	23
Контактная информация	23
Телефоны	23
Время работы	23
Адрес	23

ХАРАКТЕРИСТИКИ

Обзор

This gorgeous 60' Viking features a "Shimmering Blue" Hull, deleted pulpit and rails, Palm Beach Tuna Tower, teak Cockpit, upgraded Helm chairs and fighting chair! She is a high-gloss finished four Stateroom boat powered by CAT C-32A's (1925 hp.) with extended warranty!
OWNERS PLANS HAVE CHANGED! BRING OFFERS!!!

Основная информация

Тип судна: Катер для спортивной рыбалки

Подкатегория: Convertible

Модельный год: 2013

Год постройки: 2013

Страна: United States

Верх: 2361

Кубрик: Да

Размеры

Длина общая: 60' 0" (18.29m)

Ширина: 18' 9" (5.72m)

Мин. осадка: 4' 3" (1.30m)

Длина привального бруса: 60' 8" (18.49m)

Скорость, вместимость и масса

Крейс. скорость: 33 Kts. (38 MPH)

Макс. скорость: 40 Kts. (46 MPH)

Водоизмещение: 91300 Pounds

Вместимость воды: 300 Gallons

Объем топливного бака: 1920 Gallons

Размещение

Всего кают: 4

Спальные места: 8

Всего ком. состава: 3

Корпус и палуба

Материал корпуса: Fiberglass

Материал палубы: Teak

Комплектация корпуса: Modified V-Hull

Цвет корпуса: Shimmering Blue

Дизайнер корпуса: Wilson

Информация о двигателе

Двигатели: 2

Производитель: Caterpillar

Модель: C-32A

Тип двигателя: Inboard

Тип топлива: Diesel

ПОДРОБНОЕ ОПИСАНИЕ

Accommodations

Sleeps eight owners and guests in four Staterooms for a total of eight berths. One Master Head with shower, one Guest Head with shower and one Crew Head with shower. This four-Stateroom 60' Convertible features a queen walk-around in Master Stateroom with en-suite Head; queen walk-around in Forward Guest Stateroom with en-suite Head. The Forward Starboard Stateroom has an upper / lower bunk arrangement and the Aft Starboard Guest Stateroom has a comfortable cross-over upper / lower.

Master Stateroom, Forward Port

Beautifully decorated Master Stateroom features under bed storage, maple-lined closet, upgraded System #3 mattress, upholstered headboard and high-gloss teak cabinetry.

- Head
- Closet
- Mirror
- Shower
- Dresser
- Cabinets
- Carpeting
- Wallpaper
- Night stand
- Hanging locker
- 26" Samsung TV
- Under bed storage
- Wallpaper borders
- Entertainment center
- DVD player / SAT TV
- Walk-around queen berth
- Air conditioning / heater with controls
- Stereo system w/ CD player, speakers

Guest Stateroom, Forward

Entertain your guests comfortable with a queen berth forward, en-suite Head, ample storage and warm, tasteful fabrics! Beautiful high-gloss cabinetry.

- Head
- Shower

- Paneling
- Cabinets
- Credenza
- Carpeting
- Wallpaper
- Night stand
- Queen berth
- Hanging locker
- 19" Samsung TV
- Under bed drawer
- Under bed storage
- Entertainment center
- DVD player / SAT TV
- Air conditioning / heater with controls
- Stereo system w/ CD player, speakers

Guest Stateroom, Forward Starboard

The Forward Starboard Guest Stateroom features a comfortable upper and lower bunk arrangement with maple-lined hanging locker.

- Carpeting
- Wallpaper
- Hanging locker
- Under bed storage
- Upper & lower berth
- Air conditioning / heater with controls
- Stereo system w/ CD player, speakers

Guest Stateroom, Amidship Starboard

Aft Starboard Guest Stateroom features a very comfortable cross-over upper / lower layout.

- Closet
- Cabinets
- Carpeting
- Wallpaper
- Hanging locker
- 19" Samsung TV
- Under bed drawer
- Under bed storage
- Upper & lower berth
- DVD player / SAT TV

- Air conditioning / heater with controls
- Stereo system w/ CD player, speakers

Salon

The very inviting Salon is magnificently decorated - High-gloss teak cabinetry, Dewberry-style sofa, Burlled Maple cocktail table and dinette table tops, Hunter Douglass silhouette blinds, ice maker and upgraded surround sound system. She also features Amtico flooring at Salon entry, Octoplex Display, Electric Salon door and teak strips in headliner.

- Bar
- Table
- Blinds
- Mirror
- Dinette
- 42" TV
- Storage
- Paneling
- Cabinets
- Carpeting
- Wallpaper
- Rug runner
- Telephone jack
- Cable TV hookups
- Wallpaper borders
- Entertainment center
- DVD player / SAT TV
- Settee w/ storage below
- Air conditioning / heater with controls
- Stereo system w/ CD player, speakers
- Upgraded Bose LS-48 surround sound

Master Head

- Shower
- Wallpaper
- Exhaust fan
- Amtico flooring
- Mirrored ceiling
- Medicine cabinet
- Custom bowl sink
- Wallpaper borders
- Storage cabinet w/ mirrored door

- Magnum Opus vacu-flush, overboard, recirculating, holding tank, electric head

Guest Head, Forward Port

- Shower
- Wallpaper
- Exhaust fan
- Amtico flooring
- Mirrored ceiling
- Medicine cabinet
- Custom bowl sink
- Wallpaper borders
- Storage cabinet w/ mirrored door
- Magnum Opus overboard, recirculating, holding tank, electric head

Guest Head, Amidship Starboard

- Shower
- Wallpaper
- Exhaust fan
- Amtico flooring
- Medicine cabinet
- Wallpaper borders
- Sink w/ granite vanity top
- Magnum Opus overboard, recirculating, holding tank, electric head

Galley / Laundry, Main Deck, Amidship Port

- Sink
- Carpeting
- Water heater
- Insta hot water
- Trash compactor
- Garbage disposal
- Central vacuum system
- Rosewood amtico flooring
- Four-burner, electric stove
- Pressure fresh water system
- Microwave oven / Convection oven
- Ample slide-out storage above counter
- Clothes washer & clothes dryer (in Companionway)

- Beautiful Bellini granite counter tops w/ (2) bar stools
- (3) Sets of Sub-Zero drawer-style refrigerators & freezers

Helm / Electronics and Navigation

- I-pod Dock
- 6" Compass
- SAT weather
- D-Link router
- Furuno FA30 AIS
- Engine Room camera
- Blacked out radio boxes
- (2) Icom 604 VHF radios
- Simrad AP 2803 auto pilot
- 15" KEP display in Cockpit
- Carbon fiber wrap on panel
- (2) 3010 White under water lights
- Garmin 5208 (in drop down box)
- Furuno NAV NET 3D 72nm radar
- FLIR M324XP night vision camera
- RD 33 & Command Mic on Tower
- Airmar CM599CH Chirp transducer
- Furuno RD 33 speed & distance logs
- KVH trac vision HD7 w/ (3) receivers
- Furuno NAV NET 3D 1kW - 3kW video sounder
- (2) Furuno NAV NET 3D network GPS's / Plotters
- (3) 17" KEP monitors display network Furuno NAV NET 3D (2) GPS's / Plotters / 1kW - 3kW sounder / 12kW 72nm radar

Deck

- Locker
- Life jackets
- Transom door
- Navigation lights
- Flybridge curtain
- Anchor w/ 200' lines
- Electric drop down box
- Teak Deck & Mezzanine
- Recessed tri-colored lights
- Wash down water in Tower
- Start & stop buttons in Tower

- Costa Clear three-sided enclosure
- (3) Murray Elite Series Helm seats
- Black painted forward window mask
- Molded-in spreader lights w/ LED lights
- Fresh water, salt water, pressure Deck wash down system
- Palm Beach Towers Tuna Tower - brushed aluminum 9' gap

Engine and Mechanical Equipment

- Trim tabs
- Fire alarm
- Fume detector
- Fire extinguisher
- Racor fuel filters
- (2) Bilge blowers
- Fuel prime pumps
- Oil pressure alarm
- Oil transfer system
- Fresh water cooling
- Fuel transfer system
- Under water exhaust
- Engine synchronizers
- Raw water sea strainer
- Engine fuel shut-off valve
- Hydraulic, wheel steering
- Engine temperature alarm
- 20gallon Hot water heater
- S-Class Veems propellers
- Thermal, acoustical insulation
- Bridge, Tower engine controls
- Y-valve emergency bilge pump
- Engine Room entry gauge package
- (4) Automatic, manual bilge pumps
- DC Bow thruster w/ controls in handles
- Oil change system plumbed to Cockpit
- Delta T Engine Room ventilation system
- CO2, automatic fire suppression system
- Sea Chest w/ (2) central sea water pumps
- Awlgrippped brass thru Hulls, bilges & filters
- Port & starboard power assist steering pumps
- Twin 1925 hp. Diesel I/B 2012 CAT C-32A's w/ 470 hrs.
- Reverse cycle air conditioner w/ individual temperature controls for each Stateroom & Salon

Electrical System / Equipment

- Battery parallel switch
- 12v, 24v DC electrical system
- (2) Automatic battery chargers
- 110v, 220v AC electrical system
- Octoplex power distribution panel
- Onan 21.5kW generator w/ 500 hrs.
- (2) Cable masters (port & starboard)
- Voltage stabilizer isolation transformers
- (2) Independent 24v maintenance free battery banks

Cockpit / Fishing Equipment

- Fish box
- Bait well
- Bait freezer
- Tuna Tower
- Live fish well
- (6) Rod holders
- Eskimo ice machine
- Split lid fish box lids
- Live well in transom
- (2) 12v Hubble outlets
- Murray Elite fighting chair
- 15" KEP monitor (networked)
- Refrigerated Cockpit drink box
- Mezzanine freezer & refrigerator
- Rupp "Bigg Riggs" 43' outriggers
- (2) Ocean LED under water lights
- Cool Breeze Mezzanine air system
- Stainless steel bait tray for Mezzanine freezer
- 12-rod Rocket launcher (aft Tower rail & Tower legs)

Exclusions

Owner's personal gear and items.

Salesman's Comments

This gorgeous 60' Viking features a "Shimmering Blue" Hull, deleted pulpit and rails, Palm

Beach Tuna Tower, teak Cockpit, upgraded Helm chairs and fighting chair! She is a high-gloss finished four Stateroom boat powered by CAT C-32A's (1925 hp.) with extended warranty!
OWNERS PLANS HAVE CHANGED! BRING OFFERS!!!

Исключения

При продаже яхты исключаются личные вещи владельца.

Отказ от ответственности

Компания предоставляет описание судна или яхты добросовестно, но не может гарантировать точность этой информации, а также не ручается за техническое состояние. Покупатель должен проинструктировать своих агентов или оценщиков исследовать представленную информацию более подробно, по собственному желанию. Продажа судна или яхты, изменение цены или снятие с продажи будет происходить без предварительного уведомления.

ФОТОГРАФИИ

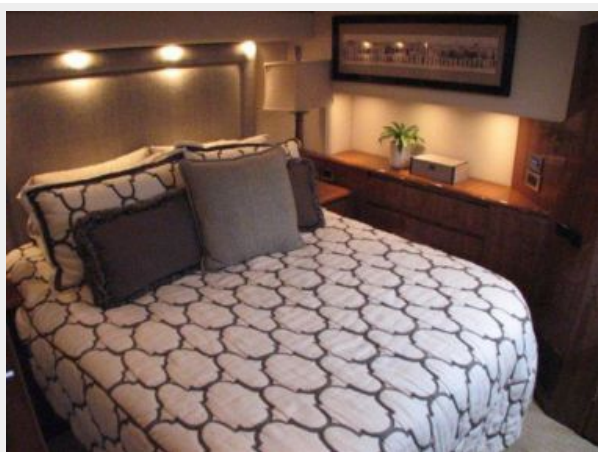
Master Stateroom 1



Master Stateroom 2



Master Stateroom 3



Master Stateroom 4 - TV



Guest Stateroom, Forward 1

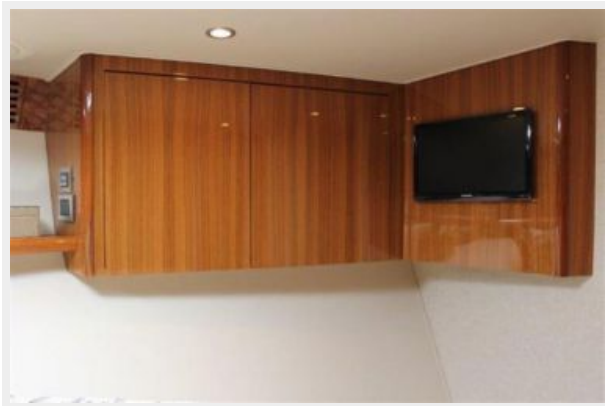


Guest Stateroom, Forward 2



Guest Stateroom, Forward Starboard

Guest Stateroom, Forward 3 - TV



Guest Stateroom, Amidship Starboard



Salon 1 - Sofa



Salon 2



Salon 3



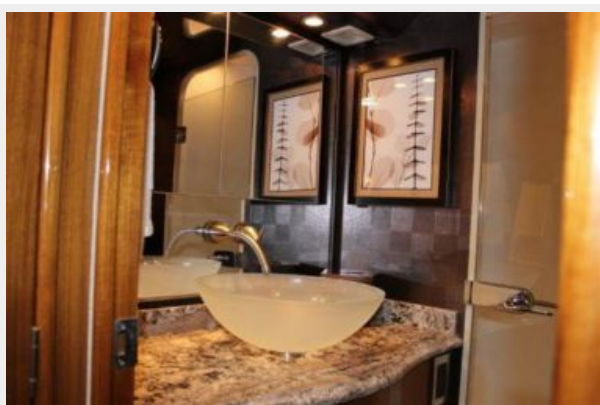
Salon 4 - Dinette



Salon 5



Master Head



Guest Head, Forward Port



Guest Head, Amidship Starboard 1



Guest Head, Amidship Starboard 2



Galley 1



Galley 2



Laundry



Helm / Electronics & Navigation 1



Helm / Electronics & Navigation 2



Helm / Electronics & Navigation 3



Helm / Electronics & Navigation 4 - Drop Down Box



Helm / Electronics & Navigation 5 - Port Control Box



Helm / Electronics & Navigation 6 - Starboard Control Box



Deck 1 - Bridge Seating



Deck 2 - Bridge Seating



Deck 3 - Helm Seats



Deck 4 - Tower View Forward



Deck 5 - Mezzanine Seating



Engine & Mechanical Equipment 1 - Engine Room



Engine & Mechanical Equipment 2 - Port Engine



Engine & Mechanical Equipment 3 - Starboard Engine



Cockpit / Fishing Equipment 1 - Cockpit



Cockpit / Fishing Equipment 2 - Fighting Chair



Cockpit / Fishing Equipment 3 - Electronics



Cockpit / Fishing Equipment 4 - Monitor



КОНТАКТЫ

Андрей Шестаков (Andrey Shestakov) – ведущий яхтенный брокер отдела продаж яхт и судов компании Shestakov Yacht Sales Inc. Официальный представитель Shestakov Yacht Sales Inc. для русскоговорящих клиентов в центральном офисе компании в Майами/Форт Лодердейл/Флорида/США.

Контактная информация

Email: andrey@shestakovyachtsales.com

Web: shestakovyachtsales.com

Телефоны

Краснодарский край: **+7(918)465-66-44**

США, Майами, Флорида: **+1(954)274-4435**

Время работы

Понедельник – Суббота: **9:00 - 21:00**
EDT

Воскресенье: **Закрето**

Адрес



Harbour Towne Marina, 850 NE 3rd St,
STE 213, Dania, FL 33004