

OCEAN 48 — OCEAN YACHTS



Builder: [Ocean Yachts](#)

Year Built: 1997

Model: Motor Yacht

Price: PRICE ON APPLICATION

Location: United States

LOA: 48' 0" (14.63m)

Beam: 15' 0" (4.57m)

Max Draft: 3' 7" (1.09m)

Cruise Speed: 22 Kts. (25 MPH)

Max Speed: 28 Kts. (32 MPH)

Our experienced yacht broker, Andrey Shestakov, will help you choose and buy a yacht that best suits your needs **Ocean 48 — Ocean Yachts** from our catalogue. Presently, at **Shestakov Yacht Sales Inc.**, we have a wide variety of yachts available on our sale's list. We also work in close contact with all the big yacht manufacturers from all over the world.

If you would like to buy a yacht **Ocean 48 — Ocean Yachts** or would like help answering any questions concerning purchasing, selling or chartering a yacht, please call **+1(954)274-4435**

TABLE OF CONTENTS

TABLE OF CONTENTS	2
SPECIFICATIONS	6
Overview	6
Basic Information	6
Dimensions	6
Speed, Capacities and Weight	7
Accommodations	7
Hull and Deck Information	7
Engine Information	7
DETAILED INFORMATION	8
Boat Highlights	8
Bridge Features	8
Aft Deck	9
Salon	9
Galley	10
Master Stateroom/Head	11
Mid-Stateroom	11
Forward Stateroom	11
Guest Head	12
Deck and Cockpit	12
Engine Room	13
Exclusions	13
Exclusions	13
Disclaimer	13
PHOTOS	15
Port Profile (2)	15
Strb Profile	15
Port Aft Quarter Profile	15

Salon	15
Master Stateroom	15
Bridge	15
Bridge (2)	16
Bridge Helm	16
Bridge Chartplotter	16
Bridge facing Aft	16
Bridge VHF/Stereo	16
Bridge facing Aft (2)	16
Aft Deck	17
Aft Deck/Bridge Steps	17
Aft Deck facing Forward	17
Aft Deck Strb side	17
Aft Deck Port side	17
Salon facing Aft	17
Salon Couch facing Aft	18
Salon Entryway	18
Salon TV	18
Salon Couch	18
Salon/Dinette	18
Dinette	18
Dinette	19
Galley	19
Galley- Dishwasher/Sink	19
Galley Under Counter Refrigerator/Freezer	19
Galley Microwave/Convection Oven	19
Master Stateroom	19
Master Stateroom facing aft	20
Master Stateroom showing TV and Vanity	20

Master Stateroom with Private Head Entrance	20
Master Stateroom Portside Dresser	20
Master Head	20
Master Head Vanity	20
Mid Stateroom	21
Mid Stateroom (2)	21
Mid Stateroom Washer/Dryer	21
Forward Stateroom	21
Guest Head	21
Guest Head Vanity	21
Dinghy on bow	22
Windless	22
Dinghy on bow	22
Forward Deckhouse and Bridge	22
Portside Deck	22
Starboard Deck	22
Cockpit	23
Cockpit	23
Transom Door	23
Port Profile	23
Port Profile	23
Strb Profile	23
Engine Room looking forward	24
Engine Room facing aft	24
Engine Room facing aft	24
Generator	24
CONTACTS	25
Contact details	25
Telephones	25

Office hours	25
Address	25

SPECIFICATIONS

Overview

Perfect for Cruising or Liveaboard

**PRICE JUST REDUCED !!
ENCOURAGED**

ASKING \$168,900 - OFFERS

This is a well cared for 1997 Ocean Yachts Cockpit Motoryacht. Powered by the optional Detroit 671 TIB engines for increased performance this yacht features excellent accommodations. Three staterooms and two full heads with separate shower stalls along with a spacious salon and fully equipped galley. This vessel has the optional upgraded ash interior which provides a more open appearance below. There is a fully enclosed air conditioned aft deck for additional lounging or living area. The enclosed bridge is also air conditioned for cruising comfort or the clear panels can be opened to allow the ocean breeze to provide it's natural cooling.

There is a rigid hull inflatable dinghy stored on the bow with a davit for easy access to launch the dinghy for exploring new anchorages or taking a quick joy ride. The cockpit makes entry from the water or dinghy easy and the cockpit also provides a platform for fishing, diving, or swimming.

ASKING \$168,900

OFFERS

ENCOURAGED !!

Basic Information

Category: Motor Yacht

Sub Category: Yacht Fisherman

Model Year: 1997

Year Built: 1997

Country: United States

Coast Guard #: 1051216

Fly Bridge: Yes

Cockpit: Yes

Dimensions

LOA: 48' 0" (14.63m)

Beam: 15' 0" (4.57m)

Max Draft: 3' 7" (1.09m)

Speed, Capacities and Weight

Cruise Speed: 22 Kts. (25 MPH)

Max Speed: 28 Kts. (32 MPH)

Displacement: 42500 Pounds

Water Capacity: 100 Gallons

Fuel Capacity: 466 Gallons

Accommodations

Total Cabins: 3

Total Heads: 2

Hull and Deck Information

Hull Material: Composite Fiberglass

Hull Configuration: Planing

Hull Color: White

Engine Information

Engines: 2

Manufacturer: Detroit Diesel / Johnson & Towers

Model: 671TIB

Engine Type: Inboard

Fuel Type: Diesel

DETAILED INFORMATION

Boat Highlights

This is a well maintained 1997 Ocean 48 Cockpit Motoryacht with the optional power upgrade to Detroit 671TIBs for increased performance capabilities. It also offers the optional interior upgrade to the lighter color ash interior. There are three staterooms all with double berths and two full heads with separate shower stalls. The spacious aft deck is enclosed with removable curtains and is air conditioned. From the aft deck there is direct access to the cockpit which has a transom door to the swim platform.

The bridge also has removable curtains and is air conditioned. It has plenty of seating and storage and has an upgraded Garmin chartplotter. Electronics also include autopilot and radar along with VHF and stereo.

There is a rigid hull inflatable dinghy stored on the bow with an electric davit for easy launching and retrieval. There are fender storage racks and an electric windless with a molded bow pulpit and railings on the forward deck.

This is an ideal layout for those that want to cruise or liveaboard. The aft cabin offers the ultimate in privacy and spaciousness without sacrificing the functionality of a cockpit.

Bridge Features

The bridge is accessed by four steps up from the aft deck. The helm seat is located forward and centerline with all instrumentation placed within the Captain's reach. There is also access to the aft deck hardtop which has a sunpad for sunbathing. Additional bridge features include:

- * Bridge hardtop with radar arch - **Optional Upgrade**
- * Full clear plastic enclosure with u-zip openings
- * Bridge Air Conditioning - **Upgrade**
- * Guest seating on port and starboard sides with storage beneath
- * Guest seating aft of helm seat
- * Complete navigational electronics
 - * Chartplotter - Garmin 5212 touchscreen - **Upgrade**
 - * Radar - Furuno
 - * VHF - ICOM M126 DSC

- * Autopilot - Robertson AP300X
- * Tridata - Autohelm
- * Digital Depth - Standard Horizon
- * Stereo - Jensen MDV6115
- * Overhead hatch in hardtop
- * Remote spotlight - Jabsco
- * Trim tabs - Bennett

Aft Deck

The full beam aft deck offers a large entertaining and living area. It has the following features:

- * Factory hardtop
- * Wing doors for direct access to port and starboard side decks
- * Direct access to cockpit
- * Full enclosure that can be raised for open air access
- * Air conditioning
- * Wet bar with sink and refrigerator with ice maker
- * Chairs and lounge furniture
- * Storage lockers
- * Direct access through door into salon
- * Overhead grab rail
- * Carpet
- * 6 Man emergency valise life raft - Coastal Commander 6 - **Upgrade**

Salon

The salon is very large and comfortable. The large tinted side window allow for plenty of natural light and the blinds can be closed for privacy or reduced lighting. Other features include:

- * Ash Interior - **Optional interior upgrade package**
- * L shaped couch on port side with storage beneath
- * Carpeting throughout the salon - **Carpet new in 2013**
- * Direct access to aft deck, master stateroom, galley and dinette
- * Movable table
- * Direct engine room access
- * Electrical panel controls on starboard side
- * VHF radio - ICOM IC M59
- * Overhead recessed lighting
- * Barrel chair located on starboard side
- * Storage cabinets located on starboard side and forward overhead in salon
- * Flat screen Samsung TV located in cabinet
- * Spacious dinette located forward starboard side of salon
- * Air conditioning
- * Bose stereo
- * Satellite TV

Galley

The galley is located on the port side, forward and on the same level as the salon. It is separated from the salon by a low profile counter which provides separation but maintains an open feel and appearance. It is located directly across from the dinette for ease of serving. The galley offers the following additional features:

- * Under counter refrigerator and freezer
- * Two burner electric cooktop with cover
- * Dishwasher - Kenmore
- * Sink with SinkErator instant hot water
- * Microwave/Convection Oven - Sharp Carousel - Located behind cabinet doors

- * Storage drawers and cabinets
- * Freshwater tank level indicator
- * Storage beneath galley floor

Master Stateroom/Head

The master stateroom is located four steps down and aft of the salon. It has a private entrance door and offers complete privacy from the rest of the vessel. Since it occupies the entire beam of the vessel there is plenty of room for the queen size bed, dresser drawers and it has a private head with separate shower stall. Other features include:

- * Ash interior - **Optional upgrade package**
- * Two large hanging lockers for clothes storage
- * Vanity with mirror and lighting
- * Flat screen TV
- * Mirrored aft bulkhead
- * Portlights with shades
- * Air conditioning
- * Private head with sink, storage cabinets, electric toilet and separate shower stall

Mid-Stateroom

The mid stateroom is located forward and down three steps from the dinette on the starboard side. It has a double bed and a door for total privacy. Other features include:

- * Ash interior - **Optional upgrade package**
- * Storage drawers and locker
- * Washer/dryer combo unit - Bendix WDS 1043M
- * Air conditioning

Forward Stateroom

The forward stateroom is located all the way forward in the bow section. It features a centerline

double bed. Additional features include:

- * Private entrance to guest head
- * Air conditioning
- * Storage cabinets on port and starboard side
- * Overhead hatch
- * Mirrored forward bulkhead
- * Overhead recessed lighting

Guest Head

The guest head is located just aft of the forward stateroom on the port side. There is access from the main companionway or directly from the forward stateroom. Additional features are:

- * Mirrored vanity
- * Electric toilet
- * Separate shower stall
- * Sink with storage below

Deck and Cockpit

The forward deck features:

- * Molded bow pulpit with anchor roller and stainless steel anchor
- * Anchor windless with remote control on bridge - Lewmar
- * Stainless fender holders on port and starboard bow rail- **Upgrade**
- * Deck mounted aluminum chocks for dinghy on bow - **Upgrade**
- * Deck mounted electric davit on bow - **Upgrade**
- * Dinghy - **Upgrade**
 - * 9.5 ft. Nautica rigid hull inflatable
 - * 15hp Yamaha four stroke outboard

* Epirb mounted to radar arch - **Upgrade**

The cockpit features:

- * Transom door with direct access to swim platform
- * Electric Cablemaster outlet for 50 amp shorepower cord
- * Transom shower with hot and cold water
- * Large step/storage box
- * Direct access to aft deck

Engine Room

Routine access to engine room is gained through a hatch in the salon floor. Features of the engine room include:

- * Detroit 671TIB, 485hp each (2) - 1900 hrs - **Upgraded optional engine package**
- * Westerbeke 10kw generator - approx. 1460 hrs
- * Mechanical engine room gauges
- * Racor primary fuel filters
- * Emergency engine driven bilge pump
- * Engine room blowers
- * 40 Amp battery charger

Exclusions

Owners' personal items

Exclusions

Owner's personal belongings.

Disclaimer

The Company offers the details of this vessel or yacht in good faith but cannot guarantee or warrant the accuracy of this information nor warrant the condition of the vessel. A buyer should instruct his representatives, agents, or his surveyors, to investigate such details as the buyer desires validated. This vessel or yacht is offered subject to prior sale, price change, or withdrawal without notice.

PHOTOS

Strb Profile



Port Profile (2)



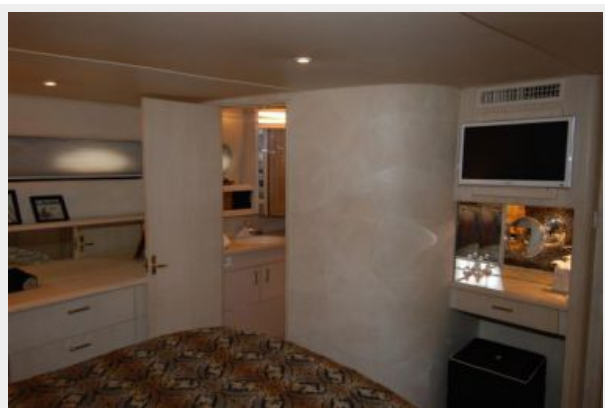
Port Aft Quarter Profile



Salon



Master Stateroom



Bridge



Bridge (2)



Bridge Helm



Bridge Chartplotter



Bridge facing Aft



Bridge facing Aft (2)



Bridge VHF/Stereo



Aft Deck



Aft Deck/Bridge Steps



Aft Deck facing Forward



Aft Deck Strb side



Aft Deck Port side



Salon facing Aft



Salon Couch facing Aft



Salon Entryway



Salon TV



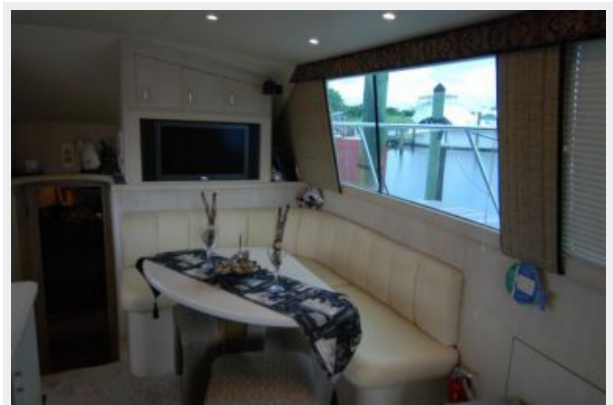
Salon Couch



Salon/Dinette



Dinette



Dinette



Galley



Galley- Dishwasher/Sink



Galley Under Counter Refrigerator/Freezer



Galley Microwave/Convection Oven



Master Stateroom



Master Stateroom facing aft



Master Stateroom showing TV and Vanity



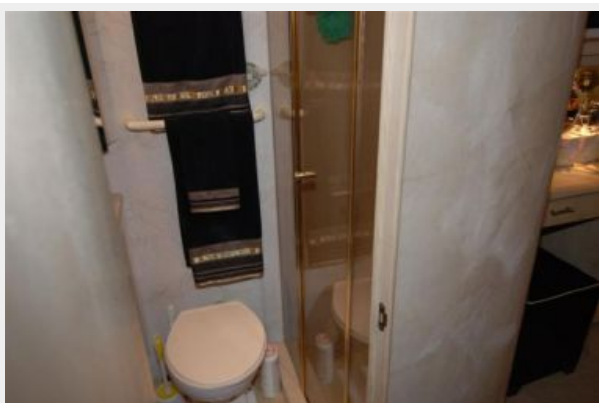
Master Stateroom Portside Dresser



Master Stateroom with Private Head Entrance



Master Head



Master Head Vanity



Mid Stateroom



Mid Stateroom (2)



Mid Stateroom Washer/Dryer



Forward Stateroom



Guest Head



Guest Head Vanity



Dinghy on bow



Windless



Dinghy on bow



Forward Deckhouse and Bridge



Portside Deck



Starboard Deck



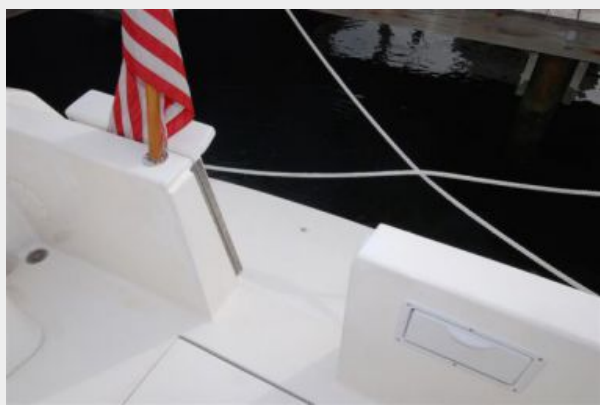
Cockpit



Cockpit



Transom Door



Port Profile



Port Profile



Strb Profile



Engine Room looking forward



Engine Room facing aft



Engine Room facing aft



Generator



CONTACTS

Andrey Shestakov, leading yacht broker of the sales department of Shestakov Yacht Sales Inc. Shestakov Yacht Sales Inc., the official representative of the Miami/Fort Lauderdale FL headquarters.

Contact details

Email: andrey@shestakovyachtsales.com

Web: shestakovyachtsales.com/en/

Telephones

USA: +1(954)274-4435

Office hours

Monday – Saturday: **9:00 - 21:00** EDT

Sunday: **closed**

Address



Harbour Towne Marina, 850 NE 3rd St,
STE 213, Dania, FL 33004