

## VICTORY 35 — VICTORY



**Builder:** VICTORY

**Year Built:** 2001

**Model:** Catamaran

**Price:** PRICE ON APPLICATION

**Location:** United States

**LOA:** 35' 0" (10.67m)

**Beam:** 16' 0" (4.88m)

**Max Draft:** 2' 10" (0.86m)

Our experienced yacht broker, Andrey Shestakov, will help you choose and buy a yacht that best suits your needs **Victory 35 — VICTORY** from our catalogue. Presently, at Shestakov Yacht Sales Inc., we have a wide variety of yachts available on our sale's list. We also work in close contact with all the big yacht manufacturers from all over the world.

If you would like to buy a yacht **Victory 35 — VICTORY** or would like help answering any questions concerning purchasing, selling or chartering a yacht, please call **+1(954)274-4435**

# TABLE OF CONTENTS

TABLE OF CONTENTS	2
SPECIFICATIONS	4
Basic Information	4
Dimensions	4
Speed, Capacities and Weight	4
Accommodations	4
Hull and Deck Information	4
Engine Information	5
DETAILED INFORMATION	6
Boat Highlights	6
Accommodations	6
Galley	7
Electronics	7
Electrical	7
Deck and Equipment	8
Sails & Rigging	8
Engine	9
Additional	9
Exclusions	9
Disclaimer	9
PHOTOS	10
Salon	10
Salon forward with TV	10
Nav Station with Electrical Panel	10
Refrigerator and Freezer	10
Salon Storage	11
Galley	11
Cabin	11

---

Head	11
Cabin	12
Head with Shower	12
Helm Station	12
Cockpit with plenty of seating	12
Cockpit	12
Starboard Side	12
Victory Layout	13
Bow	13
Victory Layout	13
CONTACTS	14
Contact details	14
Telephones	14
Office hours	14
Address	14

---

# SPECIFICATIONS

---

## Basic Information

---

**Category:** Catamaran

**Model Year:** 2001

**Year Built:** 2001

**Country:** United States

## Dimensions

---

**LOA:** 35' 0" (10.67m)

**LWL:** 34' 8" (10.57m)

**Beam:** 16' 0" (4.88m)

**Max Draft:** 2' 10" (0.86m)

**Clearance:** 49' 0" (14.94m)

## Speed, Capacities and Weight

---

**Displacement:** 9500 Pounds

**Water Capacity:** 100 Gallons

**Holding Tank:** 120 Gallons

**Fuel Capacity:** 50 Gallons

## Accommodations

---

**Total Cabins:** 3

**Total Heads:** 2

## Hull and Deck Information

---

**Hull Material:** Fiberglass

---

## Engine Information

---

**Engines:** 1

**Manufacturer:** Yanmar

**Model:** 3JH3E

**Engine Type:** Inboard

**Fuel Type:** Diesel

---

# DETAILED INFORMATION

---

## Boat Highlights

---

This Victory 35 is affordable luxury. Perfect cruising and entertaining yacht. Spacious layout, stable, shallow draft, and modest beam. The size and design of the Victory 35 is large enough for graceful living and cruising, yet it is still small enough to tuck into those shallow unique coves.

The sixteen foot beam is a special advantage for a catamaran allowing access to many marina slips and travel lifts unavailable to other catamarans with broader beams.

The Victory 35 is a cruising catamaran, designed to be fast, safe, comfortable, and fun to sail. Every detail of her lines, accommodations, deck layout, and sail plan arises from years of sailing and cruising on catamarans. Built in USA.

## Accommodations

---

Salon: L shaped seating to sit 6 people with additional two stools for total 8 seating. Entertainment 26" Panasonic TV with DVD player, Radio with 5 CD player with satellite radio. Two cabin speakers inside and 2 in aft cockpit. Flip top chart table, wall organizer for books catch. Large storage area under TV area. Wine, liquor cabinet.

Fan 4 speeds Cafimano with timer. Foot low-pressure water pump for water savings while at sea. Total salon and pontoons teak and holly single piece inlayed simulated material. Dometic blue light anti-mold system in main Air conditioning duct to salon.

Master Stateroom; Total starboard side. King/Queen bed 80" length x 68" wide. Ample storage under bed. Two reading lights along with 12V fan. Overhead hatch with 2 port openings. Deep cedar hanging locker, Locker below for shoes etc.. Two clothes drawers. Sitting area for dressing. Vanity with sink and mirror, medicine cabinet Air conditioning ducts. Easy access under vanity for sea cocks for over board macerator and generator intake. Head area Jabsco 12V electric head, deep cedar hanging closet, stand alone shower separate from head. Overhead hatch in shower area. Port opening in vanity area.

Guest Stateroom portside AFT: Queen/King bed 80" long x 68 " wide. Deep cedar hanging locker along with cabinets under locker for shoes etc.. Sitting area for dressing. Teak access door for inverter. Teak access door under bed for seacocks to engine strainer and air conditioning strainer. Overhead hatch, two port openings 12 V fan with two reading lights. Port opening in hallway to head area. Head 12V Jabsco electric head, vanity and mirror. Separate stand up shower area from head. Walk through to forward stateroom. Hanging locker, storage access on side wall to bed Single bed with reading light 12V fan. Overhead Hatch, port hatch. Access area to bow thruster charger, battery, and bow thruster.

---

## Galley

---

Double stainless steel sink with water filter, 2-burner propane stove with oven. Magic Chef microwave. Cabinets 5 above counter top, two drawers below counter along with cabinets for pot and pans. Three-shelf area above sink for dishes.

---

## Electronics

---

Ray marine C-80 With Maps

ST 4000 Auto Pilot

ST-60 Tridata

Icom 504M In Salon with Full use remote at Helm

Hailer On Deck

Cell phone repeater on mast

---

## Electrical

---

3.5 LP Phasor Marine Diesel Generator

Airconditioning

Freedom Windless Operates for cockpit

Lewmar 185 TT Bow Thruster

Electric Head

New 100 AMP Alternator with surpitine wide belt pulley system

1500-Watt Heart Inverter with control panel in salon

4 Gel cell house batteries

One starter battery

One bow thruster battery

2- 30 AMP 50' shore power cords

1 Y-30 AMP Splitter

1 Y-50 AMP to 30 AMP Y

---

Two Shore power inlets one dedicated to Air Conditioner

12 Volt and 110 Panels

4 12-Volt Fans

8 110 Outlets

## **Deck and Equipment**

---

Swim Ladder

Boarding Ladder with brackets for both port and starboard

Emergency tiller

Boarding gates both sides

Two stern pulpit seats

Double Lifelines

Rescue throw able lifeline

Custom Stainless Davits with Winch

Stainless Steel Crane for lifting outboard with storage bracket for motor

Spare prop for Sail Drive

Spare Yoke for Sail Drive

Quick Change Plate for Impeller change out

## **Sails & Rigging**

---

Mack Stack Pak Full Batten Main

Harken Roller Furling Genoa

1 Harkin two speed self tailing Winch 40.2 Electric

2 Harkin manual self-tailing #40 winches

Traveler



---

## Engine

---

Yanmar 3JH3E Diesel 40 H.P

Sail Drive by Sillette MK-2

---

## Additional

---

Walker Bay 10 Dingy with Double Dry Floor

15 H.P. 4 stroke Yamaha

Topside, Deck and Pontoons were total Alcraft 2000 in 2014

---

## Exclusions

---

Owner's personal belongings.

---

## Disclaimer

---

The Company offers the details of this vessel or yacht in good faith but cannot guarantee or warrant the accuracy of this information nor warrant the condition of the vessel. A buyer should instruct his representatives, agents, or his surveyors, to investigate such details as the buyer desires validated. This vessel or yacht is offered subject to prior sale, price change, or withdrawal without notice.

# PHOTOS

**Salon**



**Salon forward with TV**



**Nav Station with Electrical Panel**



**Refrigerator and Freezer**



**Salon Storage**



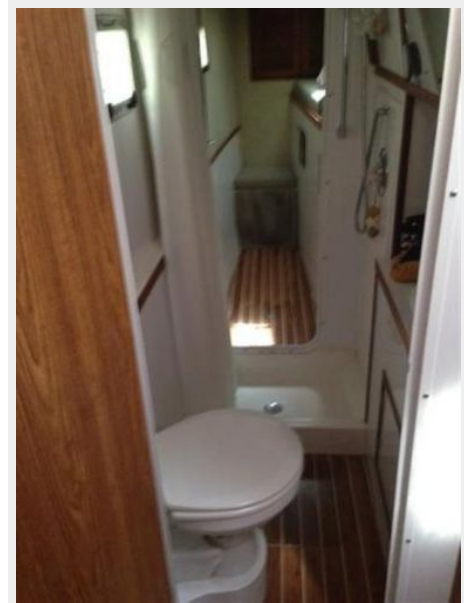
**Galley**



**Cabin**



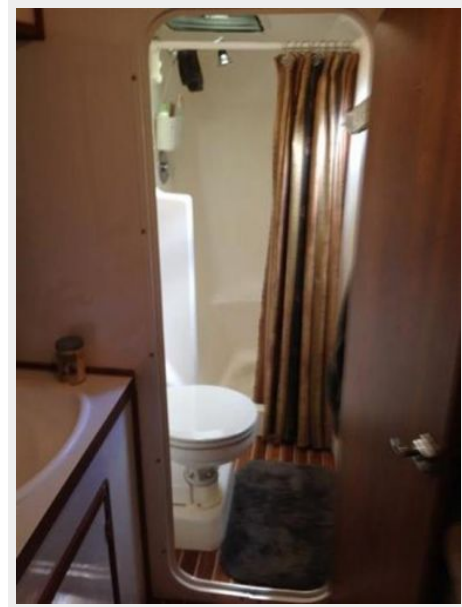
**Head**



**Cabin**



**Head with Shower**



**Helm Station**



**Cockpit with plenty of seating**



**Cockpit**



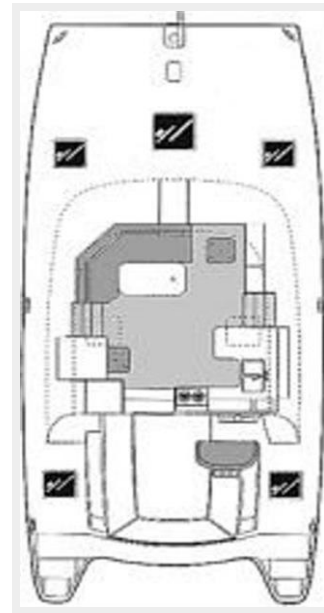
**Starboard Side**



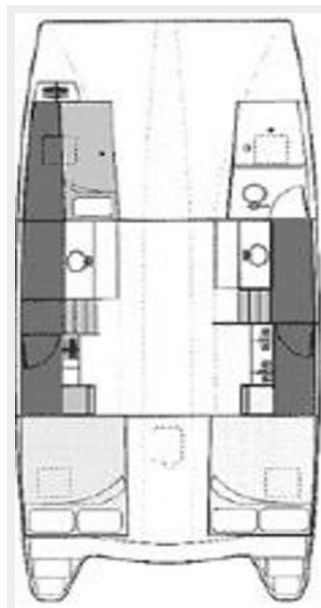
**Bow**



**Victory Layout**



**Victory Layout**



# CONTACTS

---

Andrey Shestakov, leading yacht broker of the sales department of Shestakov Yacht Sales Inc. Shestakov Yacht Sales Inc., the official representative of the Miami/Fort Lauderdale FL headquarters.

## Contact details

---

Email: [andrey@shestakovyachtsales.com](mailto:andrey@shestakovyachtsales.com)

Web: [shestakovyachtsales.com/en/](http://shestakovyachtsales.com/en/)

## Telephones

---

USA: +1(954)274-4435

## Office hours

---

Monday – Saturday: **9:00 - 21:00** EDT

Sunday: **closed**

## Address

---



Harbour Towne Marina, 850 NE 3rd St,  
STE 213, Dania, FL 33004