

ILHAS — PURSUIT



Builder: PURSUIT

Year Built: 2009

Model: Sport Fisherman

Price: PRICE ON APPLICATION

Location: United States

LOA: 37' 0" (11.28m)

Beam: 13' 0" (3.96m)

Min Draft: 3' 6" (1.07m)

Max Speed: 55 Kts. (63 MPH)

Our experienced yacht broker, Andrey Shestakov, will help you choose and buy a yacht that best suits your needs **ILHAS — PURSUIT** from our catalogue. Presently, at Shestakov Yacht Sales Inc., we have a wide variety of yachts available on our sale's list. We also work in close contact with all the big yacht manufacturers from all over the world.

If you would like to buy a yacht **ILHAS — PURSUIT** or would like help answering any questions concerning purchasing, selling or chartering a yacht, please call **+1(954)274-4435**

TABLE OF CONTENTS

TABLE OF CONTENTS	2
SPECIFICATIONS	4
Overview	4
Basic Information	4
Dimensions	4
Speed, Capacities and Weight	5
Accommodations	5
Hull and Deck Information	5
Engine Information	5
DETAILED INFORMATION	6
Hull	6
Salon	6
Galley	6
Electronics	7
Mechanical	7
Exclusions	7
Disclaimer	7
PHOTOS	8
Aft View	8
Aft View	8
Starboard View	8
Triple Yamaha 4 Stroke	8
Helm	9
Electronics	9
Electronics	9
Electronics	9
Electronics	10
Cabin/Dinette	10

Cabin/TV	10
Galley	10
Galley	11
Forward Bunk	11
Head	11
Head	12
CONTACTS	13
Contact details	13
Telephones	13
Office hours	13
Address	13

SPECIFICATIONS

Overview

NEW FUEL TANKS INSTALLED AT THE PURSUIT FACTORY 2014! NEW POWERHEAD ON PORT ENGINE!

The OS 375 is the largest Pursuit outboard model we've ever built. Measuring just under 40 feet in length, our newest flagship has all the comforts of home — plus a 360-degree water view! The 375 combines the performance, seaworthiness and fishability of the world's top inboard battle wagons with the luxuriousness of the most comfortable cruisers. Its sleek express-style design features an enormous 13-foot beam which results in an expansive cockpit and roomy accommodations below decks. Every inch of this boat exudes yacht quality fit and finish, from its beefy grab rails, to its bow thruster, to its Corian®-countered gourmet kitchen — complete with a two-burner glass stove top, microwave, 7.5 cubic-foot stainless steel refrigerator/freezer and stainless steel polished sink with hot and cold pressurized water. Also below decks, light-colored interior accents and strategically located ports make the interior spacious and inviting. Opposite the galley, the curved dinette seats you and your guests for a comfortable dinner at the custom teak table with a telescoping pedestal. If you've been yearning for yacht-like performance and features, without the constant maintenance and expense, the 375 OS is the answer to your dreams.

Basic Information

Category: Sport Fisherman

Sub Category: Express

Model Year: 2009

Year Built: 2009

Country: United States

Vessel Top: Hardtop

Dimensions

LOA: 37' 0" (11.28m)

Beam: 13' 0" (3.96m)

Min Draft: 3' 6" (1.07m)

MFG Length: 37' 0" (11.28m)

Speed, Capacities and Weight

Max Speed: 55 Kts. (63 MPH)

Displacement: 18985 Pounds

Water Capacity: 65 Gallons

Holding Tank: 18 Gallons

Fuel Capacity: 370 Gallons

Accommodations

Total Cabins: 1

Total Heads: 1

Hull and Deck Information

Hull Material: Fiberglass

Deck Material: Fiberglass

Engine Information

Engines: 3

Manufacturer: Yamaha

Model: 4 Stroke

Engine Type: Outboard

Fuel Type: Gas

DETAILED INFORMATION

Hull

- NEW FUEL TANKS INSTALLED AT THE PURSUIT FACTORY 2014
- Infused fiberglass windshield with tempered safety glass and forward electrically actuated ventilating center window.
- One-piece welded, 316L stainless steel bow rail
- High density PVC rubrail w/S.S. insert
- Reinforced infused FRP one-piece stringer grid w/bilge water management
- Molded-in fiberglass bow pulpit with 316L S.S. bow roller and 10" mooring cleat, skid plate & chain binder
- Anchor windlass w/switch at helm and remote switch at anchor locker w/ overboard drain and fresh washdown
- Two (2) 17" x 17" forward hatches with adjuster and framed slide screens
- Acrylic transom door w/316L S.S. hardware
- Six (6) 316L stainless steel 10" mooring cleats
- Molded-in fiberglass bow pulpit with 316L S.S. bow roller and 10" mooring cleat, skid plate & chain binder
- Four (4) opening stainless steel port lights with screens
- Port, center & starboard pantographic windshield wipers w/fresh water washer system
- Full cockpit breathable coaming bolsters w/dry-fast foam Custom non-skid deck, cockpit surface and gunwale boards.
- Self-draining cockpit with scupper drains

Salon

- Solid Teak and Maple floor
- Fiberglass interior headliner
- Forward port-side hanging locker, cedar lined
- Dinette base accent lighting & v-berth step lighting
- Clarion® AM/FM/CD player w/JL audio speakers (6), subwoofer & JL audio amplifier
- 110V outlet, GFI protected
- Teak table with inlay and adjustable aluminum pedestal; dinette seating area.
- Dinette storage cabinet w/sliding doors
- 19" flat screen TV (12-volt) w/DVD player

Galley

- Complete Corian® galley top with storage cabinets overhead and drawers under sink area
- Polished stainless sink w/pressurized hot/cold mixing valve faucet

- Covered trash storage bin w/removable container
- Kenyon 2-burner glass cooktop
- 110-volt Microwave
- 7.5 cu. ft. refrigerator / freezer
- Galley storage cabinets
- Storage cabinet for plates, cups and utensils

Electronics

- Raymarine E120W - Touch screen includes: 48" Super HD 4kw Open Array Radar 125 GPS Sensor DSM 300 Digital Sounder Airmar B164 Bronze 1000 watt Transducer FLIR NAV II Night Vision w/pan & tilt Simrad NSE12 - Includes: GS15 GPS Sensor Airmar DT-800 235 kw transducer/depth/speed Simrad AP28 Auto Pilot Raymarine 240 VHF Trackvision MI Satellite TV Antenna hooked to 3 cabin TV's

Mechanical

New powerhead on port engine (approx. 4 hrs.)

Exclusions

Owner's personal belongings.

Disclaimer

The Company offers the details of this vessel or yacht in good faith but cannot guarantee or warrant the accuracy of this information nor warrant the condition of the vessel. A buyer should instruct his representatives, agents, or his surveyors, to investigate such details as the buyer desires validated. This vessel or yacht is offered subject to prior sale, price change, or withdrawal without notice.

PHOTOS

Aft View



Aft View



Starboard View



Triple Yamaha 4 Stroke



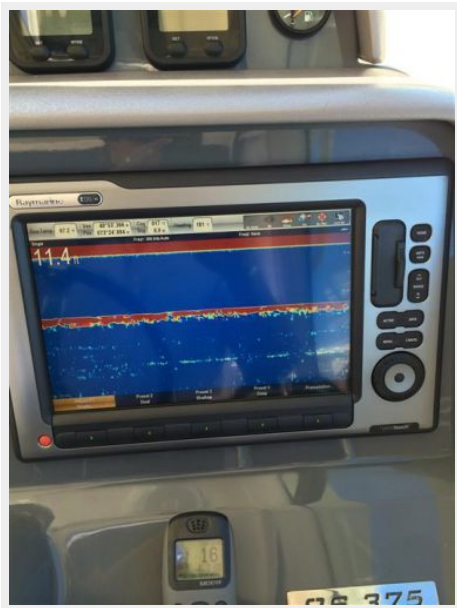
Helm



Electronics



Electronics



Electronics



Electronics



Cabin/Dinette



Cabin/TV



Galley



Galley



Forward Bunk



Head



Head



CONTACTS

Andrey Shestakov, leading yacht broker of the sales department of Shestakov Yacht Sales Inc. Shestakov Yacht Sales Inc., the official representative of the Miami/Fort Lauderdale FL headquarters.

Contact details

Email: andrey@shestakovyachtsales.com

Web: shestakovyachtsales.com/en/

Telephones

USA: +1(954)274-4435

Office hours

Monday – Saturday: **9:00 - 21:00** EDT

Sunday: **closed**

Address



Harbour Towne Marina, 850 NE 3rd St,
STE 213, Dania, FL 33004