

49FT 1982 GRAND BANKS 49 CLASSIC — GRAND BANKS



Builder: GRAND BANKS

Year Built: 1982

Model: Trawler

Price: PRICE ON APPLICATION

Location: United States

LOA: 49' 0" (14.94m)

Beam: 15' 11" (4.85m)

Cruise Speed: 10 Kts. (12 MPH)

Max Speed: 11 Kts. (13 MPH)

Our experienced yacht broker, Andrey Shestakov, will help you choose and buy a yacht that best suits your needs 49ft 1982 Grand Banks 49 Classic — GRAND BANKS from our catalogue. Presently, at Shestakov Yacht Sales Inc., we have a wide variety of yachts available on our sale's list. We also work in close contact with all the big yacht manufacturers from all over the world.

If you would like to buy a yacht 49ft 1982 Grand Banks 49 Classic — GRAND BANKS or would like help answering any questions concerning purchasing, selling or chartering a yacht, please call +1(954)274-4435

TABLE OF CONTENTS

TABLE OF CONTENTS	2
SPECIFICATIONS	3
Basic Information	3
Dimensions	3
Speed, Capacities and Weight	3
Accommodations	3
Hull and Deck Information	3
Engine Information	4
DETAILED INFORMATION	5
Dimensions	5
Mechanical Systems	5
Saloon/Galley/Lower Control Station	5
Accommodations	5
ADDITIONAL EQUIPMENT	6
Exterior	6
Exclusions	6
Disclaimer	6
PHOTOS	7
CONTACTS	19
Contact details	19
Telephones	19
Office hours	19
Address	19

SPECIFICATIONS

Basic Information

Category: Trawler

Sub Category: Aft Cabin

Model Year: 1982

Year Built: 1982

Country: United States

Dimensions

LOA: 49' 0" (14.94m)

Beam: 15' 11" (4.85m)

Speed, Capacities and Weight

Cruise Speed: 10 Kts. (12 MPH)

Max Speed: 11 Kts. (13 MPH)

Fuel Capacity: 716 Gallons

Accommodations

Total Cabins: 2

Total Berths: 2

Total Heads: 2

Hull and Deck Information

Hull Material: Fiberglass

Engine Information

Engines: 2

Manufacturer: Caterpillar

Model: 3208

Engine Type: Inboard

Fuel Type: Diesel

DETAILED INFORMATION

Dimensions

LOA: 51 feet

Beam: 15.42 feet

Cruising Speed: 10 knots

Max Speed: 11 knots

Fuel: 716 gallon

Mechanical Systems

The machinery space on this yacht has over 6' of headroom and is thoughtfully laid out. Walk in access is located in the forward accommodations, drop in access is through a hatch in the saloon.

Two Caterpillar 3208T, 300hp engines Twin Disc 2.99:1 ratio gear Racor fuel filters Stainless steel fuel tanks (new in 2006) 33 x 26 3-bladed propellers Naiad stabilizers

Saloon/Galley/Lower Control Station

The main living space on this clean 49 Classic is comfortable and spacious. Large, opening windows encompass the room allowing for maximum light and ventilation. There is plenty of head room throughout the boat, her current owner stands 6' 6" tall! The galley, located on the port side forward, is equipped with custom cabinetry, cold-plate refrigeration and a Princess three burner electric stove. Across to starboard is the lower control station, just aft of that the main saloon with an L-shaped settee, teak Yachtsman type drop leaf table and a dry bar.

Accommodations

Master Stateroom

The master stateroom is on the lower level, aft. The berth is Queen-sized, walk-around with a Tempur-pedic® mattress. There is more than ample headroom and plenty of light and ventilation from the large, opening windows. The en-suite head is fitted with a vanity sink and bath tub/shower.

Guest Staterooms

There are two guest staterooms on the lower level forward; a V-berth in the forward cabin and twins in the starboard cabin. The guest head is to port and it fitted with a vanity sink, linen locker, medicine cabinet and a stall shower.

Walk in access to the engine room is also on this level.

ADDITIONAL EQUIPMENT

Electrical

15 kW Onan generator 7.7 kW Westerbeke generator Four 8D AGM ship's service batteries (2009) Two Sentry battery chargers Two 50 amp shore power inlets Electronics

Raytheon radar Robertson autopilot GPS Depth VHF radios Additional Equipment

Air Conditioning Dinghy Davit Windlass Swim platform with ladder Custom canvas Emergency bilge pump in engine room with access from lower helm

Exterior

This yacht has spent all of her off seasons in air-conditioned, covered storage. It is noteworthy that her gelcoat is in remarkably good condition.

The flybridge, with canvas bimini top, venturi windshield and full enclosure, provides an unobstructed view towards the bow and the stern. There is plenty of seating making this a favorite spot for running the boat and entertaining.

The 11' Avon dinghy and an electric davit are located on the boat deck just aft of the flybridge.

Exclusions

Owner's personal belongings.

Disclaimer

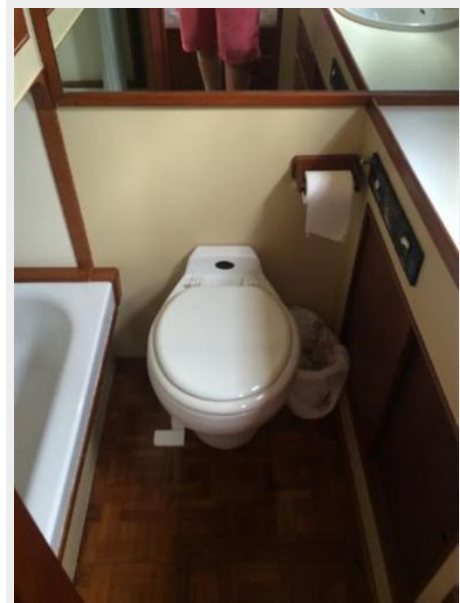
The Company offers the details of this vessel or yacht in good faith but cannot guarantee or warrant the accuracy of this information nor warrant the condition of the vessel. A buyer should instruct his representatives, agents, or his surveyors, to investigate such details as the buyer desires validated. This vessel or yacht is offered subject to prior sale, price change, or withdrawal without notice.

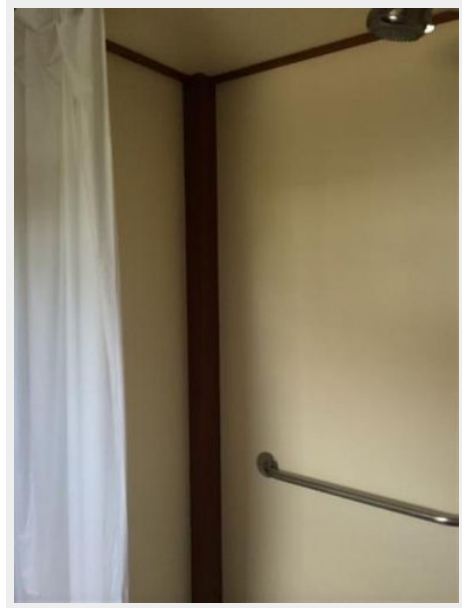
PHOTOS



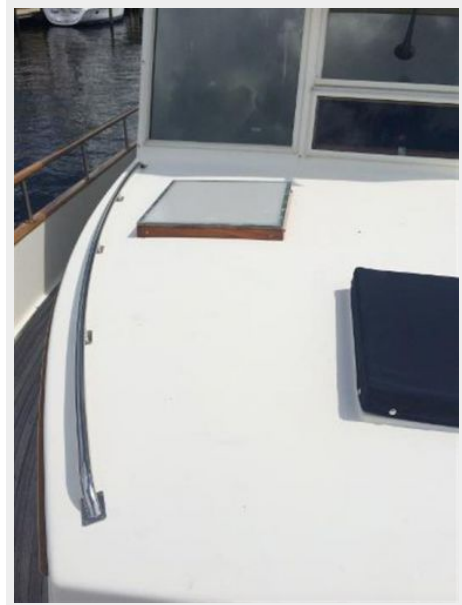








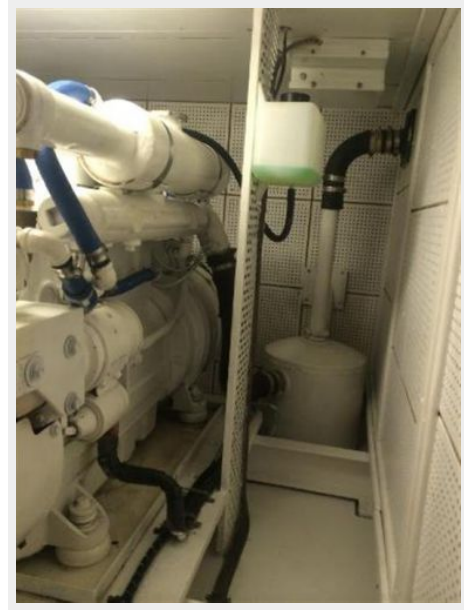














CONTACTS

Andrey Shestakov, leading yacht broker of the sales department of Shestakov Yacht Sales Inc. Shestakov Yacht Sales Inc., the official representative of the Miami/Fort Lauderdale FL headquarters.

Contact details

Email: andrey@shestakovyachtsales.com

Web: shestakovyachtsales.com/en/

Telephones

USA: +1(954)274-4435

Office hours

Monday – Saturday: **9:00 - 21:00** EDT

Sunday: **closed**

Address



Harbour Towne Marina, 850 NE 3rd St,
STE 213, Dania, FL 33004