

RUNAWAY — CABO



Builder: CABO

Year Built: 1996

Model: Sport Fisherman

Price: PRICE ON APPLICATION

Location: United States

LOA: 35' 0" (10.67m)

Beam: 13' 0" (3.96m)

Max Draft: 3' 0" (0.91m)

Cruise Speed: 25 Kts. (29 MPH)

Our experienced yacht broker, Andrey Shestakov, will help you choose and buy a yacht that best suits your needs **Runaway — CABO** from our catalogue. Presently, at Shestakov Yacht Sales Inc., we have a wide variety of yachts available on our sale's list. We also work in close contact with all the big yacht manufacturers from all over the world.

If you would like to buy a yacht **Runaway — CABO** or would like help answering any questions concerning purchasing, selling or chartering a yacht, please call **+1(954)274-4435**

TABLE OF CONTENTS

TABLE OF CONTENTS	2
SPECIFICATIONS	4
Overview	4
Basic Information	4
Dimensions	4
Speed, Capacities and Weight	4
Accommodations	5
Hull and Deck Information	5
Engine Information	5
DETAILED INFORMATION	6
Aft Cabin	6
Forward Cabin	6
Galley	6
Helm	6
Helm area	6
Cockpit	7
Engine Room	7
Exclusions	7
Disclaimer	7
PHOTOS	8
Forward cabin	8
Galley	8
Helm	8
Seating	8
Dinette	9
Galley	9
Entertainment center	9
Seating	9

Circuit board	9
Teak flooring	9
Head	10
Cabin entrance	10
Helm	10
Electronics	10
Helm area	11
Seating	11
Tackle center	11
Bait prep station	11
Bait prep station	11
Cockpit	11
Engine room	12
Starboard engine	12
Port engine	12
Profile	12
CONTACTS	13
Contact details	13
Telephones	13
Office hours	13
Address	13

SPECIFICATIONS

Overview

Great opportunity on a fully equipped, well maintained 1996 Cabo 35' Express. This 35 express features a full tower, which makes a great platform for spotting big game fish. The expansive cockpit features two large in deck fish boxes and a bait well, along with a convenient bait prep station with a fresh water sink located just aft of the settee. The well thought out helm area features an optional companion chair across from the helm seat and a comfortable settee containing storage underneath the cushions.

Moving forward into the cabin, which is lightly used and shows almost no signs of age, you will find teak and holly sole floors. The cabin features a head with freshwater shower and sink. Forward of the head in the galley area there is ample storage and countertop space. A convertible dinette area can easily be transformed into a berth. Cabo yachts are known for their superior engineering and rugged construction. Call today to come see this versatile fishing machine!

Basic Information

Category: Sport Fisherman

Model Year: 1996

Year Built: 1996

Country: United States

Dimensions

LOA: 35' 0" (10.67m)

LWL: 34' 6" (10.52m)

Beam: 13' 0" (3.96m)

Max Draft: 3' 0" (0.91m)

Speed, Capacities and Weight

Cruise Speed: 25 Kts. (29 MPH)

Water Capacity: 100 Gallons

Holding Tank: 16 Gallons

Fuel Capacity: 400 Gallons

Accommodations

Total Cabins: 1

Sleeps: 2

Total Heads: 1

Hull and Deck Information

Hull Material: Fiberglass

Engine Information

Manufacturer: Caterpillar

Model: CAT 3208

DETAILED INFORMATION

Aft Cabin

- Head with shower and sink
- Circuit panel
- L shaped couch

Forward Cabin

- V shaped settee
- Dinette/berth
- Over settee storage
- Television
- Under TV storage

Galley

- Mid size refrigerator
- Fresh water sink
- Microwave
- 2 burner stove

Helm

- Northstar chart plotter
- Furuno fish finder
- Furuno radar
- Raymarine autopilot

Helm area

- Tackle center
- Settee
- Storage under settee
- Companion seat
- Helm seat
- Driving station
- Refrigerator

- Overhead rod storage

Cockpit

- Livewell
- Under gunnel rod storage
- Two in deck fish boxes
- Bait prep station
- Fresh water sink

Engine Room

- 2 x 435hp CAT 3208 engines
- 5 KW generator
- Battery switches

Exclusions

Owner's personal belongings.

Disclaimer

The Company offers the details of this vessel or yacht in good faith but cannot guarantee or warrant the accuracy of this information nor warrant the condition of the vessel. A buyer should instruct his representatives, agents, or his surveyors, to investigate such details as the buyer desires validated. This vessel or yacht is offered subject to prior sale, price change, or withdrawal without notice.

PHOTOS

Forward cabin



Galley



Helm



Seating



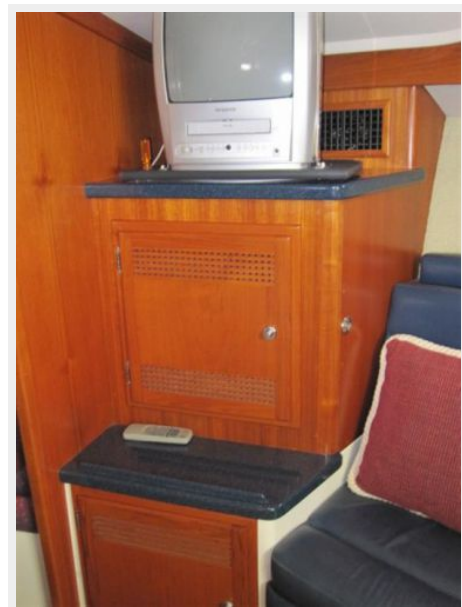
Dinette



Galley



Entertainment center



Seating



Circuit board



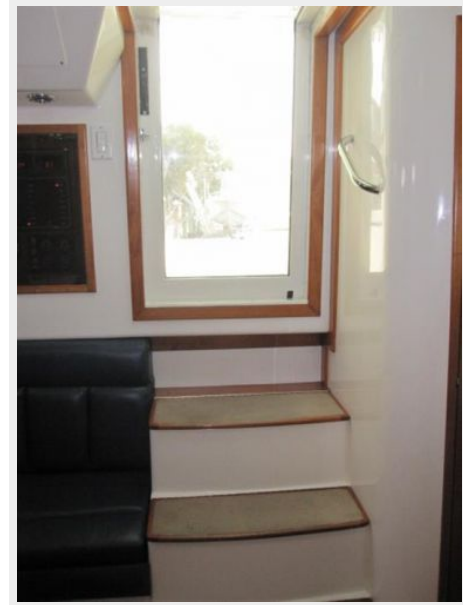
Teak flooring



Head



Cabin entrance



Helm



Electronics



Helm area



Seating



Tackle center



Bait prep station



Bait prep station



Cockpit



Engine room



Starboard engine



Port engine



Profile



CONTACTS

Andrey Shestakov, leading yacht broker of the sales department of Shestakov Yacht Sales Inc. Shestakov Yacht Sales Inc., the official representative of the Miami/Fort Lauderdale FL headquarters.

Contact details

Email: andrey@shestakovyachtsales.com

Web: shestakovyachtsales.com/en/

Telephones

USA: +1(954)274-4435

Office hours

Monday – Saturday: **9:00 - 21:00** EDT

Sunday: **closed**

Address



Harbour Towne Marina, 850 NE 3rd St,
STE 213, Dania, FL 33004