

## PUH-SEA-CAT — CARVER



**Builder:** CARVER

**Year Built:** 2000

**Model:** Motor Yacht

**Price:** PRICE ON APPLICATION

**Location:** United States

**LOA:** 50' 0" (15.24m)

**Beam:** 15' 4" (4.67m)

**Min Draft:** 4' 6" (1.37m)

**Cruise Speed:** 18 Kts. (21 MPH)

**Max Speed:** 24 Kts. (28 MPH)

Our experienced yacht broker, Andrey Shestakov, will help you choose and buy a yacht that best suits your needs **PUH-SEA-CAT — CARVER** from our catalogue. Presently, at Shestakov Yacht Sales Inc., we have a wide variety of yachts available on our sale's list. We also work in close contact with all the big yacht manufacturers from all over the world.

If you would like to buy a yacht **PUH-SEA-CAT — CARVER** or would like help answering any questions concerning purchasing, selling or chartering a yacht, please call **+1(954)274-4435**

# TABLE OF CONTENTS

TABLE OF CONTENTS	2
SPECIFICATIONS	3
Overview	3
Basic Information	4
Dimensions	4
Speed, Capacities and Weight	5
Accommodations	5
Hull and Deck Information	5
Engine Information	5
DETAILED INFORMATION	6
Galley	6
Deck and Exterior	6
Electronics	8
Additional Equipment	9
Electrical Equipment	9
Engines and Machinery	9
Disclaimer	10
Exclusions	10
Disclaimer	10
PHOTOS	11
CONTACTS	20
Contact details	20
Telephones	20
Office hours	20
Address	20

---

# SPECIFICATIONS

---

## Overview

---

**NOTE: All photos are freshly taken week of 9/15/2014 with the exception of a couple of owner photos on mooring in Bahamas from May/June 2012 "PUH-SEA-CAT'S interior is "Cavernous" and features the "Rare" Light maple interior joinerwork and cabinetry, designer hardware and fixtures, and black solid Corian surface countertops that provide stunning detail to the main cabin. Guests standing in the fully equipped, casual sunken galley, or seated in the salon, can enjoy a perfect line of sight outdoors through the 506's two-tiered window system. The 506 has three full staterooms, each with a private head for added privacy and luxury.**

- **1.) The master stateroom aft features incredible amounts of storage, a queen size, innerspring island berth, and a private head with separate water closet and the master stateroom head also features a sunken Bathtub . There is also a Washer and a Dryer (separate units) located in the Master stateroom.**
- **2.) Forward, the guest stateroom offers another queen-size island berth, innerspring mattress, and a large private head.**
- **3.) To port, a third stateroom provides a full size locker, a private head, and a split-berth arrangement. (NOTE: This stateroom has been converted to an onboard pantry for extended cruising/liveaboard but can be easily converted back to original configuration) All three heads are electric; a sunken tub with shower is featured in the aft head and a stand up shower enclosure is forward; plenty of storage.**

### NOTE:

- **Sunscreen/Sunshades for ALL Exterior Windows including Flybridge "Skyroof"**
- **All carpet was replaced / upgraded in 2010**
  
- **Port side stateroom has hardwood flooring**

**This Boat will Appeal to the Serious Cruising/Live Aboard Couple (See Below)**

**The ultimate in spacious accommodations, comfort and livability, the 506 will easily become your home away from home. What's really impressive about this yacht is its sheer**

volume. By virtue of its raised, nearly flush-deck walk- arounds, living space is expanded to the full width of the beam. This gives the 506 a wider, roomier-than-expected interior which features a "great room" that encompasses the salon, galley and dining area. A free-standing dining table and chairs give you extra flexibility. And the intriguing two-tiered elliptical window design offers unparalleled visibility whether you're seated or standing - plus, the streamlined windows add to the bold sweptback exterior styling. Because of its incredible space, the 506 offers three main levels for entertaining - the flybridge, aft deck and cabin. And the flybridge and aft deck are fully air-conditioned and enclosed. The ultimate in spacious accommodations, comfort and livability, the 506 will easily become your home away from home. What's really impressive about this yacht is its sheer volume. By virtue of its raised, nearly flush-deck walk- arounds, living space is expanded to the full width of the beam. This gives the 506 a wider, roomier-than-expected interior which features a "great room" that encompasses the salon, galley and dining area. A free-standing dining table and chairs give you extra flexibility. And the intriguing two-tiered elliptical window design offers unparalleled visibility whether you're seated or standing - plus, the streamlined windows add to the bold sweptback exterior styling. The port side guest stateroom has been converted to a liveaboard pantry for extended cruising but can be very easily converted back to original configuration

Onboard refrigeration works off inverter when underway/ No Need to run generator

## Basic Information

---

**Category:** Motor Yacht

**Sub Category:** Tri-Cabin

**Model Year:** 2000

**Year Built:** 2000

**Country:** United States

**Vessel Top:** Enclosed Pilothouse

## Dimensions

---

**LOA:** 50' 0" (15.24m)

**Beam:** 15' 4" (4.67m)

**Min Draft:** 4' 6" (1.37m)

**Clearance:** 20' 11" (6.38m)

**MFG Length:** 51' 7" (15.72m)

---

## Speed, Capacities and Weight

---

**Cruise Speed:** 18 Kts. (21 MPH)

**Max Speed:** 24 Kts. (28 MPH)

**Displacement:** 49800 Pounds

**Water Capacity:** 158 Gallons

**Holding Tank:** 95 Gallons

**Fuel Capacity:** 510 Gallons

---

## Accommodations

---

**Total Cabins:** 3

**Total Heads:** 3

---

## Hull and Deck Information

---

**Hull Material:** Fiberglass

**Deck Material:** Fiberglass

**Hull Configuration:** Modified V-Hull

**Hull Color:** White

---

## Engine Information

---

**Engines:** 2

**Manufacturer:** Volvo

**Model:** TAMD 74 EDC

**Engine Type:** Inboard

**Fuel Type:** Diesel

---

## DETAILED INFORMATION

---

### Galley

---

- **Twin basin FPR sink**
- **Black Corian counter tops**
- **Whirlpool (110V) refrigerator/freezer(Recent)/Runs off inverter while underway/No need to run generator**
- **Kitchenaid 110v convection/microwave oven**
- **Upgraded Induction Stove Top (Keeps stove top from getting hot to touch) Cooktop is 4 burner 240 volt induction unit providing instant heating and cool surfaces**
- **Hardwood floor**
- **Keurig/Mr. Coffee 110v coffee maker**
- **20 gallon Raritan water heater**

### Deck and Exterior

---

#### Deck

- **Bow thruster**
- **Maxwell Windlass**
- **CQR Anchor & rode**
- **Anchor chain locker**
- **Anchor roller**
- **Remote spotlight**
- **Foredeck sunpad**
- **SS Bow and Safety rails**
- **Bridge hardtop w/solid side enclosure**
- **Bridge/ deck air conditioning**
- **Adjustable, triple-wide helm seat**
- **Flybridge and aft deck have complete set of custom sun shade screens.**
- **Stereo speakers**
- **L-shaped lounge seats 6**
- **Double-wide stbd lounge w/storage**
- **3 storage lockers**
- **Bridge stereo**
- **Wet bar**
- **Refrigerator**
- **Icemaker**
- **118 sq ft. Aft deck**

- **Stairway to bridge**
- **Electronics arch**
- **Aft deck hardtop**
- **Solid side enclosure**
- **Wing doors**
- **Area Accent Rug Aftdeck**
- **Stereo speakers**
- **Full, acrylic transom door**
- **61 sqft boarding platform**
- **Hot/cold handshower**
- **Transom storage locker**
- **Integral stairs to aft deck**
- **Telescoping boarding ladder**
- **Side stanchions with lifelines**
- **Coast Guard approved safety package**
- **Fresh water wash down system**
- **Windshield washers and wipers**
- **Wide raised side deck walk arounds**
- **Fiberglass deck**
- **Search lights**
- **Swim platform**
- **Dockside lights**
- **Covers and curtains**
- **Navigations lights**
- **Enclosed air conditioned bridge with wet bar including sink, refrigerator and ice maker,**
- **Glendinning 50 amp cablemaster.**
- **Hard aft with glass wing doors**
- **Sun pads on bow**
- **Electric glass sunroof on bridge**
- **Coast Guard approved safety package**
- **Docking lights**
- **Fenders and lines**
- **Life jackets**
- **Navigation lights**
- **Remote search lights**
- **Swim platform**
- **RIB HypalonWest Marine 4 personHard Bottom Inflatable (model RIB 350HYP)/ 1325 Lb capacity**
- **15 HP Yamaha 2 cycle (New 2010) with approximately 10 hours use**
- **Weaver Transom Davits with stand Off arms to hold Upright and off transom (Easily launched/stored by one person)**

## Exterior Details

- **Hot and Cold Transom Handshower**
- **Bridge Wet Bar**
- **Hardtop**
- **Full Enclosure Solid w/Vent Winds.**
- **Transom Storage Box**
- **Fresh Water Washdown - fore & aft**
- **Bow Thruster**
- **Spot Light**
- **Windlass, Anchor & Chain**
- **Foredeck Fender Basket Holders**
- **Foredeck Sunpads**

## Electronics

---

- **Lowrance 24 Mile Broadband RADAR**
- **(2) Lowrance HDS 10 GPS/Chartplotters with integrated Radar, Depth Finder, Fish Finder and SIRIUS weather and Radio**
- **Raytheon RayPilot 650 Autopilot**
- **Lowrance LVR 880 VHF Radio (Bridge)**
- **Fusion Receiver with Sirius Weather**
- **Raytheon ST 60 Depth Finder**
- **ITT remote spotlight**
- **Glendinning cablemaster**
- **Glendinning synchronizers**
- **Power commander electronic shifters**
- **Jensen Bridge stereo CD**
- **Danforth compass**
- **TVs are satellite connected using KVH M3 continuous positioning antenna. You can watch TV while underway! Currently has 2 Dish HD receivers installed. System will work with Direct TV as well as Mexico and South American system if you change the receivers.**
- **Recent Samsung Flat Screen TV's Salon and 2 staterooms**
- **Ray 220 VHF Radio/Hailer/Intercom in Salon**



---

## Additional Equipment

---

- **QL Bow Thruster**
- **ITT Remote Spotlight (Forward Bowrail Mounted)**
- **Volvo Electronic Controls**
- **Windshield Wipers/Defoggers/Washers**
- **Bridge Entertainment Center:**
- **AM/FM CD, Refrigerator, Sink, Icemaker, Reverse Cycle Heat and Air Conditioning**
- **AC/heat w/ dedicated shore power connector**
- **Washer**
- **Dryer**
- **CO Detectors**
- **Fire Suppression System**

---

## Electrical Equipment

---

- **110 Volt Shore Power (AC)**
- **50 amp service**
- **Kohler 20 KW generator with hrs1**
- **2 Volt Ship Power (DC)**
- **5 8D Batteries**
- **2 battery chargers**
- **50 amp service**
  
- **(2) 240 volt 50 amp shore power cables. (One on cable master on manual connect)**
  
- **'Battery parallel switch**
- **Isolation transformer on shore power line**
- **GFCI 110 volt outlets**

---

## Engines and Machinery

---

- **6 Marineair Air conditioners with Reverse Cycle Heat (4 interior/2 bridge)**
- **Bilge blower**
- **Bilge pump**
- **Bow thruster**
- **Bridge controls**
- **Engine alarm**
- **Halon auto fire extinguishing system**
- **Fresh water cooling system**
- **Fuel filters**
- **Engine fuel shut off valve**

- **(3) Electric Marine Heads with Holding Tank**
- **Lube oil storage and transfer system**
- **Hydraulic steering**
- **Synchronizers**
- **Trim tabs**
- **Racor filters**
- **SS, hydraulic trim tabs**
- **Shore water connection w/PRV**
- **Fresh water tank monitor**
- **20 gal water heater**
- **Volvo electronic controls**
- **Fresh water cooling**
- **Dripless shaft logs**
- **Hydraulic steering**
- **Groco sea strainers**

---

## **Disclaimer**

The Company offers the details of this vessel in good faith but cannot guarantee or warrant the accuracy of this information nor warrant the condition of the vessel. A buyer should instruct his agents, or his surveyors, to investigate such details as the buyer desires validated. This vessel is offered subject to prior sale, price change, or withdrawal without notice.

---

## **Exclusions**

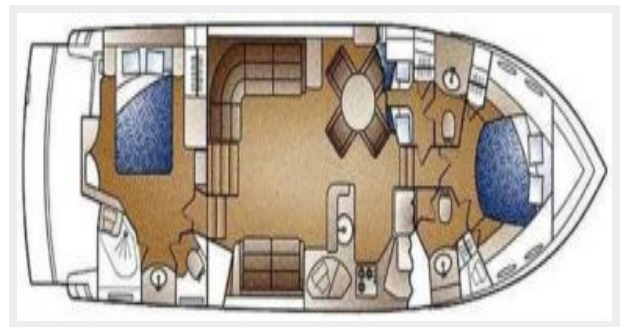
Owner's personal belongings.

---

## **Disclaimer**

The Company offers the details of this vessel or yacht in good faith but cannot guarantee or warrant the accuracy of this information nor warrant the condition of the vessel. A buyer should instruct his representatives, agents, or his surveyors, to investigate such details as the buyer desires validated. This vessel or yacht is offered subject to prior sale, price change, or withdrawal without notice.

# PHOTOS





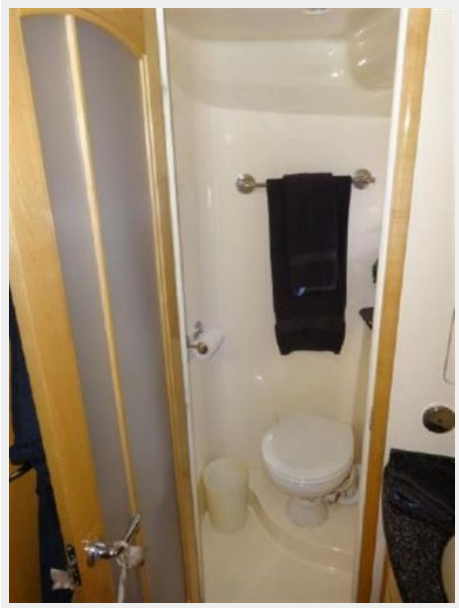


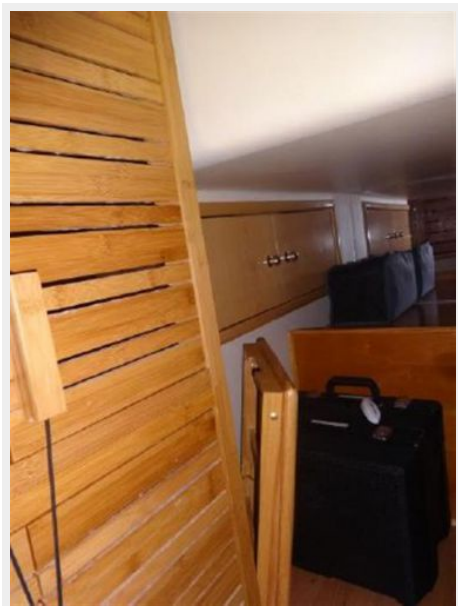
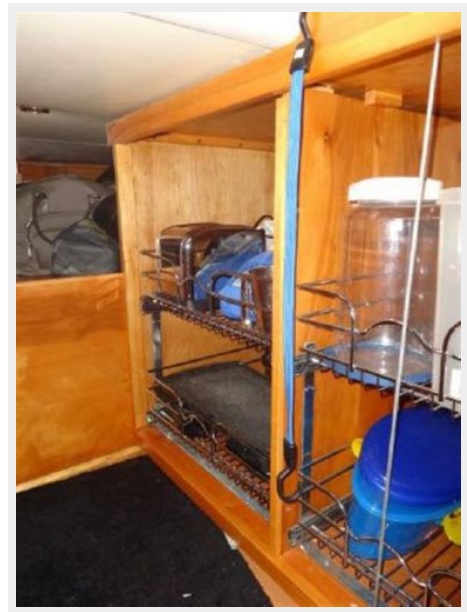














---

# CONTACTS

---

Andrey Shestakov, leading yacht broker of the sales department of Shestakov Yacht Sales Inc. Shestakov Yacht Sales Inc., the official representative of the Miami/Fort Lauderdale FL headquarters.

---

## Contact details

---

Email: [andrey@shestakovyachtsales.com](mailto:andrey@shestakovyachtsales.com)

Web: [shestakovyachtsales.com/en/](http://shestakovyachtsales.com/en/)

---

## Telephones

---

USA: +1(954)274-4435

---

## Office hours

---

Monday – Saturday: **9:00 - 21:00** EDT

Sunday: **closed**

---

## Address

---



Harbour Towne Marina, 850 NE 3rd St,  
STE 213, Dania, FL 33004