

SILVER LINING — CRANCHI



Builder: CRANCHI

Year Built: 2004

Model: Cruiser

Price: PRICE ON APPLICATION

Location: United States

LOA: 34' 0" (10.36m)

Beam: 11' 0" (3.35m)

Min Draft: 2' 10" (0.86m)

Cruise Speed: 23 Kts. (26 MPH)

Max Speed: 30 Kts. (35 MPH)

Our experienced yacht broker, Andrey Shestakov, will help you choose and buy a yacht that best suits your needs **SILVER LINING — CRANCHI** from our catalogue. Presently, at Shestakov Yacht Sales Inc., we have a wide variety of yachts available on our sale's list. We also work in close contact with all the big yacht manufacturers from all over the world.

If you would like to buy a yacht **SILVER LINING — CRANCHI** or would like help answering any questions concerning purchasing, selling or chartering a yacht, please call **+1(954)274-4435**

TABLE OF CONTENTS

| | |
|--|----|
| TABLE OF CONTENTS | 2 |
| SPECIFICATIONS | 4 |
| Overview | 4 |
| Basic Information | 4 |
| Dimensions | 4 |
| Speed, Capacities and Weight | 4 |
| Accommodations | 5 |
| Hull and Deck Information | 5 |
| Engine Information | 5 |
| DETAILED INFORMATION | 6 |
| NOTE: | 6 |
| Accommodations | 6 |
| Master Staterom, Forward | 6 |
| Guest Stateroom, Aft | 6 |
| Salon | 7 |
| Head | 7 |
| Galley, Below Deck, Amidship Starboard | 7 |
| Helm / Electronics and Navigation | 7 |
| Deck | 7 |
| Engine and Mechanical Equipment | 8 |
| Electrical System / Equipment | 8 |
| Cockpit / Fishing Equipment | 9 |
| Exclusions | 9 |
| Salesman's Comments | 9 |
| Exclusions | 9 |
| Disclaimer | 9 |
| PHOTOS | 10 |
| Profile 2 | 10 |

| | |
|--|----|
| Profile 3 | 10 |
| Master Stateroom 1 | 10 |
| Profile 4 | 10 |
| Master Stateroom 2 | 11 |
| Master Stateroom 3 | 11 |
| Guest Stateroom 1 | 11 |
| Guest Stateroom 2 | 11 |
| Guest Stateroom 3 | 11 |
| Salon 1 | 11 |
| Salon 2 | 12 |
| Salon 3 - Dinette | 12 |
| Head | 12 |
| Galley | 12 |
| Helm / Electronics & Navigation | 12 |
| Deck 1 - Companion Seating | 12 |
| Deck 2 - Cockpit Seating | 13 |
| Deck 3 - Cockpit Wet Bar | 13 |
| Deck 4 - Cockpit Refrigerator | 13 |
| Deck 5 - Fresh Water Deck Wash Down | 13 |
| Engine & Mechanical Equipment 1 - Port Engine | 14 |
| Deck 6 - Boarding Ladder | 14 |
| Engine & Mechanical Equipment 2 - Starboard Engine | 14 |
| Engine & Mechanical Equipment 3 - Bow Thruster | 14 |
| CONTACTS | 15 |
| Contact details | 15 |
| Telephones | 15 |
| Office hours | 15 |
| Address | 15 |

SPECIFICATIONS

Overview

BEFORE YOU LOOK AT SEA RAYS, FORMULAS OR CRUISERS, CHECK OUT THIS CRANCHI!!!

Cranchi has been a family owned boat builder since 1870! The Zaffiro 34 is a beautiful blend of quality and performance. Comfortable Helm Deck and Cockpit seating. Awesome Mid-Cabin with two single berths and filler. **Before considering any other sport cruiser in this LOA, TAKE A LOOK AT THE CRANCHI ZAFFIRO 34!!!**

Basic Information

Category: Cruiser

Sub Category: Express

Model Year: 2004

Year Built: 2004

Country: United States

Vessel Top: Bimini Top

Cockpit: Yes

Dimensions

LOA: 34' 0" (10.36m)

Beam: 11' 0" (3.35m)

Min Draft: 2' 10" (0.86m)

Speed, Capacities and Weight

Cruise Speed: 23 Kts. (26 MPH)

Max Speed: 30 Kts. (35 MPH)

Displacement: 18418 Pounds

Water Capacity: 126 Gallons

Fuel Capacity: 198 Gallons

Accommodations

Total Cabins: 2

Sleeps: 4

Total Heads: 1

Hull and Deck Information

Hull Material: Fiberglass

Deck Material: Fiberglass

Hull Configuration: Modified V-Hull

Hull Color: White

Engine Information

Engines: 2

Manufacturer: Volvo Penta

Model: KAD 43P / DP-E

Engine Type: I/O

Fuel Type: Diesel

DETAILED INFORMATION

NOTE:

BEFORE YOU LOOK AT SEA RAYS, FORMULAS OR CRUISERS, CHECK OUT THIS CRANCHI!!!

Accommodations

Sleeps four owners and guests in two Staterooms for a total of four berths. One Head with shower. Step into Cabin from centerline to find the large wraparound dinette to port, very efficient Galley to starboard. Aft of the Galley is the Head. Forward Master Stateroom with ample storage and flat-screen TV. The surprisingly large Guest Stateroom is located under the Helm Deck.

Master Staterom, Forward

- Mirror
- Drapes
- Paneling
- Cabinets
- Carpeting
- Double berth
- Stereo system
- Hanging locker
- Under bed drawer
- 19" Flat-screen TV
- Air conditioning / heater

Guest Stateroom, Aft

- Drapes
- Dresser
- Paneling
- Cabinets
- Carpeting
- Twin berths
- Hanging locker
- Under bed storage
- Air conditioning / heater
- Stereo system w/ speakers

Salon

- Dinette
- Drapes
- Storage
- Paneling
- High gloss teak table
- Teak & holly flooring
- Air conditioning / heater with controls
- Stereo system w/ CD player, speakers

Head

- Sink
- Shower
- Paneling
- Exhaust fan
- Medicine cabinet
- Overboard, recirculating, holding tank, electric head

Galley, Below Deck, Amidship Starboard

- Sink
- Refrigerator
- Water heater
- Teak & holly flooring
- Tappan microwave oven
- One-burner, electric stove
- Pressure, dockside fresh water system

Helm / Electronics and Navigation

- VHF radio
- 3" Compass
- Raymarine ST 6001 auto pilot
- Raymarine SL 530 GPS / Plotter
- Raymarine ST 40 speed & distance logs

Deck

- Fenders
- Bimini top
- Anchor davit
- Bridge curtain
- Transom door
- Swim platform
- Aft Deck cover
- Boarding ladder
- Navigation lights
- Cockpit wet bar
- Forward sun pad
- Cockpit refrigerator
- Teak swim platform
- Anchor w/ 150' lines
- Bolster-style Helm seat
- Side stanchions w/ life lines
- Roomy horseshoe-shaped lounge in Cockpit
- Fresh water, pressure Deck wash down system

Engine and Mechanical Equipment

- Fuel filters
- Bow thrusters
- Fire extinguisher
- (2) Bilge blowers
- Oil pressure alarm
- Fire control system
- Fresh water cooling
- Bridge engine controls
- Raw water sea strainer
- Engine fuel shut-off valve
- Engine temperature alarm
- Electric Glendinning controls
- Reverse cycle air conditioner
- Thermal, acoustical insulation
- Duo Prop Volvo Penta drives
- (3) Automatic, manual bilge pumps
- Twin 230 hp. Diesel I/O 2004 Volvo Penta KAD 43P / DP-E's w/ 112 hrs.

Electrical System / Equipment

- (3) Batteries

- 12v DC electrical system
- Automatic battery charger
- 110v AC electrical system
- Fischer Panda 4200 4kW generator

Cockpit / Fishing Equipment

- (4) Rod holders

Exclusions

Owner's personal gear and items.

Salesman's Comments

BEFORE YOU LOOK AT SEA RAYS, FORMULAS OR CRUISERS, CHECK OUT THIS CRANCHI!!!

Cranchi has been a family owned boat builder since 1870! The Zaffiro 34 is a beautiful blend of quality and performance. Comfortable Helm Deck and Cockpit seating. Awesome Mid-Cabin with two single berths and filler. **Before considering any other sport cruiser in this LOA, TAKE A LOOK AT THE CRANCHI ZAFFIRO 34!!!**

Exclusions

Owner's personal belongings.

Disclaimer

The Company offers the details of this vessel or yacht in good faith but cannot guarantee or warrant the accuracy of this information nor warrant the condition of the vessel. A buyer should instruct his representatives, agents, or his surveyors, to investigate such details as the buyer desires validated. This vessel or yacht is offered subject to prior sale, price change, or withdrawal without notice.

PHOTOS

Profile 2



Profile 3



Profile 4



Master Stateroom 1



Master Stateroom 2



Master Stateroom 3



Guest Stateroom 1



Guest Stateroom 2



Guest Stateroom 3



Salon 1



Salon 2



Salon 3 - Dinette



Head



Galley



Helm / Electronics & Navigation



Deck 1 - Companion Seating



Deck 2 - Cockpit Seating



Deck 3 - Cockpit Wet Bar



Deck 4 - Cockpit Refrigerator



Deck 5 - Fresh Water Deck Wash Down

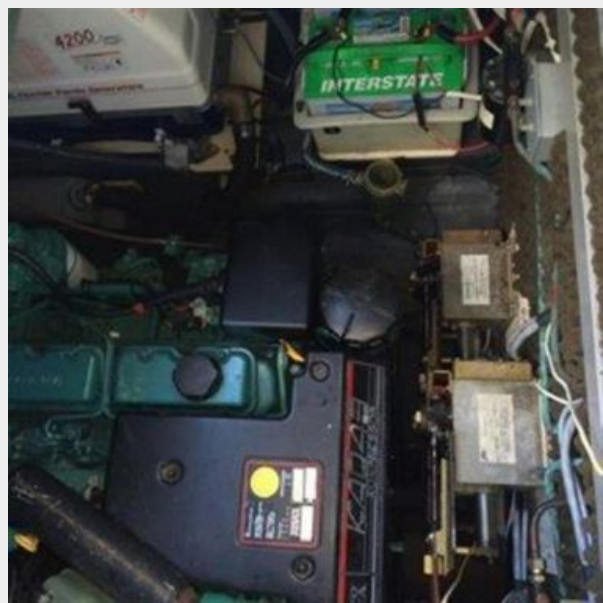


Engine & Mechanical Equipment 1 - Port Engine

Deck 6 - Boarding Ladder



Engine & Mechanical Equipment 2 - Starboard Engine



Engine & Mechanical Equipment 3 - Bow Thruster



CONTACTS

Andrey Shestakov, leading yacht broker of the sales department of Shestakov Yacht Sales Inc. Shestakov Yacht Sales Inc., the official representative of the Miami/Fort Lauderdale FL headquarters.

Contact details

Email: andrey@shestakovyachtsales.com

Web: shestakovyachtsales.com/en/

Telephones

USA: +1(954)274-4435

Office hours

Monday – Saturday: **9:00 - 21:00** EDT

Sunday: **closed**

Address



Harbour Towne Marina, 850 NE 3rd St,
STE 213, Dania, FL 33004