

## UNREEL — CABO



**Builder:** CABO

**Year Built:** 2007

**Model:** Sport Fisherman

**Price:** PRICE ON APPLICATION

**Location:** United States

**LOA:** 40' 0" (12.19m)

**Beam:** 15' 9" (4.80m)

**Min Draft:** 3' 5" (1.04m)

**Cruise Speed:** 31 Kts. (36 MPH)

**Max Speed:** 36 Kts. (41 MPH)

Our experienced yacht broker, Andrey Shestakov, will help you choose and buy a yacht that best suits your needs **UNREEL — CABO** from our catalogue. Presently, at Shestakov Yacht Sales Inc., we have a wide variety of yachts available on our sale's list. We also work in close contact with all the big yacht manufacturers from all over the world.

If you would like to buy a yacht **UNREEL — CABO** or would like help answering any questions concerning purchasing, selling or chartering a yacht, please call **+1(954)274-4435**

# TABLE OF CONTENTS

TABLE OF CONTENTS	2
SPECIFICATIONS	5
Overview	5
Basic Information	5
Dimensions	5
Speed, Capacities and Weight	5
Accommodations	5
Hull and Deck Information	6
Engine Information	6
DETAILED INFORMATION	7
Accommodations	7
Master Stateroom, Forward	7
Salon	7
Head	7
Galley, Below Deck, Amidship Port	8
Helm / Electronics and Navigation	8
Deck	8
Engine and Mechanical Equipment	9
Electrical System / Equipment	9
Cockpit / Fishing Equipment	10
Additional Features / Equipment	10
NOTE:	10
Exclusions	10
Salesman's Comments	10
Exclusions	11
Disclaimer	11
PHOTOS	12
Master Stateroom 1	12

---

Master Stateroom 2	12
Master Stateroom 3	12
Master Stateroom 4	12
Salon 1	13
Salon 2	13
Salon 3	13
Salon 4	13
Salon 5	14
Head	14
Galley 1	14
Galley 2	14
Galley 3 - Microwave Oven	15
Galley 4 - Stove	15
Helm / Electronics & Navigation 1	15
Helm / Electronics & Navigation 2	15
Helm / Electronics & Navigation 3	16
Helm / Electronics & Navigation 4	16
Helm / Electronics & Navigation 5	16
Helm / Electronics & Navigation 6	16
Helm / Electronics & Navigation 7	17
Helm / Electronics & Navigation 8	17
Helm / Electronics & Navigation 9	17
Helm / Electronics & Navigation 10	17
Deck 1	18
Deck 2	18
Deck 3	18
Deck 4	18
Deck 5	19
Engine & Mechanical Equipment 1	19

---

---

Engine & Mechanical Equipment 2	19
Engine & Mechanical Equipment 3	19
Engine & Mechanical Equipment 4	20
Engine & Mechanical Equipment 5	20
Engine & Mechanical Equipment 7	20
Engine & Mechanical Equipment 6	20
Electrical System / Equipment 1 - Electrical Panel	21
Engine & Mechanical Equipment 8	21
Electrical System / Equipment 2 - Batteries	21
Cockpit / Fishing Equipment 1	21
Cockpit / Fishing Equipment 2	22
Cockpit / Fishing Equipment 3	22
Cockpit / Fishing Equipment 4	22
Cockpit / Fishing Equipment 5	22
Cockpit / Fishing Equipment 6	23
Cockpit / Fishing Equipment 7	23
Cockpit / Fishing Equipment 8	23
<b>CONTACTS</b>	<b>24</b>
Contact details	24
Telephones	24
Office hours	24
Address	24

---

# SPECIFICATIONS

---

## Overview

---

This second owner provided an open checkbook to this 40' Cabo Express! Boat is professionally maintained! **CALL FOR DETAILS!!!**

## Basic Information

---

**Category:** Sport Fisherman

**Sub Category:** Express

**Model Year:** 2007

**Year Built:** 2007

**Country:** United States

**Vessel Top:** Hardtop W/Tower

**Cockpit:** Yes

## Dimensions

---

**LOA:** 40' 0" (12.19m)

**Beam:** 15' 9" (4.80m)

**Min Draft:** 3' 5" (1.04m)

## Speed, Capacities and Weight

---

**Cruise Speed:** 31 Kts. (36 MPH)

**Max Speed:** 36 Kts. (41 MPH)

**Displacement:** 28000 Pounds

**Water Capacity:** 95 Gallons

**Fuel Capacity:** 550 Gallons

## Accommodations

---

**Total Cabins:** 1

**Sleeps:** 4

**Total Heads:** 1

---

## Hull and Deck Information

---

**Hull Material:** Fiberglass

**Deck Material:** Fiberglass

**Hull Configuration:** Modified V-Hull

**Hull Color:** White

---

## Engine Information

---

**Engines:** 2

**Manufacturer:** MAN

**Model:** CRM

**Engine Type:** Inboard

**Fuel Type:** Diesel

---

# DETAILED INFORMATION

---

## Accommodations

---

Sleeps two owners and guests in one Stateroom plus settee sleeps two for a total of four berths. One Head with shower. Standard 40' Express layout with teak and holly sole, queen bed forward and hide-a-bed in Salon area. Custom shelving in floor area of Salon. Large stand-up rod storage.

## Master Stateroom, Forward

---

- Sole TV
- Carpeting
- Wallpaper
- Queen berth
- Hanging locker
- Under bed storage
- Teak & holly flooring
- Air conditioning w/ controls

## Salon

---

- Sofa
- Table
- Dinette
- Storage
- Sole TV
- Carpeting
- Wallpaper
- Teak & holly flooring
- Stereo system w/ speakers
- Air conditioning w/ controls

## Head

---

- Sink
- Shower
- Tile floor
- Wallpaper
- Exhaust fan

- Medicine cabinet
- Overboard, holding tank, electric head

---

## Galley, Below Deck, Amidship Port

---

- Sink
- Water heater
- Microwave oven
- Teak & holly flooring
- Refrigerator w/ freezer
- Two-burner, electric stove

---

## Helm / Electronics and Navigation

---

- GPS
- Compass
- Depth sounder
- Simrad auto pilot
- Speed & distance logs
- 7" NAV NET in Tower
- Furuno NAV NET fish finder
- FLIR Night Vision (new 2013)
- Furuno Black Box 25kW radar
- Furuno NAV NET chart plotter
- Icom M-602 VHF radio (primary)
- Icom M-422 VHF radio (secondary)
- Flush-mounted transducer (new 2014)
- MAX SEA Electronic display on Salon TV
- (3) Furuno RD-30's - (2) at Helm and (1) in Tower

---

## Deck

---

- Hatch cover
- Bridge curtain
- Anchor w/ lines
- Navigation lights
- Bow pulpit w/ rails
- (2) Stidd Helm seats
- Windshield washer & wipers
- Electric windlass (new 2014)
- Coast Guard approved safety package



- Bausch Tuna Tower w/ fiberglass hardtop
- Fresh water, salt water, pressure Deck wash down system
- Spreader lights - (2) AC powered lights & (2) 50,000 LED lights

---

## Engine and Mechanical Equipment

---

- Trim tabs
- Bilge blowers
- Trolling valves
- Dual fuel filters
- ZF transmission
- Hydraulic steering
- Fuel prime pumps
- Oil pressure alarm
- Oil transfer system
- Fire control system
- Fresh water cooling
- Engine synchronizers
- Tower engine controls
- Engine fuel shut-off valve
- Engine temperature alarm
- Props 26 x 34 - 4-Blades
- Engine Room gauge package
- Thermal, acoustical insulation
- Cruise low 27 knots - 44 gph.
- Cruise high 30+ knots - 55 gph.
- (1) Y-valve emergency bilge pump
- (5) Automatic, manual bilge pumps
- Reverse cycle air conditioner (Cabin & Helm)
- Twin 800 hp. Diesel I/B 2007 MAN CRM's w/ 780 hrs.

---

## Electrical System / Equipment

---

- Dockside cables
- 12.5kW Generator
- Battery parallel switch
- 12v DC electrical system
- 220v AC electrical system
- (8) Batteries (60 hrs. total amp time)
- Automatic battery charger (new 2014)
- (8) Batteries (60 hrs. total amp time) - New 2013

---

## Cockpit / Fishing Equipment

---

- Center rigger
- Rupp outriggers
- (5) Rod holders
- 4-sided Enclosure
- Eskimo ice machine
- Bausch Tuna Tower
- (4) Rod holders (Tower legs)
- 6-rod Rocket launcher (aft rail)

---

## Additional Features / Equipment

---

- Cockpit speakers
- Under water lights
- Windshield wipers
- Custom Deck rails
- Helm area air conditioning
- East Coast aluminum bow rail

780 hours - About 200 hours after MAN required heat exchangers removed, cleaned and resealed; Inter coolers removed, cleaned and resealed; Turbo housings cleaned; Air filters cleaned and recharged; Raw water pumps removed and end caps removed, Cams and impellers replaced; Gear and fuel coolers cleaned.

---

### NOTE:

---

*There are three systems (Reverso fuel polishing, Water maker and Bathymetric) that were operational but not used by this owner. THESE SYSTEMS ARE NOT GUARANTEED TO WORK!*

---

## Exclusions

---

Owner's personal gear and items.

---

## Salesman's Comments

---

This second owner provided an open checkbook to this 40' Cabo Express! Boat is professionally maintained! **CALL FOR DETAILS!!!**

---

## Exclusions

---

Owner's personal belongings.

---

## Disclaimer

---

The Company offers the details of this vessel or yacht in good faith but cannot guarantee or warrant the accuracy of this information nor warrant the condition of the vessel. A buyer should instruct his representatives, agents, or his surveyors, to investigate such details as the buyer desires validated. This vessel or yacht is offered subject to prior sale, price change, or withdrawal without notice.

# PHOTOS

**Master Stateroom 1**



**Master Stateroom 2**



**Master Stateroom 3**



**Master Stateroom 4**



**Salon 1**



**Salon 2**



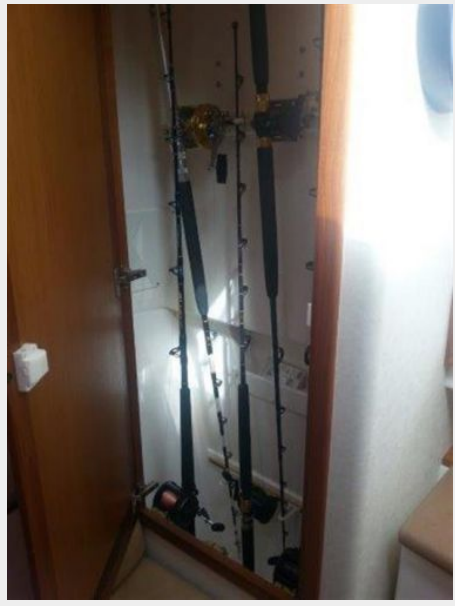
**Salon 3**



**Salon 4**



**Salon 5**



**Head**



**Galley 1**



**Galley 2**



**Galley 3 - Microwave Oven**



**Galley 4 - Stove**



**Helm / Electronics & Navigation 1**



**Helm / Electronics & Navigation 2**



**Helm / Electronics & Navigation 3**



**Helm / Electronics & Navigation 4**



**Helm / Electronics & Navigation 5**



**Helm / Electronics & Navigation 6**





Helm / Electronics & Navigation 7



Helm / Electronics & Navigation 8



Helm / Electronics & Navigation 9



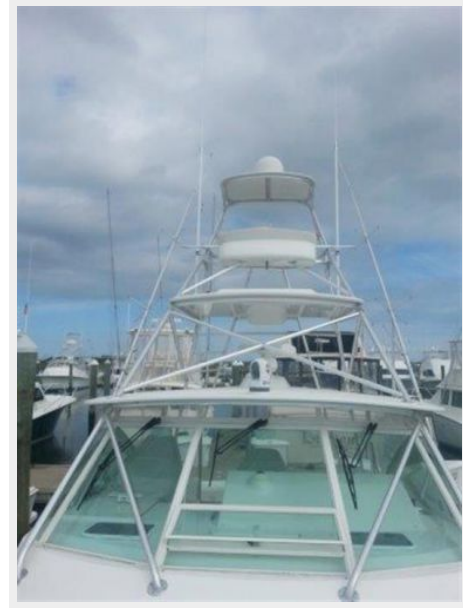
Helm / Electronics & Navigation 10



**Deck 1**



**Deck 2**



**Deck 3**



**Deck 4**



**Deck 5**



**Engine & Mechanical Equipment 1**



**Engine & Mechanical Equipment 2**



**Engine & Mechanical Equipment 3**



### Engine & Mechanical Equipment 4



### Engine & Mechanical Equipment 5



### Engine & Mechanical Equipment 6



### Engine & Mechanical Equipment 7



### Engine & Mechanical Equipment 8



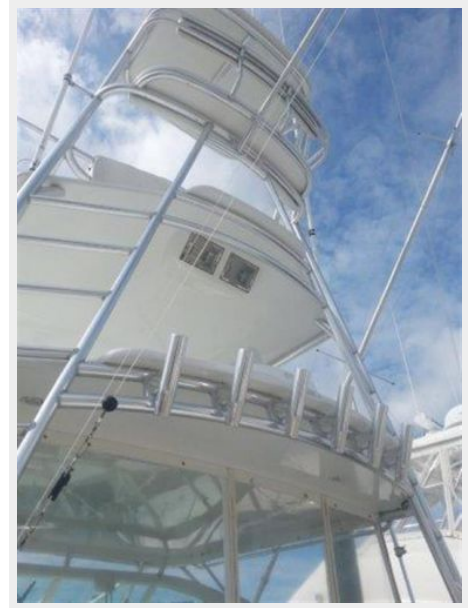
### Electrical System / Equipment 1 - Electrical Panel



### Electrical System / Equipment 2 - Batteries



### Cockpit / Fishing Equipment 1



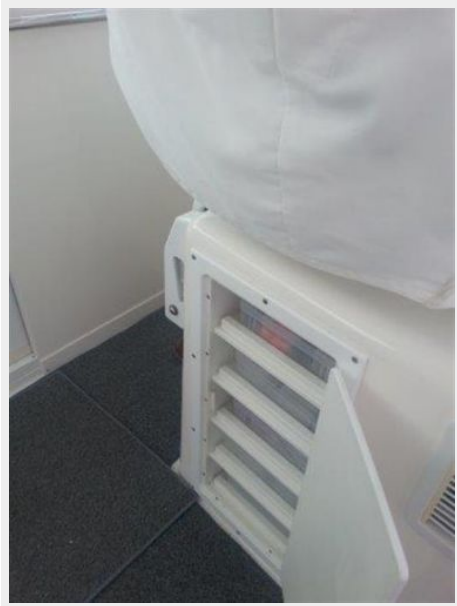
**Cockpit / Fishing Equipment 2**



**Cockpit / Fishing Equipment 3**



**Cockpit / Fishing Equipment 4**



**Cockpit / Fishing Equipment 5**



**Cockpit / Fishing Equipment 6**



**Cockpit / Fishing Equipment 7**



**Cockpit / Fishing Equipment 8**



# CONTACTS

---

Andrey Shestakov, leading yacht broker of the sales department of Shestakov Yacht Sales Inc. Shestakov Yacht Sales Inc., the official representative of the Miami/Fort Lauderdale FL headquarters.

## Contact details

---

Email: [andrey@shestakovyachtsales.com](mailto:andrey@shestakovyachtsales.com)

Web: [shestakovyachtsales.com/en/](http://shestakovyachtsales.com/en/)

## Telephones

---

USA: +1(954)274-4435

## Office hours

---

Monday – Saturday: **9:00 - 21:00** EDT

Sunday: **closed**

## Address

---



Harbour Towne Marina, 850 NE 3rd St,  
STE 213, Dania, FL 33004