

## CHRISTIE ELLEN — EAGLE



**Builder:** EAGLE

**Year Built:** 2004

**Model:** Trawler

**Price:** PRICE ON APPLICATION

**Location:** United States

**LOA:** 40' 6" (12.34m)

**Beam:** 14' 6" (4.42m)

**Min Draft:** 4' 6" (1.37m)

Our experienced yacht broker, Andrey Shestakov, will help you choose and buy a yacht that best suits your needs **Christie Ellen — EAGLE** from our catalogue. Presently, at Shestakov Yacht Sales Inc., we have a wide variety of yachts available on our sale's list. We also work in close contact with all the big yacht manufacturers from all over the world.

If you would like to buy a yacht **Christie Ellen — EAGLE** or would like help answering any questions concerning purchasing, selling or chartering a yacht, please call **+1(954)274-4435**

---

# TABLE OF CONTENTS

---

TABLE OF CONTENTS	2
SPECIFICATIONS	3
Overview	3
Basic Information	4
Dimensions	4
Speed, Capacities and Weight	4
Accommodations	4
Hull and Deck Information	4
Engine Information	4
DETAILED INFORMATION	5
Electronics	5
Electrical Equipment	5
Inside Equipment	5
Additional Information	5
Exclusions	5
Disclaimer	5
PHOTOS	7
CONTACTS	16
Contact details	16
Telephones	16
Office hours	16
Address	16

---

# SPECIFICATIONS

---

## Overview

---

The 2004 Eagle 40 is a raised pilothouse trawler yacht designed and built by Transpacific. Powered with a single Cummins 230hp engine, she has exceptional sea-keeping qualities with stability yet an economy of motion.

Her wide walk-around decks, high safe-&-dry bulwarks, comfortable aftdeck area and a large upper-deck steering station are part of her trademark attributes.

The Christie Ellen has an attention to details with a satin finish interior. Her salon is truly special with an open layout. Five good-sized windows—two on each side and one aft—illuminate the salon, and slide open for cross-ventilation in warm weather. The galley is located forward on the port side, including a peninsula counter to separate that space from the adjoining dining area just aft. She includes a gas oven and cooktop, and an under-the-counter fridge over freezer and an additional freezer just adjacent, built into a starboard-side cabinet opposite the galley. A short stairway to starboard of centerline leads up to the pilothouse, where on the port side a raised observation lounge with a refreshment table offers passengers a commanding view through three windshield panes, each fitted with a pantograph wiper. To starboard, the lower helm station features a raised pilot seat facing an instrument console sufficiently large to accommodate requisite navigation displays, engine controls, and electronics, with the ship's DC panel just below. A large chart table adjacent to the console hinges upward for access to a chart and document storage compartment, and sliding doors open for immediate access to either side deck. Two windows in the pilothouse aft bulkhead offer sightlines astern. The boat's pilothouse lounge and salon settee may be converted to accommodate overnight guests, with additional room on a youth-size berth made up from the saloon's starboard-side banquette.

Portside and forward of the pilothouse leads to a vestibule that offers additional hanging locker and drawer storage. Forward is the single stateroom featuring an island queen-size berth, drawer and hanging storage arrayed along either hullside, and an adjacent head with a separate stall shower.

Returning to the aft past the salon is the spacious cockpit and teak ladder to the upper deck. Enjoy the panoramic views and full upper helmstation with reversible split helm seat to face forward or aft.

The Christie Ellen is a fine example of a well built long range cruiser!

---

## Basic Information

---

**Category:** Trawler

**Model Year:** 2004

**Year Built:** 2004

**Country:** United States

---

## Dimensions

---

**LOA:** 40' 6" (12.34m)

**LWL:** 36' 10" (11.23m)

**Beam:** 14' 6" (4.42m)

**Min Draft:** 4' 6" (1.37m)

---

## Speed, Capacities and Weight

---

**Displacement:** 28000 Pounds

**Water Capacity:** 240 Gallons

**Fuel Capacity:** 440 Gallons

---

## Accommodations

---

**Total Cabins:** 1

**Total Heads:** 1

---

## Hull and Deck Information

---

**Hull Material:** Fiberglass

---

## Engine Information

---

**Engines:** 1

**Manufacturer:** Cummins

**Model:** QSB

**Fuel Type:** Diesel

---

## DETAILED INFORMATION

---

### Electronics

---

- Depthsounder • Radar - Upper & Lower Display, Furuno RD30
- Radio - Clarion w/ Sirius/XM • Compass - Ritchie
- GPS - Lower -Furuno NAV NET, C-MAP-NT • VHF - ICOM . TV - RCA . Auto Pilot - Simrad 11

### Electrical Equipment

---

- Shore Power Inlet - 50 amp
- Generator - Kohler 5 Kw, 119 hours

### Inside Equipment

---

- Bow Thruster - Vetus
- Oven - Propane
- Microwave Oven - GE Profile
- Marine Head
- Air Conditioning
- Heating
- Hot Water
- Refrigerator - Nova Cool
- Battery Charger

### Additional Information

---

She is having her cap rails and splash rails refinished late September 2014 Exclusions: - 10' Caribe Dinghy - Honda 15 HP outboard

### Exclusions

---

Owner's personal belongings.

### Disclaimer

---

The Company offers the details of this vessel or yacht in good faith but cannot guarantee or warrant the accuracy of this information nor warrant the condition of the vessel. A buyer should instruct his representatives, agents, or his surveyors, to investigate such details as the buyer desires validated. This vessel or yacht is offered subject to prior sale, price change, or withdrawal without notice.

# PHOTOS





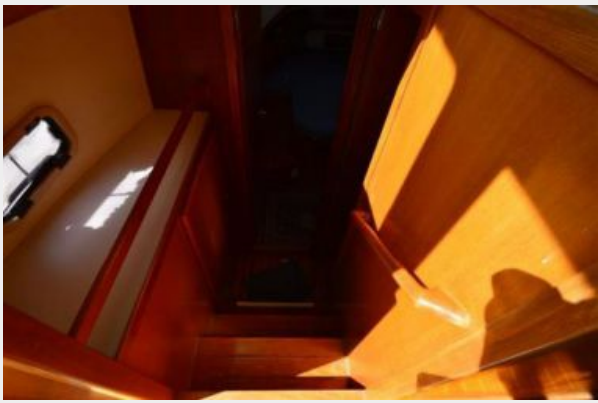








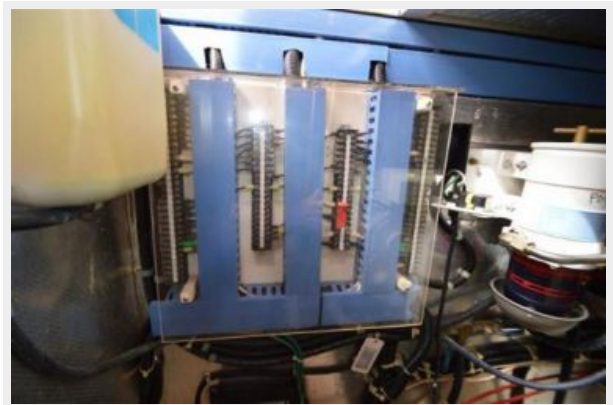
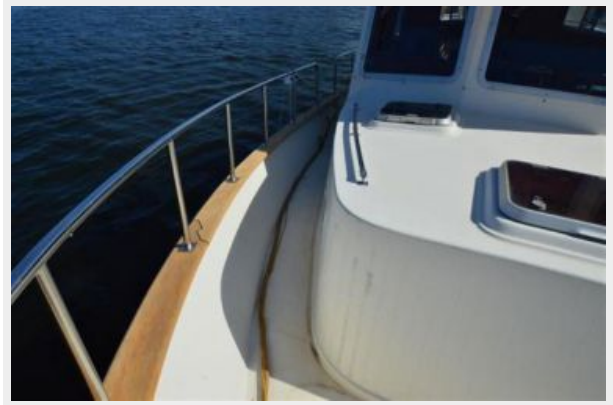
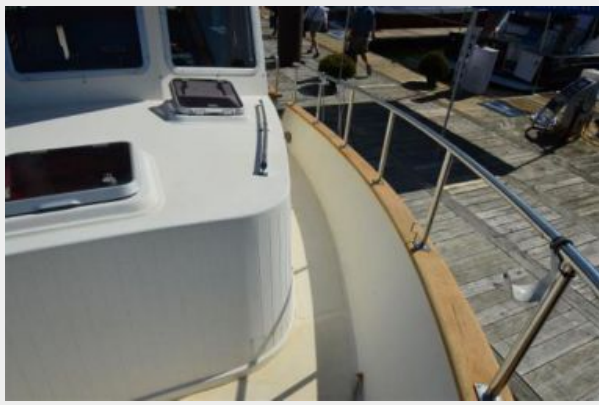
















# CONTACTS

---

Andrey Shestakov, leading yacht broker of the sales department of Shestakov Yacht Sales Inc. Shestakov Yacht Sales Inc., the official representative of the Miami/Fort Lauderdale FL headquarters.

## Contact details

---

Email: [andrey@shestakovyachtsales.com](mailto:andrey@shestakovyachtsales.com)

Web: [shestakovyachtsales.com/en/](http://shestakovyachtsales.com/en/)

## Telephones

---

USA: +1(954)274-4435

## Office hours

---

Monday – Saturday: **9:00 - 21:00** EDT

Sunday: **closed**

## Address

---



Harbour Towne Marina, 850 NE 3rd St,  
STE 213, Dania, FL 33004