

## LOW HOURS — SILVERTON



**Builder:** SILVERTON

**Year Built:** 2006

**Model:** Motor Yacht

**Price:** PRICE ON APPLICATION

**Location:** United States

**LOA:** 45' 0" (13.72m)

**Beam:** 15' 4" (4.67m)

**Max Draft:** 3' 9" (1.14m)

Our experienced yacht broker, Andrey Shestakov, will help you choose and buy a yacht that best suits your needs **Low Hours — SILVERTON** from our catalogue. Presently, at Shestakov Yacht Sales Inc., we have a wide variety of yachts available on our sale's list. We also work in close contact with all the big yacht manufacturers from all over the world.

If you would like to buy a yacht **Low Hours — SILVERTON** or would like help answering any questions concerning purchasing, selling or chartering a yacht, please call **+1(954)274-4435**

# TABLE OF CONTENTS

TABLE OF CONTENTS	2
SPECIFICATIONS	5
Basic Information	5
Dimensions	5
Speed, Capacities and Weight	5
Accommodations	5
Hull and Deck Information	5
Engine Information	6
DETAILED INFORMATION	7
Accommodations	7
Galley	7
Electrical	8
Deck	8
Exclusions	8
Disclaimer	9
PHOTOS	10
Port Profile	10
Bow	10
Bow	10
Bow	10
Bow facing aft	10
Bow Pulpit / Electronic Windlass	10
Cockpit	11
45 Convertible	11
Cockpit	11
Cock	11
Cockpit Wet Bar	11
Cockpit	11

Ice Maker in Cockpit	12
Helm Station	12
Helm Station	12
Forward Seating of Helm	12
Helm Station	12
Helm Station	12
VHF / Bow Thruster	13
Northstar 6000i	13
Furuno NavNet	13
Electronic Controls	13
Molded Stairs	13
Salon Facing Forward	13
Galley	14
Salon Facing Aft	14
Starboard Seating	14
Salon Facing Aft	14
PoPort Seating / Salon	14
Galley	14
Pop-up Flat Screen TV	15
Facing Forward	15
Galley	15
Hallway Facing Forward	15
Master Stateroom	15
Master Stateroom	15
Master Stateroom	16
Master Stateroom	16
Master Head/Shower	16
Master Head/Shower	16
Starboard Guest Stateroom	16

Starboard Guest Stateroom	16
Starboard Guest Stateroom	17
Starboard Guest Stateroom	17
Port Guest Stateroom	17
Port Guest Stateroom	17
Port Guest Stateroom	17
Day Head / Shower - Port Side	17
Day Head / Shower - Port Side	18
Engine Room (facing Aft)	18
Engine Room	18
Engine Room	18
Engine Room	18
Engine Room	18
Engine Room	19
Engine Room	19
Generator	19
Generator	19
Generator	19
Layout	19
Swim Platform	20
Swim Platform / Lift	20
CONTACTS	21
Contact details	21
Telephones	21
Office hours	21
Address	21

---

# SPECIFICATIONS

---

## Basic Information

---

**Category:** Motor Yacht

**Sub Category:** Convertible

**Model Year:** 2006

**Year Built:** 2006

**Country:** United States

## Dimensions

---

**LOA:** 45' 0" (13.72m)

**Beam:** 15' 4" (4.67m)

**Max Draft:** 3' 9" (1.14m)

**Clearance:** 16' 10" (5.13m)

## Speed, Capacities and Weight

---

**Displacement:** 38000 Pounds

**Water Capacity:** 120 Gallons

**Holding Tank:** 72 Gallons

**Fuel Capacity:** 617 Gallons

## Accommodations

---

**Total Berths:** 6

**Total Heads:** 1

## Hull and Deck Information

---

**Hull Material:** Fiberglass

---

## Engine Information

---

**Engines:** 2

**Manufacturer:** Volvo Penta

**Model:** D12-715

**Engine Type:** Inboard

**Fuel Type:** Diesel

---

# DETAILED INFORMATION

---

## Accommodations

---

Sleeps Six;

Master Stateroom Fwd-Sleeps Two

2nd Stateroom, Portside-Side by Side-Sleeps Two Separately

3rd Stateroom, Starboard, full Sized-Sleeps Two

HEADS;

Master Head, (Private) to Starboard

Large Separate Stall Shower

Vacuflush Fresh Water Toilet

Dupont "Corian" Counters

Ample Cherry Upper/Lower Storage Lockers

Day Head to Port

Vacuflush Fresh Water Toilet

Dupont "Corian" Counters

Large Separate Stall Shower

Ample Cherry Upper/Lower Lockers

## Galley

---

Separate Subzero Under-counter Refrigerator and Freezer

Dupont "Corian" Counters-Forward and Aft Galley

Large Circular Polished Stainless Steel Sink

Kenyon "Euro Kera" 3 Burner Flush Mount Electric Stove

Sharp Carousel Microwave/Convection Oven

Ample Upper/Lower Cherry Drawers and Lockers

---

## Electrical

---

50 Amp Dockside Power w/Cord

Glendenning Cablemaster

Port and Stb Pro Mariner 25 Amp Converters/Battery Chargers

Kohler 13 kW Generator w/Sound Shield (360 Hours)

Marine Air, Air Conditioning, Reverse Cycle--3 Zone

Attwood 20 Gallon Hot Water Heater

Samsung 26" Digital Flat Screen Salon TV w/Lift

---

## Deck

---

Bow Pulpit

ACR, URP-102 Remote Spotlight, Helm Controls

Maxwell Windlass w/Plow Anchor, Chain and Rode

Bow Thruster

Large Sunpad

Black Mesh Salon Windshield Cover

Hardtop /Four Sided Enclosure, (Black)

Custom Helm and Captain/Mate's Seat

Breaker Panel on Helm

Cockpit Cabinet on Port Side

Raritan Ice Maker--Cockpit Cabinet

Cockpit Hatches w/Bins

Hot and Cold Transom Shower

Swim Platform

---

## Exclusions

---



Owner's personal belongings.

## Disclaimer

---

The Company offers the details of this vessel or yacht in good faith but cannot guarantee or warrant the accuracy of this information nor warrant the condition of the vessel. A buyer should instruct his representatives, agents, or his surveyors, to investigate such details as the buyer desires validated. This vessel or yacht is offered subject to prior sale, price change, or withdrawal without notice.

# PHOTOS

**Bow**



**Port Profile**



**Bow**



**Bow**



**Bow facing aft**



**Bow Pulpit / Electronic Windlass**



**45 Convertible**



**Cockpit**



**Cockpit**



**Cock**



**Cockpit Wet Bar**



**Cockpit**





**Ice Maker in Cockpit**



**Helm Station**



**Helm Station**



**Forward Seating of Helm**



**Helm Station**



**Helm Station**



**Northstar 6000i**



**VHF / Bow Thruster**



**Electronic Controls**



**Furuno NavNet**



**Molded Stairs**



**Salon Facing Forward**





**Galley**



**Salon Facing Aft**



**Starboard Seating**



**Salon Facing Aft**



**PoPort Seating / Salon**



**Galley**



**Pop-up Flat Screen TV**



**Facing Forward**



**Galley**



**Hallway Facing Forward**



**Master Stateroom**

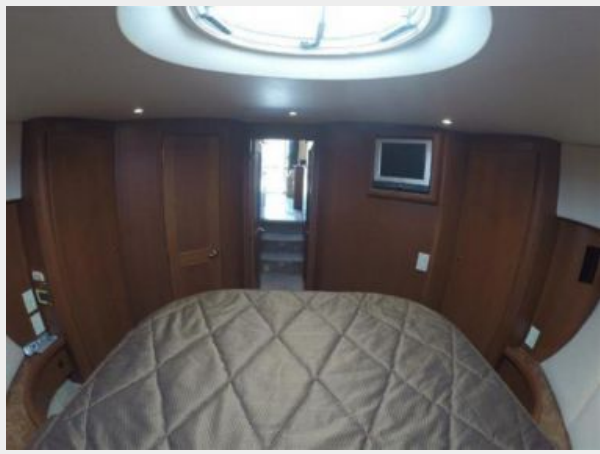


**Master Stateroom**

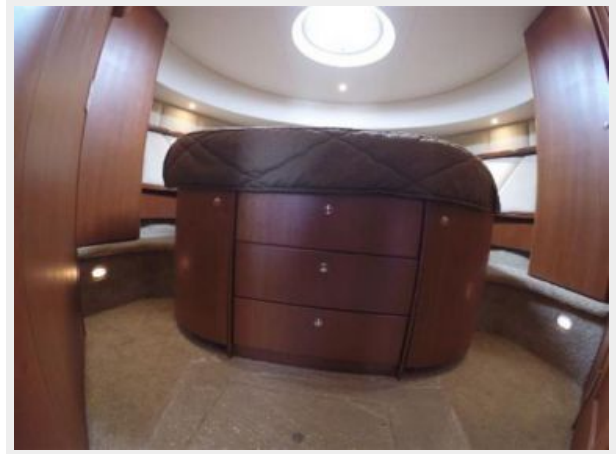




**Master Stateroom**



**Master Stateroom**



**Master Head/Shower**



**Master Head/Shower**



**Starboard Guest Stateroom**



**Starboard Guest Stateroom**





**Starboard Guest Stateroom**



**Starboard Guest Stateroom**



**Port Guest Stateroom**



**Port Guest Stateroom**



**Port Guest Stateroom**



**Day Head / Shower - Port Side**



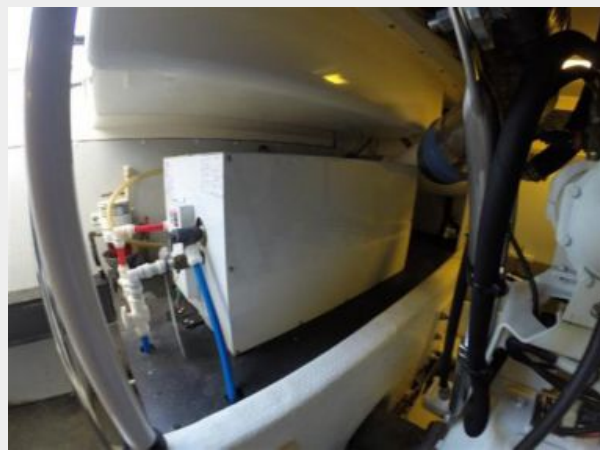
**Day Head / Shower - Port Side**



**Engine Room (facing Aft)**



**Engine Room**



**Engine Room**



**Engine Room**



**Engine Room**





Engine Room



Engine Room



Generator



Generator



Generator



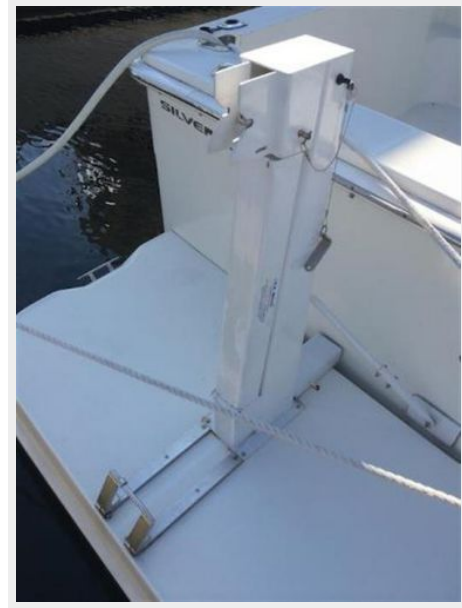
Layout



### Swim Platform / Lift



### Swim Platform



# CONTACTS

---

Andrey Shestakov, leading yacht broker of the sales department of Shestakov Yacht Sales Inc. Shestakov Yacht Sales Inc., the official representative of the Miami/Fort Lauderdale FL headquarters.

## Contact details

---

Email: [andrey@shestakovyachtsales.com](mailto:andrey@shestakovyachtsales.com)

Web: [shestakovyachtsales.com/en/](http://shestakovyachtsales.com/en/)

## Telephones

---

USA: +1(954)274-4435

## Office hours

---

Monday – Saturday: **9:00 - 21:00** EDT

Sunday: **closed**

## Address

---



Harbour Towne Marina, 850 NE 3rd St,  
STE 213, Dania, FL 33004