

MISS SHUGA — QUEENSHIP



Судостроитель: QUEENSHIP

Год постройки: 2004

Модель: Моторная яхта

Цена: **ЦЕНА ЯХТЫ ПО ЗАПРОСУ**

Местонахождение: United States

Длина общая: 76' 7" (23.34m)

Ширина: 17' 6" (5.33m)

Макс. осадка: 5' 8" (1.73m)

Крейс. скорость: 18 Kts. (21 MPH)

Макс. скорость: 22 Kts. (25 MPH)

Купить **MISS SHUGA — QUEENSHIP** а также выбрать подходящую вам яхту из нашего **каталога яхт** вам поможет опытный яхтенный брокер Андрей Шестаков. На сегодняшний день компания **Shestakov Yacht Sales Inc.** имеет большое количество яхт в **собственном списке продаж**, а также тесно сотрудничает со всеми крупными **яхтенными производителями** по всему миру.

Для того чтобы купить яхту **MISS SHUGA — QUEENSHIP** а также проконсультироваться по любому вопросу связанному с покупкой, продажей, чартером яхт позвоните по телефону **+7(918)465-66-44**.

ОГЛАВЛЕНИЕ

ОГЛАВЛЕНИЕ	2
ХАРАКТЕРИСТИКИ	6
Основная информация	6
Размеры	6
Скорость, вместимость и масса	6
Размещение	6
Корпус и палуба	7
Информация о двигателе	7
ПОДРОБНОЕ ОПИСАНИЕ	8
VESSEL WALKTHROUGH	8
Salon	8
Pilothouse/Galley Area	9
Pilothouse	9
Companionway	10
VIP Suite	10
VIP Head	10
Guest Cabin	10
Guest Head	11
Master Cabin	11
Master Cabin His/Her Heads	11
Foredeck	12
Cockpit	12
Fly Bridge	12
Helm Equipment	13
Hardtop Equipment	13
Boat Deck Equipment	13
Crew Cabin	13
Engine Room	14

Electrical Equipment	14
Remarks	14
Exclusions	14
Исключения	14
Отказ от ответственности	15
ФОТОГРАФИИ	16
Salon looking forward	16
Salon looking port	16
Salon bar area	16
Salon to Starboard	16
Salon looking aft	16
Galley looking aft	16
Galley with partition closed	17
Galley to starboard	17
Helm area	17
Pilothouse looking aft	17
Helm	17
Helm	17
Electronic adjusted Helm chair	18
Engine hours	18
Companionway Steps	18
Pilothouse storage	18
Companionway Laundry	19
VIP looking forward	19
VIP Head	19
VIP to port	19
Guest Cabin	20
Guest head	20
Guest head sink detail	20

Master looking aft	20
Master to starboard	20
Master looking forward	20
Centerline Master shower	21
Portside master head	21
Starboard side head	21
Bow lounge	21
Aft Deck Flybridge Ladder	21
Aft Deck to port	21
Aft Deck Table	22
Cockpit	22
Stern	22
Starboard side cockpit remote	22
Flybridge looking forward	22
Flybridge seating	22
Flybridge Helm	23
Helm detail	23
Boat Deck Grill	23
Boat Deck sink/fridge	23
Boat Deck	23
Crew Cabin looking foward	23
Crew Head	24
Crew Galley	24
Starboard engine	24
Port engine	24
Fuel management system	25
Starboard generator	25
Hardtop equipment	25
Heading out	25

КОНТАКТЫ	26
-----	-----
Контактная информация	26
-----	-----
Телефоны	26
-----	-----
Время работы	26
-----	-----
Адрес	26
-----	-----

ХАРАКТЕРИСТИКИ

Основная информация

Тип судна: Моторная яхта

Подкатегория: Кубрик

Модельный год: 2004

Год постройки: 2004

Страна: United States

Размеры

Длина общая: 76' 7" (23.34m)

Ширина: 17' 6" (5.33m)

Макс. осадка: 5' 8" (1.73m)

Скорость, вместимость и масса

Крейс. скорость: 18 Kts. (21 MPH)

Крейсерская скорость поворота: 2000 Kts.

Макс. скорость: 22 Kts. (25 MPH)

Макс. скорость поворота: 2300 Kts.

Вместимость воды: 356 Gallons

Вместимость сточного бака: 196 Gallons

Объем топливного бака: 2172 Gallons

Размещение

Всего кают: 3

Спальные места: 6

Всего ком. состава: 3

Каюта капитана: Да

Койки экипажа: 1

Корпус и палуба

Материал корпуса: Fiberglass

Материал палубы: Teak

Комплектация корпуса: Modified V-Hull

Дизайнер экстерьера: Queenship Yachts

Дизайнер интерьера: KD Design Studio

Информация о двигателе

Двигатели: 2

Производитель: Caterpillar

Модель: 1400 HP 3412

Тип двигателя: Inboard

Тип топлива: Diesel

ПОДРОБНОЕ ОПИСАНИЕ

VESSEL WALKTHROUGH

NOT FOR SALE TO US RESIDENTS WHILE IN US WATERS Boarding MISS SHUGA is either from the port or starboard side decks or from a floating dock access and is easy via the Integral swim platform and walk through transom door. The teak soled Cockpit has a centerline watertight door to the Crew/Engine Room area and curved port and starboard steps to the Aft Deck. The Aft Deck has a large C shaped settee and table for alfresco dining and ladder steps to the Boat Deck. The Salon entrance is via the sliding door slightly to starboard. To port is a three cushion settee with storage below. To starboard are several cabinets and a popup TV. Two loose chairs face inboard and can be used at the adjustable height table in front of the settee. Two barstools face the Galley. One step up are curved steps to the Flybridge on the portside and large open Galley on the starboard side. Next forward is a two person settee and table facing forward. The centerline helm has an expansive array of electronics, a Pompanette International Series helm seat and a three panel windshield. Steps to starboard lead below. A separate washer dryer is behind a gloss cherry door at the bottom of the first landing. All the way forward is the VIP Cabin with an island queen size berth and a private head and shower. Aft to port is a twin lower berth Cabin with a private head and shower. All the way aft is a queen size centerline master berth. Twin doors flank the berth giving access to His and Her Heads with a large Jacuzzi tub between. There is a small settee, a vanity and ample storage in the Master Cabin. The Flybridge has interior access, a centerline helm, ample seating under a fiberglass hardtop with a three side enclosure. The Boat Deck aft has a grill, 2500 lb. davit, a freezer, sink and ample storage as well as a 12' RIB tender. The Crew area is three steps down from the watertight Aft Cockpit door. There is a double berth to port, a head and locker area to starboard and a centerline shower that gives access to the fully equipped Engine Room.

Salon

A centerline two panel sliding aluminum door provides the entryway to the yacht's Salon, fixed sidelights are both port and starboard. Starting at the starboard side aft is a three shelf fiddled open bookcase. A chest high, gloss cherry countertop is next forward and has four drawers followed by two cabinet doors concealing a portion of the yacht's entertainment equipment. This includes a Yamaha AV/stereo receiver, a Direct TV receiver with an HD DVR, a Sony Blue Ray player, all expertly built into a rack system. Next forward are two storage cabinets with a digital safe within. Further forward are two more cabinet doors concealing the balance of the yacht's entertainment equipment, a B&K 6 zone receiver, a Panamax voltage regulator, an APC power conditioner with battery backup and the KVH Tracvision control center. Furthest forward are four more drawers to create a symmetrical grouping of cabinets/drawers. Outboard of the cabinets is a popup 48" LG HD TV. There are pleated shades for the side windows as well as the aft doors and sidelights. Above the windows is a curved soffit delivering cool air. Dimmable halogen accent lights face downward. Forward in the Salon is a curved granite countertop with two barstools facing the Galley. A sliding Soji screen can close off the Galley as needed. It raises

electrically from below. To port starting aft is an upholstered occasional chair facing forward, a cabinet with three drawers and three fiddled bookshelves above. Next forward is a four person upholstered settee with storage below. Lying in front of the settee is an adjustable height coffee table that raises and expands in size, suitable as a dining table for six persons. On the forward end of the settee is a built in end table with three drawers that matches the one aft. Also in the Salon are two dining chairs that can be pulled up to the dining coffee table, eight overhead mini spots on a dimmer, two stereo speakers, a table lamp, a carpeted sole with a carpet runner and digital AC controls.

Pilothouse/Galley Area

Up one step from the Salon is a stainless and wood spiral staircase that leads to the primary Flybridge access. To starboard is a large pantry cabinet with two doors and multiple shelves within. The Galley is next forward to starboard, is C shaped and contains the following equipment: (2) Sub Zero refrigerator drawers w/cherry fronts (2) Sub Zero freezer drawers w/cherry fronts Miele Ceran top 4 burner cook top Miele built in glass front oven GE stainless steel microwave Silhouette exhaust fan w/work light Broan cherry front trash compactor Garbage disposal Miele dishwasher w/cherry wood front Franke stainless steel under mount sink Grohe pullout spray faucet (9) Cherry cabinet doors (5) Cherry drawers Maple planked sole (6) Overhead halogen mini spots Small deadlight w/Silhouette shade

Pilothouse

The Pilothouse is open to the Galley and just forward. To port is a two person leather raised settee with a cherry countertop with an ebony inlay. There are four storage drawers below. The sole of this area is maple plank with a padded carpet runner throughout. Centerline is a Pompanette electrically adjustable leather helm seat. The helm itself is very well equipped and includes the following equipment: (2) KEP 15" color monitors for radar/plotter/chart/depth Furuno Nav Net 3D w/secondary radar & GPS Furuno 72 mile color radar (2) Cat LCD engine monitors Simrad AP 20 autopilot Icom 604 VHF w/DSC Naiad stabilizer Multisea II digital stabilizer controls (10) Auto/manual bilge pump controls RCL 100 Point Pad spotlight control Main engine start/stop switches Sidepower joystick bow thruster control Glendinning electronic engine controls Video selector allowing Nav Net, ship's PC, Nobletec charting software or radar to be displayed on either KEP display Furuno FI 50 depth/speed digital indicator Furuno FI 50 apparent wind/direction indicator (2) Dual Pyrometer (reads exhaust temperature) (2) Wireless mouses Bennett trim tab controls Fireboy monitor panel (3) Windshield wiper/washer controls 6" Ritchie magnetic compass Village Marine water maker panel Yacht schematic w/fire/bilge pump & holding tank alarms Tank Sentry for main waste tank system Tank catch (1) for aft waste tank system Spill Free 3 position fuel fill monitor Xantrex Sine Wave inverter voltage display Custom wood six spoke helm wheel Panasonic phone system Canon printer Skipper 150 Sat phone for voice & data Router for whole boat wireless system Heart tank tender for freshwater tank Start/stop switches for generators Shore supply indicator light Kilo Pak generator full gauge panels Also in the Pilothouse are five storage drawers, six storage cabinets & three red/white

overhead lights. Facing forward from the Galley but within the Pilothouse are six drawers, many fiddled for glassware, a tambour sliding cabinet for stemware and silverware, seven bottle wine storage and a black granite countertop above. Also in the Pilothouse are two overhead stereo speakers, four halogen mini spots, digital AC controls and an innovative AC delivery vent facing forward.

Companionway

To starboard from the Pilothouse are seven curved steps with step lights leading below. At the base of the step heading forward is a full size cherry door concealing front loading separate GE washer and dryer. Forward to port is the twin bed Guest Suite. All the way forward is the VIP Suite. Aft of the main landing and down four more steps is the Master Cabin with His and Her Heads separated by a large Jacuzzi tub.

VIP Suite

A centerline island berth low enough to easily get in is on centerline. There are four drawers under the berth facing aft. The berth has a “four poster” design but with a subtle execution. There are twin dimmable sconce lights above the berth on the forward bulkhead for accent. Shelves to both port and starboard serve as nightstands. They run aft and terminate into two cabinets and a drawer each side below the countertop. Above are opening stainless steel portholes set into cherry panels with Duette shades as needed. Continuing aft on both sides are bifold cherry closet doors with cedar lining and cedar shelves within. Aft to starboard is the private Head entrance. Aft to port is an LG 26” LCD TV mounted on the wall, centerline is the cherry entry door. Also in this cabin is a carpeted sole, six overhead halogen mini spots, two stereo speakers and a smoke alarm.

VIP Head

The VIP Head has a one piece marble sole, a curved two door cherry vanity and a glass vessel style sink mounted into a marble countertop floating on stainless pegs above the cherry vanity. The toilet is a Raritan Atlantis model. The stall shower has round multi panel doors that form a cylindrical shower. The fixture is wall mountable or handheld. There is both a light and an exhaust fan for the shower. Also in the Head are plenty of high gloss cherry joinery, four additional halogen mini spots, an opening stainless steel porthole and a mirrored overhead and side panel.

Guest Cabin

To port just aft of the VIP is the Guest Cabin. Entering from forward there are two single berths going aft. Each berth has four drawers below as well as a three drawer cherry nightstand

between. Above the nightstand is a 21" LG LCD TV. Above the outboard berth is an opening stainless steel porthole with a Duette shade. At the head of the berths are two cabinets accessing technical equipment associated with the Pilothouse. Forward of the outboard berth is a full size cedar lined auto lit hanging locker followed by the entrance to the en suite Head. Also in this cabin are two stereo speakers, four halogen mini spots, digital AC controls and a carpeted sole.

Guest Head

The Guest Head has a one piece marble sole, a curved two door cherry vanity and a glass vessel style sink mounted into a marble countertop floating on stainless pegs above the cherry vanity. The toilet is a Raritan Atlantis model. The stall shower has round multi panel doors that form a cylindrical shower. The fixture is wall mountable or handheld. There is both a light and an exhaust fan for the shower. Also in the Head are plenty of high gloss cherry joinery, four additional halogen mini spots, an opening stainless steel porthole and a mirrored overhead and side panel.

Master Cabin

The Master Cabin has a queen size island berth facing forward. Twin sconce lights are over the built in port and starboard nightstands with one drawer and one cabinet each. A cherry framed headboard has cross cut cherry paneling for a very attractive design. To port starting forward is a two door cedar lined auto lit hanging locker followed by a vanity with a lift up top with dressing mirror and lights and a hinged fold away stool. Next aft are six cherry drawers and a countertop above. Sliding Soji screens conceal two stainless steel opening portholes. Aft is the entrance to the His/Her Head. At the foot of the berth is a 31" LCD LG TV mounted on the forward bulkhead. Below is a bank of six storage drawers. Behind the entry door is the cabin's AV entertainment locker including a Yamaha AV/receiver, Sony Blue Ray player, an HD Direct TV receiver, a Panamax voltage regulator and an APC power conditioner with battery backup, all expertly mounted into a rack system. Like all TV's aboard one can select TV/plotter/radar/CCTV on the screen. Below are two more storage cabinets. To starboard is an auto lit cedar lined two door hanging locker followed by an upholstered settee with additional reading light above. Next aft is a chest of four drawers with a wood countertop above with sliding Soji screens above concealing two opening stainless steel portholes, matching that to port. Next aft is an entrance to the His/Her Head. Also in this cabin is a central vacuum outlet, digital AC controls, a five channel stereo speaker system, four overhead mini spots, two dedicated reading lights over the berth and a smoke alarm.

Master Cabin His/Her Heads

The starboard side Head has a clear glass vessel sink mounted above a black granite countertop. There are two curved front cabinet doors in the vanity below the sink, there are two additional cabinet doors and a drawer going aft. A bifold mirror panel above the sink opens to

reveal an opening stainless steel porthole. The aft bulkhead and overhead are mirrored. Inboard the clear enclosure to the Jacuzzi tub and shower opens outward giving access to the shared tub/shower with a three level shower fixture and a handheld wand. The portside Head has all the same features (sink, cabinets, portholes) plus a black Raritan Atlantis head. The tub/shower is also accessible from this side as well.

Foredeck

Teak laid decks over fiberglass Raised bulwarks w/fairleads for lines Varnished teak cap rail Stainless steel handrail above cap rail Quick Disconnect raw water wash down Quick Disconnect freshwater wash down DC powered Muir all chain windlass Chain stripper Up & down foot switches for windlass 80 Kg Bruce anchor Courtesy lights at deck level Sun pad w/removable cushions & cover Adjustable backrest at sun pad (3) Double arm windshield wipers & washers Black Textulene windshield cover Dual air trumpet horns ACR remote spotlight Hinged bulwark boarding door at port & starboard Pilothouse doors Sliding port & starboard Pilothouse doors 100 Amp shore cord inlet portside amidship Ample freeing ports on side deck Midships spring line cleats

Cockpit

Teak laid sole over fiberglass 7' Cockpit (6) Curved steps port & starboard to Aft Deck w/step lights Quick Disconnect freshwater wash down Quick Disconnect salt water wash down Fiberglass cabinet portside w/stainless steel sink under hinged top Hot & cold shower Heavy Duty stern cleats w/roller fairleads (ideal for towing) Large in deck storage well Watertight hinged door to crew/machinery space Built in live well w/viewing window Fiberglass cabinet starboard side w/wired remote controls incl. start/stop rudder angle indicator Deck level courtesy lights Hinged walk through transom door 2'8" Integral fiberglass swim platform w/(4) stainless steel hoop rails Tracey six step boarding ladder (Tide Ride style) (5) Stainless steel rod holders aft of Aft Deck seating rocket launcher style (2) Stainless steel rod holders Leaning post presently stored off boat

Fly Bridge

Nonskid fiberglass decks Radar arch w/Integral hardtop (6) Overhead lights in hardtop Three side enclosure w/(3) large snap up panels Centerline helm Sliding access door from below portside w/Sunbrella cover Port & starboard L shaped seating w/walk through center section, seats have removable cushions & Sunbrella covers, storage below Twin teak round tables in front of seats on s stainless steel bases w/Sunbrella cover (2) Pompanette Platinum Series helm chairs w/folding footrests (4) Poly Planar 10" speakers Opening overhead hatch in hardtop Deck level courtesy lights

Helm Equipment

Centerline stainless steel Destroyer wheel KEP 15" color monitor Furuno Nav Net 3 12" plotter/radar/depth monitor (2) Cat LCD engine monitors Icom 604 VHF w/DSC Main engine start/stop buttons Glendinning electronic engine controls Sidepower thruster w/joystick controls Robertson/Simrad AP 20 auto pilot Furuno FI 50 apparent wind indicator Furuno FI 50 digital depth/speed/log ACR RCL 100 searchlight control Remote panel for Naiad stabilizers Bennett trim tab controls Ritchie 5" magnetic compass

Hardtop Equipment

Hailer horn 6' Furuno radar scanner 4' Furuno radar scanner Aluminum arch to hold KVH Sat dome over radar (2) Quartz aft facing Boat Deck lights Skipper 150 Sat phone Sirius weather/music Sat antenna Furuno weather/wind antenna Furuno GPS antenna (2) VHF antennas Cell phone range extender antenna International Navigation lights

Boat Deck Equipment

Portside fiberglass cabinet w/Force 10 stainless steel grill under hinged fiberglass panel, (2) cabinets below for storage Starboard side fiberglass cabinets w/stainless steel sink under hinged fiberglass panel, (2) storage cabinets below includes a Magic Chef drink refrigerator Life ring w/strobe light EPIRB w/hydrostatic release Removable stainless steel hoop rails Steelhead Marine 2500 lb. davit Aluminum tender cradle AB 13 RIB tender w/50 HP Yamaha, console steering, depth gauge, battery w/canvas chaps & a full cover Removable Bimini top for tender Deck level courtesy lights Hinged hatch access to Aft Deck ladder Viking 6 person life raft chalked on deck Freezer w/canvas cover for extended voyages

Crew Cabin

Entered via a watertight door aft is the full beam Crew Cabin. To port is a double berth with a custom Tempurpedic mattress and two storage drawers below. At the foot of the berth is a 21" LG LCD TV, a Sony Blue Ray player and an HD Direct TV receiver. Furthest aft is a hanging locker. To port aft is a cabinet housing the main DC distribution panel, to starboard the main switchboard and AC distribution panel. To starboard is the Crew Galley with a stainless steel countertop, a stainless steel sink, a Norcold under counter refrigerator, three drawers and above the stainless steel countertop, a cabinet and an opening stainless steel porthole. Next forward is the access to the private Head with a stainless steel countertop and sink, mirrored medicine cabinet and Raritan Atlantic toilet. The stall shower is centerline behind a curtain and is also the access to the Engine Room. Above are stereo speakers, seven halogen mini spots and digital AC controls.

Engine Room

Air sep crankcase ventilation system Naiad 254 stabilizer system Dual Racor 1000 fuel filters w/vacuum gauges Fuel transfer pump & transfer system GFCI 110V outlets Full CAT gauge package for engines 6 Point Reverso oil change system Integral fiberglass mufflers Hard wrapped exhaust systems (4) Stainless steel handrails overhead ZF transmissions, BW 195A 2.4:1 ratio Fire alarm strobe Marine Air chiller system, (2) chillers Freshwater hose pump w/expansion tank Air compressor for household systems Five step stainless steel swim ladder Coolant recovery bottles for main engines Engine Room blowers Telephone (2) Stainless steel workbench over generators Protectowire fire system (new) Air conditioned Engine Room (8) Fluorescent overhead lights Underwater lights 3.5 Aquamet 22 HS prop shafts S&S 38" x 45" High Skew Series 5 blade Nibral propellers Head Hunter 220 volt water pump 24 Volt backup water pump Hynautic hydraulic steering Vickers V10F hydraulic pump for steering Village Marine XX GPD water maker Optional 488 gallon aft fuel tank

Electrical Equipment

12V/24V DC system 110V/220 Volt AC system Kilo Pak 20 KW generator, 2082 hrs. in sound shield Kilo Pak 20 KW generator, 2433 hrs. in sound shield (2) Kilo Pak remote start panels Newmar 20 amp battery charger Samlex 15 amp generator battery charger Toshiba soft starts for chillers Mastervolt Mass 24 volt 100 amp charger Mastervolt Mass 24 volt 100 amp charger Mastervolt Mass 24 volt 100 amp charger 100 Amp Charles iso boost transformer 240V 50/60 HZ (2) Group 27 batteries for generators 12 Volt electronics battery (2) 8D Batteries to start each engine 8D Thruster batteries 8D Windlass batteries

Remarks

MISS SHUGA has been owned by a knowledgeable yachtsman who recently has purchased a much larger yacht. Upon inspection it will be quite evident the yacht has received constant care and upgrades. Her Aft Deck, Cockpit and swim platform make her an ideal Florida/Bahamas cruising yacht. She offers three en suite cabins and a "real" Crew Suite that will satisfy both Captain and Owner. NOT FOR SALE TO US RESIDENTS WHILE IN US WATERS

Exclusions

While every effort was made to list all pertinent included equipment aboard MISS SHUGA, there are some personal belongings aboard. Prospective purchasers should assume any item not specifically mentioned herein will not convey at closing.

Исключения

При продаже яхты исключаются личные вещи владельца.

Отказ от ответственности

Компания предоставляет описание судна или яхты добросовестно, но не может гарантировать точность этой информации, а также не ручается за техническое состояние. Покупатель должен проинструктировать своих агентов или оценщиков исследовать представленную информацию более подробно, по собственному желанию. Продажа судна или яхты, изменение цены или снятие с продажи будет происходить без предварительного уведомления.

ФОТОГРАФИИ

Salon looking forward



Salon looking port



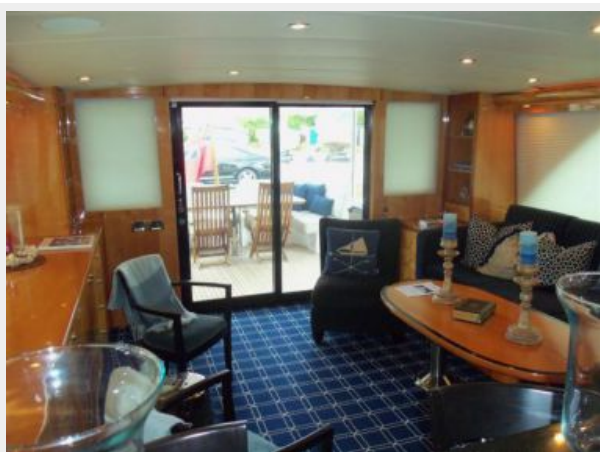
Salon bar area



Salon to Starboard



Salon looking aft



Galley looking aft



Galley with partition closed



Galley to starboard



Helm area



Pilothouse looking aft



Helm



Helm



Electronic adjusted Helm chair



Engine hours



Pilothouse storage



Companionway Steps



Companionway Laundry



VIP looking forward



VIP to port



VIP Head



Guest Cabin



Guest head



Guest head sink detail



Master looking aft



Master to starboard



Master looking forward



Portside master head



Centerline Master shower



Starboard side head



Bow lounge



Aft Deck Flybridge Ladder



Aft Deck to port



Aft Deck Table



Cockpit



Stern



Starboard side cockpit remote



Flybridge looking forward



Flybridge seating



Flybridge Helm



Helm detail



Boat Deck Grill



Boat Deck sink/fridge



Boat Deck



Crew Cabin looking foward



Crew Galley



Crew Head



Starboard engine



Port engine



Starboard generator



Fuel management system



Hardtop equipment



Heading out



КОНТАКТЫ

Андрей Шестаков (Andrey Shestakov) – ведущий яхтенный брокер отдела продаж яхт и судов компании Shestakov Yacht Sales Inc. Официальный представитель Shestakov Yacht Sales Inc. для русскоговорящих клиентов в центральном офисе компании в Майами/Форт Лодердейл/Флорида/США.

Контактная информация

Email: andrey@shestakovyachtsales.com

Web: shestakovyachtsales.com

Телефоны

Краснодарский край: **+7(918)465-66-44**

США, Майами, Флорида: **+1(954)274-4435**

Время работы

Понедельник – Суббота: **9:00 - 21:00**
EDT

Воскресенье: **Закрито**

Адрес



Harbour Towne Marina, 850 NE 3rd St,
STE 213, Dania, FL 33004