

ANNA 2 — HORIZON



Builder: HORIZON

Year Built: 2008

Model: Motor Yacht

Price: PRICE ON APPLICATION

Location: United States

LOA: 84' 0" (25.60m)

Beam: 20' 0" (6.10m)

Max Draft: 6' 6" (1.98m)

Cruise Speed: 17 Kts. (20 MPH)

Max Speed: 21 Kts. (24 MPH)

Our experienced yacht broker, Andrey Shestakov, will help you choose and buy a yacht that best suits your needs **Anna 2 — HORIZON** from our catalogue. Presently, at Shestakov Yacht Sales Inc., we have a wide variety of yachts available on our sale's list. We also work in close contact with all the big yacht manufacturers from all over the world.

If you would like to buy a yacht **Anna 2 — HORIZON** or would like help answering any questions concerning purchasing, selling or chartering a yacht, please call **+1(954)274-4435**

TABLE OF CONTENTS

TABLE OF CONTENTS	2
SPECIFICATIONS	5
Overview	5
Basic Information	5
Dimensions	5
Speed, Capacities and Weight	5
Accommodations	6
Hull and Deck Information	6
Engine Information	6
DETAILED INFORMATION	7
Vessel Walkthrough	7
Main Salon	7
Galley	8
Owner's Stateroom	8
Master Bath	8
VIP Stateroom Forward	8
VIP Stateroom Bath	9
Guest Stateroom Starboard	9
Guest Stateroom Port	9
Guest Head	9
Pilothouse	9
Flybridge	10
Aft Crew Quarters	10
Aft Deck	11
Aft Tender Garage	11
Engine Room	11
Deck Equipment	12
Electrical Equipment	12

Safety Equipment	12
Comments	12
Exclusions	13
Disclaimer	13
PHOTOS	14
Salon	14
Salon	14
Salon	14
Salon	14
Dining	14
Galley	14
Master Stateroom	15
Master Stateroom	15
Master Head	15
Stbd. Guest Stateroom	15
Port Guest Stateroom	15
Forward Stateroom	15
Forward Stateroom Head	16
Companionway	16
Day Head	16
Crew Quarters Aft	16
Wheelhouse	17
Wheelhouse	17
Flybridge	17
Flybridge	17
Flybridge	17
Flybridge	17
Stbd. Passageway	18
Aft Deck	18

Aft Deck	18
Bow	18
Stern	19
Bow	19
Stern Tender Garage	19
Engine Room	19
Engine Room	20
Layout	20
Layout	20
CONTACTS	21
Contact details	21
Telephones	21
Office hours	21
Address	21

SPECIFICATIONS

Overview

US DUTY PAID! Available for Sale to US Citizens and Residents in Fort Lauderdale, FL by appointment only.

“ANNA 2” is a “like new”, 2008 84’ Horizon “Elegance Yacht New Line” series, custom ordered and outfitted for her current owners with Drettmann Yachts of Bremen, Germany. This yacht has sophisticated styling, features, and quality normally only found on much larger Northern European built yachts. A few of her unique features are the aft tender garage (freeing up the expansive Fly Bridge entertaining area), Four luxurious stateroom layout plus crew aft, modern European décor with the use of natural woods and beautiful marble. “ANNA 2” has been lovingly maintained to exceptional standards with only very private family use. She has less than 600 original hours on her MAN Diesel engines, making this yacht a very rare and unique offering. “ANNA 2” is truly a “best buy”, and won’t last long. Inspection by appointment only.

Basic Information

Category: Motor Yacht

Model Year: 2008

Year Built: 2008

Country: United States

Dimensions

LOA: 84' 0" (25.60m)

Beam: 20' 0" (6.10m)

Max Draft: 6' 6" (1.98m)

Speed, Capacities and Weight

Cruise Speed: 17 Kts. (20 MPH)

Max Speed: 21 Kts. (24 MPH)

Water Capacity: 450 Gallons

Holding Tank: 73 Gallons

Fuel Capacity: 2250 Gallons

Accommodations

Total Cabins: 4

Sleeps: 8

Total Heads: 6

Crew Cabin: 1

Crew Berths: 2

Hull and Deck Information

Hull Material: Fiberglass

Deck Material: Teak over Fiberglass

Engine Information

Engines: 2

Manufacturer: MAN

Engine Type: Inboard

Fuel Type: Diesel

DETAILED INFORMATION

Vessel Walkthrough

One boards the vessel from the stern via the retractable hydraulic passarelle or the Port and Starboard side gates with the “Tide Ride Ladder” onto the beautiful teak-decked aft deck. This area features a custom Stainless Steel oval dining table and built-in bench seating for 6 to 8 people. Access to the large swim platform via the “European style” stairs with built-in gates. Aft is the large opening tender garage with storage for the tender and a full size wave runner. Access is also to the Crew Quarters and engine room.

One enters the Main Salon through the stainless steel and glass sliding bulkhead door. Aft to starboard is the built-in U-shaped wet bar, and built-in Crystal glassware. To port in the Main Salon is the custom white leather L-shaped sofa, with built-in storage, matching coffee table and stools. Forward to starboard is the built-in Entertainment Center complete with Pop-up TV, built-in Wine Cooler and storage. Forward to port is the open formal dining area featuring a Custom Stainless Steel and Glass dining table with seating for 8 people. Extensive built-in china cabinets for all cutlery and place settings.

Proceeding forward to port is the “Professional” style galley with marble counter tops and top European quality “Siemens” appliances. Side door with access to port walk around deck.

Forward is the “all weather” lower helm station with excellent visibility forward and full navigation and electronics and controls, settee seating and custom helm chair.

To starboard is the companion way stairs leading down to the “full beam” King size Master Stateroom with a spacious ensuite Master bath. Forward is the large queen size VIP ensuite stateroom. To port and Starboard are the twin guest staterooms just off the center line companionway.

Access to the Expansive Flying Bridge is from the lower helm inside or the aft deck. This area is ideal for entertaining with full size wet bar, BBQ, dining table for 8, fiberglass hard top, Jacuzzi-style Hot Tub, aft deck sun lounges, and full navigation controls.

Main Salon

- Stainless Steel sliding glass bulkhead door
- L-Shaped Wet Bar with Marble countertops, SS sink, Icemaker, bar refrigerator, custom crystal glass cabinet
- Hard wood flooring with throw rugs
- L-Shaped built-in White Leather Sofa with storage
- Entertainment center cabinet with pop-up TV and Wine Cooler
- Bose surround sound system

- Custom Stainless Glass dining table for 8
- Custom built-in China and cutlery cabinets
- Swarovski Crystal Curtains throughout
- “Starlight” overhead lighting
- Powder Room day head forward to starboard

Galley

- Custom white marble countertops
- Stainless Steel Sink
- All Siemens appliances: four-burner cook top, Oven, Dishwasher, Coffeemaker, Microwave oven
- Pantry storage

Owner's Stateroom

- Full beam Owner's stateroom with King Size bed
- Custom bedding and décor
- Walk in Hanging Closet
- Built-in flat screen LG TV with Entertainment system
- White leather L-Shaped settee
- Swarovski Crystal Curtains
- Built-in cabinets
- Oversized opening ports
- End tables
- Custom lighting

Master Bath

- Custom white marble tops with dual oversized sinks
- White marble flooring
- Heated towel racks
- Two person stall shower
- Custom vanity with special lighting

VIP Stateroom Forward

- Queen berth forward
- Custom bedspread and bedding
- Custom light fixtures

- Swarovski Curtains
- Drop down TV and Entertainment system
- Dual Port and Starboard opening Stainless Steel port lights
- Dual Hanging Lockers
- Night stands

VIP Stateroom Bath

- Custom White marble sink and vanity
- Custom lighting and fixtures
- White Marble flooring
- Separate Stall Shower
- Heated Towel racks

Guest Stateroom Starboard

- Double Bed
- Custom bed spreads and bedding
- Hanging Locker
- Two stainless steel opening ports
- Drop Down TV, and entertainment system

Guest Stateroom Port

- Double berth
- Custom bedding
- Drop down TV and Entertainment system
- Two opening Stainless Steel ports lights
- Hanging Locker

Guest Head

- White Marble Vanity and sink
- White Marble flooring
- Separate Stall Shower
- Heated towel rack

Pilothouse

- Full Helm controls and instrumentation

-
- American Bow and Stern Thrusters
 - Trac Digital Stabilizers
 - Raytheon Auto Pilot
 - Raytheon VHF Radio
 - Raytheon Dual GPS Plotters with Radar, and depth
 - Raytheon Depth and knot log, wind speed and direction
 - Dual Search Lights
 - LG Security cameras
 - Anchor Windless remote control
 - Remote for Generators
 - Three Windshield wipers
 - Boning Electronic Monitoring, tank tender, and alarm system
 - Intercom
 - Wemps Clock and Barometer
 - Kahlenburg Air Horn
 - Danforth compass
 - Recapo Helm Chair
 - U-shaped settee to port
 - NWF-Marine Weather
 - MRD 80

Flybridge

- Fiberglass Hard Top with opening “Sun Roof”
- L-Shaped bar to port with Stainless steel sink, refrigerator and ice maker
- Dual “Siemens” electric cooktops
- Port side U-shaped dining settee with Custom Stainless Steel and Glass dining table seats 10
- Full Flying Bridge controls with built-in navigation electronics
- Three Stainless and teak “European Style” sun lounges
- Jacuzzi style hot tub

Aft Crew Quarters

- Upper and Lower berths for crew
- Access aft from swim platform
- Crew head with separate stall shower
- White marble vanity and flooring
- TV and entertainment system
- Washer and Dryer

Aft Deck

- Full Teak Decks and Side Decks
- Optional aft boarding gates Port and Starboard
- Marquip "Tide Ride" boarding ladder
- Custom Stainless Steel and glass oval aft deck table
- Aft deck bench seating with custom cushions
- Port and Starboard "European Style" aft boarding gates
- Retractable hydraulic passarelle
- Varnished teak covering boards
- Oversized Stainless Steel railings, cleats and bollards
- Custom aft line handling lockers with Electric Capstans
- Aft Docking Controls (portside)
- Large teak covered swim platform
- Underwater lights
- Tender Garage from swim step
- Aft deck stereo speakers
- Oversized stairway to Flybridge
- Aft deck security cameras
- Custom built-in deck lighting
- Hot and Cold shower on swim step
- Stainless steel rub rails

Aft Tender Garage

- Large opening watertight transom door
- 2007 Zodiac HBI YL380 DL Tender with 40 HP four stroke Yamaha OB motor - HIN# FR-XDC506CDI607
- Full Size 2001 Yamaha XLT120 Wave Runner - HIN# YAMA3917A101

Engine Room

- Full Size Walk around
- Twin 1360 12 cylinder MAN diesel engines - Port 590 hrs. / Starboard 590 hrs.
- Twin ZF 2000A Transmissions
- Two 22KW Onan Generators (Port 595 hrs), (Starboard 495 hrs) total time
- Four Mastervolt battery chargers
- Marine Air Systems Chilled Water AC throughout
- Tides dripless stuffing box
- Four electric, two manual bilge pumps
- Metabo Air compressor
- AquaMatic Watermaker

- Track digital stabilizers

Deck Equipment

- Emergency engine room access port side decks
- Walk around teak side decks
- Port side galley access door
- Built-in Sun Pads on foredeck
- Bosun's lockers P & S foredeck
- Dual Maxwell "European Style" electric Anchor Windlasses
- Dual Stainless Steel Anchors with all chain roads
- Stainless Steel fender racks
- Starboard Wheelhouse side door
- Port and Starboard Fuel and water fills
- 8 x 12 Volt batteries (12 & 24 Volt system)
- Handheld remote docking controls

Electrical Equipment

- Inverter - Mastervolt
- Shore power inlet
- Generator - ONAN 22kw x2
- Electrical circuit: 220V

Safety Equipment

- Engine room HFC 227 Fire extinguishing system
- Arimar Neptune 8 person Life Raft
- 12 adult Lifejackets
- Life ring

Comments

US DUTY PAID! Available for Sale to US Citizens and Residents in Fort Lauderdale, FL by appointment only.

"ANNA 2" is a "like new", 2008 84' Horizon "Elegance Yacht New Line" series, custom ordered and outfitted for her current owners with Drettmann Yachts of Bremen, Germany. This yacht has sophisticated styling, features, and quality normally only found on much larger Northern European built yachts. A few of her unique features are the aft tender garage (freeing up the

expansive Fly Bridge entertaining area), Four luxurious stateroom layout plus crew aft, modern European décor with the use of natural woods and beautiful marble. "ANNA 2" has been lovingly maintained to exceptional standards with only very private family use. She has less than 600 original hours on her MAN Diesel engines, making this yacht a very rare and unique offering. "ANNA 2" is truly a "best buy", and won't last long. Inspection by appointment only. "ANNA 2" was hauled out, bottom painted, prop-speed applied, new cutlass bearings - 10/2014

Exclusions

Owner's personal belongings.

Disclaimer

The Company offers the details of this vessel or yacht in good faith but cannot guarantee or warrant the accuracy of this information nor warrant the condition of the vessel. A buyer should instruct his representatives, agents, or his surveyors, to investigate such details as the buyer desires validated. This vessel or yacht is offered subject to prior sale, price change, or withdrawal without notice.

PHOTOS

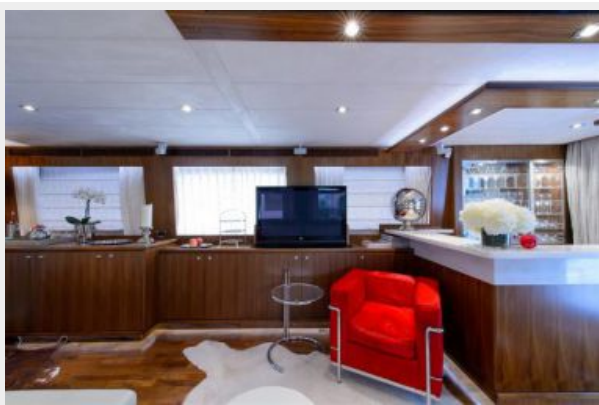
Salon



Salon



Salon



Salon



Dining



Galley



Master Stateroom



Master Stateroom



Master Head



Stbd. Guest Stateroom



Port Guest Stateroom



Forward Stateroom



Forward Stateroom Head



Companionway



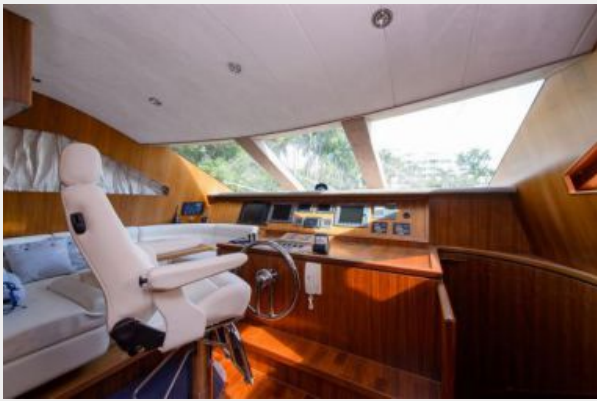
Day Head



Crew Quarters Aft



Wheelhouse



Wheelhouse



Flybridge



Flybridge



Flybridge



Flybridge



Stbd. Passageway



Aft Deck



Aft Deck



Bow



Bow



Stern



Stern Tender Garage



Engine Room



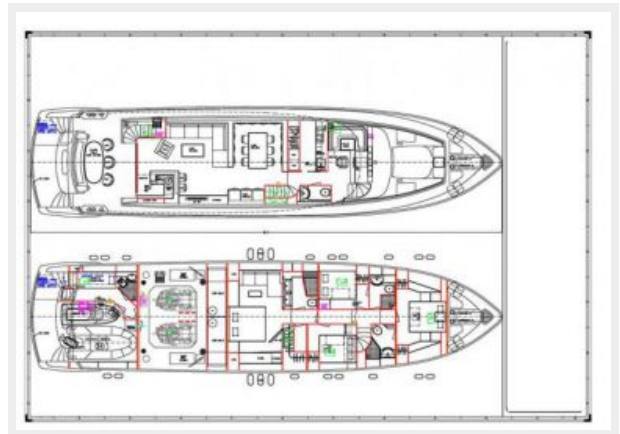
Engine Room



Layout



Layout



CONTACTS

Andrey Shestakov, leading yacht broker of the sales department of Shestakov Yacht Sales Inc. Shestakov Yacht Sales Inc., the official representative of the Miami/Fort Lauderdale FL headquarters.

Contact details

Email: andrey@shestakovyachtsales.com

Web: shestakovyachtsales.com/en/

Telephones

USA: +1(954)274-4435

Office hours

Monday – Saturday: **9:00 - 21:00** EDT

Sunday: **closed**

Address



Harbour Towne Marina, 850 NE 3rd St,
STE 213, Dania, FL 33004