

ANNA 2 — HORIZON



Судостроитель: HORIZON

Год постройки: 2008

Модель: Моторная яхта

Цена: **ЦЕНА ЯХТЫ ПО ЗАПРОСУ**

Местонахождение: United States

Длина общая: 84' 0" (25.60m)

Ширина: 20' 0" (6.10m)

Макс. осадка: 6' 6" (1.98m)

Крейс. скорость: 17 Kts. (20 MPH)

Макс. скорость: 21 Kts. (24 MPH)

Купить Anna 2 — HORIZON а также выбрать подходящую вам яхту из нашего каталога яхт вам поможет опытный яхтенный брокер Андрей Шестаков. На сегодняшний день компания Shestakov Yacht Sales Inc. имеет большое количество яхт в собственном списке продаж, а также тесно сотрудничает со всеми крупными яхтенными производителями по всему миру.

Для того чтобы купить яхту Anna 2 — HORIZON а также проконсультироваться по любому вопросу связанному с покупкой, продажей, чартером яхт позвоните по телефону **+7(918)465-66-44**.

ОГЛАВЛЕНИЕ

ОГЛАВЛЕНИЕ	2
ХАРАКТЕРИСТИКИ	5
Обзор	5
Основная информация	5
Размеры	5
Скорость, вместимость и масса	5
Размещение	6
Корпус и палуба	6
Информация о двигателе	6
ПОДРОБНОЕ ОПИСАНИЕ	7
Vessel Walkthrough	7
Main Salon	7
Galley	8
Owner's Stateroom	8
Master Bath	8
VIP Stateroom Forward	8
VIP Stateroom Bath	9
Guest Stateroom Starboard	9
Guest Stateroom Port	9
Guest Head	9
Pilothouse	9
Flybridge	10
Aft Crew Quarters	10
Aft Deck	11
Aft Tender Garage	11
Engine Room	11
Deck Equipment	12
Electrical Equipment	12

Safety Equipment	12
Comments	12
Исключения	13
Отказ от ответственности	13
ФОТОГРАФИИ	14
Salon	14
Salon	14
Salon	14
Salon	14
Dining	14
Galley	14
Master Stateroom	15
Master Stateroom	15
Master Head	15
Stbd. Guest Stateroom	15
Port Guest Stateroom	15
Forward Stateroom	15
Forward Stateroom Head	16
Companionway	16
Day Head	16
Crew Quarters Aft	16
Wheelhouse	17
Wheelhouse	17
Flybridge	17
Flybridge	17
Flybridge	17
Flybridge	17
Stbd. Passageway	18
Aft Deck	18

Aft Deck	18
Bow	18
Stern	19
Bow	19
Stern Tender Garage	19
Engine Room	19
Engine Room	20
Layout	20
Layout	20
КОНТАКТЫ	21
Контактная информация	21
Телефоны	21
Время работы	21
Адрес	21

ХАРАКТЕРИСТИКИ

Обзор

US DUTY PAID! Available for Sale to US Citizens and Residents in Fort Lauderdale, FL by appointment only.

“ANNA 2” is a “like new”, 2008 84’ Horizon “Elegance Yacht New Line” series, custom ordered and outfitted for her current owners with Drettmann Yachts of Bremen, Germany. This yacht has sophisticated styling, features, and quality normally only found on much larger Northern European built yachts. A few of her unique features are the aft tender garage (freeing up the expansive Fly Bridge entertaining area), Four luxurious stateroom layout plus crew aft, modern European décor with the use of natural woods and beautiful marble. “ANNA 2” has been lovingly maintained to exceptional standards with only very private family use. She has less than 600 original hours on her MAN Diesel engines, making this yacht a very rare and unique offering. “ANNA 2” is truly a “best buy”, and won’t last long. Inspection by appointment only.

Основная информация

Тип судна: Моторная яхта

Модельный год: 2008

Год постройки: 2008

Страна: United States

Размеры

Длина общая: 84' 0" (25.60m)

Ширина: 20' 0" (6.10m)

Макс. осадка: 6' 6" (1.98m)

Скорость, вместимость и масса

Крейс. скорость: 17 Kts. (20 MPH)

Макс. скорость: 21 Kts. (24 MPH)

Вместимость воды: 450 Gallons

Вместимость сточного бака: 73 Gallons

Объем топливного бака: 2250 Gallons

Размещение

Всего кают: 4

Спальные места: 8

Всего ком. состава: 6

Каюты экипажа: 1

Койки экипажа: 2

Корпус и палуба

Материал корпуса: Fiberglass

Материал палубы: Teak over Fiberglass

Информация о двигателе

Двигатели: 2

Производитель: MAN

Тип двигателя: Inboard

Тип топлива: Diesel

ПОДРОБНОЕ ОПИСАНИЕ

Vessel Walkthrough

One boards the vessel from the stern via the retractable hydraulic passarelle or the Port and Starboard side gates with the “Tide Ride Ladder” onto the beautiful teak-decked aft deck. This area features a custom Stainless Steel oval dining table and built-in bench seating for 6 to 8 people. Access to the large swim platform via the “European style” stairs with built-in gates. Aft is the large opening tender garage with storage for the tender and a full size wave runner. Access is also to the Crew Quarters and engine room.

One enters the Main Salon through the stainless steel and glass sliding bulkhead door. Aft to starboard is the built-in U-shaped wet bar, and built-in Crystal glassware. To port in the Main Salon is the custom white leather L-shaped sofa, with built-in storage, matching coffee table and stools. Forward to starboard is the built-in Entertainment Center complete with Pop-up TV, built-in Wine Cooler and storage. Forward to port is the open formal dining area featuring a Custom Stainless Steel and Glass dining table with seating for 8 people. Extensive built-in china cabinets for all cutlery and place settings.

Proceeding forward to port is the “Professional” style galley with marble counter tops and top European quality “Siemens” appliances. Side door with access to port walk around deck.

Forward is the “all weather” lower helm station with excellent visibility forward and full navigation and electronics and controls, settee seating and custom helm chair.

To starboard is the companion way stairs leading down to the “full beam” King size Master Stateroom with a spacious ensuite Master bath. Forward is the large queen size VIP ensuite stateroom. To port and Starboard are the twin guest staterooms just off the center line companionway.

Access to the Expansive Flying Bridge is from the lower helm inside or the aft deck. This area is ideal for entertaining with full size wet bar, BBQ, dining table for 8, fiberglass hard top, Jacuzzi-style Hot Tub, aft deck sun lounges, and full navigation controls.

Main Salon

- Stainless Steel sliding glass bulkhead door
- L-Shaped Wet Bar with Marble countertops, SS sink, Icemaker, bar refrigerator, custom crystal glass cabinet
- Hard wood flooring with throw rugs
- L-Shaped built-in White Leather Sofa with storage
- Entertainment center cabinet with pop-up TV and Wine Cooler
- Bose surround sound system

- Custom Stainless Glass dining table for 8
- Custom built-in China and cutlery cabinets
- Swarovski Crystal Curtains throughout
- “Starlight” overhead lighting
- Powder Room day head forward to starboard

Galley

- Custom white marble countertops
- Stainless Steel Sink
- All Siemens appliances: four-burner cook top, Oven, Dishwasher, Coffeemaker, Microwave oven
- Pantry storage

Owner's Stateroom

- Full beam Owner's stateroom with King Size bed
- Custom bedding and décor
- Walk in Hanging Closet
- Built-in flat screen LG TV with Entertainment system
- White leather L-Shaped settee
- Swarovski Crystal Curtains
- Built-in cabinets
- Oversized opening ports
- End tables
- Custom lighting

Master Bath

- Custom white marble tops with dual oversized sinks
- White marble flooring
- Heated towel racks
- Two person stall shower
- Custom vanity with special lighting

VIP Stateroom Forward

- Queen berth forward
- Custom bedspread and bedding
- Custom light fixtures

- Swarovski Curtains
- Drop down TV and Entertainment system
- Dual Port and Starboard opening Stainless Steel port lights
- Dual Hanging Lockers
- Night stands

VIP Stateroom Bath

- Custom White marble sink and vanity
- Custom lighting and fixtures
- White Marble flooring
- Separate Stall Shower
- Heated Towel racks

Guest Stateroom Starboard

- Double Bed
- Custom bed spreads and bedding
- Hanging Locker
- Two stainless steel opening ports
- Drop Down TV, and entertainment system

Guest Stateroom Port

- Double berth
- Custom bedding
- Drop down TV and Entertainment system
- Two opening Stainless Steel ports lights
- Hanging Locker

Guest Head

- White Marble Vanity and sink
- White Marble flooring
- Separate Stall Shower
- Heated towel rack

Pilothouse

- Full Helm controls and instrumentation

- Full helm controls and instrumentation
- American Bow and Stern Thrusters
- Trac Digital Stabilizers
- Raytheon Auto Pilot
- Raytheon VHF Radio
- Raytheon Dual GPS Plotters with Radar, and depth
- Raytheon Depth and knot log, wind speed and direction
- Dual Search Lights
- LG Security cameras
- Anchor Windless remote control
- Remote for Generators
- Three Windshield wipers
- Boning Electronic Monitoring, tank tender, and alarm system
- Intercom
- Wemps Clock and Barometer
- Kahlenburg Air Horn
- Danforth compass
- Recapo Helm Chair
- U-shaped settee to port
- NWF-Marine Weather
- MRD 80

Flybridge

- Fiberglass Hard Top with opening “Sun Roof”
- L-Shaped bar to port with Stainless steel sink, refrigerator and ice maker
- Dual “Siemens” electric cooktops
- Port side U-shaped dining settee with Custom Stainless Steel and Glass dining table seats 10
- Full Flying Bridge controls with built-in navigation electronics
- Three Stainless and teak “European Style” sun lounges
- Jacuzzi style hot tub

Aft Crew Quarters

- Upper and Lower berths for crew
- Access aft from swim platform
- Crew head with separate stall shower
- White marble vanity and flooring
- TV and entertainment system
- Washer and Dryer

Aft Deck

- Full Teak Decks and Side Decks
- Optional aft boarding gates Port and Starboard
- Marquip “Tide Ride” boarding ladder
- Custom Stainless Steel and glass oval aft deck table
- Aft deck bench seating with custom cushions
- Port and Starboard “European Style” aft boarding gates
- Retractable hydraulic passarelle
- Varnished teak covering boards
- Oversized Stainless Steel railings, cleats and bollards
- Custom aft line handling lockers with Electric Capstans
- Aft Docking Controls (portside)
- Large teak covered swim platform
- Underwater lights
- Tender Garage from swim step
- Aft deck stereo speakers
- Oversized stairway to Flybridge
- Aft deck security cameras
- Custom built-in deck lighting
- Hot and Cold shower on swim step
- Stainless steel rub rails

Aft Tender Garage

- Large opening watertight transom door
- 2007 Zodiac HBI YL380 DL Tender with 40 HP four stroke Yamaha OB motor - HIN# FR-XDC506CDI607
- Full Size 2001 Yamaha XLT120 Wave Runner - HIN# YAMA3917A101

Engine Room

- Full Size Walk around
- Twin 1360 12 cylinder MAN diesel engines - Port 590 hrs. / Starboard 590 hrs.
- Twin ZF 2000A Transmissions
- Two 22KW Onan Generators (Port 595 hrs), (Starboard 495 hrs) total time
- Four Mastervolt battery chargers
- Marine Air Systems Chilled Water AC throughout
- Tides driplless stuffing box
- Four electric, two manual bilge pumps
- Metabo Air compressor
- AquaMatic Watermaker

- Track digital stabilizers

Deck Equipment

- Emergency engine room access port side decks
- Walk around teak side decks
- Port side galley access door
- Built-in Sun Pads on foredeck
- Bosun's lockers P & S foredeck
- Dual Maxwell "European Style" electric Anchor Windlasses
- Dual Stainless Steel Anchors with all chain roads
- Stainless Steel fender racks
- Starboard Wheelhouse side door
- Port and Starboard Fuel and water fills
- 8 x 12 Volt batteries (12 & 24 Volt system)
- Handheld remote docking controls

Electrical Equipment

- Inverter - Mastervolt
- Shore power inlet
- Generator - ONAN 22kw x2
- Electrical circuit: 220V

Safety Equipment

- Engine room HFC 227 Fire extinguishing system
- Arimar Neptune 8 person Life Raft
- 12 adult Lifejackets
- Life ring

Comments

US DUTY PAID! Available for Sale to US Citizens and Residents in Fort Lauderdale, FL by appointment only.

"ANNA 2" is a "like new", 2008 84' Horizon "Elegance Yacht New Line" series, custom ordered and outfitted for her current owners with Drettmann Yachts of Bremen, Germany. This yacht has sophisticated styling, features, and quality normally only found on much larger Northern European built yachts. A few of her unique features are the aft tender garage (freeing up the

expansive Fly Bridge entertaining area), Four luxurious stateroom layout plus crew aft, modern European décor with the use of natural woods and beautiful marble. "ANNA 2" has been lovingly maintained to exceptional standards with only very private family use. She has less than 600 original hours on her MAN Diesel engines, making this yacht a very rare and unique offering. "ANNA 2" is truly a "best buy", and won't last long. Inspection by appointment only. "ANNA 2" was hauled out, bottom painted, prop-speed applied, new cutlass bearings - 10/2014

Исключения

При продаже яхты исключаются личные вещи владельца.

Отказ от ответственности

Компания предоставляет описание судна или яхты добросовестно, но не может гарантировать точность этой информации, а также не ручается за техническое состояние. Покупатель должен проинструктировать своих агентов или оценщиков исследовать представленную информацию более подробно, по собственному желанию. Продажа судна или яхты, изменение цены или снятие с продажи будет происходить без предварительного уведомления.

ФОТОГРАФИИ

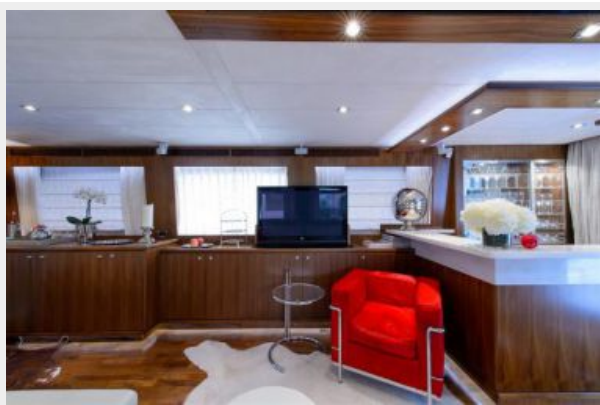
Salon



Salon



Salon



Salon



Dining



Galley



Master Stateroom



Master Stateroom



Master Head



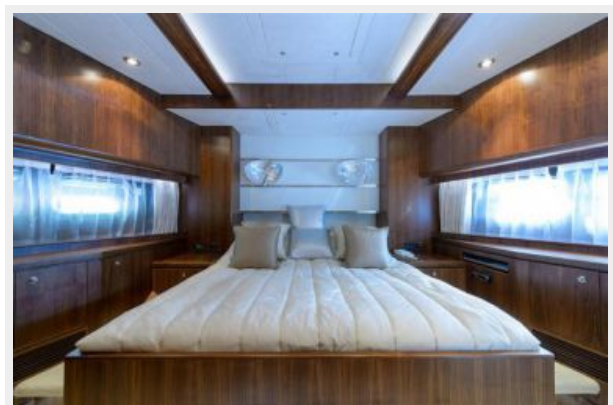
Stbd. Guest Stateroom



Port Guest Stateroom



Forward Stateroom



Forward Stateroom Head



Companionway



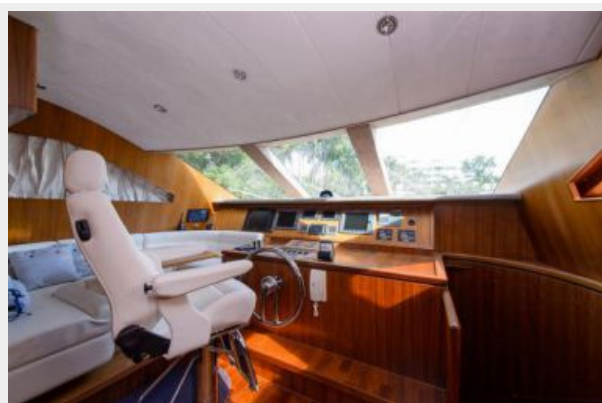
Day Head



Crew Quarters Aft



Wheelhouse



Wheelhouse



Flybridge



Flybridge



Flybridge



Flybridge



Stbd. Passageway



Aft Deck



Aft Deck



Bow



Bow



Stern



Stern Tender Garage



Engine Room



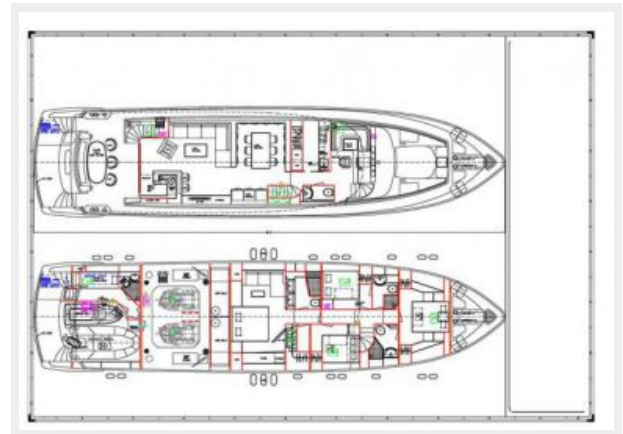
Engine Room



Layout



Layout



КОНТАКТЫ

Андрей Шестаков (Andrey Shestakov) – ведущий яхтенный брокер отдела продаж яхт и судов компании Shestakov Yacht Sales Inc. Официальный представитель Shestakov Yacht Sales Inc. для русскоговорящих клиентов в центральном офисе компании в Майами/Форт Лодердейл/Флорида/США.

Контактная информация

Email: andrey@shestakovyachtsales.com

Web: shestakovyachtsales.com

Телефоны

Краснодарский край: **+7(918)465-66-44**

США, Майами, Флорида: **+1(954)274-4435**

Время работы

Понедельник – Суббота: **9:00 - 21:00**
EDT

Воскресенье: **Закрето**

Адрес



Harbour Towne Marina, 850 NE 3rd St,
STE 213, Dania, FL 33004