

OUR TRADE — VIKING



Builder: VIKING

Year Built: 2000

Model: Sport Fisherman

Price: PRICE ON APPLICATION

Location: United States

LOA: 65' 0" (19.81m)

Beam: 18' 9" (5.72m)

Max Draft: 6' 1" (1.85m)

Our experienced yacht broker, Andrey Shestakov, will help you choose and buy a yacht that best suits your needs **OUR TRADE — VIKING** from our catalogue. Presently, at Shestakov Yacht Sales Inc., we have a wide variety of yachts available on our sale's list. We also work in close contact with all the big yacht manufacturers from all over the world.

If you would like to buy a yacht **OUR TRADE — VIKING** or would like help answering any questions concerning purchasing, selling or chartering a yacht, please call **+1(954)274-4435**

TABLE OF CONTENTS

| | |
|------------------------------|----|
| TABLE OF CONTENTS | 2 |
| SPECIFICATIONS | 5 |
| Overview | 5 |
| Basic Information | 5 |
| Dimensions | 5 |
| Speed, Capacities and Weight | 5 |
| Accommodations | 5 |
| Hull and Deck Information | 6 |
| Engine Information | 6 |
| DETAILED INFORMATION | 7 |
| Upgrades | 7 |
| Salon | 7 |
| Galley and Dinette | 7 |
| Master Stateroom | 8 |
| Master Stateroom Head | 8 |
| Forward VIP Stateroom | 8 |
| Forward VIP Head | 9 |
| Port Aft Stateroom | 9 |
| Port Aft Stateroom Head | 9 |
| Starboard Stateroom | 9 |
| Starboard Head | 10 |
| Companionway | 10 |
| Lazarette | 10 |
| Flybridge | 10 |
| Tower | 11 |
| Electronics | 11 |
| Cockpit | 12 |
| Engine Room | 12 |

| | |
|-----------------------|----|
| Hull and Deck | 13 |
| Bottom and Hull | 13 |
| Exclusions | 14 |
| Disclaimer | 14 |
| PHOTOS | 15 |
| Salon | 15 |
| Salon | 15 |
| Salon | 15 |
| Salon | 15 |
| Salon Seating | 15 |
| Salon | 15 |
| Galley | 16 |
| Galley | 16 |
| Dinette | 16 |
| Companionway | 16 |
| Companionway | 16 |
| Master Stateroom | 16 |
| Master Stateroom | 17 |
| Master Stateroom | 17 |
| Master Hanging Locker | 17 |
| Master Ensuite Head | 17 |
| Master Ensuite Head | 17 |
| Master Ensuite Head | 17 |
| Forward VIP Stateroom | 18 |
| Forward VIP Head | 18 |
| Washer and Dryer | 18 |
| Crew Stateroom | 18 |
| Crew Stateroom | 18 |
| Crew Stateroom | 18 |

| | |
|-----------------------|----|
| Crew Ensuite Head | 19 |
| Crew Stateroom | 19 |
| Starboard Stateroom | 19 |
| Starboard Stateroom | 19 |
| Starboard Head | 20 |
| Starboard Head | 20 |
| Flybridge Washdown | 20 |
| Helm | 20 |
| Helm | 20 |
| Flybridge Seating | 20 |
| Flybridge Seating | 21 |
| New Prop Speed 9/14 | 21 |
| New Prop Speed 9/14 | 21 |
| New Bottom Paint 9/14 | 21 |
| New Bottom Paint 9/14 | 21 |
| New Prop Speed 9/14 | 21 |
| Profile | 22 |
| Out of the water | 22 |
| CONTACTS | 23 |
| Contact details | 23 |
| Telephones | 23 |
| Office hours | 23 |
| Address | 23 |

SPECIFICATIONS

Overview

Our Trade 2000 65 Viking Convertible has been full time captain and crew maintained. This Viking's condition and upgrades make her show like new with a paint job in 2012, updated electronics, new bridge enclosure, and much more. No expenses were spared to keep this vessel in top-notch condition and up to date with today's technologies. With a recent survey and services done, our trade is turn-key ready to go for her new owner to enjoy a carefree boating experience.

Preliminary listing. Additional photos coming soon.

Basic Information

Category: Sport Fisherman

Model Year: 2000

Year Built: 2000

Country: United States

Dimensions

LOA: 65' 0" (19.81m)

Beam: 18' 9" (5.72m)

Max Draft: 6' 1" (1.85m)

Speed, Capacities and Weight

Displacement: 100000 Pounds

Water Capacity: 360 Gallons

Fuel Capacity: 1800 Gallons

Accommodations

Total Cabins: 4

Total Heads: 4

Hull and Deck Information

Hull Material: Fiberglass

Engine Information

Engines: 2

Manufacturer: MTU

Model: 16V2000

Engine Type: Inboard

Fuel Type: Diesel

DETAILED INFORMATION

Upgrades

- NEW bottom paint September 2014
- NEW prop speed September 2014
- Full paint job in 2012
- W-4 completed in 2013
- NEW Electronics in 2011
- NEW port 21.5 Kw generator in 2013
- NEW Cruisair for bait freezer unit 2012
- NEW air handlers in main salon
- NEW Kenmore ice machine in salon in 2012
- New Samsung LCD TV on upgraded gear bracket in main salon in 2013
- NEW Subzero unit in galley in 2014
- NEW Eskimo ice chipper in 2014
- NEW Charles ISO booster (port side) in 2014
- NEW Isinglass enclosure in 2012

Salon

- NEW Kenmore ice machine in salon in 2012
- NEW air handlers in main salon
- New Samsung LCD TV on upgraded gear bracket in main salon in 2013
- Carpeted sole with carpet runner
- Recessed overhead dimming lights
- 110-volt A.C. and 24-volt D.C. electrical panel
- Indirect lighting
- U-shaped sofa with storage below
- Toshiba DVD player
- DirecTV control box
- Kenmore Ellite ice maker
- Liquor locker with storage, starboard

Galley and Dinette

- NEW Subzero unit in galley in 2014
- Dinette with U-shaped benchseat and storage underneath
- Storage drawers
- A.C. and D.C. electrical panel with freshwater gauge
- Sharp Carousel microwave oven

- Water tank level gauge
- 3-burner electric Kenyon stovetop
- Fluorescent counter lighting
- Four Sub-Zero refrigerator drawers
- Two Sub-Zero freezer drawers
- Kenmore Dishwasher

Master Stateroom

- Carpeted sole
- Island berth with indirect light
- Storage underneath berth
- Nightstand and bureau
- Two hanging lockers
- Cruisair air conditioning control
- Sharp television
- Sony DVD player
- Ensuite head

Master Stateroom Head

- Mirrored overhead
- 110-volt GFI outlet
- Exhaust fan
- Vacuflush head
- Vanity with molded sink
- Two medicine lockers with mirrored doors
- Shower stall with door and bench seat
- Mirrored locker with shelves

Forward VIP Stateroom

- Double island berth
- Lift up berth for storage
- Storage drawers
- Indirect lighting
- DirecTV control box
- Magnavox DVD player
- Sharp television
- Hanging lockers
- Cruisair air conditioning controls

- Ensuite head

Forward VIP Head

- Mirrored overhead
- 110-volt outlet
- Vacuflush head
- Vanity with molded sink and hot/cold water faucet
- Medicine cabinet with two mirrored
- Exhaust blower
- Shower stall with bi-fold doors
- Hand-held showerhead on hose with wall mount

Port Aft Stateroom

- Overhead hatch with screen
- Upper and lower single berths
- Storage below lower bunk
- Air conditioning control panel
- Sharp television
- Lockers with mirrored doors
- Hanging locker
- Ensuite head

Port Aft Stateroom Head

- Entrance from port aft stateroom
- Teak and holly sole
- Vacuflush head
- Vanity with molded sink
- Hot/cold faucet
- Storage under sink
- 110-volt GFI outlet
- Mirrored medicine locker
- Exhaust blower
- Corner shower stall with bi-fold doors
- Hand-held showerhead on hose

Starboard Stateroom

- Sharp television
- Upper and lower single bunks
- Hanging locker
- Direct TV television control box
- Entrance to head

Starboard Head

- Entrance via forward companionway and starboard stateroom
- Teak and holly sole
- Vacuflush head
- Vanity with molded sink
- Hot/cold faucet
- Storage underneath sink
- 110-volt GFI outlet
- Mirrored medicine locker
- Exhaust blower
- Corner shower stall with bi-fold doors

Companionway

- Carpeted sole with carpet
- Storage locker
- Kenmore washer and dryer

Lazzarette

- Two electric/automatic bilge pumps
- High water alarm
- Macerator pump for bait well
- Sealand sump discharge pump
- Polyethylene 5-gallon sump
- Trim tab reservoir and control unit
- Simrad rudder feedback sensor to autopilot
- Two hydraulic steering actuators

Flybridge

- NEW Isinglass enclosure in 2012
- NEW Electronics in 2011

- Two NEW MTU displays in 2011
- NEW freezer compressor in 2013
- Overhead lights in hardtop
- Garmin GPS Map 4208
- Two ICOM IC-M504 VHF radios
- Furuno NavNet
- Raymarine ST70
- Clarion stereo
- Furuno FCV1150 depth display
- Raymarine ST70
- Garmin GPS M7212
- Emergency back up engine controls
- SEA 2250 SSB radio
- 12-volt DC outlet
- SimradAP22 autopilot
- Bennett trim tab controls
- Fireboy system discharge alarm/engine shutdown system
- Starboard companion chair
- Helm chair
- Bow thruster control
- L-shaped benchseat, port, with cushions and storage under
- Built-in cabinetry, forward centerline, with built-in refrigerator and freezer
- Six aft rail mounted rod holders

Tower

- Forward floodlights
- Port and starboard floodlights
- Two aft facing spreader lights
- Tower control station with: steering wheel, two MTU displays, Robertson AP22 autopilot, Clarion stereo, Icom IC-M422 VHF
- Anchor and forward navigation light
- Ritchie magnetic compass
- Two speakers
- Cover for control station
- Upholstered bench seat

Electronics

- NEW Electronics in 2011
- Radar: Furuno
- VHF: Two Icom-M504 and Icom 422

- SATCOM: KVH Tracphone
- SATTV: KVH TracVision
- Autopilot: Simrad AP22
- GPS: Furuno NavNet / Garmin GPS 4208 / Garmin 7212
- Plotter Program: Nobeltec
- Depthsounder: Furuno NavNet / Furuno FCV 1150 /Raymarine ST70 digital display
- Compass: Two Simrad electronic and Ritchie magnetic

Cockpit

- NEW Cruisair for bait freezer unit 2012
- Teak deck
- Rod holders, two port and two starboard
- Refrigerated drink box under step
- Transom live well (no bait pump)
- Freshwater wash-down
- Seawater wash-down
- Eskimo ice maker output
- Transom door
- Shore/telephone/television inlet
- Tackle center
- Bait prep area
- Deep freezer
- Storage drawers
- Two overhead lights in overhang
- Ladder to bridge
- Fighting chair
- Livewell in deck

Engine Room

- W-4 completed in 2013
- NEW port 21.5 Kw generator with (21 hours) in 2013
- NEW Eskimo ice chipper in 2014
- NEW Charles ISO booster (port side) in 2014
- 27.5-kw Onan generator with (2,254 hours)
- Electric/automatic bilge pump, aft
- High water alarm
- Racor fuel filter for each generator
- Four main engine Racor fuel filters
- Two 110-volt dual-lamp fluorescent lights with safety lenses
- Three Cruisair air conditioning compressors

- Two cockpit freezer compressors
- Two circulating fans
- Sea Recovery watermaker
- Two D.C. electric blowers
- Four 12-volt 4D batteries in covered boxes, inboard of starboard engine
- Four 12-volt 4D batteries in covered boxes, inboard of port engine 30-gallon hot water heater
- Electric oil change pumps for engines and generators with lube oil reservoir tank
- Eskimo ice machine
- Charles iso-boost shore power transformer
- Dolphin 24-volt 50-amp battery charger
- 110-volt freshwater pump with accumulator tanks and filter
- Hydraulic steering reservoir with pressure gauge
- Raw water washdown pump

Hull and Deck

- Full paint job in 2012
- 85-lb. Fortress aluminum anchor with approximately 15' of chain and approximately 200' of 5/8" nylon rode
- Maxwell 3500 electric windlass with two deck switches
- Quick 1,000-lb capacity electric/hydraulic
- Bow pulpit with anchor chute
- Anchor roller
- Three deck hatches
- Aluminum bow rail
- Access to rope locker with freshwater wash-down
- Tender chocks
- Tender davit with stainless steel running rigging
- Grab rail above and below salon windows, port and starboard
- Rupp outriggers
- Quick Lift Davit 1,000-lb. capacity

Bottom and Hull

- NEW bottom paint September 2014
- NEW prop speed September 2014
- Double-cylinder trim tabs
- Two transom steps
- Bow thruster
- Painted Light blue Alex Seal
- Engine room vents

Exclusions

Owner's personal belongings.

Disclaimer

The Company offers the details of this vessel or yacht in good faith but cannot guarantee or warrant the accuracy of this information nor warrant the condition of the vessel. A buyer should instruct his representatives, agents, or his surveyors, to investigate such details as the buyer desires validated. This vessel or yacht is offered subject to prior sale, price change, or withdrawal without notice.

PHOTOS

Salon



Salon



Salon



Salon



Salon Seating



Salon



Galley



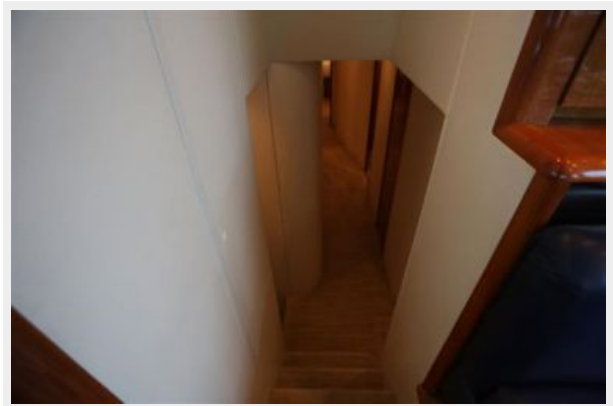
Galley



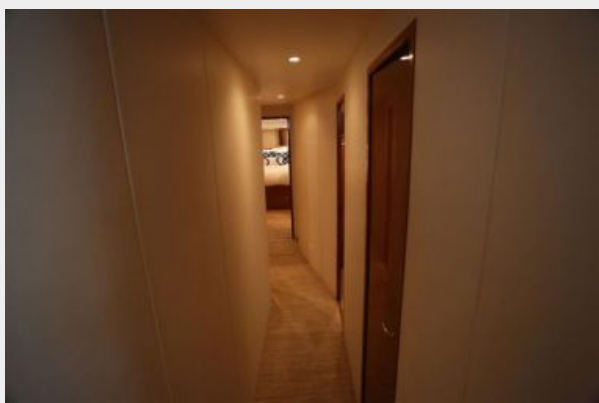
Dinette



Companionway



Companionway



Master Stateroom



Master Stateroom



Master Stateroom



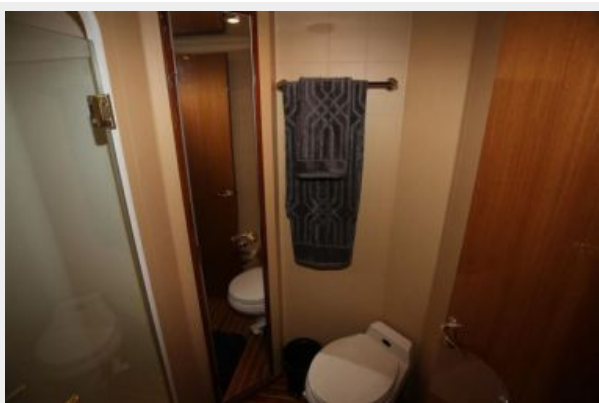
Master Hanging Locker



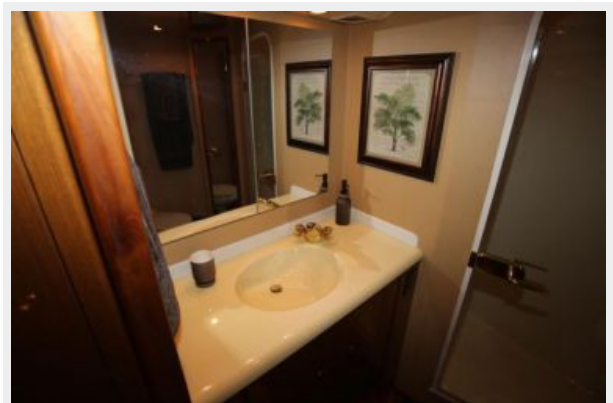
Master Ensuite Head



Master Ensuite Head



Master Ensuite Head



Forward VIP Stateroom



Forward VIP Head



Washer and Dryer



Crew Stateroom



Crew Stateroom



Crew Stateroom



Crew Stateroom



Crew Ensuite Head



Starboard Stateroom



Starboard Stateroom



Starboard Head



Starboard Head



Flybridge Washdown



Helm



Helm



Flybridge Seating



Flybridge Seating



New Prop Speed 9/14



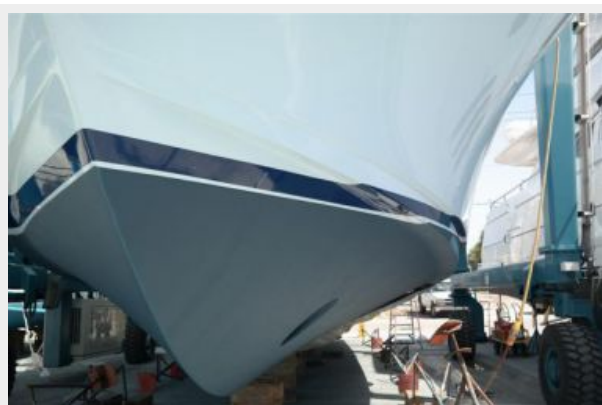
New Prop Speed 9/14



New Bottom Paint 9/14



New Bottom Paint 9/14



New Prop Speed 9/14



Profile



Out of the water



CONTACTS

Andrey Shestakov, leading yacht broker of the sales department of Shestakov Yacht Sales Inc. Shestakov Yacht Sales Inc., the official representative of the Miami/Fort Lauderdale FL headquarters.

Contact details

Email: andrey@shestakovyachtsales.com

Web: shestakovyachtsales.com/en/

Telephones

USA: +1(954)274-4435

Office hours

Monday – Saturday: **9:00 - 21:00** EDT

Sunday: **closed**

Address



Harbour Towne Marina, 850 NE 3rd St,
STE 213, Dania, FL 33004