

OUR TRADE — VIKING



Судостроитель: VIKING

Год постройки: 2000

Модель: Катер для спортивной рыбалки

Цена: **ЦЕНА ЯХТЫ ПО ЗАПРОСУ**

Местонахождение: United States

Длина общая: 65' 0" (19.81m)

Ширина: 18' 9" (5.72m)

Макс. осадка: 6' 1" (1.85m)

Купить **OUR TRADE — VIKING** а также выбрать подходящую вам яхту из нашего каталога яхт вам поможет опытный яхтенный брокер Андрей Шестаков. На сегодняшний день компания **Shestakov Yacht Sales Inc.** имеет большое количество яхт в собственном списке продаж, а также тесно сотрудничает со всеми крупными яхтенными производителями по всему миру.

Для того чтобы купить яхту **OUR TRADE — VIKING** а также проконсультироваться по любому вопросу связанному с покупкой, продажей, чартером яхт позвоните по телефону **+7(918)465-66-44**.

ОГЛАВЛЕНИЕ

ОГЛАВЛЕНИЕ	2
ХАРАКТЕРИСТИКИ	5
Обзор	5
Основная информация	5
Размеры	5
Скорость, вместимость и масса	5
Размещение	5
Корпус и палуба	6
Информация о двигателе	6
ПОДРОБНОЕ ОПИСАНИЕ	7
Upgrades	7
Salon	7
Galley and Dinette	7
Master Stateroom	8
Master Stateroom Head	8
Forward VIP Stateroom	8
Forward VIP Head	9
Port Aft Stateroom	9
Port Aft Stateroom Head	9
Starboard Stateroom	9
Starboard Head	10
Companionway	10
Lazarette	10
Flybridge	10
Tower	11
Electronics	11
Cockpit	12
Engine Room	12

Hull and Deck	13
Bottom and Hull	13
Исключения	14
Отказ от ответственности	14
ФОТОГРАФИИ	15
Salon	15
Salon	15
Salon	15
Salon	15
Salon Seating	15
Salon	15
Galley	16
Galley	16
Dinette	16
Companionway	16
Companionway	16
Master Stateroom	16
Master Stateroom	17
Master Stateroom	17
Master Hanging Locker	17
Master Ensuite Head	17
Master Ensuite Head	17
Master Ensuite Head	17
Forward VIP Stateroom	18
Forward VIP Head	18
Washer and Dryer	18
Crew Stateroom	18
Crew Stateroom	18
Crew Stateroom	18

Crew Ensuite Head	19
Crew Stateroom	19
Starboard Stateroom	19
Starboard Stateroom	19
Starboard Head	20
Starboard Head	20
Flybridge Washdown	20
Helm	20
Helm	20
Flybridge Seating	20
Flybridge Seating	21
New Prop Speed 9/14	21
New Prop Speed 9/14	21
New Bottom Paint 9/14	21
New Bottom Paint 9/14	21
New Prop Speed 9/14	21
Profile	22
Out of the water	22
КОНТАКТЫ	23
Контактная информация	23
Телефоны	23
Время работы	23
Адрес	23

ХАРАКТЕРИСТИКИ

Обзор

Our Trade 2000 65 Viking Convertible has been full time captain and crew maintained. This Viking's condition and upgrades make her show like new with a paint job in 2012, updated electronics, new bridge enclosure, and much more. No expenses were spared to keep this vessel in top-notch condition and up to date with today's technologies. With a recent survey and services done, our trade is turn-key ready to go for her new owner to enjoy a carefree boating experience.

Preliminary listing. Additional photos coming soon.

Основная информация

Тип судна: Катер для спортивной рыбалки

Модельный год: 2000

Год постройки: 2000

Страна: United States

Размеры

Длина общая: 65' 0" (19.81m)

Ширина: 18' 9" (5.72m)

Макс. осадка: 6' 1" (1.85m)

Скорость, вместимость и масса

Водоизмещение: 100000 Pounds

Вместимость воды: 360 Gallons

Объем топливного бака: 1800 Gallons

Размещение

Всего кают: 4

Всего ком. состава: 4

Корпус и палуба

Материал корпуса: Fiberglass

Информация о двигателе

Двигатели: 2

Производитель: MTU

Модель: 16V2000

Тип двигателя: Inboard

Тип топлива: Diesel

ПОДРОБНОЕ ОПИСАНИЕ

Upgrades

- NEW bottom paint September 2014
- NEW prop speed September 2014
- Full paint job in 2012
- W-4 completed in 2013
- NEW Electronics in 2011
- NEW port 21.5 Kw generator in 2013
- NEW Cruisair for bait freezer unit 2012
- NEW air handlers in main salon
- NEW Kenmore ice machine in salon in 2012
- New Samsung LCD TV on upgraded gear bracket in main salon in 2013
- NEW Subzero unit in galley in 2014
- NEW Eskimo ice chipper in 2014
- NEW Charles ISO booster (port side) in 2014
- NEW Isinglass enclosure in 2012

Salon

- NEW Kenmore ice machine in salon in 2012
- NEW air handlers in main salon
- New Samsung LCD TV on upgraded gear bracket in main salon in 2013
- Carpeted sole with carpet runner
- Recessed overhead dimming lights
- 110-volt A.C. and 24-volt D.C. electrical panel
- Indirect lighting
- U-shaped sofa with storage below
- Toshiba DVD player
- DirecTV control box
- Kenmore Ellite ice maker
- Liquor locker with storage, starboard

Galley and Dinette

- NEW Subzero unit in galley in 2014
- Dinette with U-shaped benchseat and storage underneath
- Storage drawers
- A.C. and D.C. electrical panel with freshwater gauge
- Sharp Carousel microwave oven

- Water tank level gauge
- 3-burner electric Kenyon stovetop
- Fluorescent counter lighting
- Four Sub-Zero refrigerator drawers
- Two Sub-Zero freezer drawers
- Kenmore Dishwasher

Master Stateroom

- Carpeted sole
- Island berth with indirect light
- Storage underneath berth
- Nightstand and bureau
- Two hanging lockers
- Cruisair air conditioning control
- Sharp television
- Sony DVD player
- Ensuite head

Master Stateroom Head

- Mirrored overhead
- 110-volt GFI outlet
- Exhaust fan
- Vacuflush head
- Vanity with molded sink
- Two medicine lockers with mirrored doors
- Shower stall with door and bench seat
- Mirrored locker with shelves

Forward VIP Stateroom

- Double island berth
- Lift up berth for storage
- Storage drawers
- Indirect lighting
- DirecTV control box
- Magnavox DVD player
- Sharp television
- Hanging lockers
- Cruisair air conditioning controls

- Ensuite head

Forward VIP Head

- Mirrored overhead
- 110-volt outlet
- Vacuflush head
- Vanity with molded sink and hot/cold water faucet
- Medicine cabinet with two mirrored
- Exhaust blower
- Shower stall with bi-fold doors
- Hand-held showerhead on hose with wall mount

Port Aft Stateroom

- Overhead hatch with screen
- Upper and lower single berths
- Storage below lower bunk
- Air conditioning control panel
- Sharp television
- Lockers with mirrored doors
- Hanging locker
- Ensuite head

Port Aft Stateroom Head

- Entrance from port aft stateroom
- Teak and holly sole
- Vacuflush head
- Vanity with molded sink
- Hot/cold faucet
- Storage under sink
- 110-volt GFI outlet
- Mirrored medicine locker
- Exhaust blower
- Corner shower stall with bi-fold doors
- Hand-held showerhead on hose

Starboard Stateroom

- Sharp television
- Upper and lower single bunks
- Hanging locker
- Direct TV television control box
- Entrance to head

Starboard Head

- Entrance via forward companionway and starboard stateroom
- Teak and holly sole
- Vacuflush head
- Vanity with molded sink
- Hot/cold faucet
- Storage underneath sink
- 110-volt GFI outlet
- Mirrored medicine locker
- Exhaust blower
- Corner shower stall with bi-fold doors

Companionway

- Carpeted sole with carpet
- Storage locker
- Kenmore washer and dryer

Lazzarette

- Two electric/automatic bilge pumps
- High water alarm
- Macerator pump for bait well
- Sealand sump discharge pump
- Polyethylene 5-gallon sump
- Trim tab reservoir and control unit
- Simrad rudder feedback sensor to autopilot
- Two hydraulic steering actuators

Flybridge

- NEW Isinglass enclosure in 2012
- NEW Electronics in 2011

- Two NEW MTU displays in 2011
- NEW freezer compressor in 2013
- Overhead lights in hardtop
- Garmin GPS Map 4208
- Two ICOM IC-M504 VHF radios
- Furuno NavNet
- Raymarine ST70
- Clarion stereo
- Furuno FCV1150 depth display
- Raymarine ST70
- Garmin GPS M7212
- Emergency back up engine controls
- SEA 2250 SSB radio
- 12-volt DC outlet
- SimradAP22 autopilot
- Bennett trim tab controls
- Fireboy system discharge alarm/engine shutdown system
- Starboard companion chair
- Helm chair
- Bow thruster control
- L-shaped benchseat, port, with cushions and storage under
- Built-in cabinetry, forward centerline, with built-in refrigerator and freezer
- Six aft rail mounted rod holders

Tower

- Forward floodlights
- Port and starboard floodlights
- Two aft facing spreader lights
- Tower control station with: steering wheel, two MTU displays, Robertson AP22 autopilot, Clarion stereo, Icom IC-M422 VHF
- Anchor and forward navigation light
- Ritchie magnetic compass
- Two speakers
- Cover for control station
- Upholstered bench seat

Electronics

- NEW Electronics in 2011
- Radar: Furuno
- VHF: Two Icom-M504 and Icom 422

- SATCOM: KVH Tracphone
- SATTV: KVH TracVision
- Autopilot: Simrad AP22
- GPS: Furuno NavNet / Garmin GPS 4208 / Garmin 7212
- Plotter Program: Nobeltec
- Depthsounder: Furuno NavNet / Furuno FCV 1150 /Raymarine ST70 digital display
- Compass: Two Simrad electronic and Ritchie magnetic

Cockpit

- NEW Cruisair for bait freezer unit 2012
- Teak deck
- Rod holders, two port and two starboard
- Refrigerated drink box under step
- Transom live well (no bait pump)
- Freshwater wash-down
- Seawater wash-down
- Eskimo ice maker output
- Transom door
- Shore/telephone/television inlet
- Tackle center
- Bait prep area
- Deep freezer
- Storage drawers
- Two overhead lights in overhang
- Ladder to bridge
- Fighting chair
- Livewell in deck

Engine Room

- W-4 completed in 2013
- NEW port 21.5 Kw generator with (21 hours) in 2013
- NEW Eskimo ice chipper in 2014
- NEW Charles ISO booster (port side) in 2014
- 27.5-kw Onan generator with (2,254 hours)
- Electric/automatic bilge pump, aft
- High water alarm
- Racor fuel filter for each generator
- Four main engine Racor fuel filters
- Two 110-volt dual-lamp fluorescent lights with safety lenses
- Three Cruisair air conditioning compressors

- Two cockpit freezer compressors
- Two circulating fans
- Sea Recovery watermaker
- Two D.C. electric blowers
- Four 12-volt 4D batteries in covered boxes, inboard of starboard engine
- Four 12-volt 4D batteries in covered boxes, inboard of port engine 30-gallon hot water heater
- Electric oil change pumps for engines and generators with lube oil reservoir tank
- Eskimo ice machine
- Charles iso-boost shore power transformer
- Dolphin 24-volt 50-amp battery charger
- 110-volt freshwater pump with accumulator tanks and filter
- Hydraulic steering reservoir with pressure gauge
- Raw water washdown pump

Hull and Deck

- Full paint job in 2012
- 85-lb. Fortress aluminum anchor with approximately 15' of chain and approximately 200' of 5/8" nylon rode
- Maxwell 3500 electric windlass with two deck switches
- Quick 1,000-lb capacity electric/hydraulic
- Bow pulpit with anchor chute
- Anchor roller
- Three deck hatches
- Aluminum bow rail
- Access to rope locker with freshwater wash-down
- Tender chocks
- Tender davit with stainless steel running rigging
- Grab rail above and below salon windows, port and starboard
- Rupp outriggers
- Quick Lift Davit 1,000-lb. capacity

Bottom and Hull

- NEW bottom paint September 2014
- NEW prop speed September 2014
- Double-cylinder trim tabs
- Two transom steps
- Bow thruster
- Painted Light blue Alex Seal
- Engine room vents

Исключения

При продаже яхты исключаются личные вещи владельца.

Отказ от ответственности

Компания предоставляет описание судна или яхты добросовестно, но не может гарантировать точность этой информации, а также не ручается за техническое состояние. Покупатель должен проинструктировать своих агентов или оценщиков исследовать представленную информацию более подробно, по собственному желанию. Продажа судна или яхты, изменение цены или снятие с продажи будет происходить без предварительного уведомления.

ФОТОГРАФИИ

Salon



Salon



Salon



Salon



Salon Seating



Salon



Galley



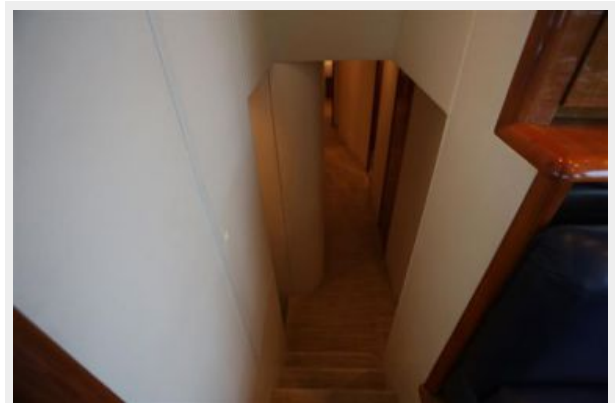
Galley



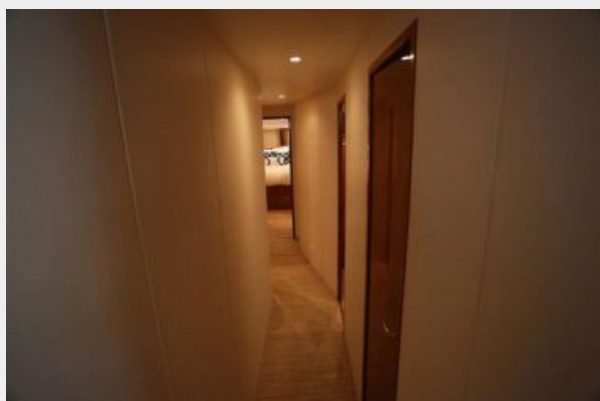
Dinette



Companionway



Companionway



Master Stateroom



Master Stateroom



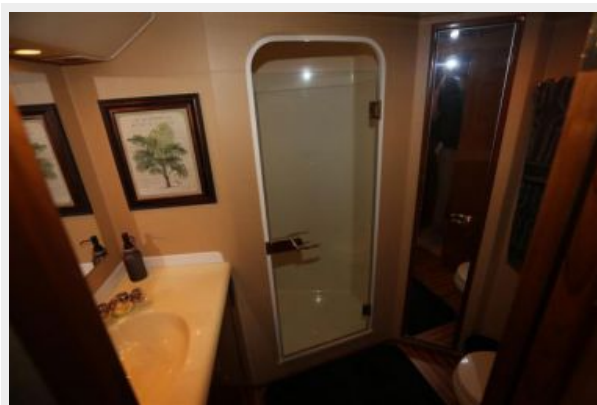
Master Stateroom



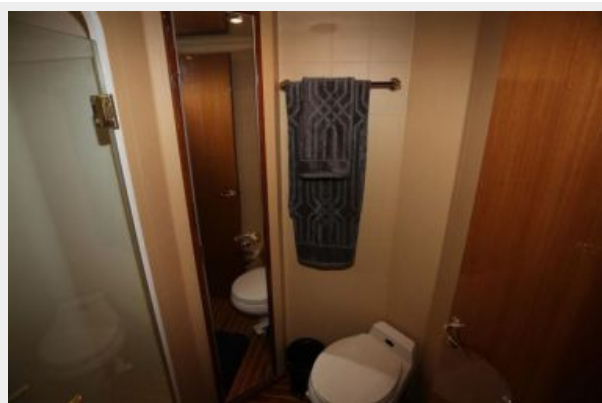
Master Hanging Locker



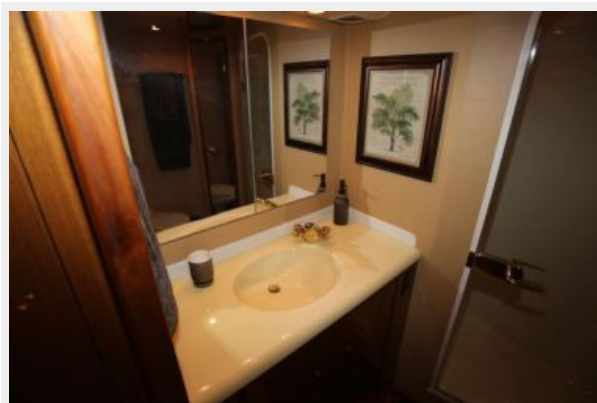
Master Ensuite Head



Master Ensuite Head



Master Ensuite Head



Forward VIP Stateroom



Forward VIP Head



Washer and Dryer



Crew Stateroom



Crew Stateroom



Crew Stateroom



Crew Stateroom



Crew Ensuite Head



Starboard Stateroom



Starboard Stateroom



Starboard Head



Starboard Head



Flybridge Washdown



Helm



Helm



Flybridge Seating



Flybridge Seating



New Prop Speed 9/14



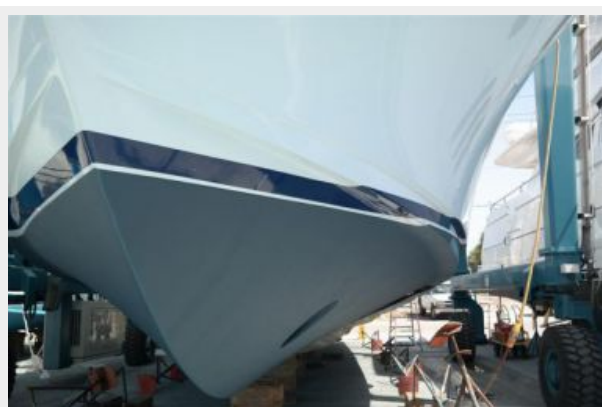
New Prop Speed 9/14



New Bottom Paint 9/14



New Bottom Paint 9/14



New Prop Speed 9/14



Profile



Out of the water



КОНТАКТЫ

Андрей Шестаков (Andrey Shestakov) – ведущий яхтенный брокер отдела продаж яхт и судов компании Shestakov Yacht Sales Inc. Официальный представитель Shestakov Yacht Sales Inc. для русскоговорящих клиентов в центральном офисе компании в Майами/Форт Лодердейл/Флорида/США.

Контактная информация

Email: andrey@shestakovyachtsales.com

Web: shestakovyachtsales.com

Телефоны

Краснодарский край: **+7(918)465-66-44**

США, Майами, Флорида: **+1(954)274-4435**

Время работы

Понедельник – Суббота: **9:00 - 21:00**
EDT

Воскресенье: **Закрито**

Адрес



Harbour Towne Marina, 850 NE 3rd St,
STE 213, Dania, FL 33004