

CHAMPAGNE LADY — BERTRAM



Builder: BERTRAM

Year Built: 2006

Model: Sport Fisherman

Price: PRICE ON APPLICATION

Location: United States

LOA: 67' 0" (20.42m)

Beam: 16' 6" (5.03m)

Cruise Speed: 30 Kts. (35 MPH)

Max Speed: 37 Kts. (43 MPH)

Our experienced yacht broker, Andrey Shestakov, will help you choose and buy a yacht that best suits your needs **Champagne Lady — BERTRAM** from our catalogue. Presently, at Shestakov Yacht Sales Inc., we have a wide variety of yachts available on our sale's list. We also work in close contact with all the big yacht manufacturers from all over the world.

If you would like to buy a yacht **Champagne Lady — BERTRAM** or would like help answering any questions concerning purchasing, selling or chartering a yacht, please call **+1(954)274-4435**

TABLE OF CONTENTS

TABLE OF CONTENTS	2
SPECIFICATIONS	3
Overview	3
Basic Information	3
Dimensions	3
Speed, Capacities and Weight	3
Accommodations	3
Hull and Deck Information	3
Engine Information	4
DETAILED INFORMATION	5
Vessel Walkthrough	5
Remarks	7
Exclusions	7
Disclaimer	7
PHOTOS	8
CONTACTS	18
Contact details	18
Telephones	18
Office hours	18
Address	18

SPECIFICATIONS

Overview

The “Champagne Lady” has a full time captain and is truly an exceptionally clean open bridge sport fisherman that has been maintained with an “open checkbook”. She has the look and feel of a much larger yacht. With a 30 knot cruise speed, MTU engines, 2000 gallons of fuel and 4 stateroom layout she is ready to travel the world. You must see her to appreciate how immaculate she really is!

Basic Information

Category: Sport Fisherman

Model Year: 2006

Year Built: 2006

Country: United States

Dimensions

LOA: 67' 0" (20.42m)

Beam: 16' 6" (5.03m)

Speed, Capacities and Weight

Cruise Speed: 30 Kts. (35 MPH)

Max Speed: 37 Kts. (43 MPH)

Water Capacity: 350 Gallons

Holding Tank: 82 Gallons

Fuel Capacity: 2008 Gallons

Accommodations

Total Cabins: 4

Hull and Deck Information

Hull Material: Fiberglass

Engine Information

Manufacturer: MTU

Model: 16V2000

Engine Type: Inboard

Fuel Type: Diesel

DETAILED INFORMATION

Vessel Walkthrough

Exterior Features

- Custom Full Tower by Baush American Marine
- 3 Sided EZ2CY Enclosure
- Armorcote premium ISO_NPG Gelcoat
- Custom Awlgrip Ice Blue Hull w/ Flag Blue Boot Top w/ White Boot Top Stripe
- 24v Windlass 2000w w/ Deck Foot Controls
- Heavy Duty White Rub Rail w/ Stainless Banding
- Bow Pulpit w/ Teak w/ Stainless anchor Chute
- Stainless All Chain Anchor Rode
- Polished Rail Package by Pipewelders
- Underwater Lights (3)
- Winslow (6) Man Life Raft

Fly Bridge

- Custom Teak Flybridge Sole w/ 36" Teak & Holly Compass Rose Inlay
- Custom Removable Murray Bros Hi-Gloss Triangular Teak Table w/ Specified Grain w/ Holly
- Inlay w/ Hi-Lo stainless Pedestal w/ Fore & Aft Slide & Custom Deck Plate w/ Cover
- Custom Hi Gloss Teak Lids on Flybridge Cabinets
- Custom Teak Helm Pod w/ Electronic Side Mount Engine Controls
- Custom Cushions and Pillows
- 24V & 12v Distribution Panels
- (2) Murray Bros Hi Gloss Teak Helm Chairs
- Remote Windlass Control
- Stereo / CD w/ Watertight Speakers
- Molded Fiberglass Staircase w/ Teak Step Pads to Bridge from Cockpit

Electronics

- Furuno 1953CBB Black Box Radar w/ 6' Open Array
- Furuno BBFF3 Network Sounder
- Furuno MU-155c (15") Display
- Garmin 7208
- Garmin 7215
- Simrad AP 25 Autopilot
- Simrad AP 25 Head (Tower)
- Furuno RD 30 Digital Depthfinder, Speed & Seawater Temperature
- Furuno GP 1710C Remote NavNet Display (Tower)

- ICOM M 602 VHF w/ Antenna
- ICOM HM-127B Command Mic (Tower)
- KVH Tracvision w/ RCA DSS Receiver w/ Channel Plus Amplifier
- KVH 252 SAT Phone
- Panasonic KX-TA624 Phone System w/ Panasonic KK-T7730B Phone
- Ocean Systems 2020 Deck Scan Camera - Engine Room

Cockpit

- Mezzanine w/ Custom Cushions & Pillows
- Air Conditioned Mezzanine Area
- Custom Teak Cockpit Sole
- Custom Teak Covering Boards
- Cockpit Coaming Padding
- Murray Bros Large Hi Gloss Teak Fighting Chair w/ Offset Pedestal, Short Backrest w/Rocket Launcher & Rigging Tray
- Prep Center w/ Engine Room Access w/ Dual Freezer, Storage Lockers, Tackle Drawers & sink w/ Cutting Board Sink
- Rod Closet Built into Stb. Aft Bulkhead w/ Double Bottom Rod Stand
- 30" x 19" x 1" Starboard Rigging / Cutting Board
- Removable Fishbox w/ Macerator Pump
- Transom Baitwell
- Salt & Freshwater Wash downs
- Flush Mount Rupp Rod Holders
- (2) Pr. Soft-Lock Pole Holders under Covering Boards
- (4) Pr. Soft-Lock Pole Holders under Mezzanine
- Glendinning Cable Master
- Molded Boarding Steps, P. & Stb.
- Cobalt Blue Courtesy Lights

Engine Room

Yearly bottom maintenance completed 12/2013 with all bottom and running gear soda blasted and freshly painted. New cutlass bearings installed as well.

- Trolling Valves
- (2) 23 KW Kohler Generators
- (2) 50 amp Converters
- Galvanic Isolators & Transformers
- Emergency Bilge Water Pump
- Headhunter Mack V Freshwater Pumps
- 1400 gal/day SRC 1400GPF Water maker
- Eskimo Ice Maker
- PVC Engine Room Decking
- (2) Pr. DU-BRO 4' Tournament Tracks w/ 16 DU-Bro Adjustable Tournament Rod

Holders

Interior

- (4) Stateroom Layout
- Full Beam master w/ Walk-In Locker
- Cedar Lined Hanging Lockers
- (4) Heads w/ Elongated Toilet Bowls & Mirrored Ceilings
- Hi Gloss Cherry Cabinetry Throughout
- Granite Countertops Throughout Salon
- Upgraded Ultra Leather Sofa
- Whisper Wall System
- Custom Fabrics Throughout
- Custom Carpet Throughout
- Carpet Runners
- Premium Audio / Visual Package

Remarks

The “Champagne Lady” has a full time captain and is truly an exceptionally clean open bridge sport fisherman that has been maintained with an “open checkbook”. She has the look and feel of a much larger yacht. With a 30 knot cruise speed, MTU engines, 2000 gallons of fuel and 4 stateroom layout she is ready to travel the world. You must see her to appreciate how immaculate she really is!

Exclusions

Owner's personal belongings.

Disclaimer

The Company offers the details of this vessel or yacht in good faith but cannot guarantee or warrant the accuracy of this information nor warrant the condition of the vessel. A buyer should instruct his representatives, agents, or his surveyors, to investigate such details as the buyer desires validated. This vessel or yacht is offered subject to prior sale, price change, or withdrawal without notice.

PHOTOS







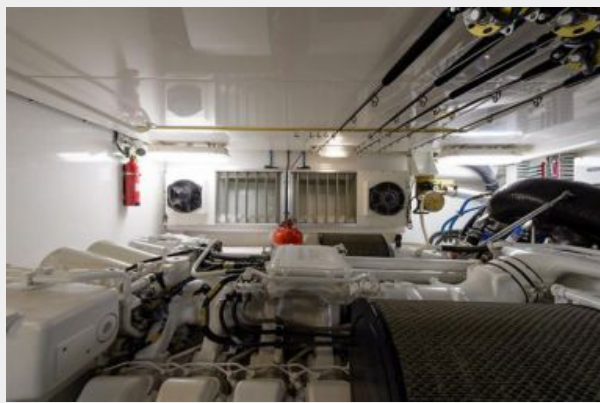














CONTACTS

Andrey Shestakov, leading yacht broker of the sales department of Shestakov Yacht Sales Inc. Shestakov Yacht Sales Inc., the official representative of the Miami/Fort Lauderdale FL headquarters.

Contact details

Email: andrey@shestakovyachtsales.com

Web: shestakovyachtsales.com/en/

Telephones

USA: +1(954)274-4435

Office hours

Monday – Saturday: **9:00 - 21:00** EDT

Sunday: **closed**

Address



Harbour Towne Marina, 850 NE 3rd St,
STE 213, Dania, FL 33004