

# BOSTON WHALER OUTRAGE 26 — BOSTON WHALER



**Builder:** BOSTON WHALER

**Year Built:** 1999

**Model:** Cruiser

**Price:** PRICE ON APPLICATION

**Location:** Dutch Caribbean

**LOA:** 27' 1" (8.25m)

**Beam:** 8' 6" (2.59m)

**Min Draft:** 1' 3" (0.38m)

**Max Draft:** 3' 0" (0.91m)

**Cruise Speed:** 18.248501082 Kts. (21 MPH)

**Max Speed:** 30.41416847 Kts. (35 MPH)

Our experienced yacht broker, Andrey Shestakov, will help you choose and buy a yacht that best suits your needs **Boston Whaler Outrage 26 — BOSTON WHALER** from our catalogue. Presently, at Shestakov Yacht Sales Inc., we have a wide variety of yachts available on our sale's list. We also work in close contact with all the big yacht manufacturers from all over the world.

If you would like to buy a yacht **Boston Whaler Outrage 26 — BOSTON WHALER** or would like help answering any questions concerning purchasing, selling or chartering a yacht, please call **+1(954)274-4435**

---

# TABLE OF CONTENTS

---

TABLE OF CONTENTS	2
SPECIFICATIONS	3
Overview	3
Basic Information	3
Dimensions	3
Speed, Capacities and Weight	3
Accommodations	3
Hull and Deck Information	4
Engine Information	4
DETAILED INFORMATION	5
Features	5
Exclusions	5
Disclaimer	5
PHOTOS	6
Boston Whaler for sale	6
Boston Whaler for sale	6
Boston Whaler for sale	6
CONTACTS	9
Contact details	9
Telephones	9
Office hours	9
Address	9

---

# SPECIFICATIONS

---

## Overview

---

Radar GPS VHF Sound system Live well Deck shower Leaning post Outriggers Rod holders .....  
.....

## Basic Information

---

**Category:** Cruiser

**Sub Category:** Center Console

**Model Year:** 1999

**Year Built:** 1999

**Refit Year:** 2014

**Refit Type:** Engine

**Country:** Dutch Caribbean

**Registration #:** NC\*\*

**Vessel Top:** 2353

## Dimensions

---

**LOA:** 27' 1" (8.25m)

**LOD:** 25' 7" (7.80m)

**Beam:** 8' 6" (2.59m)

**Min Draft:** 1' 3" (0.38m)

**Max Draft:** 3' 0" (0.91m)

**MFG Length:** 26' 0" (7.92m)

## Speed, Capacities and Weight

---

**Cruise Speed:** 18.248501082 Kts. (21 MPH) **Max Speed:** 30.41416847 Kts. (35 MPH)

**Displacement:** 3700 Pounds

**Fuel Capacity:** 200 Gallons

## Accommodations

---

**Total Heads:** 1

---

## Hull and Deck Information

---

**Hull Material:** Fiberglass

**Deck Material:** Fiberglass

**Hull Configuration:** Deep Vee

**Hull Color:** White

**Hull Finish:** Plastic

**Hull Designer:** Boston Whaler

---

## Engine Information

---

**Engines:** 1

**Manufacturer:** Yamaha

**Model:** F225T

**Engine Type:** Outboard

**Fuel Type:** Gas

---

# DETAILED INFORMATION

---

## Features

---

Four stroke Yamaha 225 Outboard, 2013, new wiring, new batteries, new gauges, new throttle Furuno Radar Garmin GPSmap 521 S Icom IC M504 Fusion MSIP600 radio with cd player and JBL Marine system Hearth Interface battery controller Taco Grand Slam Outriggers Blue T-top Swim steps Shower Bow cushions Center console with toilet Trim tabs Anchor locker with ss chain and bruce anchor Transom seat The complete boat for Curacao

## Exclusions

---

Owner's personal belongings.

## Disclaimer

---

The Company offers the details of this vessel or yacht in good faith but cannot guarantee or warrant the accuracy of this information nor warrant the condition of the vessel. A buyer should instruct his representatives, agents, or his surveyors, to investigate such details as the buyer desires validated. This vessel or yacht is offered subject to prior sale, price change, or withdrawal without notice.

# PHOTOS

**Boston Whaler for sale**

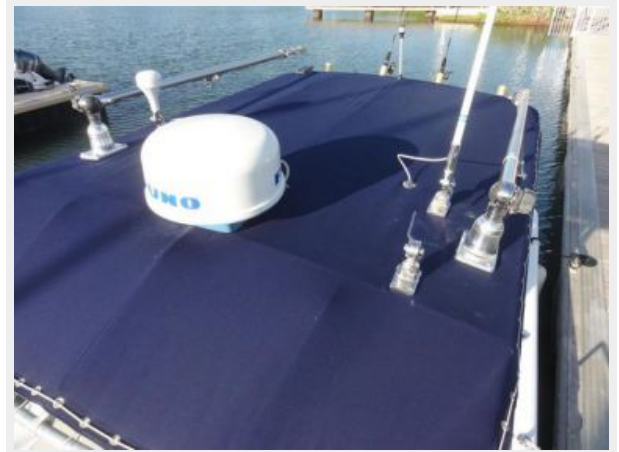


**Boston Whaler for sale**



**Boston Whaler for sale**









# CONTACTS

---

Andrey Shestakov, leading yacht broker of the sales department of Shestakov Yacht Sales Inc. Shestakov Yacht Sales Inc., the official representative of the Miami/Fort Lauderdale FL headquarters.

## Contact details

---

Email: [andrey@shestakovyachtsales.com](mailto:andrey@shestakovyachtsales.com)

Web: [shestakovyachtsales.com/en/](http://shestakovyachtsales.com/en/)

## Telephones

---

USA: +1(954)274-4435

## Office hours

---

Monday – Saturday: **9:00 - 21:00** EDT

Sunday: **closed**

## Address

---



Harbour Towne Marina, 850 NE 3rd St,  
STE 213, Dania, FL 33004