

GEORGIA MAE — SEA RAY



Builder: SEA RAY

LOA: 34' 0" (10.36m)

Year Built: 2008

Max Draft: 3' 1" (0.94m)

Model: Cruiser

Price: PRICE ON APPLICATION

Location: United States

Our experienced yacht broker, Andrey Shestakov, will help you choose and buy a yacht that best suits your needs **Georgia Mae — SEA RAY** from our catalogue. Presently, at Shestakov Yacht Sales Inc., we have a wide variety of yachts available on our sale's list. We also work in close contact with all the big yacht manufacturers from all over the world.

If you would like to buy a yacht **Georgia Mae — SEA RAY** or would like help answering any questions concerning purchasing, selling or chartering a yacht, please call **+1(954)274-4435**

TABLE OF CONTENTS

TABLE OF CONTENTS	2
SPECIFICATIONS	4
Basic Information	4
Dimensions	4
Speed, Capacities and Weight	4
Accommodations	4
Hull and Deck Information	4
Engine Information	4
DETAILED INFORMATION	5
Accommodations	5
Engines	5
Exclusions	5
Disclaimer	5
PHOTOS	6
Port Profile	6
Stern and Large cockpit	6
Starboard profile	6
Full cockpit area	6
Port side with Radar arch	7
Well equipped Helm	7
Helm Seating	7
Aft Cockpit Seating	7
Cockpit Refrigerator	7
Port Side Seating	7
Large foredeck with Sun Pad	8
Anchor Windlass	8
Large Salon	8
Galley	8

Starboard salon seating	9
Large Head With shower	9
Head	9
Stereo system	9
Cabin Refrigerator / Freezer	10
Microwave	10
Full owners manuals	10
Port engine	10
Starboard engine	11
Generator	11
CONTACTS	12
Contact details	12
Telephones	12
Office hours	12
Address	12

SPECIFICATIONS

Basic Information

Category: Cruiser

Sub Category: Express

Model Year: 2008

Year Built: 2008

Country: United States

Dimensions

LOA: 34' 0" (10.36m)

Max Draft: 3' 1" (0.94m)

Speed, Capacities and Weight

Displacement: 15500 Pounds

Water Capacity: 145 Gallons

Holding Tank: 28 Gallons

Fuel Capacity: 225 Gallons

Accommodations

Total Cabins: 2

Total Berths: 2

Total Heads: 1

Hull and Deck Information

Hull Material: Fiberglass

Engine Information

Manufacturer: Mercruiser

DETAILED INFORMATION

Accommodations

Large cockpit with ample seating aft, with cockpit table, cockpit refrigerator, sink and access to large swim platform. Dual helm seating, with single port side forward seating.

Cabin has large salon with gallery and entertainment center. Starboard side couch and forward queen size berth. Aft cabin with large couch / fold out full size berth

Full head with expanded shower area.

LOOKS LIKE NEW !

Engines

Popular Mercruiser 8.1 engines with very low hours and continually service by experienced professionals.

YOU WILL NOT FIND A CLEANER ENGINE AREA !

Exclusions

Owner's personal belongings.

Disclaimer

The Company offers the details of this vessel or yacht in good faith but cannot guarantee or warrant the accuracy of this information nor warrant the condition of the vessel. A buyer should instruct his representatives, agents, or his surveyors, to investigate such details as the buyer desires validated. This vessel or yacht is offered subject to prior sale, price change, or withdrawal without notice.

PHOTOS

Port Profile



Stern and Large cockpit



Starboard profile



Full cockpit area



Port side with Radar arch



Well equipped Helm



Helm Seating



Aft Cockpit Seating



Cockpit Refrigerator



Port Side Seating



Large foredeck with Sun Pad



Anchor Windlass



Large Salon



Galley



Starboard salon seating



Large Head With shower



Head



Stereo system



Cabin Refrigerator / Freezer



Microwave



Full owners manuals



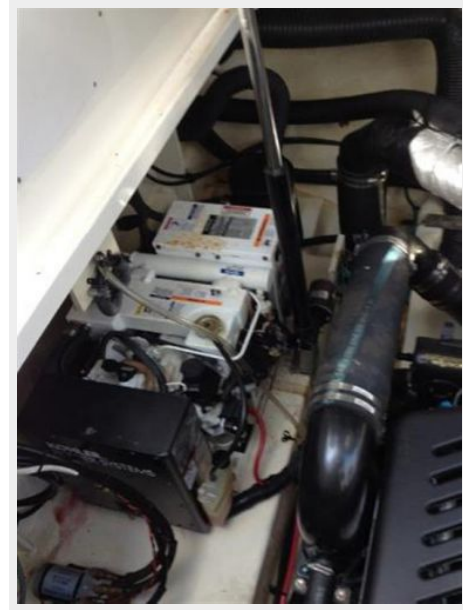
Port engine



Starboard engine



Generator



CONTACTS

Andrey Shestakov, leading yacht broker of the sales department of Shestakov Yacht Sales Inc. Shestakov Yacht Sales Inc., the official representative of the Miami/Fort Lauderdale FL headquarters.

Contact details

Email: andrey@shestakovyachtsales.com

Web: shestakovyachtsales.com/en/

Telephones

USA: +1(954)274-4435

Office hours

Monday – Saturday: **9:00 - 21:00** EDT

Sunday: **closed**

Address



Harbour Towne Marina, 850 NE 3rd St,
STE 213, Dania, FL 33004