

RISKY BUSINESS — DAVIS BOATWORKS



Builder: DAVIS BOATWORKS

Year Built: 1997

Model: Sport Fisherman

Price: PRICE ON APPLICATION

Location: Puerto Rico

LOA: 58' 8" (17.88m)

Beam: 17' 0" (5.18m)

Min Draft: 5' 0" (1.52m)

Cruise Speed: 27 Kts. (31 MPH)

Max Speed: 35 Kts. (40 MPH)

Our experienced yacht broker, Andrey Shestakov, will help you choose and buy a yacht that best suits your needs **Risky Business — DAVIS BOATWORKS** from our catalogue. Presently, at Shestakov Yacht Sales Inc., we have a wide variety of yachts available on our sale's list. We also work in close contact with all the big yacht manufacturers from all over the world.

If you would like to buy a yacht **Risky Business — DAVIS BOATWORKS** or would like help answering any questions concerning purchasing, selling or chartering a yacht, please call **+1(954)274-4435**

TABLE OF CONTENTS

TABLE OF CONTENTS	2
SPECIFICATIONS	4
Overview	4
Basic Information	4
Dimensions	4
Speed, Capacities and Weight	4
Accommodations	4
Hull and Deck Information	4
Engine Information	5
DETAILED INFORMATION	6
Cockpit	6
Salon	6
Galley	7
Companionway	8
Master Stateroom Stbd	8
Master Head	8
VIP Stateroom Fwd	9
VIP Head	9
Crew Stateroom	9
Crew Head	10
Fly Bridge	10
Electronics	11
Engine Room	11
Electrical	11
Tower	11
Exclusions	12
Disclaimer	12
PHOTOS	13

CONTACTS	22
Contact details	22
Telephones	22
Office hours	22
Address	22

SPECIFICATIONS

Overview

3/3 layout with 750 original hours on CAT 3412's, twin generators, watermaker, maple interior, Eskimo icemaker.

Basic Information

Category: Sport Fisherman

Model Year: 1998

Year Built: 1997

Country: Puerto Rico

Fly Bridge: Yes

Cockpit: Yes

Dimensions

LOA: 58' 8" (17.88m)

Beam: 17' 0" (5.18m)

Min Draft: 5' 0" (1.52m)

Speed, Capacities and Weight

Cruise Speed: 27 Kts. (31 MPH)

Cruise Speed RPM: 1850 Kts.

Max Speed: 35 Kts. (40 MPH)

Water Capacity: 250 Gallons

Fuel Capacity: 1500 Gallons

Accommodations

Total Cabins: 3

Total Heads: 3

Hull and Deck Information

Hull Material: Composite

Engine Information

Engines: 2

Manufacturer: Caterpillar

Engine Type: Inboard

Fuel Type: Diesel

DETAILED INFORMATION

Cockpit

Large spacious cockpit with custom cushions for freezer and baitbox top seating

Teak covering boards

Transom fish box

(4) rod holders

Fresh and saltwater washdown

Teak bridge access ladder

Tackle drawers

Lazarette access

Side gaff lockers

Eskimo Icemaker

Watermaker

Freezer

Cockpit grill

Teak table

Teak tocket launcher

Teak entry to salon

Swim platform

Electric cable master for shore cords

Cockpit sun shade

Salon

L-shaped ultra leather sofa with storage under cushions (recently recovered 2014)

Spacious corian countertop to stbd with cherry faced drawer and cabinets below

Entertainment center with Onkyo home theater system

Maple interior

Bar

VHF Radio

LCD TV with SAT TV antenna

New carpet on entire boat (June 2014)

New blinds (June 2014)

Dinette on port side recently refinished (June 2014)

Wine cooler

37" inch TV

Cocktail table with hi-lo mechanism

Plenty of storage

Corian countertops

12/24 volt lighting overhead

Galley

Corian countertops

Kitchen Aid 4-burner electric cooktop

Kitchen Aid Convection Microwave Oven

(4) drawer Sub Zero Refrigerator

(2) drawer Sub Zero Freezer

U Line wine cooler AC Electric

(2) Stainless steel sink

InSinkErator Disposal

L-shaped dinette

Companionway

Thor Washer and Dryer

Linen shelving with sea rail

Master Stateroom Stbd

Master Stateroom on starboard side

Ensuite Head

(2) cedar lined closets

Island Queen size bed with storage underneath

CruisAir conditioning with digital display

Corian topped night stands with cherry drawer and cabinet below

Flat screen TV with DVD player

Mirrored ceiling

Night table lamps

Maple and teak floors

New carpet in June 2014

Master Head

Corian countertop with vanity

Stainless sink

Bi-folding shower doors

Large shower

Cherry faced drawers and cabinets

Freshwater head

Teak and holly flooring

Mirrored medicine cabinet

Holding tank monitor

Exhaust fan

Freshwater head

VIP Stateroom Fwd

Queen bed

Hanging locker

Overhead storage

VIP Head

Corian countertop with vanity

Stainless sink

Bi-folding shower doors

Large shower

Cherry faced drawers and cabinets

Freshwater head

Teak and holly flooring

Mirrored medicine cabinet

Holding tank monitor

Exhaust fan

Freshwater head

Crew Stateroom

Upper/lower berths with cherry sea rails

Set of drawers below bottom bunk

Cedar lined hanging locker with (2) drawers below

Access to guest head

Crew Head

Corian countertop with vanity

Stainless sink

Bi-folding shower doors

Large shower

Cherry faced drawers and cabinets

Freshwater head

Teak and holly flooring

Mirrored medicine cabinet

Holding tank monitor

Exhaust fan

Freshwater head

Fly Bridge

Spacious bridge with bench style seating to stbd with rear facing backrest and custom cushions

U-shaped forward bench seating with storage below

Actuated electronics hatches

Rod storage to stbd below seat

Fwd access to brow

Teak helm pod with single lever controls

Windlass

Release Marine helm chairs

Rupp three spreader outriggers

Electronics

Koden MD 3640 Radar (48NM)

Depth Sounder and Garmin 6212 GPS

Simrad AP300X Autopilot

Icom IC 127 VHF

Engine Room

3412 CATs, 1350 hp with approx. 750 hrs

ZF Transmission with single lever controls

(2) Northern Lights generators

Fix automatic Halon 1301

Sea Recovery 800gpd water maker

Eskimo ice maker

110V fresh water pump

Sentry Battery chargers

(4) AC compressors

Electrical

24 and 12 volt DC lighting

Sentry A.C. Battery Charter

A.C. Electric / shore power inlets

Glendenning 240/50 weather protection

Hubell - One 120 volt / 30 amps

Power Lines 240 / 50

Tower

Pipewelders Tower

Exclusions

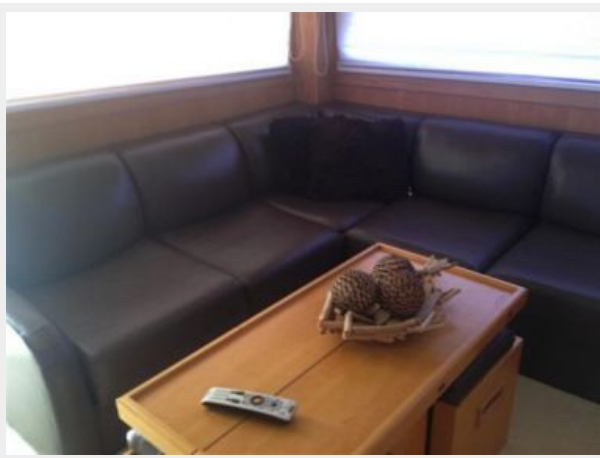
Owner's personal belongings.

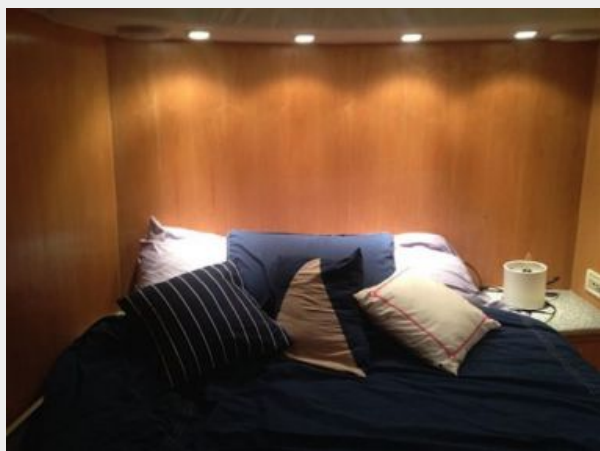
Disclaimer

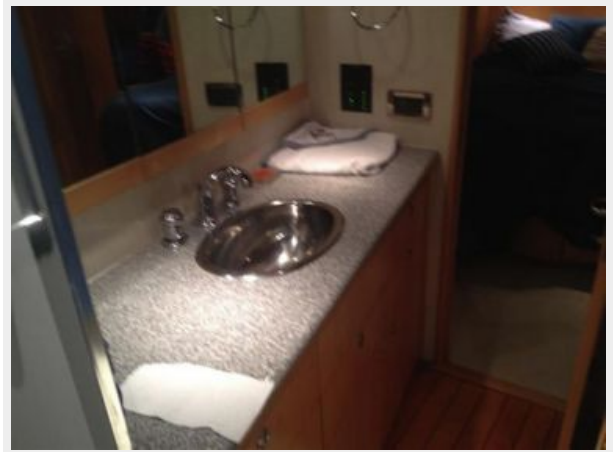
The Company offers the details of this vessel or yacht in good faith but cannot guarantee or warrant the accuracy of this information nor warrant the condition of the vessel. A buyer should instruct his representatives, agents, or his surveyors, to investigate such details as the buyer desires validated. This vessel or yacht is offered subject to prior sale, price change, or withdrawal without notice.

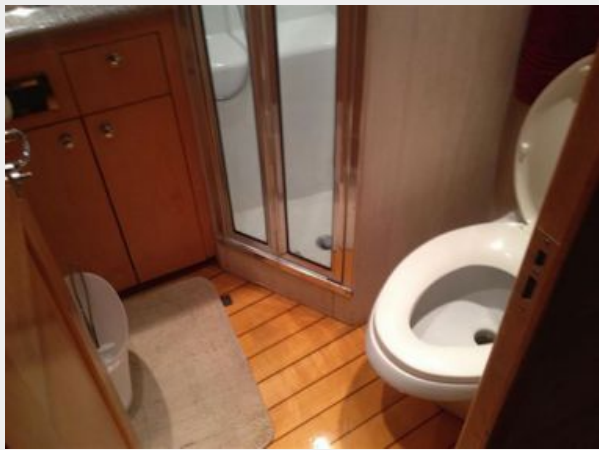
PHOTOS



















CONTACTS

Andrey Shestakov, leading yacht broker of the sales department of Shestakov Yacht Sales Inc. Shestakov Yacht Sales Inc., the official representative of the Miami/Fort Lauderdale FL headquarters.

Contact details

Email: andrey@shestakovyachtsales.com

Web: shestakovyachtsales.com/en/

Telephones

USA: +1(954)274-4435

Office hours

Monday – Saturday: **9:00 - 21:00** EDT

Sunday: **closed**

Address



Harbour Towne Marina, 850 NE 3rd St,
STE 213, Dania, FL 33004