

## ELIANA — HATTERAS



**Судостроитель:** HATTERAS

**Длина общая:** 64' 0" (19.51m)

**Год постройки:** 2008

**Модель:** Моторная яхта

**Цена:** ЦЕНА ЯХТЫ ПО ЗАПРОСУ

**Местонахождение:** United States

Купить **Eliana — HATTERAS** а также выбрать подходящую вам яхту из нашего каталога яхт вам поможет опытный яхтенный брокер Андрей Шестаков. На сегодняшний день компания **Shestakov Yacht Sales Inc.** имеет большое количество яхт в собственном списке продаж, а также тесно сотрудничает со всеми крупными яхтенными производителями по всему миру.

Для того чтобы купить яхту **Eliana — HATTERAS** а также проконсультироваться по любому вопросу связанному с покупкой, продажей, чартером яхт позвоните по телефону **+7(918)465-66-44**.

# ОГЛАВЛЕНИЕ

---

ОГЛАВЛЕНИЕ	2
ХАРАКТЕРИСТИКИ	5
Обзор	5
Основная информация	5
Размеры	5
Размещение	5
Корпус и палуба	5
Информация о двигателе	6
ПОДРОБНОЕ ОПИСАНИЕ	7
Salon	7
Pilothouse & Galley	7
Master Stateroom	8
Master Head	8
VIP Stateroom Frwd	8
VIP Head	8
Guest Stateroom Port Frwd	9
Guest Head	9
Companionway	9
Fly Bridge	10
Aft Deck	10
Mechanical	10
Construction	11
Lazarette / Crew Quarters	12
Electrical Equipment	12
Deck & Exterior	12
Broker Remarks	13
Exclusions	13
Исключения	13

Отказ от ответственности	13
ФОТОГРАФИИ	14
Bow Profile	14
Stbd View	14
Aft Deck	14
Stairs to Flybridge	14
Cockpit	14
Salon	15
Salon	15
Salon	15
Dinette	15
Dinette / Galley	15
Galley	16
Dinette	16
Galley	16
Master Stateroom	16
Master Stateroom	16
Master Stateroom	16
Head	17
VIP Stateroom	17
Head	17
Master Stateroom	17
Head	18
Washer / Dryer	18
Guest Stateroom	18
Flybridge	19
Flybridge Seating	19
Flybridge Grill	19
Flybridge	19

---

Flybridge Controls	20
Flybridge	20
Controls	20
Aft View	21
Bow	21
Crew Head	21
Bow	21
Access to Engine Room	22
Engine Room	22
Engine Room	22
Engine Room	22
Engine Room	23
Stbd Profile	23
Aft Profile	24
Stbd View	24
<b>КОНТАКТЫ</b>	<b>25</b>
Контактная информация	25
Телефоны	25
Время работы	25
Адрес	25

# ХАРАКТЕРИСТИКИ

## Обзор

"Eliana" is unquestionably the cleanest late model 64' Hatteras in the market today! Powered by Caterpillar C-32 1550's with only 920 hours, has been maintained with an "Open checkbook" policy by her owner. The high gloss cherry interior shows well and the 3 stateroom/3 head layout is perfect for the serious cruiser that likes to entertain. She boasts a Premium Audio/ Visual package and is equipped with a very comprehensive marine electronics package. "Eliana" is equipped with a second generator for peace of mind on long trips and a water maker for self sufficiency.

## Основная информация

Тип судна: Моторная яхта

Подкатегория: Flybridge

Модельный год: 2008

Год постройки: 2008

Страна: United States

## Размеры

Длина общая: 64' 0" (19.51m)

## Размещение

Всего кают: 3

Всего ком. состава: 3

Каюты экипажа: 1

Комм. состав экипажа: 1

## Корпус и палуба

Материал корпуса: Fiberglass

## Информация о двигателе

---

**Двигатели:** 2

**Производитель:** Caterpillar

**Модель:** C-32

**Тип двигателя:** Inboard

**Тип топлива:** Diesel

---

# ПОДРОБНОЕ ОПИСАНИЕ

---

## Salon

---

- High gloss cherry interior wood
- Raised panel cabinetry
- Custom carpet with traffic area carpet runner
- Bone colored ultra-leather salon sofa with storage
- Custom high gloss salon cocktail table with storage
- Air conditioning control panel (Cruise Air)
- Main ship's electrical panel
- Audio control panel
- Cherry high gloss valence boards with air conditioning overhead vents
- Underwater lights on/off switch
- Salon storage cabinets with raised panel fronts
- U-Line icemaker
- Samsung 8000 3D LED TV
- Window shades
- Central vacuum hookup in galley/helm

## Pilothouse & Galley

---

- Teak and holly Amtico flooring
- Elevated decorative dinette with dual polished stanchions
- (2) Sub Zero refrigerator slide drawers
- (2) Sub Zero freezer slide drawers with ice maker
- Custom marble surface decorative counter tops
- Single bowl stainless steel sink with single lever faucet and soap dispenser
- Fischer Pykel under counter dish washer
- Sharp convection/microwave oven
- (4) Burner cook top stove
- Overhead raised panel cabinets
- Dish and drawer storage
- Water tight exterior access door
- Staircase to fly bridge access door
- Audio control panel
- Air conditioning control panel (Cruise Air)
- Co2 monitor
- Smoke detector
- (4) Stacked pilothouse drawers
- Samsung pilot house flat panel TV

---

## Master Stateroom

---

- King size Polyfoam mattress center lined bed
- Dual cedar lined hanging locker to port
- (6) Chest of drawers port
- (6) Chest of drawers starboard
- Built in night stands
- Reading lights
- Port windows with privacy pull shades
- Samsung 32"flat panel TV
- DVD player
- Cherry valence boards with overhead air conditioning flow
- Air conditioning control panel (Cruise Air)
- Co2 monitor
- Smoke detector
- Carpeting

---

## Master Head

---

- Master tub with full shower doors
- Amtico teak and holly flooring
- Vacuflush head
- Medicine cabinet
- Exhaust fan
- Solid surface vanity counter tops with molded in sink
- Chrome fixtures
- Underneath vanity storage cabinets
- Plexi mirrored ceiling

---

## VIP Stateroom Frwd

---

- Queen size center line walk around berth with Polyfoam mattress
- Sharp flat panel TV
- Cherry valence boards with overhead air conditioning flow
- Air conditioning control panel (Cruise Air)
- Co2 monitor
- Smoke detector
- Carpeting
- Ocean Air hatch with sunscreen and shade

---

## VIP Head

---



- Solid surface counter tops
- Mirrored vanity/medicine cabinet storage
- Separate shower with circular Lexan shower door
- Exhaust fan
- Amtico teak and holly flooring
- Chrome fixtures
- Vacuflush head system
- Plexi mirrored ceiling
- Underneath vanity storage cabinets

---

## Guest Stateroom Port Frwd

---

- Side by side twin berths
- Mirrored bulkhead ½ headboard
- Night stand
- Cherry valence boards with overhead air conditioning flow
- Sharp Aquos flat panel TV
- Air conditioning control panel (Cruise Air)
- Co2 monitor
- Smoke detector
- Carpeting
- Head access
- Cedar lined hanging locker
- Ensuite head access

---

## Guest Head

---

- Solid surface counter tops
- Mirrored vanity/medicine cabinet storage
- Separate shower with circular Lexan shower door
- Exhaust fan
- Amtico teak and holly flooring
- Chrome fixtures
- Vacuflush head system
- Plexi mirrored ceiling
- Underneath vanity storage cabinets

---

## Companionway

---

- Whirlpool stacked clothes washer and dryer
- VAC Magic central vacuum system

- Carpet runners

## Fly Bridge

---

- 1,100 Nautical Structure fully hydraulic davit
- U-Line refrigerator with icemaker
- Stainless steel single bowl FB sink with h/c water
- 4 Sided EZ2CY fly bridge enclosure
- Pompanette dual helm upgraded helm chairs with stamoid covers
- New teak flooring
- Air conditioning
- Aft deck staircase to aft deck
- Oversize L-shape fly bridge seating with underneath storage and white stamoid cover
- Clarion bridge stereo/CD player
- Pioneer FB stereo speakers
- Aft deck dual burner Gaggenau electric BBQ grill
- Pipewelders hardtop
- Venturi style lower windshield

## Aft Deck

---

- Molded in aft deck bench seating with custom cushions and covers
- High gloss aft deck table with cover
- Teak cockpit decks and step treds
- Stainless steel entry door frame with sliding door
- Door to utility room/crews quarters in transom
- Bustle hoop rails on aft deck (removable)
- Starboard side closable transom gate from aft deck to cockpit
- Dropdown aft deck electronic CAT controls with thruster controls
- Hot/Cold aft deck fresh water shower
- Twin 50 amp shore power cords
- CATV hook-ups
- Fresh water compression hookup

## Mechanical

---

- Water manifold with centralized shut-off valve for sinks and showers
- Pultruded fiberglass rudder shelf with stainless-steel rudder tie bar
- AC fluorescent lights
- DC lights
- DC ventilation blower

- Twin diesel, Caterpillar C-32 1,550HP
- FM200 fixed fire extinguishing system for engine compartment with automatic and remote manual controls, plus audible and visual discharge signals
- Two 21.5kW freshwater-cooled Electronic Quiet Diesel Onan generator with shock mounts, sound enclosure, seawater strainer, remote start, fuel/water separator, hour meter and water lift muffler
- Fiberglass air intake system for engine room and engine combustion air with baffling and filters to minimize water intrusion
- Electric fuel transfer system with filtration and dry tank protection for pump
- Dockside water inlet with pressure regulating valve and Hatteras patented quick disconnect
- 24-volt DC bilge and sump pumps: five at 2000 gph and three at 3700 gph, with heavy-duty float switches and protective guards
- Bronze/chrome ball-valves through bolted in solid fiberglass on all underwater through-hull fittings with electrical bonding throughout
- Pressurized 230-volt AC freshwater pump with central charcoal filter
- AC distribution panel
- DC distribution panels
- Painted polyurethane engine room and bilges with rubber deck mat between engines
- Pick-up sea chests
- Digital monitoring for main engines in battery panel
- Start and stop switches and hour meter
- Engine room water tight bulkhead door
- Fresh water hose bib
- 800 Gal/day fresh water maker
- Oil changing system (engines/ gears/ generators)
- Engine room camera system

## Construction

---

- Solid fiberglass bottom construction
- 7-bladed Nibral propellers
- Isophthalic gel coat, exterior layer, white
- Blister-resistant vinylester resin in hull bottom skin coat
- Hull and superstructure linear polyester/polyurethane coating
- Boot stripe, linear polyester/polyurethane coating
- Decks, non-skid surface, polyurethane paint with polymeric beads
- Hull sides and superstructure laminated with PVC foam core
- Fiberglass stringers
- Steel laminated in stringers at key locations to bolt engine mounts
- Engine room bulkheads and decks of resin-infused composite construction using PVC foam core with layers of fiberglass laminate on each side

---

## Lazarette / Crew Quarters

---

- Port side inset bunk
- Crew's freezer
- Vanity
- Vacuflush toilet
- Tool storage
- Transom access door from the swim platform or access through aft deck floor hatch

---

## Electrical Equipment

---

- (2) Onan 21.5ks generators: Port 1431hrs Starboard 1368hrs
- 230-volt AC 30-gallon electric water heater
- Two 24-volt banks of heavy-duty, 12-volt marine batteries (4) mounted in fire-retardant fiberglass boxes
- Gel/lead acid compatible 240-volt automatic programmable battery charger, 50/60Hz
- Automatic battery paralleling system with switch at control console
- Two 240-volt, 50-amp, transformer connected retractable shore cords with over-current protection, port sport deck
- AC and DC light fixtures
- Battery control panel with fuses and isolation switches
- DC electronics panels with magnetic circuit breakers
- AC distribution panels with magnetic circuit breakers
- AC switching panel with source selector switches, digital-volt meter, ammeter, frequency meter, generator start/stop controls, voltage boost tap switch and interlock selector breakers
- Systems monitor with programmable logic controller read-out, visual and audible signals for exhaust temperature, alternator, battery voltage, high bilge water, fire warning in engine compartment, fire extinguisher discharge in engine room, AC power loss, smoke detectors, carbon monoxide detectors, and holding tank 3/4 full monitor
- Ground fault protection on AC receptacles and lighting circuits
- Air conditioning, 86,000 BTU, with reverse-cycle heating, with A/C compressors, individually controlled by SMX controls in each compartment

---

## Deck & Exterior

---

- Marquip boarding ladder
- Nav lights/Anchor light
- Hatteras seamless salon windows
- Forward window black out sunscreen
- Forward sun pads
- Maxwell windlass with gypsy and capstan and foot controls
- Polished Delta plow anchor 75lbs

- Bow rails
- Cockpit 110v outlets
- Exterior fly bridge staircase with storage underneath

---

## Broker Remarks

---

"Eliana" is unquestionably the cleanest late model 64' Hatteras in the market today! Powered by Caterpillar C-32 1550's with only 920 hours, has been maintained with an "Open checkbook" policy by her owner. The high gloss cherry interior shows well and the 3 stateroom/3 head layout is perfect for the serious cruiser that likes to entertain. She boasts a Premium Audio/ Visual package and is equipped with a very comprehensive marine electronics package. "Eliana" is equipped with a second generator for peace of mind on long trips and a water maker for self sufficiency.

She has the popular Hatteras convex hull shape allowing for maximum interior space forward and a softer ride in rough water. Propeller tunnels afford this 116,700lb motor yacht a 4'8" draft.

The owner can no longer use her and will consider any reasonable offer!

---

## Exclusions

---

- OWNER'S PERSONAL ITEMS OR OTHER ITEMS NOT LISTED HEREIN AT TIME OF VIEWING.
- TENDER

---

## Исключения

---

При продаже яхты исключаются личные вещи владельца.

---

## Отказ от ответственности

---

Компания предоставляет описание судна или яхты добросовестно, но не может гарантировать точность этой информации, а также не ручается за техническое состояние. Покупатель должен проинструктировать своих агентов или оценщиков исследовать представленную информацию более подробно, по собственному желанию. Продажа судна или яхты, изменение цены или снятие с продажи будет происходить без предварительного уведомления.

# ФОТОГРАФИИ

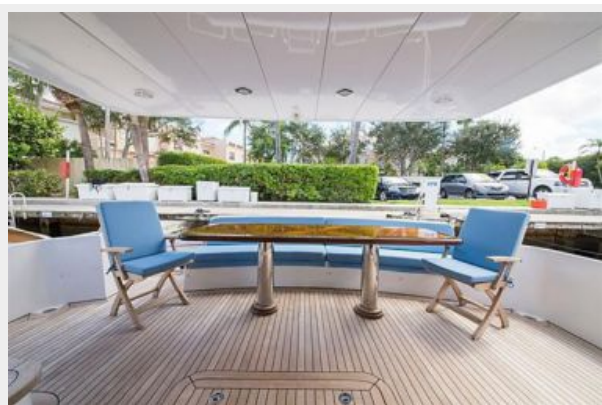
**Bow Profile**



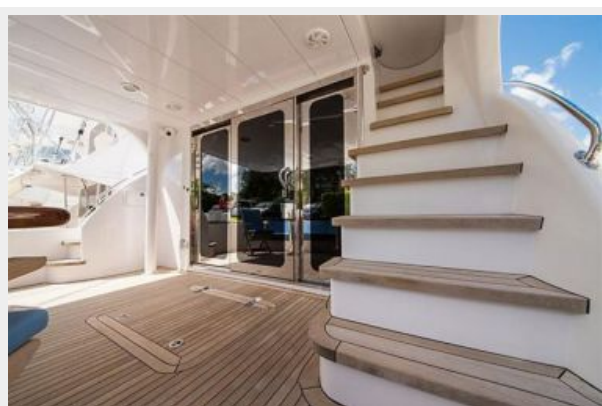
**Stbd View**



**Aft Deck**



**Stairs to Flybridge**



**Cockpit**



Salon



Salon



Salon



Dinette



Dinette / Galley



**Dinette**



**Galley**



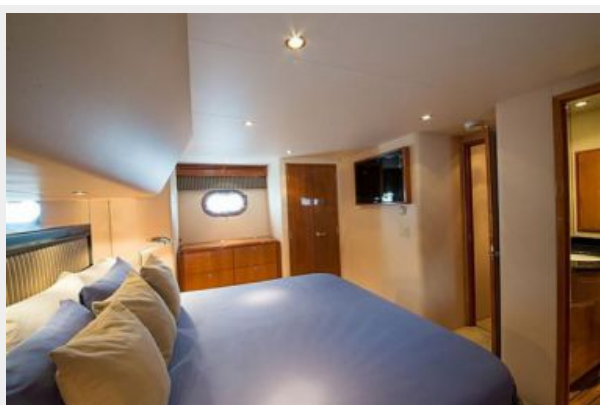
**Galley**



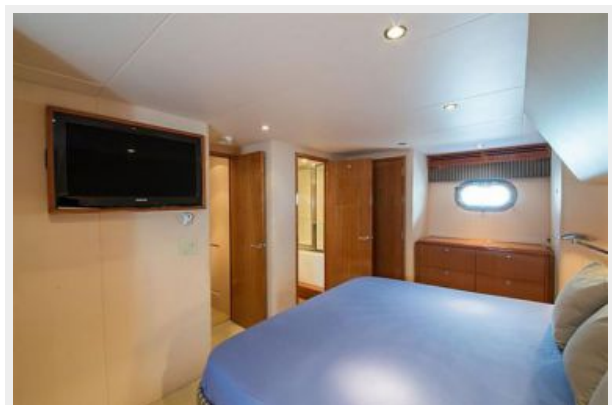
**Master Stateroom**



**Master Stateroom**



**Master Stateroom**





**Head**



**VIP Stateroom**



**Head**



**Master Stateroom**



## Head



## Washer / Dryer



**Flybridge**



**Flybridge Seating**



**Flybridge Grill**



**Flybridge**





**Flybridge Controls**



**Flybridge**



**Controls**



**Aft View**



**Bow**



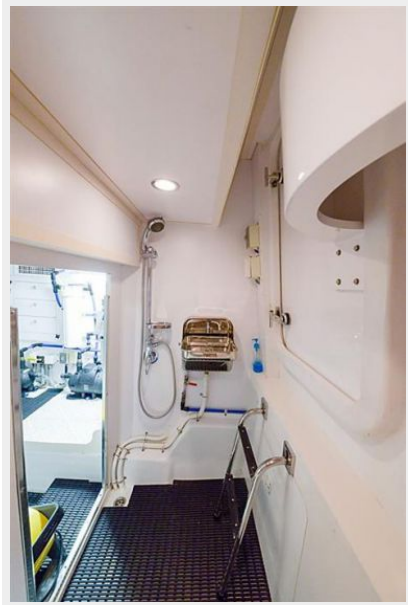
**Crew Head**



**Bow**



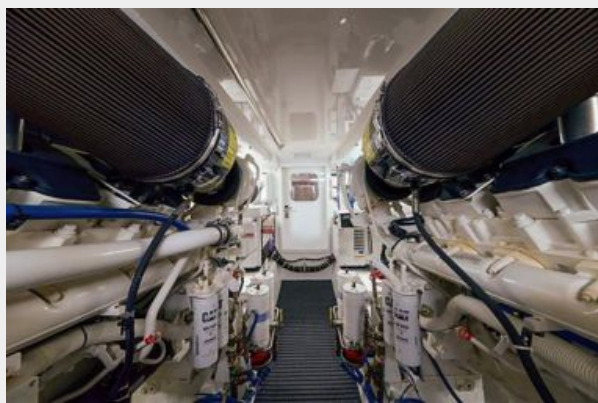
### Access to Engine Room



### Engine Room



### Engine Room



### Engine Room



### Engine Room



### Stbd Profile



**Stbd View**



**Aft Profile**





# КОНТАКТЫ

---

Андрей Шестаков (Andrey Shestakov) – ведущий яхтенный брокер отдела продаж яхт и судов компании Shestakov Yacht Sales Inc. Официальный представитель Shestakov Yacht Sales Inc. для русскоговорящих клиентов в центральном офисе компании в Майами/Форт Лодердейл/Флорида/США.

## Контактная информация

---

Email: [andrey@shestakovyachtsales.com](mailto:andrey@shestakovyachtsales.com)

Web: [shestakovyachtsales.com](http://shestakovyachtsales.com)

## Телефоны

---

Краснодарский край: **+7(918)465-66-44**

США, Майами, Флорида: **+1(954)274-4435**

## Время работы

---

Понедельник – Суббота: **9:00 - 21:00**  
EDT

Воскресенье: **Закрето**

## Адрес

---



Harbour Towne Marina, 850 NE 3rd St,  
STE 213, Dania, FL 33004