

UNDAUNTED — DAUNTLESS



Судостроитель: Dauntless

Год постройки: 2013

Модель: Экспедиционная яхта

Цена: **ЦЕНА ЯХТЫ ПО ЗАПРОСУ**

Местонахождение: United States

Длина общая: 73' 0" (22.25m)

Ширина: 21' 0" (6.40m)

Мин. осадка: 6' 0" (1.83m)

Крейс. скорость: 11 Kts. (13 MPH)

Макс. скорость: 13 Kts. (15 MPH)

Купить **UNDAUNTED — Dauntless** а также выбрать подходящую вам яхту из нашего каталога яхт вам поможет опытный яхтенный брокер Андрей Шестаков. На сегодняшний день компания **Shestakov Yacht Sales Inc.** имеет большое количество яхт в собственном списке продаж, а также тесно сотрудничает со всеми крупными яхтенными производителями по всему миру.

Для того чтобы купить яхту **UNDAUNTED — Dauntless** а также проконсультироваться по любому вопросу связанному с покупкой, продажей, чартером яхт позвоните по телефону **+7(918)465-66-44**.

ОГЛАВЛЕНИЕ

ОГЛАВЛЕНИЕ	2
ХАРАКТЕРИСТИКИ	4
Основная информация	4
Размеры	4
Скорость, вместимость и масса	4
Размещение	4
Корпус и палуба	5
Информация о двигателе	5
ПОДРОБНОЕ ОПИСАНИЕ	6
UNDAUNTED	6
Accommodations	6
Исключения	13
Отказ от ответственности	14
ФОТОГРАФИИ	15
Profile 2	15
Profile 3	15
Ariel View	15
Ariel View	15
Hauled View	15
Front Profile	15
Hauled Aft View	16
Hauled Bow View	16
Aft Deck	16
Side Decks	16
Aft Deck	16
Flybridge	16
Flybridge	17
Flybridge	17

Bridge helm	17
Bow Sunpad	17
Salon	17
Salon	17
Pilothouse	18
Pilothouse	18
Master Stateroom	18
Master Stateroom	18
Master Stateroom Head	18
Master Stateroom Head	18
VIP Stateroom	19
VIP Stateroom Head	19
Guest Stateroom 2	19
Guest Stateroom 3	19
Guest Head	19
Crew Quarters	19
Lower Service Deck	20
Crew Quarters	20
Engine Room	20
Engine Room	20
КОНТАКТЫ	21
Контактная информация	21
Телефоны	21
Время работы	21
Адрес	21

ХАРАКТЕРИСТИКИ

Основная информация

Тип судна: Экспедиционная яхта	Модельный год: 2013
Год постройки: 2013	Страна: United States
Открытая палуба мостика: Да	Кубрик: Да

Размеры

Длина общая: 73' 0" (22.25m)	Ширина: 21' 0" (6.40m)
Мин. осадка: 6' 0" (1.83m)	

Скорость, вместимость и масса

Крейс. скорость: 11 Kts. (13 MPH)	Дальность на крейсерской скорости: 4000
Макс. скорость: 13 Kts. (15 MPH)	Вместимость воды: 550 Gallons
Вместимость сточного бака: 300 Gallons	Объем топливного бака: 4000 Gallons

Размещение

Всего кают: 4	Спальные места: 9
Всего ком. состава: 6	Каюты экипажа: 1
Койки экипажа: 2	Спальных мест экипажа: 2
Комм. состав экипажа: 1	

Корпус и палуба

Материал корпуса: Composite Infused
Vinylester

Информация о двигателе

Двигатели: 2

Производитель: John Deere

Модель: 6090SFM75MS

Тип двигателя: Inboard

Тип топлива: Diesel

ПОДРОБНОЕ ОПИСАНИЕ

UNDAUNTED

UNDAUNTED is an expedition style yacht built for long range cruising in comfort and style. Designed by expert naval architect Jon Overing with interiors by renowned JC Espinosa, she is classically elegant and strikingly impressive. In design and production, the ability to make long passages to remote locations was a priority, as was the shallow, 6' draft, allowing UNDAUNTED access to places that a similarly-sized yacht cannot reach.

The hull is of fast-displacement form with a bulbous bow creating higher speeds, reduced pitching, and dampened roll in unfavorable sea conditions. All vital and some non-vital systems have redundancy so back-ups are in place in the event of a failure.

Interior volume truly separates the UNDAUNTED from others. Seven-foot headroom throughout the yacht, created by the superior raised pilot house design and 21' beam, exhibits an exceptional use of space. The large, fully functioning galley is up a few steps from the salon. It is adorned with granite counters, excellent appliances and adjoining leather dinette with granite inlaid table, which is shared by the pilot house.

Four exquisite staterooms are below. Each offers an en-suite head & over-sized shower. The VIP and one guest stateroom are furnished with queen berths; one is furnished with twins. The full-beam Master, located amidships for supreme comfort, provides a king berth and an elegant his & hers ensuite bath. Aft, the crews area includes bunks for two, a head and shower, galley with cook-top and refrigerator, dinette that converts to a double bunk, and direct access to the engine room. A lower service deck with commercial laundry facilities and three, over-sized commercial freezers is bright and airy with recessed lighting, smooth oak cabinetry, and 6'4" headroom.

The aft deck with Perma-teak sole is large and comfortable, providing over sized settee, two dining tables and wet bar with ice maker. Wide, walk-around Perma-teak side decks facilitate line handling and observation. The flybridge has everything necessary for outside enjoyment including a full helm; an entertainment bar with over-sized sink, BBQ and ice maker; a large, U-shaped dinette; a spacious area for sun lounging; two stairways (aft and forward) leading below; and ample room for the 17' dinghy that may be used to reach beaches and docks when anchored out.

Accommodations

WALK THROUGH

UNDAUNTED may be entered from the aft deck or from either side deck through watertight, glass paneled pilot house doors. Additionally, a staircase from the flybridge leads below to the pilot house.

Stepping onto the aft deck, the yacht's spacious 21' beam design is immediately apparent. Aft, steps lead to the Perma-teak swim platform which offers access through a central hull door to the crew quarters/lounge and, beyond, the engine room. A large banquette with two fixed dining tables extends across the transom. Adjacent, on the aft bulkhead, is a built-in bar with stainless sink, refrigerator, and ice maker. A large picture window, above, allows a view to the salon. Wide decks extend forward on both sides to pilothouse entry doors, then continue forward to the bow, creating full-walkaround capability. A staircase on the port side leads to the flybridge. A glass-paneled door to the salon, as well as an engine room emergency exit, are starboard.

The elegant salon is voluminous with 7' ceilings and a 21' beam. Rich, light oak, satin-finished woodwork with fluted panels, decorative moldings, and marble insets is highlighted by white textured faux leather headliner. Both are featured throughout the yacht. Mini LED recessed lights are encompassed by decorative wood molding and provide ample lighting for the decor of white carpet and furnishings with accents in cool, marine hues and themes. An entertainment center with hideaway 42" flatscreen TV is adjacent to a large sofa, loveseat, and glass/wood cocktail table. Two comfortable occasional chairs complete the seating. Full-view windows extend the length of the room on both sides and continue into the dining area, forward, flooding the space with natural light and offering fabulous sea vistas. White pleated blinds topped with decorative Roman shades enhance each window.

Just forward, the formal dining area features a glass-topped table with wood accents and eight upholstered dining chairs. Marble-topped, wood storage buffets are port and starboard and a concealed, ceiling-to-floor wood cabinet on the forward bulkhead holds china and glass wear service for 24. Another concealed cabinet holds the electric panels and a SubZero divided wine cooler. Above the dining table, recessed lighting panels, beautifully trimmed with wood molding, provide the perfect ambiance for any dining experience.

Continuing forward and up a few steps is the day head, starboard. The adjacent galley, portside, is open to the pilot house and features full-sized Miele cooking appliances, a wood-paneled SubZero refrigerator with two drawer freezers, ample cabinet and drawer storage, a Franke sink with Grohe faucet, and countertops of granite with deep blue highlights. Abutted to and forward of the galley counter is a Midnight Blue textured faux leather upholstered dinette with adjustable wood table, shared by the Pilothouse, just beyond. Trimmed and topped with matching Midnight Blue leather, the expertly-equipped wood helm features extensive electronics and a 180-degree view through oversized windows. Watertight exit doors port and starboard lead to side decks and a stairway on the starboard aft bulkhead leads to the oversized flybridge.

Forward on the port side is a lighted stairway leading to the private VIP stateroom with queen berth, full-view windows, and ensuite bath with wood cabinetry, marble flooring, exotic marble countertop, and oversized, glass shower.

Returning to the salon: A lighted stairway on the starboard side leads to the guest and master accommodations, as well as to the impressive service deck. Arriving below, a central foyer gives access to the two elegant guest staterooms, one furnished with a queen berth, the other with two twins. Similar ensuite heads adjoining each stateroom are adorned with deep red marble

countertop, porcelain sink, Grohe faucet, wood cabinetry, and marble flooring. Each has an oversized shower with glass door as well.

The classic and sophisticated master stateroom, down several steps and amidships, takes advantage of the full 21' beam and is adorned with wood cabinetry and moldings and luxurious fabrics. Central is a king size berth; a white loveseat is port. Full view windows on both sides of the space allow natural light and wide vistas. The impressive, Master ensuite bath provides his and hers bathrooms with raised panel wood cabinetry with glass insets, stunning marble countertops, porcelain sinks with Grohe faucets, and marble flooring. The centralized oversize shower features rainwater head and handheld wand and is accessed from both sides through etched glass doors.

Several steps below the Master, a lower service deck features two large Miele washers, two Asko dryers, three Summit five cubic-foot freezers, a laundry counter with Franke laundry sink, and copious storage. All is set in beautiful light oak cabinetry. The 6'4" headroom creates a comfortable work area. At the far end of the space, a watertight door gives access to the equipment compartment with water heaters, water pumps, and water makers. A watertight steel door leads forward from the equipment compartment to the bulbous bow.

The crew quarters, entered via the swim platform, is very comfortable with two berths, a head & shower, crew galley with cooktop, microwave, sink, refrigerator, and L-shaped dinette that converts to a berth.

The immense flybridge, accessed by forward and aft staircases, provides perfect al fresco dining, entertaining, or relaxation. A fiberglass hard top with 7' headroom tops the fully-equipped helm station, entertainment bar with oversized sink, refrigerator, BBQ, and spacious, nautical-themed U-shaped dinette with table, electrically operated that converts to a large sun pad. Just aft and open to the sun, a 17' inflatable dinghy sits comfortably, ready for launch with hydroelectric davit. Open space on the portside of the dinghy calls for lounge chairs and sunbathers.

CONSTRUCTION

100% infused Vinylester construction Solid laminate infused (SCRIMP) Vinylester hull Airex core bulkheads and stringers Airex core infused (SCRIMP) Vinylester superstructure Six watertight hull compartments International epoxy barrier coat and antifoulant Watertight stabilizer compartments, port/stbd

PERFORMANCE

Maximum speed: 13.5 knots Cruise speed: 11 knots Economy speed: 10 knots Range at 12 knots: 1,100 miles Range at 11 knots: 2,000 miles Range at 10 knots: 4,000 miles Range at 9 knots: 5,000 miles

All speeds and range miles are estimates and depend upon sea conditions and weather.

EXTERIOR

Stainless 316L solid bar rub rails Stainless 316L handrails All stainless 316L exterior hardware
Freshwater wash downs Port, stbd & aft deck plug-ins for walkabout controller

BOARDING PLATFORM

Stainless 316L railings Direct access to crew compartment Port and stbd stainless 316L bollards
Stainless 316L Swim Ladder Pull-out hot and cold shower

AFTDECK, MAIN DECK

Built in seating w/ tables (2) & canvas Built-in bar w/ stainless sink, Norcold refrigerator Raritan
ice maker Corian counter top Cabinet with type one PDF life jackets Port and stbd. warping
capstans Stainless 316L bollards, Maxwell Rolling hawser cleating system heltered access to
engine room & crew quarters Stainless 316L Railings Kobelt stern engine controls Port &
starboard boarding gates Perma-teak decks 110 volt AC outlet Fusion speakers LED lighting

SALON

Transitional style décor Designer fabrics, art & accessories Upholstered sofa & love seat
Occasional swivel chairs (2), upholstered Glass & wood framed cocktail table Oak wood raised
paneling & crown molding Oak valances with AC diffusing vents Fluted oak window frame
columns Built in entertainment center LED lighting recessed in ceiling Exotic marble insets on
cabinet tops AC/heat system w/digital controls Wood and faux leather wall coverings & headliner
High quality fitted carpet, silk/wool blend SubZero divided wine cooler Samsung 42"TV in
elevating cabinet Bose stereo surround sound system Samsung blu-ray DVD player

FORMAL DINING

Dining table with upholstered chairs (8) Forward floor-to-ceiling china cabinet. Pegged storage.
Portside fore & aft china cabinet China, stemware & flatware. Service for 24. Lighting recessed in
ceiling Roman blinds & pleated privacy shades Overhead soffit with full and indirect lighting
Beveled mirror on corner storage cabinet Touch latches on all cabinets AC/heat system w/digital
controls Wood and faux leather wall coverings High quality fitted carpet, silk/wool blend

DAY HEAD

Vanity w/mirror Marble top wash basin Ece sink, under counter mount Grohe faucet Head Hunter
toilet Exhaust fan system Selected wood and faux leather wall coverings Amtico flooring

GALLEY/WHEEL HOUSE

Raised panel cabinets Granite counter tops, bullnosed & lipped Touch latch cabinets SubZero
refrigerator & 2 freezer drawers Self-cleaning oven, Miele Microwave oven, Miele Dishwasher,
Miele Futura Diamond Surface range w/exhaust hood, Miele Double stainless Franke sink Grohe
goose neck faucet Under counter & overhead lighting Pantry cabinets AC/heat system w/digital
controls Wood and faux leather wall coverings Amtico tiled floor

PILOTHOUSE

Padded control console, faux leather, Midnight Blue Full instrumentation Stidd helm chair covered in Midnight Blue faux leather Elevated faux leather (Midnight Blue) settee w/ marble inlay table Three windshield wipers/washers Recessed white & red lighting in ceiling Aqua-Air AC/heat system w/digital controls (2) Bose stereo & Fusion speakers Port & starboard watertight doors Oversized grab rails Safety panel & monitoring system Selected wood and faux leather wall coverings Wood cabinets with touch latches Digital stabilizer controls Generator controls (2) Amtico tiled floor

ELECTRONICS

Furuno Nav Net Touch screen –2 units 14"LCD Furuno Nav Pilot 700 Interphase forward looking sonar ICOM IC M604 2 units, w/remote speaker ICOM IC-M802 HF marine radio, SSB Radar scanners (2), 12kw 72 mile & 4kw 48 mile Furuno digital depth/speed/temp/heading/position Furuno digital depth/speed/temp/heading/position Furuno Universal AIS system, vessel identification Trac Vision KVH M-7 Kobelt rudder angle Indicator NFV steering control panel, Ates & Kobelt Compass, Silva Kobelt engine synchronizers Dauntless yacht navigation & bilge control panel Sirius satellite weather receiver Vetus wiper speed controller Royal Mariner clock, temp & humidity, barometer **MASTER STATEROOM**

Full king size bed with high quality mattress Headboard mirror package. Swing arm lamps. Overhead soffit High-end designer fabrics & linens Rope lighting under bed Built in nightstands & dresser Storage space under bed Storage cabinets, forward bulkhead. Touch latches. Lined closets w/ lights Built in entertainment center wired to receive components Fixed windows Bose stereo system Built in settee High quality fitted carpet, silk/wool blend Wood and faux leather wall coverings AC/heat system w/ digital controls (2) Lighting recessed in ceiling Samsung 32"TV

MASTER STATEROOM HIS / HER BATH

Raised panel wood vanities with mirrors Marble flooring Exotic marble countertops Two separate water closets. Headhunter toilets. Duravit wash basins (2) & Grohe faucets (2) Oversized stall shower with large drains Grohe shower faucet w/ rainshower head & wand Marble flooring in shower Exhaust fan system Lighting recessed in ceiling **VIP STATEROOM**

Queen size bed with high quality mattress Headboard mirror package with swing arm lamps High-end designer fabrics & linens Rope lighting under bed Built in nightstands & dresser Lined closets w/ lights Roman shades with pleated privacy shades Storage space built in under beds Built in entertainment center Fixed port lights, 4 large stainless steel High quality fitted carpet, silk/wool blend Wood and faux leather wall coverings AC/heat system w/ digital controls Lighting recessed in ceiling Samsung 22"TV, flat screen Fusion stereo & media device dock MS-DKIPUSS **VIP STATEROOM ENSUITE BATH**

Wood, raised panel vanity w/ mirror Marble countertop w/ wash basin Marble flooring Grohe faucet Headhunter toilet Large stall shower with rain head & wand Marble flooring in shower Designer wall coverings Exhaust fan system Lighting recessed in ceiling

GUEST STATEROOMS

One queen, & one twin cabin Bunks with high quality mattresses Headboard mirror package. Swing arm lamps. High-end designer fabrics & linens Rope lighting under bed Built in nightstands & dresser Lined closets w/ lights Drawer space built in under beds Built in entertainment center, Fusion stereo Samsung 19"TV, flat screen Fixed portlights High quality fitted carpet, silk/wool blend Wood and faux leather wall coverings AC/heat system w/ digital controls Lighting recessed in ceiling Fusion stereo & media device dock MS-DKIPUSS **GUEST STATEROOM ENSUITE BATHS**

Vanity w/mirror Marble countertop Duravit basin & Grohe faucet Headhunter toilet Large stall shower. Marble flooring. Exhaust fan system Lighting recessed in ceiling Marble Flooring **CREW CABIN** Single lower and upper berths w/ high quality mattresses Lined closet w/ light Built in entertainment center wired to receive components Fixed port lights Amtico floor tiles Selected wood and faux leather wall coverings AC/heat system w/digital controls Lighting recessed in ceiling **CREW GALLEY & LOUNGE** Cooktop, Kenyon 2-burner Under counter refrigerator, Vitrifigo Stainless sink & Grohe faucet Overhead and under counter storage Built in dinette. Table converts to double berth. Built in entertainment center wired to receive components Selected wood and faux leather wall coverings Digital AC controls Amtico floor tiles

CREW HEAD

Vanity w/mirror Corian countertop w/ wash basin Headhunter toilet Large stall shower Exhaust fan system Lighting recessed in ceiling Amtico floor tiles

FOREDECK

Built in sun lounger w/ powered hatch to storage under Oversize deck hatch to access lower service deck Port and Stbd Roller Fairleads w/Stainless 316L Bollards Stainless 316L fog bell stand Stainless 316L burgee staff (2) Maxwell VRC3500 anchor windlasses w/chain compressors Stainless steel anchors (2) 150 lbs. **FLYBRIDGE**

Fiberglass hard top & radar mast w/LED lights Spreader lights (2), LED Helm station w/ full instrumentation Lexan windscreen w/ stainless 316L handrail Stidd helm chair Forward seating w/ cushions & table to starboard Forward L-shaped seating w/cushions to port Access hatch & direct stairs to pilothouse Entertainment bar w/ Corian countertop Refrigerator / freezer (Vitrifigo) Stainless sink with Grohe faucet Raritan ice maker Gas BBQ grill, stainless steel Built-in "U" shaped convertible dinette w/ hi-low table Fusion stereo speakers Oversized stainless steel hand rails. Oversized scuppers. Ample storage in cabinets Remote spotlight Indirect courtesy lighting

BOAT DECK

17' tender with 70 hp Yamaha outboard Flush stainless 316L tie down pad eyes 1500 Lb. hydraulic crane (1) Marquipt TL2 1500 & chocks Sun lounge chairs (2), teak Stairwell to main deck Indirect courtesy lighting

ELECTRONICS, FLYBRIDGE

Furuno Nav Pilot Furuno Nav Net touch screen, 9"LCD Kobelt synchronizers ICOM remote mics-2 Interphase forward looking sonar Furuno digital depth/speed/temp/heading/position Furuno digital depth/speed/temp/heading/position Compass, Silva NFV steering control panel, Atecs & Kobelt **LOWER SERVICE DECK**

Laundry Facility: 2 washers (Miele), 2 dryers (Asko) Laundry counter 6' 4" head room Stainless laundry sink (Franke), Grohe faucet Three (3) Summit 5 cu. ft. freezers Dry provisions storage, port & starboard Cabinet storage, port & starboard Oversize access hatches to foredeck Wood wall coverings Amtico floor tiles Forward equipment compartment with watertight door

EQUIPMENT COMPARTMENT

Water heaters (2) Water pumps (2) TFMarine Water makers (2) SeaFari Watertight stainless steel door to bulbous bow **ENGINE ROOM & MAJOR EQUIPMENT**

Walk-in engine room Direct access from ER to crew compartment & main deck John Deere 6090SFM75 M3, 425 BHP @ 2,300 RPM, 182 hours (2) ZF 305-1 reduction gears 2.917:1 ratio (2) 3" Aquatech 22HS propeller shafts 38" dia. X 28" pitch, 5-blade, Nibral, "S" class, 0.85 DAR props Stainless 316L foil rudders w/ 3" diameter |Aquatech 22HS rudder stocks Stainless 316L "I" shaft struts Kobelt single lever controls Kobelt walk-about controller w/ 3 stations Water drop exhaust system Generators on stainless steel platform. Batteries under. Racor engine fuel/water filters, dual Racor generator fuel/water filters Alfa-Laval centrifuge fuel polishing system Fuel transfer system Manual fuel transfer pump Air compressor Proprietary dual stand-pipe seachest, main feed crossover Self-cleaning strainers Fire extinguishing system, automatic Electric fire pump & hose system Hydraulic bow and stern thrusters TRAC hydraulic stabilizers TRAC STAR stabilization at rest Kobelt hydraulic steering Headhunter tank level monitoring system Freshwater pressure sets (2) Hot water heaters (3) 15 Ton Aqua Air chilled water A/C/heat system. Fresh air supply. 3 units. Battery chargers (5). Elects: Pronautic (1). Eng/house: Shark (4) Batteries, AMG (5 sets). 2 engine, 2 house & 1 electronics. Engine room blower system with auto speed controllers Engine room exhaust blower system, auto speed control Air conditioned engine room and mech space (2) Maxwell VRC3500 anchor windlasses Stainless 316L anchor pockets & (2)65KG SHHP SST 316L Anchors w/ 300 ft. 12.5mm galv stud link chain, port/stbd Automatic anchor wash system Coast Guard approved safety equipment Marquipt tide ride ladder & boarding ladder Over-head stainless steel grab rails Black & grey water tanks & pumps Blue dry deck protective floor covering ABT-TRAC bow & stern thruster Stainless steel exhausts Air compressor Work bench with vise & tool kit

ELECTRICAL SYSTEM

Onan 21.5 KW generators (2) 100 AMP 3 phase Atlas voltage transformer pre-wire AC Distribution panels & breakers DC distribution panels and breakers 110 & 240-volt AC 24-volt DC service 24-volt batteries, 5 sets with chargers Battery chargers (5). Elects: Pronautic (1). Eng/house: Shark (4) Batteries, AMG (5 sets). 2 engine, 2 house & 1 electronics. 24- & 110-volt lighting 110-volt duplex outlets

BUILDER'S PERSPECTIVE

To truly appreciate the quality and distinction of UNDAUNTED, it is important to understand why and how this yacht was designed and built.

After months of searching the market for a small explorer style yacht that would be self-sufficient and equipped for eight months of cruising and finding nothing that would meet their needs, the builders sought to design a custom yacht, securing Jon Overing, naval architect and J.C. Espinosa, interior space planner, for the project.

A raised pilot house design was chosen, as it lends itself to a spilt deck arrangement able to provide a superior use of space that includes seven-foot head room throughout the main and accommodation decks.

The construction method of infused Vinylester using the SCRIMP method provides a consistent, strong hull for which the frames needed in metal construction are unnecessary. This allows interior volume. The value of strength, weight, efficiency and low maintenance in this size yacht all pointed to this construction method.

The need to be built with complete redundancy of all key systems as well as some non-key systems was a must. State-of-the-art wasn't compulsory, but rather, reliable, proven, and solid equipment.

Jon Overing's design of the bulbous bow allows UNDAUNTED to reach a speed of 14 knots with excellent fuel efficiency, surpassing the 11.5 knot theoretical hull speed of regular displacement yachts. She has a transoceanic range at 10 knots.

Other important features include a 6' draft, the ability to have a dinghy able to carry 9 people (17' RIB), and a huge flybridge entertainment area. The bridge offers dining and an outdoor kitchen with grill, icemaker, and refrigeration under a hard top as well as a sunning area, aft.

SALESMAN'S COMMENTS

Undoubtedly the best expedition style yacht on the market today, UNDAUNTED is worth every moment of consideration. Personal inspection will quickly reveal the exceptional quality in every aspect of design, construction, and detail. Come on board to experience and appreciate the many outstanding features of this yacht that provide a supreme cruising experience.

Исключения

При продаже яхты исключаются личные вещи владельца.

Отказ от ответственности

Компания предоставляет описание судна или яхты добросовестно, но не может гарантировать точность этой информации, а также не ручается за техническое состояние. Покупатель должен проинструктировать своих агентов или оценщиков исследовать представленную информацию более подробно, по собственному желанию. Продажа судна или яхты, изменение цены или снятие с продажи будет происходить без предварительного уведомления.

ФОТОГРАФИИ

Profile 2



Profile 3



Ariel View



Ariel View



Hauled View



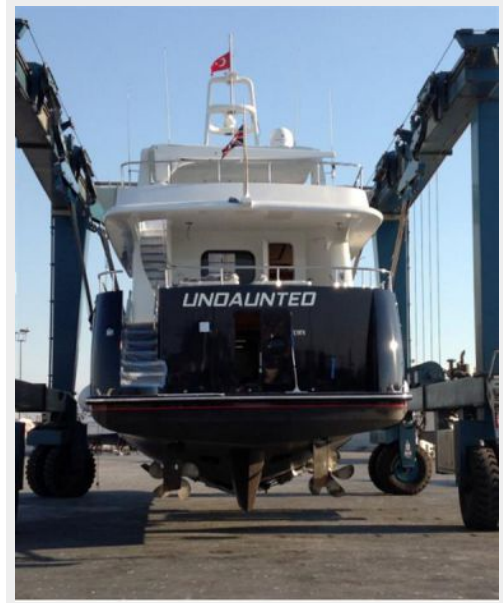
Front Profile



Hauled Bow View



Hauled Aft View



Side Decks



Aft Deck



Aft Deck



Flybridge



Flybridge



Flybridge



Bridge helm



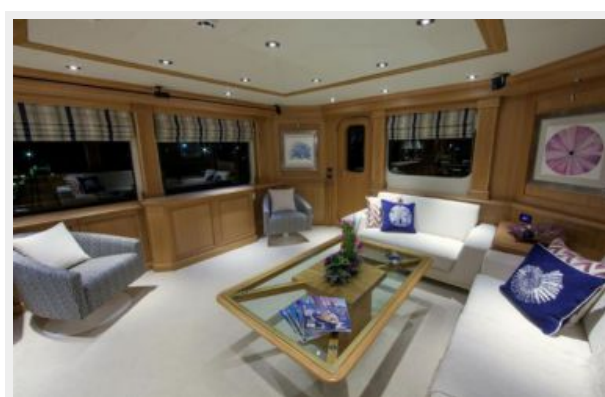
Bow Sunpad



Salon



Salon



Pilothouse



Pilothouse



Master Stateroom



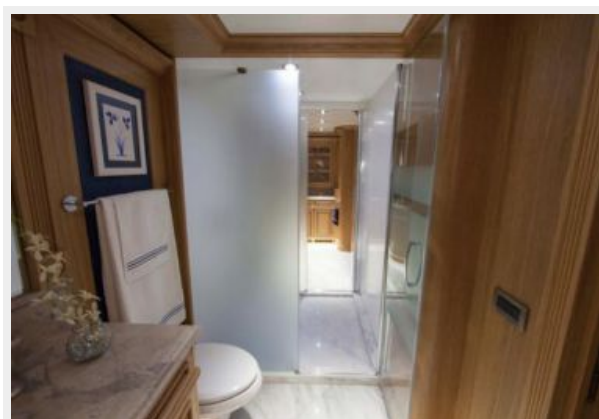
Master Stateroom



Master Stateroom Head



Master Stateroom Head



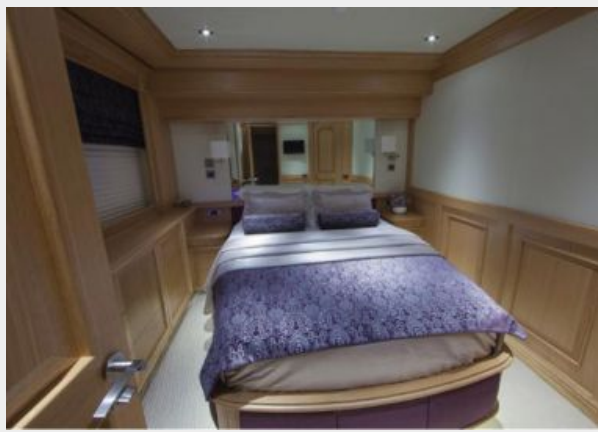
VIP Stateroom



VIP Stateroom Head



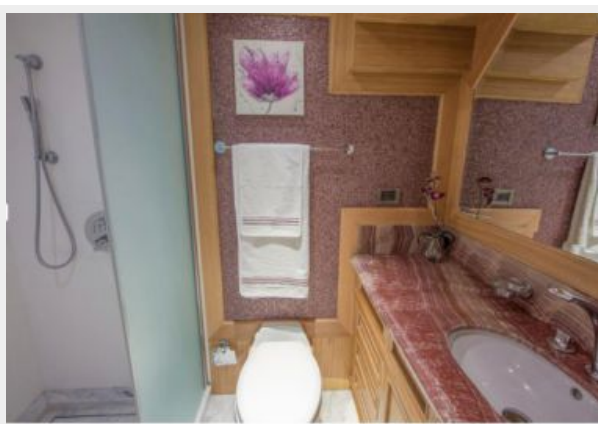
Guest Stateroom 2



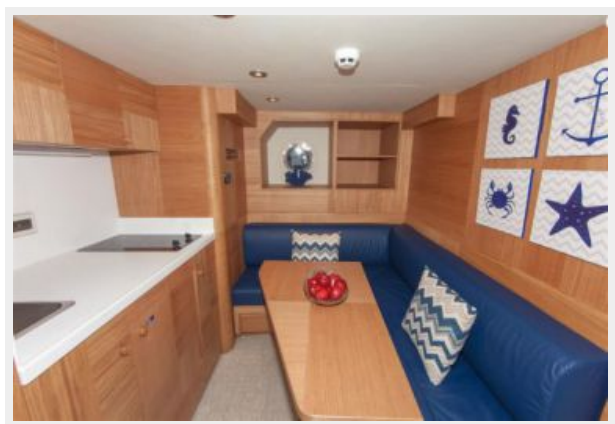
Guest Stateroom 3



Guest Head



Crew Quarters



Crew Quarters



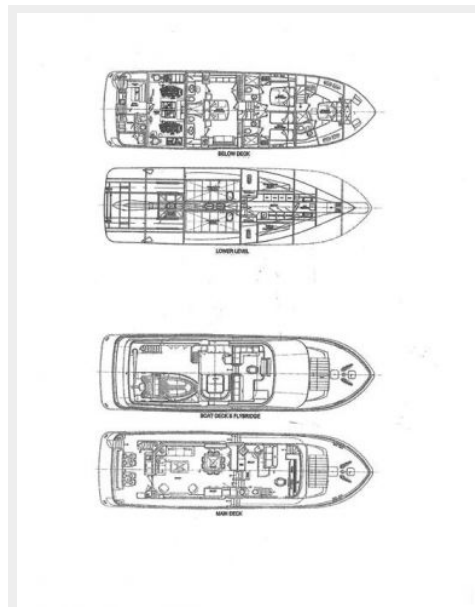
Lower Service Deck



Engine Room



Engine Room



КОНТАКТЫ

Андрей Шестаков (Andrey Shestakov) – ведущий яхтенный брокер отдела продаж яхт и судов компании Shestakov Yacht Sales Inc. Официальный представитель Shestakov Yacht Sales Inc. для русскоговорящих клиентов в центральном офисе компании в Майами/Форт Лодердейл/Флорида/США.

Контактная информация

Email: andrey@shestakovyachtsales.com

Web: shestakovyachtsales.com

Телефоны

Краснодарский край: **+7(918)465-66-44**

США, Майами, Флорида: **+1(954)274-4435**

Время работы

Понедельник – Суббота: **9:00 - 21:00**
EDT

Воскресенье: **Закрито**

Адрес



Harbour Towne Marina, 850 NE 3rd St,
STE 213, Dania, FL 33004