

OUR TRADE — CRUISERS YACHTS



Builder: [Cruisers Yachts](#)

LOA: 48' 0" (14.63m)

Year Built: 2013

Beam: 14' 6" (4.42m)

Model: Cruiser

Max Draft: 3' 5" (1.04m)

Price: PRICE ON APPLICATION

Location: United States

Our experienced yacht broker, Andrey Shestakov, will help you choose and buy a yacht that best suits your needs **OUR TRADE — Cruisers Yachts** from our catalogue. Presently, at Shestakov Yacht Sales Inc., we have a wide variety of yachts available on our sale's list. We also work in close contact with all the big yacht manufacturers from all over the world.

If you would like to buy a yacht **OUR TRADE — Cruisers Yachts** or would like help answering any questions concerning purchasing, selling or chartering a yacht, please call **+1(954)274-4435**

TABLE OF CONTENTS

TABLE OF CONTENTS	2
SPECIFICATIONS	5
Overview	5
Basic Information	5
Dimensions	5
Speed, Capacities and Weight	5
Accommodations	6
Hull and Deck Information	6
Engine Information	6
DETAILED INFORMATION	7
Accommodations	7
Upper Salon	7
Lower Salon	7
Galley	8
Electronics & Navigation	8
Mechanical	8
Cockpit	9
Hull & Deck	9
Exclusions	9
Disclaimer	9
PHOTOS	10
Upper Salon Forward	10
Upper Salon Aft	10
Salon	10
Lower Salon	10
Lower Salon	11
Lower Salon	11
Galley	11

Galley	11
Master Stateroom	11
Master Stateroom	11
Master Vanity	12
Master Stateroom	12
Master Head	12
Master Head	12
VIP Stateroom	13
VIP Stateroom	13
VIP Head	13
VIP Shower	13
Engine Room	13
Engine Room	13
Engine Room	14
Engine Room	14
Engine Room	14
Engine Room	14
Engine Room	14
Sunpad	14
Windlass	14
Bow Chaise Lounge	15
Dealer Installed Bimini	15
Cockpit Electric Grill	15
U-Shape Seating w/ Storage	15
Cockpit Wet Bar	16
Fender Storage	16
CONTACTS	17
Contact details	17
Telephones	17
Office hours	17

Address

17

SPECIFICATIONS

Overview

This 2013 Cruisers 48 Cantius is in like new condition with only 125 hours on her Volvo D6, 600 IPS engines. She has Six year passport warranty on the engines, genset and accessories. She has been maintained weekly by a captain and has gone through the Galati 170 check list as our trade. She serves as a day boat just as well as a boat for long range cruising and island hopping. The joystick docking makes for easy maneuvering around even the tightest marina. She is turnkey and ready to go.

ESC coverage until 2019. Ask broker for details!

Basic Information

Category: Cruiser

Sub Category: Express

Model Year: 2013

Year Built: 2013

Country: United States

Coast Guard #: 1250454

Vessel Top: 2363

Dimensions

LOA: 48' 0" (14.63m)

Beam: 14' 6" (4.42m)

Max Draft: 3' 5" (1.04m)

Speed, Capacities and Weight

Displacement: 32700 Pounds

Water Capacity: 80 Gallons

Holding Tank: 50 Gallons

Fuel Capacity: 350 Gallons

Accommodations

Total Cabins: 2

Sleeps: 6

Total Heads: 2

Hull and Deck Information

Hull Material: Fiberglass

Hull Color: Black

Engine Information

Engines: 2

Manufacturer: Volvo Penta

Model: D6-600 IPS

Engine Type: Inboard

Fuel Type: Diesel

DETAILED INFORMATION

Accommodations

- Full Beam Master suite with ensuite head and stall shower
- Master 22" Flatscreen LCD TV/DVD with stereo system
- Therapeutic foam mattresses
- Master stateroom washer/dryer unit
- Duvets and pillow shams
- Vacuflush sanitation system
- VIP Centerline berth
- Guest VIP private entrance to guest head
- VIP separate stall shower
- 22" Flatscreen LCD TV/DVD Forward VIP Stateroom

Upper Salon

- Sport coupe hard top with aft sliding door
- Power sunroof
- Walnut Cabinetry
- Amtico Flooring
- (2) Zone air conditioning with reverse cycle heat
- 32" LCD TV/DVD on hydraulic lift and swivel
- Forward electric wing windows port/stbd
- Shitake interior seating
- Double helm seat

Lower Salon

- Walnut cabin entry steps
- Walnut cabinetry
- Shitake interior seating
- 26" Flatscreen LCD TV/DVD
- Single CD/Stereo
- Central vacuum system

- Sofa converts to sleeper
- Table converts to ottoman w/cushion

Galley

- Coffee maker
- Microwave/convection oven
- Full size refrigerator/freezer
- (2) Burner electric stove
- Custom Walnut cabinetry

Electronics & Navigation

- Garmin Color 4kw 48 mile open array radar with 12.1" display
- (2) Garmin 8212 12" GPS, Plotter, Sounder
- Garmin Auto Pilot
- VHF Radio
- KVH M3 SAT TV system with (3) receivers
- Depth finder
- (2) back up cameras
- Flir Thermal Imaging
- Rogue Wave Wifi
- Remote spotlight

Mechanical

- 15.5kw Diesel generator
- Auto fire extinguisher
- Dockside wiring (240V (1) 50 AMP)
- Windlass with chain and line
- Bilge pump with high water alarm
- Battery charge system & monitor
- Polished stainless steel anchor
- Anchor washdown system
- Macerator pumpout for holding tank
- 3 Function engine and generator oil change system
- 50AMP/250V Glendinning cablemaster
- Algae-X Fuel Cond System

Cockpit

- Electric grill, port
- Wet bar, stbd
- Thermostatic controlled refrigerator/freezer, port
- Ice maker, starboard
- U-Shaped seating with storage
- Cockpit table converts to sunlounge
- Courtesy lights
- Hot/cold shower
- Cockpit, woven matt
- Dockside water inlet
- Fender storage
- Dealer installed bimini

Hull & Deck

- Extended swim platform with hydraulic lift
- Black hull color
- Three position, two person, bow chaise lounge with cushions and drink holders
- Anchor wash-down system
- Transom electric hydraulic activated storage compartment

Exclusions

Owner's personal belongings.

Disclaimer

The Company offers the details of this vessel or yacht in good faith but cannot guarantee or warrant the accuracy of this information nor warrant the condition of the vessel. A buyer should instruct his representatives, agents, or his surveyors, to investigate such details as the buyer desires validated. This vessel or yacht is offered subject to prior sale, price change, or withdrawal without notice.

PHOTOS

Upper Salon Forward



Upper Salon Aft



Salon



Lower Salon



Lower Salon



Lower Salon



Galley



Galley



Master Stateroom



Master Stateroom



Master Stateroom



Master Vanity



Master Head



Master Head



VIP Stateroom



VIP Stateroom



VIP Head



VIP Shower



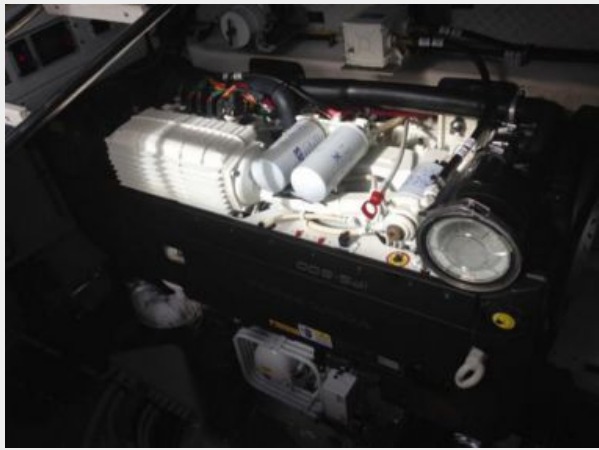
Engine Room



Engine Room



Engine Room



Engine Room



Engine Room



Engine Room



Sunpad



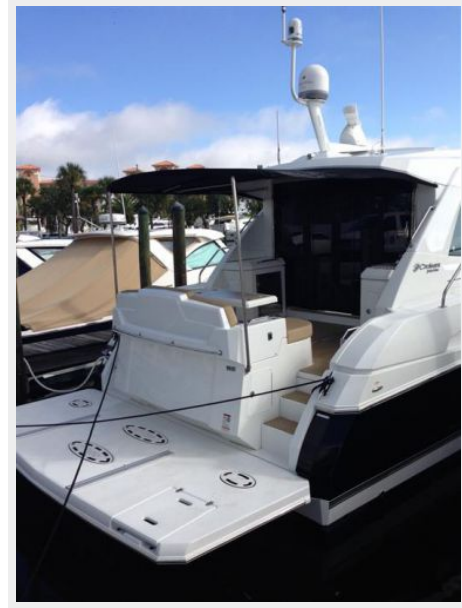
Windlass



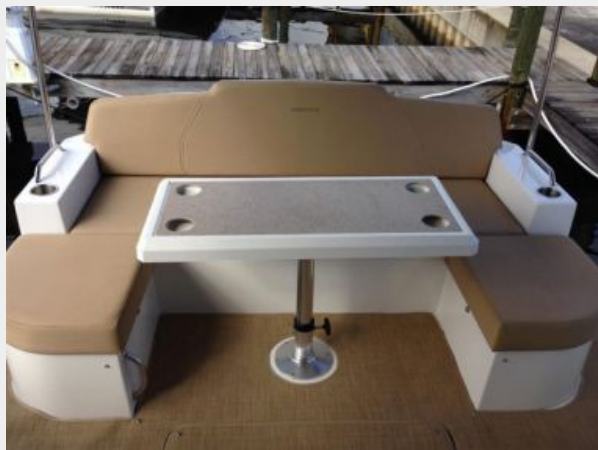
Bow Chaise Lounge



Dealer Installed Bimini



U-Shape Seating w/ Storage



Cockpit Electric Grill



Cockpit Wet Bar



Fender Storage



CONTACTS

Andrey Shestakov, leading yacht broker of the sales department of Shestakov Yacht Sales Inc. Shestakov Yacht Sales Inc., the official representative of the Miami/Fort Lauderdale FL headquarters.

Contact details

Email: **andrey@shestakovyachtsales.com**

Web: shestakovyachtsales.com/en/

Telephones

USA: +1(954)274-4435

Office hours

Monday – Saturday: **9:00 - 21:00** EDT

Sunday: **closed**

Address



Harbour Towne Marina, 850 NE 3rd St,
STE 213, Dania, FL 33004