

DOWN TIME TOO — RIVIERA



Builder: RIVIERA

Year Built: 2008

Model: Sport Fisherman

Price: PRICE ON APPLICATION

Location: United States

LOA: 45' 0" (13.72m)

Beam: 15' 9" (4.80m)

Min Draft: 3' 11" (1.19m)

Cruise Speed: 28 Kts. (32 MPH)

Max Speed: 32 Kts. (37 MPH)

Our experienced yacht broker, Andrey Shestakov, will help you choose and buy a yacht that best suits your needs **Down Time Too — RIVIERA** from our catalogue. Presently, at Shestakov Yacht Sales Inc., we have a wide variety of yachts available on our sale's list. We also work in close contact with all the big yacht manufacturers from all over the world.

If you would like to buy a yacht **Down Time Too — RIVIERA** or would like help answering any questions concerning purchasing, selling or chartering a yacht, please call **+1(954)274-4435**

TABLE OF CONTENTS

TABLE OF CONTENTS	2
SPECIFICATIONS	6
Overview	6
Basic Information	6
Dimensions	6
Speed, Capacities and Weight	6
Accommodations	6
Hull and Deck Information	7
Engine Information	7
DETAILED INFORMATION	8
Down Time Too	8
Accommodations	8
Galley	8
Electrical	8
Electronics & Navigation	9
Deck Equipment	9
Engine & Mechanical Equipment	10
Fishing Equipment	10
Additional Equipment	10
Comments	11
Salesman's Comments	11
Exclusions	11
Disclaimer	11
PHOTOS	12
Bow View	12
Running	12
Stern	12
Forward Deck	12

Forward Deck	13
Forward Deck / Pulpit	13
Forward Deck/Tender	13
Forward Deck/Tender	13
Cockpit	13
Cockpit	13
Engine Room Access	14
Cockpit	14
Cockpit	14
Cockpit	14
Flybridge	14
Flybridge/Helm	14
Flybridge Helm	15
Flybridge Helm Seating	15
Flybridge	15
Flybridge Helm	15
Flybridge	16
Salon	16
Salon	16
Salon	16
Galley	17
Galley	17
Dinette	17
Galley	17
Dinette	18
Stairs To Cabins	18
Forward Stateroom	18
Forward Stateroom	18
Head	19

Forward Stateroom	19
Head	19
Guest Stateroom 1	19
Guest Head	20
Guest Stateroom 1	20
Guest Stateroom 2	20
Laundry	20
Engine Room	21
Engine Room	21
Engine Room	21
Engine Room	21
Engine Room	21
Engine Room	21
Engine Room	21
Engine Room	22
Engine Room	22
Engine Room	22
Engine Room	22
Engine Room	22
Engine Room	22
Engine Room	22
Engine Room	23
Engine Room	23
Engine Room	23
Engine Room	23
Engine Room	23
Engine Room	23
Engine Room	23
Engine Room	24
Engine Room	24
Engine Room	24
Engine Room	24

Engine Room	24
Engine Room	24
Engine Room	25
Engine Room	25
CONTACTS	26
Contact details	26
Telephones	26
Office hours	26
Address	26

SPECIFICATIONS

Overview

OWNER MOTIVATED! \$34,000 PRICE REDUCTION! BRING OFFERS!

Basic Information

Category: Sport Fisherman

Sub Category: Convertible

Model Year: 2008

Year Built: 2008

Country: United States

Fly Bridge: Yes

Cockpit: Yes

Dimensions

LOA: 45' 0" (13.72m)

Beam: 15' 9" (4.80m)

Min Draft: 3' 11" (1.19m)

Speed, Capacities and Weight

Cruise Speed: 28 Kts. (32 MPH)

Max Speed: 32 Kts. (37 MPH)

Displacement: 39400 Pounds

Water Capacity: 132 Gallons

Holding Tank: 40 Gallons

Fuel Capacity: 608 Gallons

Accommodations

Total Cabins: 3

Sleeps: 6

Total Heads: 2

Hull and Deck Information

Hull Material: Fiberglass

Engine Information

Engines: 2

Manufacturer: Caterpillar

Model: C12

Engine Type: Inboard

Fuel Type: Diesel

DETAILED INFORMATION

Down Time Too

OWNER MOTIVATED! \$34,000 PRICE REDUCTION! BRING OFFERS! Riviera is the premiere example of this innovative model. Flybridge stairs, the latest generation hull, layout, and flybridge designs, and a separate pump room for non-mechanical systems are just a few of the ways this is improved from previous Riviera models. This boat features a Frank Mulder-designed running surface with prop pockets and underwater exhaust for an extremely dry, soft ride with great efficiency. Multiple watertight compartments and a full collision bulkhead forward make this one of the safest, toughest boats on the market. The level of engineering, both on the factory and aftermarket sides, is extremely high. Power and Motoryacht Magazine tested this particular boat in 2008. The very favorable review is available on their web site. Please take a look at the Full Specs to see the extent and thoughtfulness of her equipment.

Accommodations

Forward master stateroom features a walkaround queen berth with ample storage underneath. TV/DVD with HD Sat TV feed and DVR. Port stateroom features twin berths with filler cushion and sheets that convert into a queen berth. TV/DVD with HD Sat TV feed and DVR. Starboard stateroom has over/under berths and ample storage. The salon has custom Amtico teak and holly flooring that extends to the lower companionway with thresholds at each stateroom. There is also a custom cabinet for the upgraded salon Sony Bravia HD TV. The TV flips up to reveal the boat's DVR, wireless internet, and other electronics modules.

Galley

Corian countertops with stainless steel sink and Grohe fixtures.

- Vitrefrigo stainless steel drawer-type fridges (2) and freezer.
- GE Microwave/ Convection oven.
- Fisher and Paykel drawer dishwasher.
- Dedicated storage for dishes and glassware.
- Beverage fridge in salon with icemaker.

Electrical

All 33 interior lights were replaced in 2009 with LEDs to minimize heat dispersion and power usage.

- 13.5 Kw ONAN EQD Generator with hard sound shield.
- 24 volt electrical system allows the greater loading needed today.
- 50 amp 125/250 volt shore power cord with Glendinning Cablemaster with wireless remote. Cord upgraded to 75'

Electronics & Navigation

The electronics suite consists of systems often only seen on much larger vessels, with the capability to navigate and maintain communications almost anywhere in the world.

- Dual 12" Raymarine G120 monitors interfaced with:
- 12KW Super HD open array radar
- 3KW DSM400 Sounder Module linked to an in-hull oil bath transducer
- SR100 Sirius Weather Module
- AIS250 AIS Receiver
- (2) GPM400 Processors
- Remote keyboard to use system through salon television
- Raymarine ST8001+ Autopilot
- Raymarine ST60 Sat TV with HD receivers and DVR's to each of the three TV's aboard as well as the flybridge G Series monitors.
- KVH F55 Tracphone Sat Data system
- ACR RCL100D 24v Spotlight
- ICOM M422 VHF with hailer
- Upgraded flybridge stereo with iPod interface and Poly Planar Platinum speakers
- SeaKey security system with Geofence
- Cameras to Salon and Engine Room
- Lifetag Man Overboard System
- Airmar weather station

Deck Equipment

Stars and Stripes hull paint in AwlCraft2000 paint including engine intakes and bow pulpit underside. Switlik life raft in hard canister on foredeck. Custom 316-gauge stainless steel bow rail. Stainless steel anchor fitted as main. Spare 45# Danforth as spare in stbd anchor locker. 23 cup holders on flybridge with custom drainage system.

- Zodiac Projet 350 Jet Tender with the following upgrades:
- Sony waterproof AM/FM CD Player
- Steelhead SM1000 1000' Davit with remote rotation, luff,

- Upgraded Battery Switch
- 2 AGM Batteries
- 4 Revere Suspender-style Vests
- 12 volt air pump
- Pressure Gauge
- Lift Harness
- Depth Sounder
- Custom silver Stamoid cover.
- and extension. The davit is Awlgrippd to match the deck.
- STIDD Low Back Admiral helm seats with optional Ladderback teak trim and custom covers.
- UMT custom removable chocks on foredeck for tender.
- Glendinning HoseMaster in cockpit

Engine & Mechanical Equipment

All pumps, fittings, through-hulls, etc., in engine room labeled. Custom Diamond Plate flooring to walkway between motors. Separate mechanical space houses the water heater, air conditioning systems, battery chargers, water filters, and other systems that are best kept apart from the engine room's inherent heat and moisture. Full Cat and ONAN service kits including a spare raw water pump for the motors. VEEM Interceptor props with original VEEMs stored as spares in custom lazarette storage.

- Twin Disc EC300 Quickshift transmissions with built-in trolling valves and variable idle.
- Aqualarm exhaust temperature alarms.
- Yacht Controller wireless remote control linked to the boat's motors, bow thruster, and windlass.
- Block heaters.

Fishing Equipment

- Transom livewell with remote circulation, fill, and lighting.
- Overhead hidden rod storage in salon with custom-spec'd rod holders.
- Cockpit freezer with thermostat that allows it to be adjusted from deep freeze to refrigerator.
- Four no-bolt Release rod holders in addition to stock rod holders.
- Rocket launcher on flybridge.
- Plate in deck for fighting chair.

Additional Equipment

HRO700 700GPD watermaker with charcoal and infrared filters. Custom washer system for

flybridge enclosure with dedicated fresh water pump and controls at the helm station.

- 3 Sea Vision SV19 24v underwater lights

Comments

This boat features a Frank Mulder-designed running surface with prop pockets and underwater exhaust for an extremely dry, soft ride with great efficiency. Multiple watertight compartments and a full collision bulkhead forward make this one of the safest, toughest boats on the market. The level of engineering, both on the factory and aftermarket sides, is extremely high. Power and Motoryacht Magazine tested this particular boat in 2008. The very favorable review is available on their web site.

Salesman's Comments

Here is a great opportunity to own an absolutely loaded late model 45 Rivera convertible. She is on her second owner since new and has been professionally maintained her entire life. "Down Time Too" has realized over \$300K in upgrades by her two owners and is now equipped with just about every option you would ever need including a Yacht Controller system. Her molded steps to the flybridge also make her a very safe and accommodating arrangement for everyone on board. Fresh bottom paint July 2014. Engine/generator fluid service Aug 2014. Professional detailing Sept 2014. She is ready to go. Quality late model express style outboard powered boats considered as partial trade.

Exclusions

Owner's personal belongings.

Disclaimer

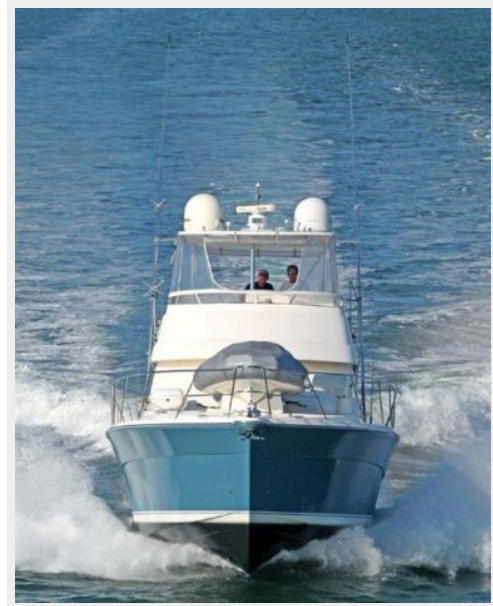
The Company offers the details of this vessel or yacht in good faith but cannot guarantee or warrant the accuracy of this information nor warrant the condition of the vessel. A buyer should instruct his representatives, agents, or his surveyors, to investigate such details as the buyer desires validated. This vessel or yacht is offered subject to prior sale, price change, or withdrawal without notice.

PHOTOS

Running



Bow View



Forward Deck



Stern



Forward Deck



Forward Deck / Pulpit



Forward Deck/Tender



Forward Deck/Tender



Cockpit



Cockpit



Cockpit



Engine Room Access



Cockpit



Cockpit



Flybridge



Flybridge/Helm



Flybridge Helm



Flybridge Helm Seating



Flybridge



Flybridge Helm



Flybridge



Salon



Salon



Salon



Galley



Galley



Galley



Dinette



Dinette



Stairs To Cabins



Forward Stateroom



Forward Stateroom



Forward Stateroom



Head



Head



Guest Stateroom 1



Guest Stateroom 1



Guest Head



Guest Stateroom 2



Laundry



Engine Room



Engine Room



Engine Room



Engine Room



Engine Room



Engine Room



Engine Room



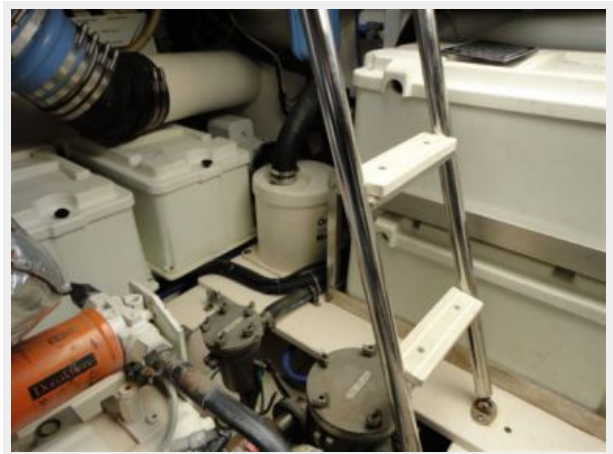
Engine Room



Engine Room



Engine Room



Engine Room



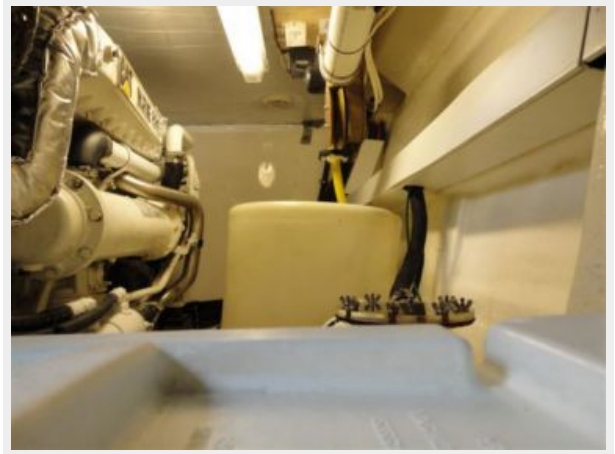
Engine Room



Engine Room



Engine Room



Engine Room



Engine Room



Engine Room



Engine Room



Engine Room



Engine Room



Engine Room



Engine Room



Engine Room



Engine Room



Engine Room



Engine Room



CONTACTS

Andrey Shestakov, leading yacht broker of the sales department of Shestakov Yacht Sales Inc. Shestakov Yacht Sales Inc., the official representative of the Miami/Fort Lauderdale FL headquarters.

Contact details

Email: andrey@shestakovyachtsales.com

Web: shestakovyachtsales.com/en/

Telephones

USA: +1(954)274-4435

Office hours

Monday – Saturday: **9:00 - 21:00** EDT

Sunday: **closed**

Address



Harbour Towne Marina, 850 NE 3rd St,
STE 213, Dania, FL 33004