

## DOWN TIME TOO — RIVIERA



**Судостроитель:** RIVIERA

**Год постройки:** 2008

**Модель:** Катер для спортивной рыбалки

**Цена:** **ЦЕНА ЯХТЫ ПО ЗАПРОСУ**

**Местонахождение:** United States

**Длина общая:** 45' 0" (13.72m)

**Ширина:** 15' 9" (4.80m)

**Мин. осадка:** 3' 11" (1.19m)

**Крейс. скорость:** 28 Kts. (32 MPH)

**Макс. скорость:** 32 Kts. (37 MPH)

Купить **Down Time Too — RIVIERA** а также выбрать подходящую вам яхту из нашего каталога яхт вам поможет опытный яхтенный брокер Андрей Шестаков. На сегодняшний день компания **Shestakov Yacht Sales Inc.** имеет большое количество яхт в собственном списке продаж, а также тесно сотрудничает со всеми крупными яхтенными производителями по всему миру.

Для того чтобы купить яхту **Down Time Too — RIVIERA** а также проконсультироваться по любому вопросу связанному с покупкой, продажей, чартером яхт позвоните по телефону **+7(918)465-66-44**.

# ОГЛАВЛЕНИЕ

ОГЛАВЛЕНИЕ	2
ХАРАКТЕРИСТИКИ	6
Обзор	6
Основная информация	6
Размеры	6
Скорость, вместимость и масса	6
Размещение	6
Корпус и палуба	7
Информация о двигателе	7
ПОДРОБНОЕ ОПИСАНИЕ	8
Down Time Too	8
Accommodations	8
Galley	8
Electrical	8
Electronics & Navigation	9
Deck Equipment	9
Engine & Mechanical Equipment	10
Fishing Equipment	10
Additional Equipment	10
Comments	11
Salesman's Comments	11
Исключения	11
Отказ от ответственности	11
ФОТОГРАФИИ	12
Bow View	12
Running	12
Stern	12
Forward Deck	12

---

Forward Deck	13
Forward Deck / Pulpit	13
Forward Deck/Tender	13
Forward Deck/Tender	13
Cockpit	13
Cockpit	13
Engine Room Access	14
Cockpit	14
Cockpit	14
Cockpit	14
Flybridge	14
Flybridge/Helm	14
Flybridge Helm	15
Flybridge Helm Seating	15
Flybridge	15
Flybridge Helm	15
Flybridge	16
Salon	16
Salon	16
Salon	16
Galley	17
Galley	17
Dinette	17
Galley	17
Dinette	18
Stairs To Cabins	18
Forward Stateroom	18
Forward Stateroom	18
Head	19

---

---

Forward Stateroom	19
Head	19
Guest Stateroom 1	19
Guest Head	20
Guest Stateroom 1	20
Guest Stateroom 2	20
Laundry	20
Engine Room	21
Engine Room	21
Engine Room	21
Engine Room	21
Engine Room	21
Engine Room	21
Engine Room	21
Engine Room	22
Engine Room	22
Engine Room	22
Engine Room	22
Engine Room	22
Engine Room	22
Engine Room	22
Engine Room	22
Engine Room	23
Engine Room	23
Engine Room	23
Engine Room	23
Engine Room	23
Engine Room	23
Engine Room	23
Engine Room	24
Engine Room	24
Engine Room	24
Engine Room	24

---

---

Engine Room	24
Engine Room	24
Engine Room	25
Engine Room	25
КОНТАКТЫ	26
Контактная информация	26
Телефоны	26
Время работы	26
Адрес	26

# ХАРАКТЕРИСТИКИ

## Обзор

**OWNER MOTIVATED! \$34,000 PRICE REDUCTION! BRING OFFERS!**

## Основная информация

**Тип судна:** Катер для спортивной рыбалки

**Подкатегория:** Convertible

**Модельный год:** 2008

**Год постройки:** 2008

**Страна:** United States

**Открытая палуба мостика:** Да

**Кубрик:** Да

## Размеры

**Длина общая:** 45' 0" (13.72m)

**Ширина:** 15' 9" (4.80m)

**Мин. осадка:** 3' 11" (1.19m)

## Скорость, вместимость и масса

**Крейс. скорость:** 28 Kts. (32 MPH)

**Макс. скорость:** 32 Kts. (37 MPH)

**Водоизмещение:** 39400 Pounds

**Вместимость воды:** 132 Gallons

**Вместимость сточного бака:** 40 Gallons

**Объем топливного бака:** 608 Gallons

## Размещение

**Всего кают:** 3

**Спальные места:** 6

**Всего ком. состава:** 2

---

## Корпус и палуба

---

**Материал корпуса:** Fiberglass

---

## Информация о двигателе

---

**Двигатели:** 2

**Производитель:** Caterpillar

**Модель:** C12

**Тип двигателя:** Inboard

**Тип топлива:** Diesel

---

# ПОДРОБНОЕ ОПИСАНИЕ

---

## Down Time Too

---

**OWNER MOTIVATED! \$34,000 PRICE REDUCTION! BRING OFFERS!** Riviera is the premiere example of this innovative model. Flybridge stairs, the latest generation hull, layout, and flybridge designs, and a separate pump room for non-mechanical systems are just a few of the ways this is improved from previous Riviera models. This boat features a Frank Mulder-designed running surface with prop pockets and underwater exhaust for an extremely dry, soft ride with great efficiency. Multiple watertight compartments and a full collision bulkhead forward make this one of the safest, toughest boats on the market. The level of engineering, both on the factory and aftermarket sides, is extremely high. Power and Motoryacht Magazine tested this particular boat in 2008. The very favorable review is available on their web site. Please take a look at the Full Specs to see the extent and thoughtfulness of her equipment.

## Accommodations

---

Forward master stateroom features a walkaround queen berth with ample storage underneath. TV/DVD with HD Sat TV feed and DVR. Port stateroom features twin berths with filler cushion and sheets that convert into a queen berth. TV/DVD with HD Sat TV feed and DVR. Starboard stateroom has over/under berths and ample storage. The salon has custom Amtico teak and holly flooring that extends to the lower companionway with thresholds at each stateroom. There is also a custom cabinet for the upgraded salon Sony Bravia HD TV. The TV flips up to reveal the boat's DVR, wireless internet, and other electronics modules.

## Galley

---

Corian countertops with stainless steel sink and Grohe fixtures.

- Vitrefrigo stainless steel drawer-type fridges (2) and freezer.
- GE Microwave/ Convection oven.
- Fisher and Paykel drawer dishwasher.
- Dedicated storage for dishes and glassware.
- Beverage fridge in salon with icemaker.

## Electrical

---

All 33 interior lights were replaced in 2009 with LEDs to minimize heat dispersion and power usage.



- 13.5 Kw ONAN EQD Generator with hard sound shield.
- 24 volt electrical system allows the greater loading needed today.
- 50 amp 125/250 volt shore power cord with Glendinning Cablemaster with wireless remote. Cord upgraded to 75'

## Electronics & Navigation

The electronics suite consists of systems often only seen on much larger vessels, with the capability to navigate and maintain communications almost anywhere in the world.

- Dual 12" Raymarine G120 monitors interfaced with:
- 12KW Super HD open array radar
- 3KW DSM400 Sounder Module linked to an in-hull oil bath transducer
- SR100 Sirius Weather Module
- AIS250 AIS Receiver
- (2) GPM400 Processors
- Remote keyboard to use system through salon television
- Raymarine ST8001+ Autopilot
- Raymarine ST60 Sat TV with HD receivers and DVR's to each of the three TV's aboard as well as the flybridge G Series monitors.
- KVH F55 Tracphone Sat Data system
- ACR RCL100D 24v Spotlight
- ICOM M422 VHF with hailer
- Upgraded flybridge stereo with iPod interface and Poly Planar Platinum speakers
- SeaKey security system with Geofence
- Cameras to Salon and Engine Room
- Lifetag Man Overboard System
- Airmar weather station

## Deck Equipment

Stars and Stripes hull paint in AwlCraft2000 paint including engine intakes and bow pulpit underside. Switlik life raft in hard canister on foredeck. Custom 316-gauge stainless steel bow rail. Stainless steel anchor fitted as main. Spare 45# Danforth as spare in stbd anchor locker. 23 cup holders on flybridge with custom drainage system.

- Zodiac Projet 350 Jet Tender with the following upgrades:
- Sony waterproof AM/FM CD Player
- Steelhead SM1000 1000' Davit with remote rotation, luff,

- Upgraded Battery Switch
- 2 AGM Batteries
- 4 Revere Suspender-style Vests
- 12 volt air pump
- Pressure Gauge
- Lift Harness
- Depth Sounder
- Custom silver Stamoid cover.
- and extension. The davit is Awlgrippd to match the deck.
- STIDD Low Back Admiral helm seats with optional Ladderback teak trim and custom covers.
- UMT custom removable chocks on foredeck for tender.
- Glendinning HoseMaster in cockpit

## Engine & Mechanical Equipment

All pumps, fittings, through-hulls, etc., in engine room labeled. Custom Diamond Plate flooring to walkway between motors. Separate mechanical space houses the water heater, air conditioning systems, battery chargers, water filters, and other systems that are best kept apart from the engine room's inherent heat and moisture. Full Cat and ONAN service kits including a spare raw water pump for the motors. VEEM Interceptor props with original VEEMs stored as spares in custom lazarette storage.

- Twin Disc EC300 Quickshift transmissions with built-in trolling valves and variable idle.
- Aqualarm exhaust temperature alarms.
- Yacht Controller wireless remote control linked to the boat's motors, bow thruster, and windlass.
- Block heaters.

## Fishing Equipment

- Transom livewell with remote circulation, fill, and lighting.
- Overhead hidden rod storage in salon with custom-spec'd rod holders.
- Cockpit freezer with thermostat that allows it to be adjusted from deep freeze to refrigerator.
- Four no-bolt Release rod holders in addition to stock rod holders.
- Rocket launcher on flybridge.
- Plate in deck for fighting chair.

## Additional Equipment

HRO700 700GPD watermaker with charcoal and infrared filters. Custom washer system for

---

flybridge enclosure with dedicated fresh water pump and controls at the helm station.

- 3 Sea Vision SV19 24v underwater lights

## Comments

---

This boat features a Frank Mulder-designed running surface with prop pockets and underwater exhaust for an extremely dry, soft ride with great efficiency. Multiple watertight compartments and a full collision bulkhead forward make this one of the safest, toughest boats on the market. The level of engineering, both on the factory and aftermarket sides, is extremely high. Power and Motoryacht Magazine tested this particular boat in 2008. The very favorable review is available on their web site.

## Salesman's Comments

---

Here is a great opportunity to own an absolutely loaded late model 45 Rivera convertible. She is on her second owner since new and has been professionally maintained her entire life. "Down Time Too" has realized over \$300K in upgrades by her two owners and is now equipped with just about every option you would ever need including a Yacht Controller system. Her molded steps to the flybridge also make her a very safe and accommodating arrangement for everyone on board. Fresh bottom paint July 2014. Engine/generator fluid service Aug 2014. Professional detailing Sept 2014. She is ready to go. Quality late model express style outboard powered boats considered as partial trade.

## Исключения

---

При продаже яхты исключаются личные вещи владельца.

## Отказ от ответственности

---

Компания предоставляет описание судна или яхты добросовестно, но не может гарантировать точность этой информации, а также не ручается за техническое состояние. Покупатель должен проинструктировать своих агентов или оценщиков исследовать представленную информацию более подробно, по собственному желанию. Продажа судна или яхты, изменение цены или снятие с продажи будет происходить без предварительного уведомления.

# ФОТОГРАФИИ

**Running**



**Bow View**



**Forward Deck**



**Stern**



**Forward Deck**



**Forward Deck / Pulpit**



**Forward Deck/Tender**



**Forward Deck/Tender**



**Cockpit**



**Cockpit**





**Cockpit**



**Engine Room Access**



**Cockpit**



**Cockpit**



**Flybridge**



**Flybridge/Helm**



**Flybridge Helm**



**Flybridge Helm Seating**



**Flybridge**



**Flybridge Helm**



**Flybridge**



**Salon**



**Salon**



**Salon**





**Galley**



**Galley**



**Galley**



**Dinette**



**Dinette**



**Stairs To Cabins**



**Forward Stateroom**



**Forward Stateroom**



**Forward Stateroom**



**Head**



**Head**



**Guest Stateroom 1**





**Guest Stateroom 1**



**Guest Head**



**Guest Stateroom 2**



**Laundry**



**Engine Room**



**Engine Room**



**Engine Room**



**Engine Room**



**Engine Room**



**Engine Room**





**Engine Room**



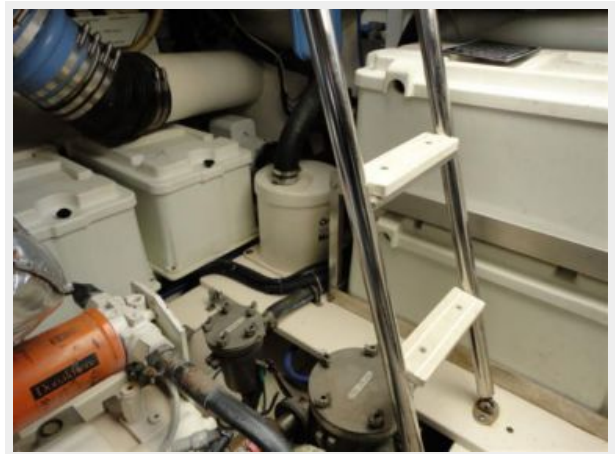
**Engine Room**



**Engine Room**



**Engine Room**



**Engine Room**



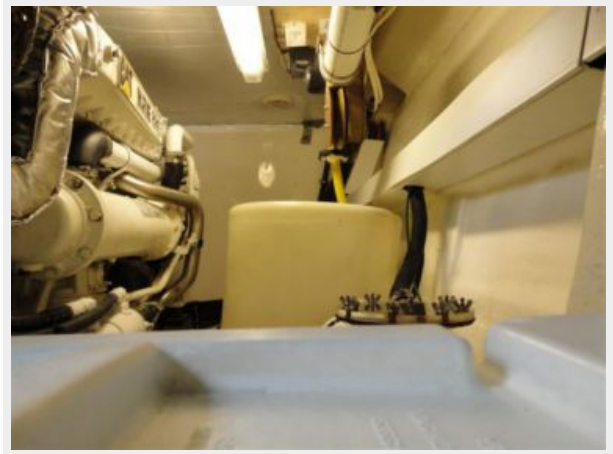
**Engine Room**



**Engine Room**



**Engine Room**



**Engine Room**



**Engine Room**



**Engine Room**

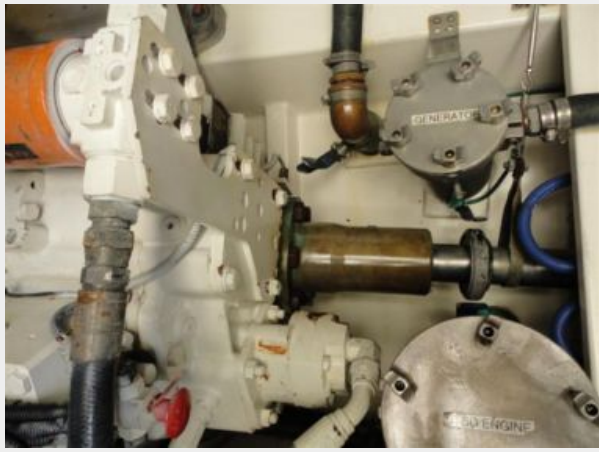


**Engine Room**





Engine Room



Engine Room



Engine Room



Engine Room



Engine Room



Engine Room





**Engine Room**



**Engine Room**



# КОНТАКТЫ

---

Андрей Шестаков (Andrey Shestakov) – ведущий яхтенный брокер отдела продаж яхт и судов компании Shestakov Yacht Sales Inc. Официальный представитель Shestakov Yacht Sales Inc. для русскоговорящих клиентов в центральном офисе компании в Майами/Форт Лодердейл/Флорида/США.

## Контактная информация

---

Email: [andrey@shestakovyachtsales.com](mailto:andrey@shestakovyachtsales.com)

Web: [shestakovyachtsales.com](http://shestakovyachtsales.com)

## Телефоны

---

Краснодарский край: **+7(918)465-66-44**

США, Майами, Флорида: **+1(954)274-4435**

## Время работы

---

Понедельник – Суббота: **9:00 - 21:00**  
EDT

Воскресенье: **Закрито**

## Адрес

---



Harbour Towne Marina, 850 NE 3rd St,  
STE 213, Dania, FL 33004