

MARLENE SEA III — OCEAN ALEXANDER



Builder: OCEAN ALEXANDER

Year Built: 2013

Model: Motor Yacht

Price: PRICE ON APPLICATION

Location: United States

LOA: 90' 0" (27.43m)

Beam: 22' 5" (6.83m)

Min Draft: 5' 10" (1.78m)

Max Draft: 6' 3" (1.91m)

Our experienced yacht broker, Andrey Shestakov, will help you choose and buy a yacht that best suits your needs **Marlene Sea III — OCEAN ALEXANDER** from our catalogue. Presently, at Shestakov Yacht Sales Inc., we have a wide variety of yachts available on our sale's list. We also work in close contact with all the big yacht manufacturers from all over the world.

If you would like to buy a yacht **Marlene Sea III — OCEAN ALEXANDER** or would like help answering any questions concerning purchasing, selling or chartering a yacht, please call **+1(954)274-4435**

TABLE OF CONTENTS

TABLE OF CONTENTS	2
SPECIFICATIONS	5
Basic Information	5
Dimensions	5
Speed, Capacities and Weight	5
Accommodations	5
Hull and Deck Information	5
Engine Information	6
DETAILED INFORMATION	7
Accommodations/Interior Decor	7
Construction	13
Mechanical	14
Electrical	17
Plumbing	19
Owner Added Custom Items	21
Exclusions	21
Exclusions	21
Disclaimer	21
PHOTOS	23
Salon	23
Salon	23
Salon	23
Formal Dining	23
Formal Dining	23
Formal Dining / Salon Bar	23
Custom Swing Door into Formal Dining & Galley	24
Salon Bar	24
Custom Sliding Privacy Doors Between Galley & Forward Dinette	24

Custom Sliding Privacy Doors Between Galley & Forward Dinette	24
Day Head	25
Galley	25
Galley	25
Galley	25
Galley Dinette	25
Pilothouse	25
Pilothouse Dinette	26
Pilothouse Helm	26
Pilothouse Helm	26
Pilothouse Helm	26
Foyer	26
Laundry	26
Laundry	27
Master Stateroom	27
Master Stateroom	27
Master Stateroom	27
Master Stateroom	27
Master Stateroom	27
Master Closet	28
Master Head	28
Master Head	28
Master Head	28
Custom Vanity with Stool in "Her" Side of Head	29
VIP Stateroom - 1	29
VIP Stateroom - 1	29
VIP Stateroom - 1	29
VIP Stateroom - 1 Head	29
VIP Stateroom - 1 Head	29

VIP Stateroom - 2	30
VIP Stateroom - 2	30
VIP Stateroom - 2	30
VIP Stateroom - 2 Head	30
Crew Lounge	30
Crew Lounge	30
Flybridge Bar - Custom Teak Deck	31
Custom Flip-Out Life Raft Holders	31
Customized rail on Flybridge for Dinghy Placement	31
Captain's Cabin	31
Engine Room	32
Engine Room	32
Layout	32
Engine Room	32
Layout	32
CONTACTS	33
Contact details	33
Telephones	33
Office hours	33
Address	33

SPECIFICATIONS

Basic Information

Category: Motor Yacht	Sub Category: Sky Lounge
Model Year: 2013	Year Built: 2013
Country: United States	

Dimensions

LOA: 90' 0" (27.43m)	Beam: 22' 5" (6.83m)
Min Draft: 5' 10" (1.78m)	Max Draft: 6' 3" (1.91m)
MFG Length: 92' 5" (28.17m)	

Speed, Capacities and Weight

Displacement: 209000 Pounds	Water Capacity: 650 Gallons
Holding Tank: 200 Gallons	Fuel Capacity: 3000 Gallons

Accommodations

Total Cabins: 3	Sleeps: 6
Crew Cabin: 2	

Hull and Deck Information

Hull Material: Fiberglass	Hull Configuration: Modified V-Hull
---------------------------	-------------------------------------

Engine Information

Engines: 2

Manufacturer: MTU

Model: 12V2000

Engine Type: Inboard

Fuel Type: Diesel

DETAILED INFORMATION

Accommodations/Interior Decor

Interior Décor:

- Sapelli paneling and cabinetry in semi-gloss
- High gloss countertops
- High quality European door locks
- Cedar-lined, hanging locker with auto lighting
- Majilite Fabric for lower walkway walls
- Fiberglass flooring prepared for carpet, except wood flooring in Skylounge & fore dinette
- Concealed hinges throughout interior cabinets with auto soft closing function that prevents a kitchen cabinet door from slamming, as it slowly and silently brings the door to a closed position
- Ergonomically designed mattresses and settees
- Mattresses for berths (independent his/her construction allowing for disturb free movement during sleep)
- Whirlpool stacked washer/dryer (Commercial quality, Energy star washer/dryer with generous 2.4cu.ft. capacity) in lower foyer
- Refrigerator and icemaker in lower foyer
- Pattern foyer granite floor in line with Christensen
- Grey Textus marble countertop for cabinet in foyer
- Six additional Salon dining light fixtures

Master Stateroom:

- “Floating” King sized berth
- Two “floating” nightstands with Grey Textus marble countertops
- Bureau with chest of drawers at starboard side and Burl accents
- Hidden safe in hanging locker
- Fixed windows on hull side
- Fiberglass floor prepared for carpet
- Custom headboard with recessed indirect lighting
- Cedar-lined, twin full-height hanging locker with automatic lighting and lighting front glass drawers
- Grey Textus marble countertop for AV cabinet
- Quieter A/C discharge on ceiling

Crew Quarters:

- Kitchenette (microwave & refrigerator)
- Sapelli paneling and cabinetry
- Crew Quarters include one captain room & one working bench on crew cabin with a Pullman berth
- Cedar-lined hanging locker with automatic lighting
- American Tabesco granite countertop in lounge
- Storage locker
- Amtico flooring
- Open crew layout with extra porthole and two removable chairs under settee in crew lounge
- Two removable chairs under settee
- Storage under Aft Deck settee, accessible from Crew Quarters (extra storage)
- New full-height storage shelves in crew
- Crew wet closet with ventilation grills connected to blower for quick drying

Heads:

- Sapelli paneling and cabinetry
- White Aurora marble heated flooring in VIP & Port Guest
- Niger Olive granite (VIP) & American Tabesco granite countertops (Port Guest) with china sink
- Cifial & Grohe sink faucets and Grohe for shower
- Seamless fiberglass stall shower with one-piece glass door (Industry leading seamless one-piece shower stall design provides long term protection against moisture, water intrusion behind the shower panels – leading to foul odors and water damage)
- Cabinet with mirror door above sink
- Air extraction in each head shall be by low noise extraction fans
- Planus toilet system throughout
- Custom bathroom fixtures
- Stainless steel rectangular port lights with screens
- Niger Olive granite (VIP) & American Tabesco granite countertops and back splash in heads with Cifial & Grohe faucets and bone china sink
- Fiberglass seamless stall shower with one-piece glass door
- LED light mirrors above sink in VIP and Port Guest heads
- Crew Quarters with private head, shower and refrigerator

Master Head:

- Twin his-and-hers heads
- Sconces with dimmers above sink
- Lockers beside heads
- Clear glass wall between shower room and head
- White Aurora marble shower wall and heated floor in head
- Planus toilets with bidet

Galley:

- Sapelli panel cabinetry
- Galley storage cabinetry with hidden hinges
- Puteulanus Jade granite countertops
- Crepito marble flooring
- Franke professional series kitchen sink with pull out tap
- Exhaust blower
- Overhead dish locker forward & aft
- 30" JennAir electric cook top
- 24" Gaggenau electric oven
- Sub-Zero Refrigerator/freezer
- Whirlpool garbage disposal
- 24" Fisher/Paykel dishwasher
- 15" Whirlpool trash compactor
- Seagull water purifier (ADEX design award winner with filtration to 0.1 microns & EPA certification for microbiological purification)
- Potholder at Galley
- Crossed reinforced bulkhead in lieu of side aluminum mullion, blending in enlarged and frameless Galley window

VIP/Guest Staterooms:

- Queen-sized berth with inner spring mattress
- Sapelli paneling and cabinetry
- FRP floor prepared for carpet
- Drawers under berth
- Cedar-lined hanging locker with automatic lighting

- Stainless steel rectangular port lights with screens in Port Guest Stateroom
- Two “floating” nightstands with American Tabesco granite tops in Port Guest Stateroom

Audio/Visual

Master Stateroom:

- LCD 42” TV with Professional A/V System with IR repeater (Dolby true HD DTS/HD XM/Sirius capable w/multiEQ that provides virtually perfect acoustical environment for up to six individual seating locations, also detects “out of phase inner” auto compensable to match w/ subwoofer & speakers. HDMI 1.3 provides high bandwidth HD video output) for true color HD reproduction.
- One Subwoofer

Skylounge:

- LCD 32” TV with Professional A/V System with IR repeater
- (Dolby true HD DTS-HD XM/Sirius capable w/multiEQ that provides virtually perfect acoustical environment for up to six individual seating locations. Also detects “out of phase inner” auto compensable to match w/ subwoofer & speakers. HDMI 1.3 provides high bandwidth HD video output) for true color HD reproduction
- Middle-Atlantic Media Rack for A/V equipment (Professional Studio Quality rack provides ease in accessing various A/V equipment. Reduces labor, damage with heavy duty 13-gauge stainless steel and interlocking corners)
- Furman power conditioner (featuring multi-stage linear amplifier tech & extreme voltage shutdown for yacht’s unstable shore/genset power)
- One subwoofer

Salon:

- LCD 55” TV with Professional A/V System with IR repeater
- (Dolby true HD DTS-HD XM/Sirius capable w/multiEQ that provides virtually perfect acoustical environment for up to six individual seating locations. Also detects “out of phase inner” auto compensable to match w/subwoofer & speakers. HDMI 1.3 provides high

bandwidth HD video output) for true color HD reproduction

- Middle-Atlantic Media Rack for A/ V equipment (Professional Studio quality rack provides ease in accessing various A/V equipment. Reduces labor, damage w/ heavy duty 13-gauge S/S and interlocking corners)
- Furman power conditioner (featuring multi-stage linear amplifier tech & extreme voltage shutdown for yacht's unstable shore/genset power)
- One subwoofer

Crew Quarters:

- LCD 24" TV & disc player on Captain & Crew Cabin's wall
- Audio stereo and video system

Dinette/Aft Deck:

- LCD 26" TV on fore dinette
- LCD 24" TV on wall (Aft Deck)

VIP/Guest Stateroom:

- LCD 24" TV & disc player on port wall (VIP)
- LCD 24" TV & disc player on wall (Port Guest)
- Audio stereo and video system

Salon:

- Sapelli paneling and cabinetry
- Cabinets port and starboard of Salon
- Custom designed window mullion
- Sub Zero wine cooler
- Sub Zero refrigerator/freezer drawers
- Enlarged and frameless windows

- Decorative ceiling treatment
- Phantom screen (for insects + pollen protection) with dedicated wood box for door
- Quieter A/C discharge blending in LED lighted mirror on Salon ceiling
- Dedicated lighting fixture at main dinning in Salon

Skylounge/Dinette:

- Sunken and extended dash with instrumentation (Skylounge)
- L-shaped dinette (Skylounge)
- Fore wood dinette table & computer desk in main deck
- Large storages at fore dinette with pre-wire cable for freezer
- Windshield defrosters
- Phantom screen (for insects + pollen protection) with dedicated wood box for door
- Watertight doors to side deck
- Wood flooring in forward dinette
- Pantograph doors in Skylounge

Main Deck/Flybridge:

(Main Deck)

- Increased headroom throughout main deck
- 2" Elliptical 316 Stainless steel handrails & stanchions, main deck 11/
- 2" on Flybridge
- 316 Stainless steel cleats and port lights
- Circular fiberglass stairs to aft deck to swim platform
- Electric stainless steel sliding doors for Salon
- Two teak flag poles, fore and aft
- Teak and stainless swim ladder, foldable
- Watertight door on transom for access to engine room/crew quarters
- Cabinet for storage, tackle center, wet bar refrigerator and LCD 24" TV
- Side boarding doors
- New functional design Aft Deck bar with slim design DVD/TV box with hidden hinge
- High bulwark with flush-mounted deck lights, bulwark side doors for boarding
- Side boarding gates in Aft Deck and midship
- Tempered and safety glass (1/2" in forward Pilothouse, 2/8" other areas) which is 80% stronger than normal glass and with a safety sandwich for protection against broken shards

- Recessed boarding ladder on starboard gunnel
- Exterior canvas cover (including windows, tables, settees, Sunpad, etc.)
- Teak Aft Deck and side walkway to midship
- Teak swim platform with teak swimsteps
- Stainless steel transom gates for pets/children protection
- Anchor chain fresh water washdown system
- Additional watertight hatch with climb-in storage chamber

(Flybridge & Skylounge)

- Skylounge with color change light
- Skylounge with day head & air condition and full size Stidd electric admiral series seats)
- White non-skid boat deck
- Cabinet including wet bar, Sub Zero wine cooler with solid panel door and storage (Skylounge)
- Wet bar with 24" Electri-Chef electric barbecue Pull-down DVD/TV on boat deck
- Boat deck sliding hatch
- Wood valance board
- Wood table
- Raised settee with table
- Day head in Skylounge
- Opener side-by-side windows with no FRP margins, and three aft windows instead of two
- Teak flooring on Flybridge aft of Skylounge

Construction

General:

- Vinylester resin
- Carbon fiber infused composite hull and decks
- Airex C79.90 PVC foam sandwich construction above water line (closed cell, cross-linked polymer foam with highest elongation in its class for great impact strength. Sound and temperature insulation with self-extinguishing properties)
- Longitudinal and lateral fiberglass stringers filled with high-density foam
- Ocean Alexander employs various techniques to reduce sound and vibration. Focusing on providing quiet and comfortable yachting environment through various proprietary techniques of controlling sound and noise transmissions. Some of these techniques include, multiple insulation barriers including reflective materials, absorptive materials,

dampening materials, air pockets and flexible and isolation mounts. Ultimately resulting in vibration/sounds levels that are industry leading and at times ½ to 1/10 of ISO6954 requirements

- Fiberglass with infusion and “Vacuum Bag Technology”
- Reinforced collision bulkhead
- Reinforced aluminum I-beam
- Alexseal painted exterior
- Frameless window
- All exterior hardware to be S/S 316
- Watertight bulkheads with further sound and temperature insulation

Hull/Bottom:

- Black boot top stripe
- Interior structural components all bonded to hull
- Three coats of Seahawk primer, hi-build epoxy barrier coat and covered with two coats of
- Seahawk self-polishing bottom paint
- Fiberglass rub rail with Stainless Steel striking plate

Deck/Pilothouse:

- White non-skid fiberglass decks
- Teak swim platform with teak steps
- Teak deck for Aft Deck and side walkways to midship
- Stainless Steel transom gates for pets/children protection
- Deck, superstructure and Flybridge with aluminum I-beam reinforcements
- Swim ladder
- Sunbrella fabric (8521 Berenson Tuxedo) on outside cushions
- Custom sun pad in fore deck
- Additional watertight hatch with climb-in storage chamber (forward of VIP and behind chain locker)
- Recessed boarding ladder on starboard gunnel
- Manual awning on boat deck

Mechanical

Main Engines:

- 2xMTU 12V2000 1920HP engines includes 24-month total warranty and 60 months for major components
- Engine alarm system, for low oil pressure and high water temperature
- Stainless steel engine beds
- Lube oil change system for engines and generators with approximately 45-gallon lube tank
- Delta-T intake/exhaust fans with variable frequency drives shall be mounted to facilitate the pushing and/or pulling of air through the machinery spaces and the providing of a high rate of air exchange. Ducts shall have fire dampers installed with manual/automatic triggering that shall be tied into the machinery shut down circuits. Ducts in way of interior living space shall be insulated and soundproofed. System of Delta-T water separator grills used on intake and exhaust sides of system
- Underwater exhausts specifically designed for Monk/Hageman tunnels
- Stainless steel rails on side of engine and stainless steel engine mounting plates
- Stabilizer with power takeoff from both engines
- Wired remote engine/thruster (non-proportional) controller with three plug-ins areas (Aft Deck, Fore Main Deck & Skylounge Helm)

Steering/Control:

- Hydraulic steering system by Hynautic/Teleflex power steering system
- Steering control station with complete instrumentation
- Stainless steel rudders with integrated zinc plates
- Dripless seal for rudder-post
- High performance computer designated and machined NIBRAL propeller – Class “S”
- Maintenance free “dripless” seals for engine shafts packing glands
- Propeller shaft Aqua 22HS; 22HS is a high-grade austenitic alloy stainless steel that provides superior corrosion resistance (comparable to Aqua 22) along with excellence toughness and high strength (comparable with Aqua 17). A no compromised approach adopted by the navies around the world
- Three Ultraleather electrical Stidd helm seats (Skylounge with 291-3601 DOE & Exterior 8521 Berenson Tuxedo)

Generator:

- 2xKohler 53KW (110V/220V @60HZ) genset includes 2-year/2,000 hour total warranty
- Generator exhausts to be water-drop type per “Centek”, “Marine Exhaust Co.” or equal

- Generator set resiliently mounted and installed with sound shield

Windlass/Mooring:

- Hydraulic windlass, Maxwell VWC4000C x 1
- Stainless steel plow type anchor 350lbs with 300' anchor chain (1/2" HT) & chain stoppers
- Integral roller and chain stopper with Maxwell anchor winches
- Two Maxwell VC2500 vertical electric rope winches for aft deck
- Reinforced anchor platform and anchoring system
- Chain counter

Thruster/Stabilizers:

- ABT hydraulic bow 40HP and stern 40HP thruster with proportional control
- Custom "Two Fin" (12 sq. ft. x 2) hi-performance
- ABT stabilizers
- ABT hydraulic stabilizers with zero speed system

Other:

- Spare conduit running from engine room to Master Stateroom, crew, Galley, etcetera
- Color-coded piping system for easy identification
- Hydraulic 1750lbs tender crane (21,000ft-lb 3 function hydraulic retracting boom, rotation and extension)
- Fire Boy fire extinguisher system with engine-shutdown feature
- Kahlenberg triple heavy-duty horn
- All engine room and machinery spaces shall be primed and top coated with polyurethane paint system
- Hepworth heavy-duty commercial grade pantograph windshield wipers & washers with intermittent function
- Detailed stringers in engine room & lazarette
- Stainless steel cap on transverse stringers in central walkway
- 2HP air compressor in engine room with multiple quick disconnect outlets
- Zinc anodes on hull bottom under engine room
- Flush LED lights installed of fluorescent in engine room, cleaner/brighter and longer lasting

Electrical

AC/DC System:

- AC outlets throughout
- Octoplex NMEA 2000 electrical control system. Based on military technology for remote activation, control and status reporting of all AC and DC breakers. Monitors all power sources (AC and DC) for voltage, frequency and amperage abnormalities and provide visual and audio alerts. Includes enhanced circuit breaker functionality with no-load indication, dimming and usage information with touch screen monitors that is user reconfigurable.
- Brown-out configurable control through auto load shedding is included where operator designated equipment (eg. navigation and other essential systems) remains powered-on while automatically switching other systems off. Octoplex NMEA 2000 Vessel system monitor system provides main access doors, tank level, bilge level and battery monitoring of current voltage and temperature. It is networked into NMEA 2000
- Octoplex system AC/DC electrical wiring is appropriately labeled throughout the yacht
- GFI (110V) AC outlet with SmartLock feature for operation error protection which exceeds the UL requirements
- AC duplex receptacles throughout the boat with GFI protection in dedicated areas
- 24V DC system throughout boat
- 12V DC generator starting system
- 12V & 24V DC electronic system

Air Conditioning:

- Cruisair chilled water system air conditioning with air handlers for central air conditioner, 3 units, total 201K BTU (Reverse Cycle capable for operating down to 40)
- Electric heater coils in entire air conditioning system for operation in below 40 degrees
- Ferinheight water
- Refrigerant type is accepted worldwide under the Montreal Protocols
- Dedicated engine room air conditioning

Shore Power Connector:

- Shore power receptacle 2x 100AMP on transom with 115' cablemaster

Lighting:

- 24V lights in all compartments
- 24V LED lights (Aerospace quality, specially tuned color temperature for Ocean Alexander that last over 100,000+ hours)
- Marine explosion-proof fluorescent lights in AC and DC configurations
- Convenience lights, lower deck and Flybridge
- Flood lights for swim platform
- Reading lights in VIP headboard
- International navigation lights
- All staterooms, Salon, dinettes and Skylounge with indirect lighting
- ACR searchlight (RCL100D/24V) with remote in Skylounge
- Spreader lights under wing mast
- Four (4) Underwater lights

Inverter/Charger:

- Inverter Package: Upgraded 40AMP charger to Victron 5000W/120A inverter/charger
- Victron battery charger (engine: 24CV60A, genset: 24V/60A)

Battery:

- Heavy-duty batteries (house banks: 1100 AH, engine batteries: 550AH, genset batteries: 490 AH)
- Battery paralleling system with control switch
- Service battery switch
- AGM Batteries with 40_to140_operating temp and industry leading low self-discharge rates 1 to 3%

Bonding System:

- Bonding system throughout

- The vessel's bonding and grounding systems shall include copper straps secured to the hull and running the full length of the vessel parallel to centerline. Engines, generators, metallic through hulls, strainers, and pump bodies shall be connected to the bonding strap using 8 AWG wire minimum or equivalent

Furuno Navigation Package NMEA2000:

- FURUNO MFD Black Box Processors
- FURUNO 6Kw 6ft Open Array Dual Ranging Radar
- FURUNO Class B AIS Integrated into Radar and Chart Plotter
- FURUNO Digital Sounder with 1Kw B260 Broadband Transducer
- 19" Marine Monitors Skylounge
- AXIS IP Camera in Engine Room and Aft Deck
- ICOM 604 VHF Skylounge
- FURUNO Autopilot System at Skylounge
- KVH HD7 Control Panel Satellite HDTV System
- Maretron DSM250 NMEA 2000 Display on crew quarter
- Maretron NMEA 2000 GPS, Depth Sounder and Weather station
- Nobeltec Navigation Computer Software
- UPS electrical protection for navigation computer
- Direct TV receiver with UPS

Other:

- Marine-grade, tinned copper wiring
- Vimar switches and outlets
- Ritchie compass 5
- Isoboost package (100AMP + 100AMP)
- iPad-integrated N2KView vessel and security monitoring package
- Telephone system throughout

Plumbing

Fresh Water System:

- High volume AC fresh-water pump

- 2mm thickness 316 stainless steel water tank with sight gauge
- Fresh-water outlet with hose for engines & generator
- Fresh-water system in 120VAC and with 24VDC backup pump
- Cold fresh-water wash down at bow, stern and boat deck
- Sea Recovery 1400G/Day water maker with auto fresh water flush operation, PH Neutralizer, UV sterilizer and Commercial Pre-filter

Hot Water System:

- Two 40-gallon water heater with high-density fiberglass insulation with high efficiency element

Fuel System:

- 4.5MM Thickness 5052 Aluminum fuel tanks with sight gauges and tested to International Standards 33CFR 510(a) with high & low fuel level alarm system
- Dual Racor fuel/water separator with Y-valves for engine & generator
- Gulfcoast Fuel Polishing system based on US Military Abrahams – M1 Tank design
- Sight gauges for all tanks

Sewage Treatment System:

- Headhunter waste treatment system (50Gal/Day)
- Grey water tanks for showers

Bilge/Discharge:

- Oversized drains to overboard
- Automatic bilge pump – The vessel shall be outfitted with automatic bilge pump with manual and automatic switches in each space as divided by watertight bulkheads. High water alarms will be mounted in each of these bilge zones
- High water bilge alarm at ever Rule bilge pump station

- One manual bilge pump
- Dry bilge area arrangement in center engine room

Deck/Flybridge:

- Dock-side water inlet
- Both sides filler for fuel tanks with individual tank vents

Owner Added Custom Items

- Atlas transformer
- Teak on flybridge aft of Skylounge
- Teak handrails in strategic areas for safety
- Custom carpet on Skylounge floor to protect wood floor
- Custom “flip-out” canister style life raft holders on flybridge aft rail
- Custom made swing door between Salon/Dining and Galley
- Custom sliding privacy panels between Galley and Dinette
- Larger teak table for crew quarters
- Custom rail on flybridge that allows for non-removal while dinghy is in place
- Privacy curtains for his/hers shower in Master Stateroom
- Custom vanity with stool in “her side” bathroom
- Full length mirror behind “her” closet door

Exclusions

All owner’s personal items. A detailed list of exclusions to be provided at time of sale upon written request.

Exclusions

Owner's personal belongings.

Disclaimer

The Company offers the details of this vessel or yacht in good faith but cannot guarantee or warrant the accuracy of this information nor warrant the condition of the vessel. A buyer should instruct his representatives, agents, or his surveyors, to investigate such details as the buyer desires validated. This vessel or yacht is offered subject to prior sale, price change, or withdrawal

without notice.

PHOTOS

Salon



Salon



Salon



Formal Dining



Formal Dining



Formal Dining / Salon Bar



Custom Swing Door into Formal Dining & Galley

Salon Bar



Custom Sliding Privacy Doors Between Galley & Forward Dinette



Custom Sliding Privacy Doors Between Galley & Forward Dinette



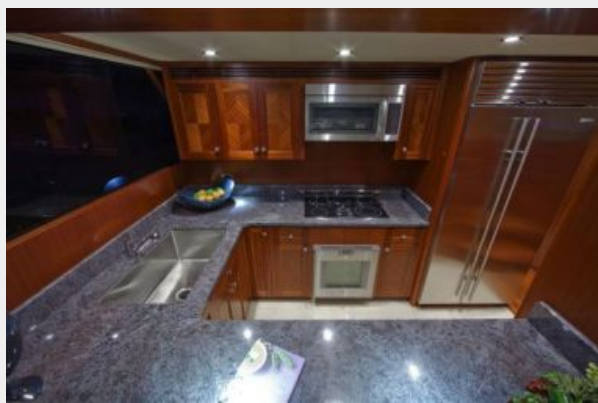
Day Head



Galley



Galley



Galley



Galley Dinette



Pilothouse



Pilothouse Dinette



Pilothouse Helm



Pilothouse Helm



Pilothouse Helm



Foyer



Laundry



Laundry



Master Stateroom



Master Stateroom



Master Stateroom



Master Stateroom



Master Stateroom



Master Closet



Master Head



Master Head



Master Head



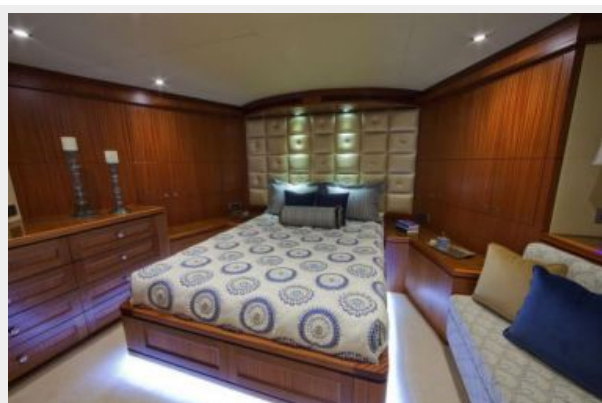
Custom Vanity with Stool in "Her" Side of Head



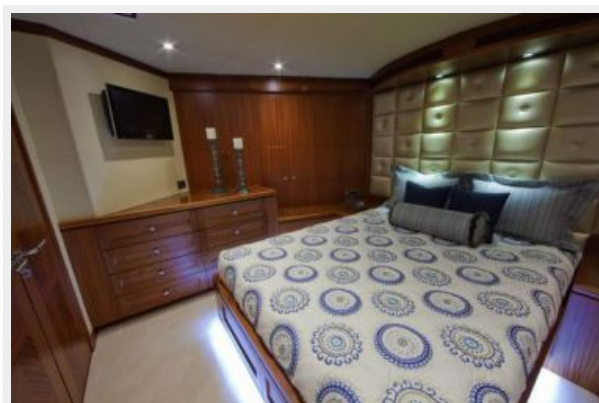
VIP Stateroom - 1



VIP Stateroom - 1



VIP Stateroom - 1



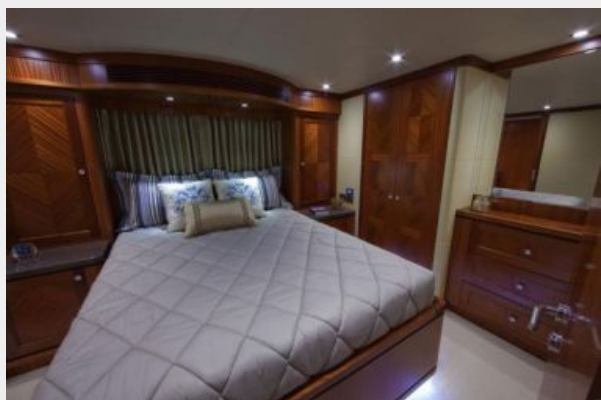
VIP Stateroom - 1 Head



VIP Stateroom - 1 Head



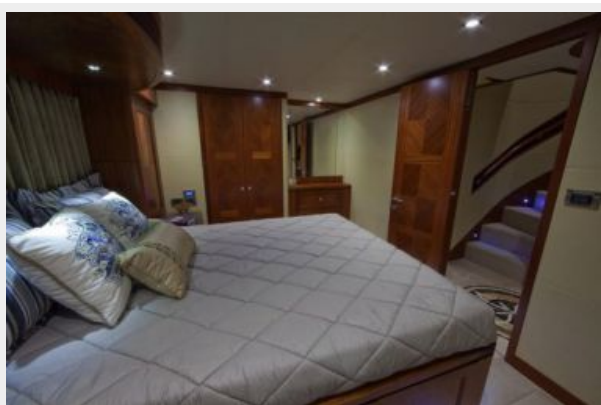
VIP Stateroom - 2



VIP Stateroom - 2



VIP Stateroom - 2



VIP Stateroom - 2 Head



Crew Lounge



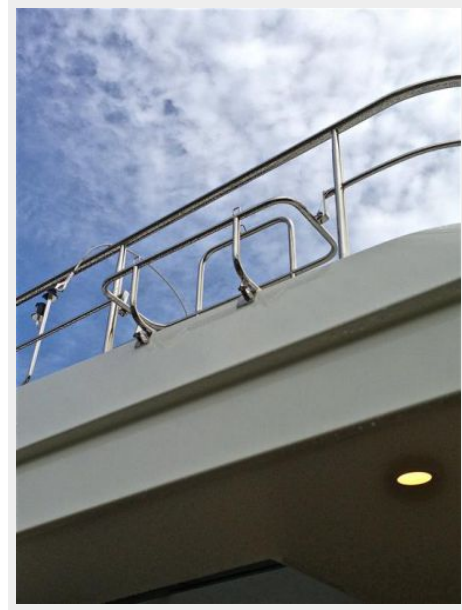
Crew Lounge



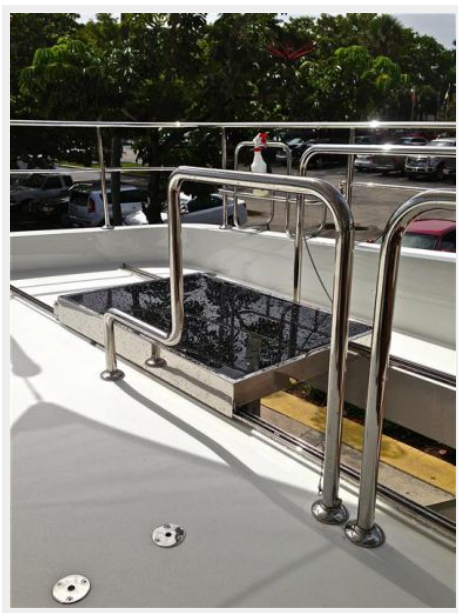
Flybridge Bar - Custom Teak Deck



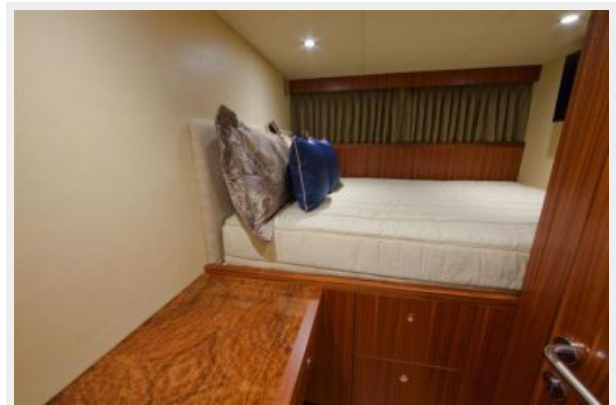
Custom Flip-Out Life Raft Holders



Customized rail on Flybridge for Dinghy Placement



Captain's Cabin



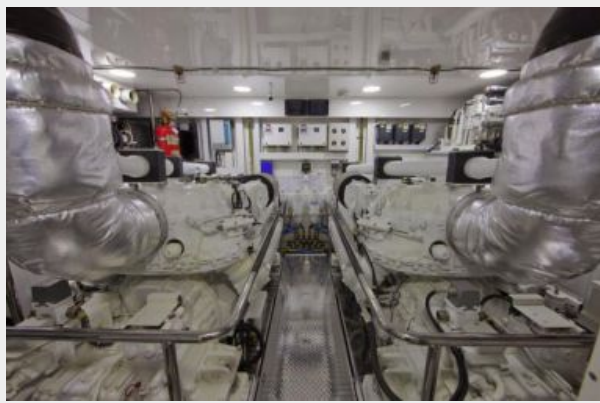
Engine Room



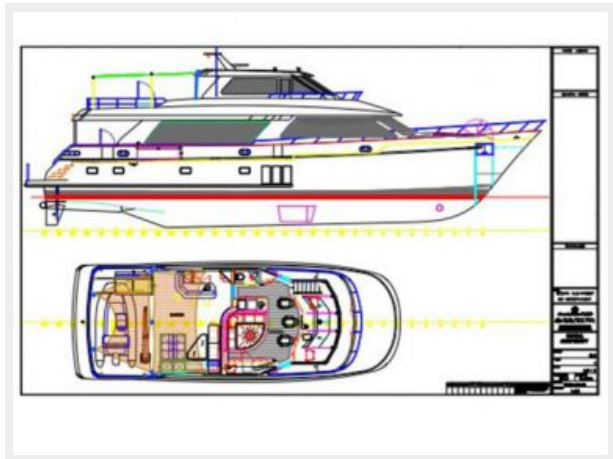
Engine Room



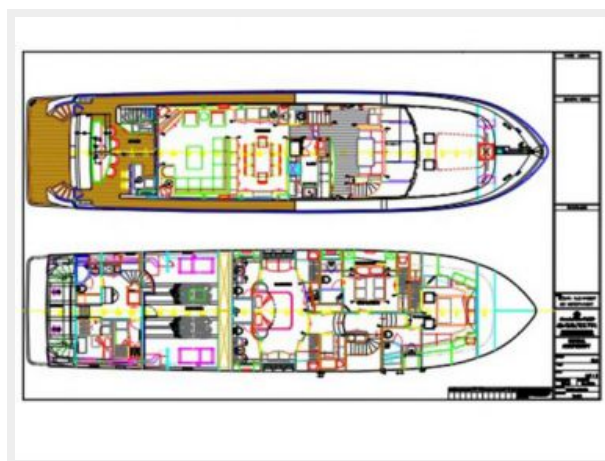
Engine Room



Layout



Layout



CONTACTS

Andrey Shestakov, leading yacht broker of the sales department of Shestakov Yacht Sales Inc. Shestakov Yacht Sales Inc., the official representative of the Miami/Fort Lauderdale FL headquarters.

Contact details

Email: **andrey@shestakovyachtsales.com**

Web: shestakovyachtsales.com/en/

Telephones

USA: **+1(954)274-4435**

Office hours

Monday – Saturday: **9:00 - 21:00 EDT**

Sunday: **closed**

Address



Harbour Towne Marina, 850 NE 3rd St,
STE 213, Dania, FL 33004