

## OUR TRADE RIVA 63 VIRTUS — RIVA



**Судостроитель:** [RIVA](#)

**Год постройки:** 2013

**Модель:** Крейсер

**Цена:** **ЦЕНА ЯХТЫ ПО ЗАПРОСУ**

**Местонахождение:** United States

**Длина общая:** 63' 0" (19.20m)

**Ширина:** 15' 9" (4.80m)

**Макс. осадка:** 5' 3" (1.60m)

Купить **Our Trade Riva 63 Virtus — RIVA** а также выбрать подходящую вам яхту из нашего каталога яхт вам поможет опытный яхтенный брокер Андрей Шестаков. На сегодняшний день компания **Shestakov Yacht Sales Inc.** имеет большое количество яхт в собственном списке продаж, а также тесно сотрудничает со всеми крупными яхтенными производителями по всему миру.

Для того чтобы купить яхту **Our Trade Riva 63 Virtus — RIVA** а также проконсультироваться по любому вопросу связанному с покупкой, продажей, чартером яхт позвоните по телефону **+7(918)465-66-44**.

# ОГЛАВЛЕНИЕ

ОГЛАВЛЕНИЕ	2
ХАРАКТЕРИСТИКИ	4
Обзор	4
Основная информация	4
Размеры	4
Скорость, вместимость и масса	4
Размещение	4
Корпус и палуба	5
Информация о двигателе	5
ПОДРОБНОЕ ОПИСАНИЕ	6
Description	6
Features	6
Lounge	7
Galley	7
Helm Station	8
Electrical Equipment	8
Systems	9
Safety Equipment	10
Hull/ Deck	10
Windows/ Hatches	11
Cockpit	11
Engine Room	12
Master Stateroom and Head	12
VIP Stateroom and Head	13
Guest Stateroom and Day Head	14
Crew Cabin	15
Исключения	16
Отказ от ответственности	16

---

ФОТОГРАФИИ	17
КОНТАКТЫ	22
Контактная информация	22
Телефоны	22
Время работы	22
Адрес	22

# ХАРАКТЕРИСТИКИ

## Обзор

Over \$300,000 in upgrades since new including custom interior, leather wrapped stair case, stern thruster, Marquipt sea stair boarding ladder, upgraded stereo, cockpit Mister system and full Garmin touch screen electronics.

## Основная информация

Тип судна: Крейсер

Модельный год: 2014

Год постройки: 2013

Страна: United States

Верх: Open W/Bimini Top

## Размеры

Длина общая: 63' 0" (19.20m)

Ширина: 15' 9" (4.80m)

Макс. осадка: 5' 3" (1.60m)

Длина привального бруса: 63' 0"  
(19.20m)

## Скорость, вместимость и масса

Водоизмещение: 71209 Pounds

Вместимость воды: 174 Gallons

Объем топливного бака: 845 Gallons

## Размещение

Всего кают: 3

Всего коек: 4

Спальные места: 6

Всего ком. состава: 3

Каюты экипажа: 1

Комм. состав экипажа: 1

---

## Корпус и палуба

---

**Материал корпуса:** Fiberglass

**Цвет корпуса:** Light Silver

---

## Информация о двигателе

---

**Двигатели:** 2

**Производитель:** MAN

**Модель:** 1360 CR

**Тип двигателя:** Inboard

**Тип топлива:** Diesel

---

# ПОДРОБНОЕ ОПИСАНИЕ

---

## Description

---

### 2014 Riva 63 Virtus "Our Trade"

**This 2014 Riva has over \$300,000 in upgrades since new including:**

Custom interior, leather wrapped stair case, stern thruster, Marquipt sea stair boarding ladder, upgraded stereo, cockpit Mister system and full Garmin touch screen electronics.,

## Features

---

**Classification:** RINA Class A/NMMA US Specs

- Cockpit & sidewalk in teak
- Wet bar w/ ice maker, sink & grill
- Customized tempered glass windshield w/ stainless steel frame
- Custom made Riva clips
- Stainless steel handrails
- Custom made whale tail mastil w/ electronics
- Automatic passerelle
- Automatic stainless steel swim ladder
- Garage for tender w/ automatic launch/hauling system
- Aft & bow sunpad
- Side walk access
- Completely automatic bimini top
- Bow sunpad
- Bow and stern thruster
- Misters
- Upgraded Stereo
- Generator 20kW
- Anchor & docking electronic switches
- Shore power
- Aft locker w/ shower hot/cold water mixer
- Bathroom footboard in anti-slip varnished teak
- Anti-fire system
- Garmin electronics- GPS w/ 14in. screen, -Plotter, Radar and Depth Sounder
- Autopilot and VHF
- Searolling light
- Air conditioning 60,000 BTU
- Hi-Fi TV system
- Audio-video configuration

- Cooking top ceramic 60 Hz in galley
- Fridge & freezer 60 Hz
- Microwave oven 60Hz

## Lounge

---

### Layout Lounge:

- Carpeted flooring with padding underneath
- Ceiling upholstered with vinyl fabric, Ice White color lacquering and wooden inserts
- Cushions 40 X 40 cm (3)
- Electric outlet 230 V
- Hi-Fi system with Blu-ray DVD player, docking station
- Leather sofa with 5 seats
- Leather-covered chairs (4)
- LED TV 32"
- Lockers
- Porthole housing with hull window and aluminium Venetia blinds
- Spotlights
- Stainless steel handrail and ladder with anti-slip surface wooden steps to access below deck
- Walls and furniture in wood
- Wooden table with base in stainless steel

## Galley

---

- Anti-slip wooden flooring
- Combined electric and microwave oven
- Concealed Corian worktop in the unit with incorporated wash basin and mixer tap
- Dishwasher
- Electric outlets 230 V
- Extractor hood with direct outboard discharge
- Fire extinguisher
- Glass ceramic cooking top with pan holder
- Glossy lacquered ceiling
- Handrails in stainless steel and wood
- Housing for pots and pans, tableware and cutlery
- Porthole housing with Venetian blinds
- Refrigerator 130lt and freezer 90lt
- Spotlights
- Trash bin
- Wooden bulkheads and furniture

---

## Helm Station

---

- Acoustic alarm for water in bilge
- Adjustable searchlight control panel
- Anchor chain digital counter
- Automatic pilot with rudder angle gauge interfaced with plotter/GPS
- Garmin Radar /plotter
- Compartment for personal belongings
- Echo-sounder with log
- Electric bow thruster control panel with joystick
- Electro-hydraulic power assisted steering system
- Emergency activation/shutoff panel in "shut-down" unit (engines, generator and extractors - shut down in the engine room) with cylinder status gauge
- Engine room high temperature acoustic alarm
- Fiberglass helm station, covered steering wheel, complete engine instrumentation, magnetic compass, controls, alarms, rev. counter, hour counter and ammeters for the alternators
- Fire extinguisher
- Flooring in teak
- Gauge panel with running lights showing when bulbs need replacing
- On-board computer with the following functions: trim tabs and rudder position, recommended trim position, consumption, water and fuel tanks filling status, alarms: bilge, hatch open
- Swimming ladder out, riser high temperature alarm
- Pilot seat cover
- Socket (cigarette lighter type) 12V
- Upholstered two-seater pilot unit with manual foldable seat
- VHF radio telephone with DSC
- Water Racor filter alarm
- Windscreen washer-wiper control panel

---

## Electrical Equipment

---

- 230 V outlets in various areas
- Automatic battery charger
- Battery charger for generator-Battery cut offs for appliances to batteries
- Battery parallel facility for starting up engines
- Bonding system with porous copper plate
- Breaker box
- Carling switch 100 A for 240 V shore supply
- Cathodic protection with zinc anodes
- Engine battery set low water loss
- Generator 20 Kw 60 Hz 230 V with silencer box



- Generator battery low water loss
- Glendinning 100 A 4 poles (20 m)
- Glendinning remote control
- Ground fault interrupters 120 V – 6 Ma
- Hatch control sensor
- Internal American sockets: double 120 V socket on every box
- Isolation transformer 25 Kva
- Lighting 24 V
- Manual battery switch for generator
- Measuring instruments: voltmeter
- Porous ground plate top dedicated to electronics dashboard
- Preparation for decoder: cable 120 V F connector TV sat, antenna cables in all cabins
- Preparation for TV: cable 120 V F connector TV antenna cables
- Service battery set low water loss
- Shore power GFI 100 A – 30 Ma
- Switch panel
- Tanks level monitoring
- Voltage reducer for VHF 24/12 V

## Systems

---

- Air conditioning and heating system American version (outlet in the bathroom included)
- Air extraction system in the engine room
- Automatic extinguisher in engine room with external control
- Bilge discharge system with a 208-litre centralized tanks and pump
- Centralized bilge discharge system connected to multi-function pump with switch for each area
- Chain seawater washing system
- Device for remote closure of the engine fuel supply valves and generator controlled by the firefighting system
- Drainage for washers
- Electro-hydraulic power assisted steering system
- Emergency bilge discharge system using main engine suction system in case of emergency (2)
- Fire-fighting system in the engine room and system area with automatic/manual activation
- Fresh water system
- Fresh water tank in PVC (660 lt)
- Grey water discharge system with independent holding tank and electric pump
- Grey water 3 way valve in galley
- Hot water system with 80-liter boiler
- Independent sea water intake for water with filter
- Trim tabs system (flaps)
- WC system with freshwater flush

---

## Safety Equipment

---

- Life raft for 6 people (2)
- NMMA certification
- NMMA compliance plate

---

## Hull/ Deck

---

- "Avon for Riva" tender haulage/launch system -with electric winch and rollers
- Access to the swimming platform with fiberglass steps and anti-slip surface flooring
- Adjustable searchlight controlled from the helm station
- Air inlet covers (2)
- Bow sunpad cover
- Bow sunpad with upholstered cushions, side stainless steel handrail and plexiglass glass holders
- Bow watertight bulkhead
- Concealed electro-hydraulic sunshade awning
- Concealed stainless steel electro-hydraulic gangway with automatic stanchions and teak flooring
- Concealed stainless steel electro-hydraulic swimming ladder built into the swimming platform
- Electric anchor winch controlled 2300W 24V from the helm station and with bow control
- Electric bow thruster 10,7 Hp
- Electric winch for stern warping 1500W 24V with foot control
- Electro-hydraulic stern garage fibreglass hatch with lockers for storing ropes and life ring-illuminated float
- Fiberglass antenna support and signal mast with painted supports
- Fiberglass deck with side walkways in Ice White colour anti-slip finish floor
- Fiberglass forepeak inspection hatches, with freshwater tap for deck washing (2)
- Fiberglass hatches to cover winches and stern cleats (2)
- Fiberglass hull with Ice White colour finish
- Fiberglass swimming stern platform with anti-slip surface in Ice White colour finish-Fire-fighting intake for seawater at bow with hose
- Freshwater intake in chromed brass
- Fuel intakes in chromed brass, one per side (2)
- Garage lights (2)
- GPS antenna
- Horn
- Hull antifouling coating
- Perimeter stainless steel rub rail
- Retractable cleats on the stern platform for tender mooring (2)
- Running lights and anchor lights
- Stainless steel anchor 30Kg with o 10mm 75m galvanized steel chain

- Stainless steel bow defence
- Stainless steel bow protection
- Stainless steel cleats: (4) at stern, (2) at midship and (2) at bow
- Stainless steel deck accessories
- Stainless steel fairleads at bow and stern
- Stainless steel signal mast
- Stern compartment with hatch housing freshwater tap for deck wash, and freshwater -shore connection
- Stern compartment with hatch housing shore electric supply, shower unit and mixer tap
- Stern garage below sunpad for "Avon for Riva" tender housing
- TV antenna built into the deck
- VHF antenna

## Windows/ Hatches

---

- Access hatch to the crew cabin from the side walkway, with stainless steel ladder and teak steps
- Emergency exit hatch from bow cabin to the deck
- Engine room access hatchway from the cockpit
- Fiberglass sliding access door to below deck areas with lock
- Interior doors in wood with stainless steel handle and threshold
- Windshield in stainless steel and tempered glass
- Windshield sun cover and cockpit side windows
- Wipers with built-in washers and timer (2)

## Cockpit

---

- Concealed electro-hydraulic sunshade awning, with transparent canvasses applicable to awning, (1) frontal, (2) lateral
- Covers starboard side sofa and port side sofa
- Fiberglass flooring covered with teak
- Fiberglass wet bar equipped with wash basin and 39 lt, 24V fridge
- Helm seat cover
- Port side sofa cover
- Port sofa with upholstered cushions, with housing for life rafts
- Rounded sofa at stern with upholstered cushions
- Spotlights
- Stainless steel handrail and glossy painted teak on sofa backrest at stern
- Stainless steel table with coated teak folding top
- Starboard side sofa cover
- Starboard sliding sofa with manual blocking system, upholstered cushions and storage under seating

- Stern gates in stainless steel and plexiglass with manual blocking system
- Stern sofa cover
- Stern sunpad with upholstered cushions and plexiglass glass holders
- Top table cover
- Watertight loudspeakers connected to the stereo in the lounge (2)

## Engine Room

---

- Dynamic air inlets (2)
- Electric outlet 230 V
- Engine cooling water filters (2)
- Engine gas outlets with mufflers and silencers
- Engine room temperature alarm sensor
- Fiberglass fuel tank holding 3200 liters with visual level
- Floor in anti-slip material
- Freshwater tap for topping up and cleaning
- Fuel-water separator filters for engine and alarm
- Lighting
- Stainless steel ladder with teak steps to access the cockpit
- Water-on-board alarm sensor

## Master Stateroom and Head

---

- Bed border upholstered in sole leather
- Bulkheads and furniture in wood
- Carpeted flooring with padding underneath
- Cushions 40 X 40 cm (2)
- Double bed with mattress, pillows, bedspread and pillow covers
- Drawer under the bed
- Electric outlets 230V
- Fire extinguisher
- Folding vanity table with spot lights and 230V outlets
- Headboard upholstered with sole leather
- Ice White color porthole and hull window housing with aluminium Venetian blinds
- Ice White varnished bed base, steps and front drawers
- LED TV 19"
- Lockers with courtesy lights (2)
- Mini Hi-fi CD/DVD
- Reading light (2)
- Safe
- Sheets and pillow cases set
- Spotlights

- Upholstered ceiling with lacquering and wooden inserts
- Wall mirrors
- Wooden nightstands (2)

### **Master Head:**

- Bathroom accessories (towel rail, soap holder, (2) bathrobe hangers, toilet paper holder, toilet brush holder and glass for toothbrushes)
- Black water tank level indicator integrated in the toilet control panel
- Bulkheads in wood, laminate and lacquer
- Corian sink with mixer
- Electric ceramic toilet and bidet
- Electric extractor
- Electric outlet 230 V
- Fiberglass flooring
- Glossy lacquered ceiling
- Mirror
- Porthole housing with Venetian blinds
- Shower cubicle with plexiglass door and aluminium profiles with round teak shower base
- Spotlights
- Washbasin top in Corian
- Wooden unit under wash basin
- Wooden wardrobes

## **VIP Stateroom and Head**

---

- Bed border upholstered in sole leather
- Bulkheads and furniture in wood
- Carpeted flooring with padding underneath
- Cushions 40 X 40 cm (2)
- Double bed with mattress, pillows, bedspread and pillow covers
- Drawer under the bed
- Electric outlets 230 V
- Fire extinguisher
- Headboard upholstered with sole leather
- Mini Hi-fi CD
- Mirror
- Open compartments with wooden shelves and glossy stainless steel anti-rolling rail
- Porthole housing with Venetian blinds
- Reading light (2)
- Spotlights
- Upholstered ceiling with lacquering and wooden inserts
- Varnished bed base and steps

- Wardrobe with courtesy lights
- Wooden nightstands with anti-rolling border

### VIP Head:

- Bathroom accessories (towel rail, soap holder, (2) bathrobe hangers, toilet paper holder, toilet brush holder and glass for toothbrushes)
- Black water tank level indicator integrated in the toilet control panel
- Bulkheads in wood and lacquer
- Corian sink with mixer
- Electric ceramic toilet/bidet
- Electric extractor
- Electric outlet 230 V
- Fiberglass Ice White color flooring
- Glossy lacquered ceiling
- Mirror
- Porthole housing with Venetian blinds
- Shower cubicle with plexiglass sliding door
- Spotlights
- Washbasin top in Corian
- Wooden cabinets
- Wooden unit under wash basin

## Guest Stateroom and Day Head

- Bed border upholstered in leather
- Bulkheads and furniture in wood
- Carpeted flooring with padding underneath
- Cushions 40 X 40 cm (2)
- Drawer under the bed
- Electric outlet 230 V
- Fire extinguisher
- Headboard upholstered with sole leather
- Mini Hi-fi CD
- Mirror
- Porthole housing with Venetian blinds
- Reading lights (2)
- Single beds with mattresses pillows, bedspreads and pillow covers (2)
- Spotlights
- Upholstered ceiling with lacquering and wooden inserts
- Varnished bed base steps
- Wardrobe with courtesy lights
- Wooden nightstands

## Day Head:

- Access from the lounge
- Bathroom accessories (towel rail, soap holder, (2) bathrobe hangers, toilet paper holder, toilet brush holder and glass for toothbrushes)
- Black water tank level indicator integrated in the toilet control panel
- Bulkheads in wood, laminate and lacquer
- Corian sink with mixer
- Electric ceramic toilet/bidet
- Electric extractor
- Electric outlet 230 V
- Fiberglass Ice White colour flooring
- Glossy lacquered ceiling
- Mirror
- Porthole housing with Venetian blinds
- Shower cubicle with plexiglass sliding door
- Spotlights
- Washbasin top in Corian
- Wooden cabinets and shelves
- Wooden unit under wash basin

## Crew Cabin

- Bathroom accessories (towel rail, soap dispenser, (2) bathrobe hangers, toilet paper holder, toilet brush holder and glass for toothbrushes)
- Bed with mattress, pillow, bedspread and pillow cover
- Black water tank level indicator integrated in the toilet control panel
- Cabinet
- Electric extractor
- Electric outlet 230 V
- Electric toilet in ceramic with bidet function
- Fiberglass ceiling
- Fiberglass color bulkheads
- Fiberglass Ice White colour flooring
- Fire extinguisher
- Mini Hi-fi CD
- Reading light
- Shower with curtain
- Spotlights
- Stainless steel stair and wooden steps
- Wash basin with mixer tap

---

## Исключения

---

При продаже яхты исключаются личные вещи владельца.

---

## Отказ от ответственности

---

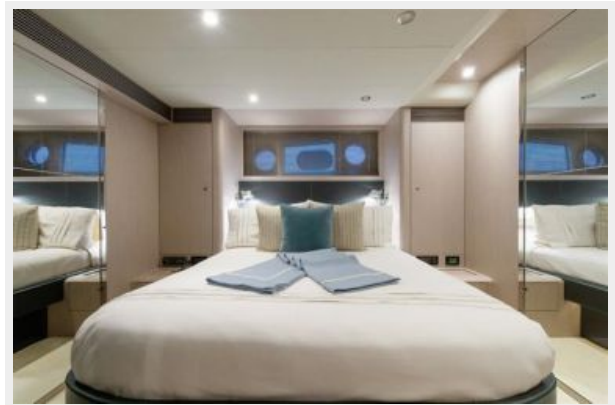
Компания предоставляет описание судна или яхты добросовестно, но не может гарантировать точность этой информации, а также не ручается за техническое состояние. Покупатель должен проинструктировать своих агентов или оценщиков исследовать представленную информацию более подробно, по собственному желанию. Продажа судна или яхты, изменение цены или снятие с продажи будет происходить без предварительного уведомления.



# ФОТОГРАФИИ











# КОНТАКТЫ

---

Андрей Шестаков (Andrey Shestakov) – ведущий яхтенный брокер отдела продаж яхт и судов компании Shestakov Yacht Sales Inc. Официальный представитель Shestakov Yacht Sales Inc. для русскоговорящих клиентов в центральном офисе компании в Майами/Форт Лодердейл/Флорида/США.

## Контактная информация

---

Email: [andrey@shestakovyachtsales.com](mailto:andrey@shestakovyachtsales.com)

Web: [shestakovyachtsales.com](http://shestakovyachtsales.com)

## Телефоны

---

Краснодарский край: **+7(918)465-66-44**

США, Майами, Флорида: **+1(954)274-4435**

## Время работы

---

Понедельник – Суббота: **9:00 - 21:00**  
EDT

Воскресенье: **Закрето**

## Адрес

---



Harbour Towne Marina, 850 NE 3rd St,  
STE 213, Dania, FL 33004