

RENAISSANCE — GERMAN FRERS



Builder: GERMAN FRERS

LOA: 73' 0" (22.25m)

Year Built: 1987

Max Draft: 9' 5" (2.87m)

Model: Cruising Sailboat

Price: PRICE ON APPLICATION

Location: Colombia

Our experienced yacht broker, Andrey Shestakov, will help you choose and buy a yacht that best suits your needs **Renaissance — GERMAN FRERS** from our catalogue. Presently, at Shestakov Yacht Sales Inc., we have a wide variety of yachts available on our sale's list. We also work in close contact with all the big yacht manufacturers from all over the world.

If you would like to buy a yacht **Renaissance — GERMAN FRERS** or would like help answering any questions concerning purchasing, selling or chartering a yacht, please call **+1(954)274-4435**

TABLE OF CONTENTS

TABLE OF CONTENTS	2
SPECIFICATIONS	3
Basic Information	3
Dimensions	3
Speed, Capacities and Weight	3
Accommodations	3
Hull and Deck Information	3
Engine Information	4
DETAILED INFORMATION	5
Layout	5
UPGRADES COMPLETED IN 2012-2014	5
Construction	7
RIG & SAIL INVENTORY	7
Electrical	8
ELECTRICAL & NAVIGATIONAL EQUIPMENT	9
MECHANICAL SPECIFICATIONS	9
Tanks	9
Additional	10
Exclusions	11
Disclaimer	11
PHOTOS	12
CONTACTS	29
Contact details	29
Telephones	29
Office hours	29
Address	29

SPECIFICATIONS

Basic Information

Category: Cruising Sailboat

Sub Category: Cruising/Racing Sailboat

Model Year: 1987

Year Built: 1987

Country: Colombia

Dimensions

LOA: 73' 0" (22.25m)

LWL: 18' 0" (5.49m)

Max Draft: 9' 5" (2.87m)

MFG Length: 73' 0" (22.25m)

Speed, Capacities and Weight

Displacement: 88856 Pounds

Water Capacity: 1000 Gallons

Holding Tank: 75 Gallons

Fuel Capacity: 4104 Gallons

Accommodations

Total Cabins: 3

Total Berths: 10

Total Heads: 4

Hull and Deck Information

Hull Material: Aluminum

Engine Information

Engines: 1

Manufacturer: Volvo

Model: TAMD41

Engine Type: Inboard

Fuel Type: Diesel

DETAILED INFORMATION

Layout

- DECK LAYOUT:

- 'Renaissance' is laid out with a **Mid-ship Cockpit** for guests with seating for 6-8, and can easily be accommodated to have dinner (no table, currently). Nice teak benches that have been oiled, and the backrests are varnished teak. A new bimini enclosure and a cockpit keeps your guests out of the elements.
- The **Aft Cockpit** is for controlling the boat. Twin helms, a second set of buttons to control the winches on the deck, dodger and bimini make the boat comfortable to sail.
- The **Foredeck** has the hard-bottom Zodiac dinghy, and the spinnaker pole.

- BELOWDECK ACCOMODATIONS:

- **Cabins:** As currently laid out, "Renaissance" has **3 cabins each with 2 twin beds each**. There is one quarter berth in the salon, and couch space for two more.
- All the way forward is the **crew cabin, chain locker and storage**. There is a crew head/shower on the starboard side and over and under bunks to port. Crew bunks are currently being used for storage and sail and line locker. This area opens aft into the galley on the port side.
- On starboard is the **forward guest cabin with a private head/shower**. There are over and under bunks. There is access to the salon from the guest cabin and the galley.
- The **salon has a large dinette table** with seating to port and a straight settee and storage and a quarter-berth to starboard.
- Aft of the salon on port is the **aft guest cabin** with over and under bunks. There is a head with stall shower with access from the aft guest cabin and the salon so it can be used as a day head.
- Aft of the salon on starboard is the **navigation/captains cabin**. This cabin has over and under bunks and navigational equipment, and currently the bunks have been converted to a tool storage.
- Continuing aft down the companionway leads into the **master cabin** with large twin double bunks. There is ample storage and a private head with separate stall shower. A ladder leads up from the salon to the **mid-cockpit area**. This area accesses the decks and the aft cockpit with twin steering stations, engine controls and navigational equipment.

UPGRADES COMPLETED IN 2012-2014

All work completed between 2012 and 2014, except where noted.

- DECK HARDWARE

- Garmin 3010C GPSmap chartplotter added (2011), includes Southwest Caribbean map.
- Raymarine e120 Chartplotter at navigation station, includes Navitec maps for West, East, and Central USA and Canada (2008).
- 6 pax Viking life raft, needs yearly servicing
- Batteries replaced with AGMs: 4 x 6V Starting batteries and 8 x 6V House batteries; new cabling
- Zodiac hard-bottom 10-foot dinghy (Purchased in 2006, very little use until 2013)
- 8HP Yamaha outboard, serviced in 2013, runs well.

- ON DECK

- Rebuilt all winches, incl. new or rebuilt buttons. Winches all have secondary buttons in the aft cockpit for easy control while at the helm.
- 2 biminis added to cover both cockpits; used 1 ¼ inch stainless, reinforced with ¾-inch stainless supports, and Sunbrella above.
- Forward cockpit dodger serviced; all stitching redone
- Tent cover (goes from mast to stern) in Sunbrella.
- Steering wheels both recovered in leather, with new Sunbrella covers
- All halyards and jib sheets in Spectra
- Reseated Staysail stay, with steel backing plate, turning block support at mast base
- Dinghy chaps replaced
- All Harken blocks fully serviced
- Rebuilt hydraulic jack for baby stay
- Rebuilt 2 propane fiberglass lockers, serviced all the hardware, including new cellunoids.

- PAINT & TEAK

- Fully repainted deck; stripped all deck hardware, and repainted with 2-part polyurethane in grey with notes of blue, finally including non-skip in paint.
- Hull: Stripped old blue paint and repainted with navy blue. Also new bottom paint (May 2014)
- Repainted mast up to first spreaders, as well as boom
- Both teak cockpit coamings, foredeck teak rails, teak hatch bases and flag pole have had been stripped to bare teak, painted with 10 coats of epoxy, then added primer and finally polyurethane paint, sealed and good for ten years (est.)
- Teak decks (located between cockpits and on the floor of the aft cockpit have been stripped, acid-washed, with the filler shaved down and all plugs filled, and covered in teak oil.
- Rebuilt midship cockpit removable sole

- INTERIOR UPGRADES

- Engine: replaced heads, rings, injector, fully serviced
- Headliner: Complete new covers, removed each panel, replaced with new plywood when necessary; added coat of epoxy; all panels screwed on instead of old Velcro, with caps.

- Lighting: Over \$2,000 of LED lights throughout boat
- Shower floor pans all recaulked, reseated
- Replaced water pump
- Fresh water tanks: Visual inspection found interior paint coatings beginning to chip. (2008)

Construction

- **HULL / KEEL DESIGN:** Externally ballasted wing keel with skeg rudder
- **HULL MATERIAL:** Welded aluminum plating attached to aluminum frames. The exact thickness of the aluminum plating was not supplied with any ships documentation.
- **STRINGERS:** Aluminum frames positioned approximately 16 to 18 inches on center with longitudinal and transverse aluminum angle irons welded to the frames
- **BULKHEADS:** Transverse plywood bulkheads attached to aluminum framing
- **HULL / DECK JOINT:** Welded aluminum
- **DECKS:** Painted non-skid over welded aluminum with laid teak decking in the mid and aft cockpits
- **DECK FITTINGS:** Teak handrails, cockpit coamings and trim with stainless steel stanchions and pulpits

RIG & SAIL INVENTORY

- RIG:

- Sloop rig, keel stepped with four Sparcraft spreaders.
- Made in Aluminium, repainted in 2012 up to first spreader.
- Antal luff track and cars with two-part main haylyard for easy of hoisting and lowering the mainsail. There is a separate track for a storm trysail.
- Carbon fiber spinnaker pole.

- **STANDING RIGGING:** Navtec Rod rigging. Has brass turnbuckles.

- **CHAINPLATES:** Aluminium welded into the aluminium frames

- HARDWARE/ FITTINGS:

- Harken Hydraulic roller furling headstay, Harken mainsheet and genoa tracks, Navtec hydraulic inner forestay, baby stay, flattener, outhaul, backstay and boom vang
- **Upgrades in 2012-2013:** Reseated Staysail stay, with steel backing plate, turning block support at mast base, Rebuilt hydraulic jack for baby stay, all Harken blocks fully serviced

- WINCHES:

- Located near the mast; Four Bariet #37 self tailing two are hydraulic operate

In the mid cockpit:

- Two hydraulically operated Barient self tailing primary winches, Two hydraulically operated Barient self tailing secondary winches
- Two Barient hydraulically operated Barient #28 self tailing

In the aft cockpit:

- Two Barient # 37 self tailing
- One hydraulically operated Barient #737
- One Barient #23+ self tailing

- **OTHER RELATED EQUIPMENT:** Spinnaker pole, reaching strut and turning blocks located at the mast. Maxwell V4000 windlass.

- SAIL INVENTORY

- 2001 North 3DL Full Batten Main with 3 reef points, good condition. Reworked in 2013, new leech line attached.
- 1997 North Staysail, Spectra, great condition
- North Storm Trysail, great condition
- More Sails in Storage, adding inventory soon.

Electrical

- **SHIP'S SYSTEM VOLTAGE:** 12 Volt DC and 24 Volt DC
- **GENERATOR:** Northern Lights, M834K model, rated 12kw (added in 2000)
- **INVERTER:** Newmar, model 24-2000. Additional 12 volt inverter for entertainment system.
- **WIRING:** Original and aftermarket, copper stranded, mostly well secured, OK
- **BATTERIES:** Batteries replaced with AGMs (2012): 4 x 6V Starting batteries and 8 x 6V House batteries; new cabling
- **LOCATION:** All 6 Volt DC batteries are located underneath the cabin sole. The 12 Volt DC battery is located in the captain's quarters
- **SECURED:** All batteries are boxed and covered in acid proof boxes
- **LIGHTING:** Over \$2,000 of LED lights throughout boat
- **OVERCURRENT PROTECTION / PANEL:** Circuit breakers / In the companionway to the aft cabin
- **MASTER SWITCH:** Vapor proof rotary; the battery switch is located in the electrical compartment near the entrance door to the aft cabin
- **BATTERY CHARGER:** Mastervolt 12 Volt DC 40-Amp charger a Newmar 24 Volt DC 70-Amp charger and high output engine alternator with Smart regulator
- **INVERTER:** Newmar 2000-Watt
- **SHORE SYSTEM VOLTAGE:** 120 Volt AC and 240 Volt AC
- **AMPERAGE:** One 120 Volt AC / 30-Amp and one 240 Volt AC / 50-Amp
- **WIRING:** Original and after market, copper stranded, well secured.

- **OVERCURRENT PROTECTION / PANEL:** Circuit breakers / At the companionway to the aft cabin
- **SHORE INLET:** Marinco twist locks in the cockpit
- **GFCI PROTECTION:** Yes
- **OTHERS:** There is a 24 Volt DC to 12 Volt DC converter, an isolation transformer and a corrosion control meter.

ELECTRICAL & NAVIGATIONAL EQUIPMENT

- **VHF:** Icom IM 120
- **Satellite Tracking:** Thrane & Thrane Inmarsat-C
- **Weather:** Furuno Dfax 208 Satellite Weather trac system
- **Chartplotter:** Raymarine e120 Chartplotter at navigation station, includes Navitec maps for West, East, and Central USA and Canada (2008).
- **Chartplotter/Radar (Deck):** Garmin 3010C GPSmap chartplotter added (2011), includes Southwest Caribbean map

MECHANICAL SPECIFICATIONS

- **COOLING:** Closed freshwater cooling with heat exchanger
- **TRANSMISSION:** Volvo Marine Gear model; HS45A-A RATIO: 2.43:1
- **EXHAUST:** Wet through a FRP water lift muffler with water exhaust separator
- **STEERING:** Dual wheels in the aft cockpit with wire and quadrant on the rudderpost
- **PROPELLERS:** Two blade Max Prop, switching to 3 or 4 blade fixed prop (will keep folding Max Prop as extra).
- **SHAFTS:** 2" stainless steel
- **STRUTS:** Welded aluminum
- **RUDDER:** Aluminum
- **BILGE PUMPS:** 12 Volt DC with both manual and automatic functions and a manually operated bilge pump
- **SHOWER PUMPS:** There are shower sump pumps for each individual shower
- **OIL CHANGE PUMP:** There is an oil change pump systems installed in the engine compartment
- **BLOWERS:** 24 Volt DC in the engine compartment
- **HVAC:** Four Marine Air reverse cycle units
- **BELOW WATER THROUGH HULL FITTINGS:** Aluminum with Delron plungers and Marelon ball valves
- **WATER MAKER:** Sea Recovery, works but needs new filters.
- **OTHER:** Fuel transfer pump, saltwater wash down pump system and line cutting spurs

Tanks

FUEL TANKS:

- **TANK CAPACITIES & LOCATION:**

#1 Stbd Fwd: 90 Gal	#2 Port Fwd: 90 Gal
#3 Port Mid: 55 Gal	#4 Stbd Mid: 65 Gal
#5 Port Aft: 45 Gal	#6 Stbd Aft: 45 Gal
#7 Aux. Stbd Mid: 85 Gal	#8 Day Tank: 18 Gal

TOTAL CAPACITY: 513

- **MATERIAL:** All tanks area welded aluminum
- **FILTERS:** Dual Racor fuel water separators for the main engine, a single Racor fuel water separator for the generator and a Racor fuel water separator on the transfer pump

- WATER TANKS:

- **Upgrades in 2008:** Interior paint coatings found beginning to chip. repainted inside.
- **NUMBER OF WATER TANKS:** Four
- **CAPACITY:** 250 gallons
- **LOCATION:** One tank is underneath the galley, one tank is underneath the forward guest cabin and the remaining two tanks are located underneath the salon floor forward of the fuel tanks.
- **MATERIAL:** Welded aluminum and all are integral with the hull

- HOT WATER HEATER:

- **CAPACITY:** 12 gallons
- **LOCATION:** Behind the port settee
- **POWER:** 240 Volt AC and engine heat exchanger

- GAS TANKS / FUEL:

- **Upgrades in 2012-2013:** Rebuilt 2 propane fiberglass lockers, serviced all the hardware, including new cellunoids.
- **QTY & TYPE:** Four / LPG
- **CAPACITY:** 23 lbs each
- **LOCATION:** The tanks are located in two deck boxes near the mast partner
- **MATERIAL:** Aluminum

Additional

- Zodiac hard-bottom 10-foot dinghy (Purchased in 2006, very little use until 2013)

- 8HP Yamaha outboard, serviced in 2013, runs well.
- 6 pax Viking life raft, needs yearly servicing

Exclusions

Owner's personal belongings.

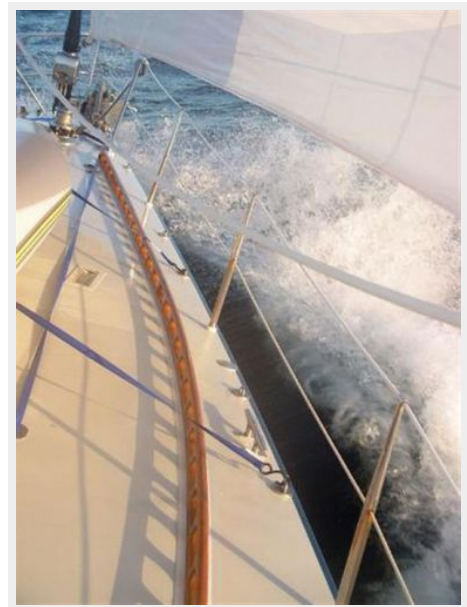
Disclaimer

The Company offers the details of this vessel or yacht in good faith but cannot guarantee or warrant the accuracy of this information nor warrant the condition of the vessel. A buyer should instruct his representatives, agents, or his surveyors, to investigate such details as the buyer desires validated. This vessel or yacht is offered subject to prior sale, price change, or withdrawal without notice.

PHOTOS





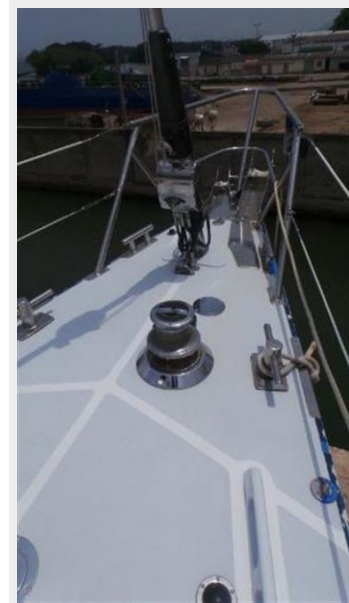


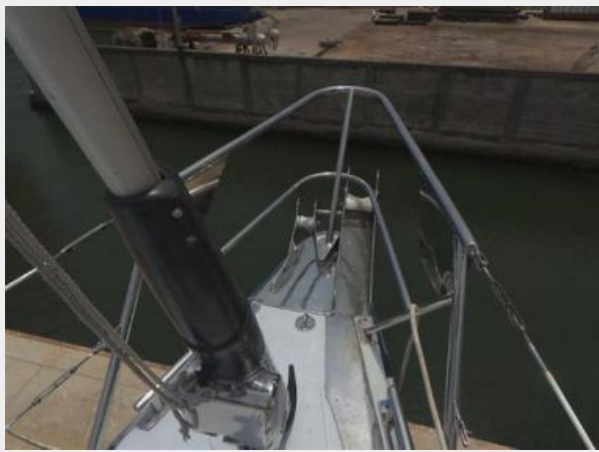


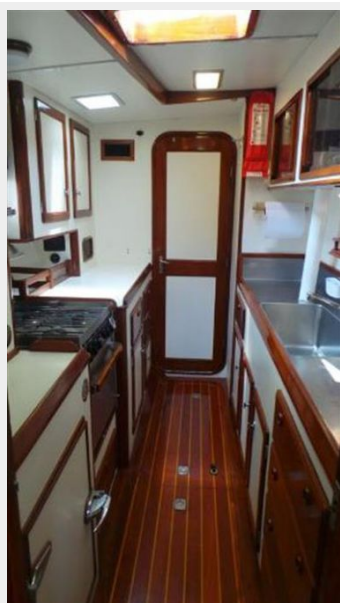
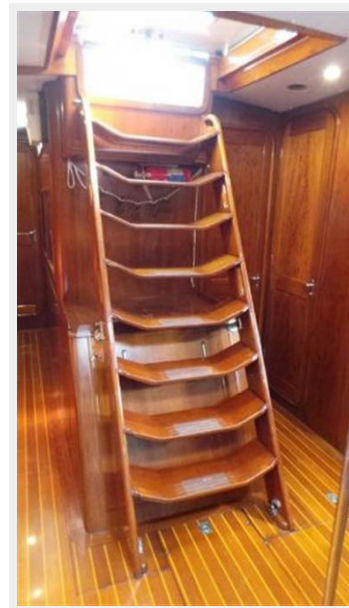


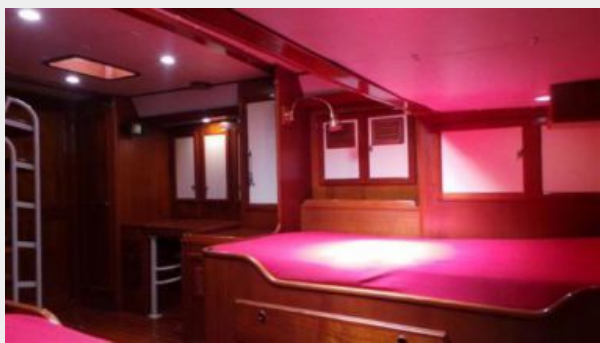
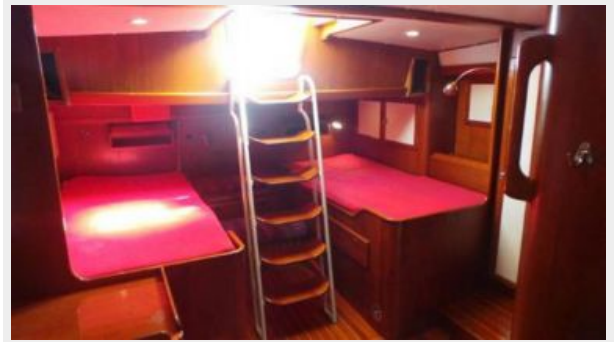




















CONTACTS

Andrey Shestakov, leading yacht broker of the sales department of Shestakov Yacht Sales Inc. Shestakov Yacht Sales Inc., the official representative of the Miami/Fort Lauderdale FL headquarters.

Contact details

Email: andrey@shestakovyachtsales.com

Web: shestakovyachtsales.com/en/

Telephones

USA: +1(954)274-4435

Office hours

Monday – Saturday: **9:00 - 21:00** EDT

Sunday: **closed**

Address



Harbour Towne Marina, 850 NE 3rd St,
STE 213, Dania, FL 33004