

## RENAISSANCE — GERMAN FRERS



**Судостроитель:** [GERMAN FRERS](#)

**Год постройки:** 1987

**Модель:** Крейсерская яхта

**Цена:** ЦЕНА ЯХТЫ ПО ЗАПРОСУ

**Местонахождение:** Colombia

**Длина общая:** 73' 0" (22.25m)

**Макс. осадка:** 9' 5" (2.87m)

Купить Renaissance — GERMAN FRERS а также выбрать подходящую вам яхту из нашего каталога яхт вам поможет опытный яхтенный брокер Андрей Шестаков. На сегодняшний день компания Shestakov Yacht Sales Inc. имеет большое количество яхт в собственном списке продаж, а также тесно сотрудничает со всеми крупными яхтенными производителями по всему миру.

Для того чтобы купить яхту Renaissance — GERMAN FRERS а также проконсультироваться по любому вопросу связанному с покупкой, продажей, чартером яхт позвоните по телефону **+7(918)465-66-44**.

# ОГЛАВЛЕНИЕ

ОГЛАВЛЕНИЕ	2
ХАРАКТЕРИСТИКИ	3
Основная информация	3
Размеры	3
Скорость, вместимость и масса	3
Размещение	3
Корпус и палуба	3
Информация о двигателе	4
ПОДРОБНОЕ ОПИСАНИЕ	5
Layout	5
UPGRADES COMPLETED IN 2012-2014	5
Construction	7
RIG & SAIL INVENTORY	7
Electrical	8
ELECTRICAL & NAVIGATIONAL EQUIPMENT	9
MECHANICAL SPECIFICATIONS	9
Tanks	9
Additional	10
Исключения	11
Отказ от ответственности	11
ФОТОГРАФИИ	12
КОНТАКТЫ	29
Контактная информация	29
Телефоны	29
Время работы	29
Адрес	29

# ХАРАКТЕРИСТИКИ

## Основная информация

Тип судна: Крейсерская яхта

Подкатегория: Cruising/Racing Sailboat

Модельный год: 1987

Год постройки: 1987

Страна: Colombia

## Размеры

Длина общая: 73' 0" (22.25m)

Длина по ватерлинии: 18' 0" (5.49m)

Макс. осадка: 9' 5" (2.87m)

Длина привального бруса: 73' 0"  
(22.25m)

## Скорость, вместимость и масса

Водоизмещение: 88856 Pounds

Вместимость воды: 1000 Gallons

Вместимость сточного бака: 75 Gallons

Объем топливного бака: 4104 Gallons

## Размещение

Всего кают: 3

Всего коек: 10

Всего ком. состава: 4

## Корпус и палуба

Материал корпуса: Aluminum

## Информация о двигателе

---

**Двигатели:** 1

**Производитель:** Volvo

**Модель:** TAMD41

**Тип двигателя:** Inboard

**Тип топлива:** Diesel

---

# ПОДРОБНОЕ ОПИСАНИЕ

---

## Layout

---

### - DECK LAYOUT:

- 'Renaissance' is laid out with a **Mid-ship Cockpit** for guests with seating for 6-8, and can easily be accommodated to have dinner (no table, currently). Nice teak benches that have been oiled, and the backrests are varnished teak. A new bimini enclosure and a cockpit keeps your guests out of the elements.
- The **Aft Cockpit** is for controlling the boat. Twin helms, a second set of buttons to control the winches on the deck, dodger and bimini make the boat comfortable to sail.
- The **Foredeck** has the hard-bottom Zodiac dinghy, and the spinnaker pole.

### - BELOWDECK ACCOMODATIONS:

- **Cabins:** As currently laid out, "Renaissance" has **3 cabins each with 2 twin beds each**. There is one quarter berth in the salon, and couch space for two more.
- All the way forward is the **crew cabin, chain locker and storage**. There is a crew head/shower on the starboard side and over and under bunks to port. Crew bunks are currently being used for storage and sail and line locker. This area opens aft into the galley on the port side.
- On starboard is the **forward guest cabin with a private head/shower**. There are over and under bunks. There is access to the salon from the guest cabin and the galley.
- The **salon has a large dinette table** with seating to port and a straight settee and storage and a quarter-berth to starboard.
- Aft of the salon on port is the **aft guest cabin** with over and under bunks. There is a head with stall shower with access from the aft guest cabin and the salon so it can be used as a day head.
- Aft of the salon on starboard is the **navigation/captains cabin**. This cabin has over and under bunks and navigational equipment, and currently the bunks have been converted to a tool storage.
- Continuing aft down the companionway leads into the **master cabin** with large twin double bunks. There is ample storage and a private head with separate stall shower. A ladder leads up from the salon to the **mid-cockpit area**. This area accesses the decks and the aft cockpit with twin steering stations, engine controls and navigational equipment.

---

## UPGRADES COMPLETED IN 2012-2014

---

*All work completed between 2012 and 2014, except where noted.*

### - DECK HARDWARE

- Garmin 3010C GPSmap chartplotter added (2011), includes Southwest Caribbean map.
- Raymarine e120 Chartplotter at navigation station, includes Navitec maps for West, East, and Central USA and Canada (2008).
- 6 pax Viking life raft, needs yearly servicing
- Batteries replaced with AGMs: 4 x 6V Starting batteries and 8 x 6V House batteries; new cabling
- Zodiac hard-bottom 10-foot dinghy (Purchased in 2006, very little use until 2013)
- 8HP Yamaha outboard, serviced in 2013, runs well.

## - ON DECK

- Rebuilt all winches, incl. new or rebuilt buttons. Winches all have secondary buttons in the aft cockpit for easy control while at the helm.
- 2 biminis added to cover both cockpits; used 1 ¼ inch stainless, reinforced with ¾-inch stainless supports, and Sunbrella above.
- Forward cockpit dodger serviced; all stitching redone
- Tent cover (goes from mast to stern) in Sunbrella.
- Steering wheels both recovered in leather, with new Sunbrella covers
- All halyards and jib sheets in Spectra
- Reseated Staysail stay, with steel backing plate, turning block support at mast base
- Dinghy chaps replaced
- All Harken blocks fully serviced
- Rebuilt hydraulic jack for baby stay
- Rebuilt 2 propane fiberglass lockers, serviced all the hardware, including new cellunoids.

## - PAINT & TEAK

- Fully repainted deck; stripped all deck hardware, and repainted with 2-part polyurethane in grey with notes of blue, finally including non-skip in paint.
- Hull: Stripped old blue paint and repainted with navy blue. Also new bottom paint (May 2014)
- Repainted mast up to first spreaders, as well as boom
- Both teak cockpit coamings, foredeck teak rails, teak hatch bases and flag pole have had been stripped to bare teak, painted with 10 coats of epoxy, then added primer and finally polyurethane paint, sealed and good for ten years (est.)
- Teak decks (located between cockpits and on the floor of the aft cockpit have been stripped, acid-washed, with the filler shaved down and all plugs filled, and covered in teak oil.
- Rebuilt midship cockpit removable sole

## - INTERIOR UPGRADES

- Engine: replaced heads, rings, injector, fully serviced
- Headliner: Complete new covers, removed each panel, replaced with new plywood when necessary; added coat of epoxy; all panels screwed on instead of old Velcro, with caps.

- Lighting: Over \$2,000 of LED lights throughout boat
- Shower floor pans all recaulked, reseated
- Replaced water pump
- Fresh water tanks: Visual inspection found interior paint coatings beginning to chip. (2008)

## Construction

---

- **HULL / KEEL DESIGN:** Externally ballasted wing keel with skeg rudder
- **HULL MATERIAL:** Welded aluminum plating attached to aluminum frames. The exact thickness of the aluminum plating was not supplied with any ships documentation.
- **STRINGERS:** Aluminum frames positioned approximately 16 to 18 inches on center with longitudinal and transverse aluminum angle irons welded to the frames
- **BULKHEADS:** Transverse plywood bulkheads attached to aluminum framing
- **HULL / DECK JOINT:** Welded aluminum
- **DECKS:** Painted non-skid over welded aluminum with laid teak decking in the mid and aft cockpits
- **DECK FITTINGS:** Teak handrails, cockpit coamings and trim with stainless steel stanchions and pulpits

## RIG & SAIL INVENTORY

---

### - RIG:

- Sloop rig, keel stepped with four Sparcraft spreaders.
- Made in Aluminium, repainted in 2012 up to first spreader.
- Antal luff track and cars with two-part main haylyard for easy of hoisting and lowering the mainsail. There is a separate track for a storm trysail.
- Carbon fiber spinnaker pole.

- **STANDING RIGGING:** Navtec Rod rigging. Has brass turnbuckles.

- **CHAINPLATES:** Aluminium welded into the aluminium frames

### - HARDWARE/ FITTINGS:

- Harken Hydraulic roller furling headstay, Harken mainsheet and genoa tracks, Navtec hydraulic inner forestay, baby stay, flattener, outhaul, backstay and boom vang
- **Upgrades in 2012-2013:** Reseated Staysail stay, with steel backing plate, turning block support at mast base, Rebuilt hydraulic jack for baby stay, all Harken blocks fully serviced

### - WINCHES:

- Located near the mast; Four Bariet #37 self tailing two are hydraulic operate

**In the mid cockpit:**

- Two hydraulically operated Barient self tailing primary winches, Two hydraulically operated Barient self tailing secondary winches
- Two Barient hydraulically operated Barient #28 self tailing

**In the aft cockpit:**

- Two Barient # 37 self tailing
- One hydraulically operated Barient #737
- One Barient #23+ self tailing

- **OTHER RELATED EQUIPMENT:** Spinnaker pole, reaching strut and turning blocks located at the mast. Maxwell V4000 windlass.

**- SAIL INVENTORY**

- 2001 North 3DL Full Batten Main with 3 reef points, good condition. Reworked in 2013, new leech line attached.
- 1997 North Staysail, Spectra, great condition
- North Storm Trysail, great condition
- More Sails in Storage, adding inventory soon.

## Electrical

---

- **SHIP'S SYSTEM VOLTAGE:** 12 Volt DC and 24 Volt DC
- **GENERATOR:** Northern Lights, M834K model, rated 12kw (added in 2000)
- **INVERTER:** Newmar, model 24-2000. Additional 12 volt inverter for entertainment system.
- **WIRING:** Original and aftermarket, copper stranded, mostly well secured, OK
- **BATTERIES:** Batteries replaced with AGMs (2012): 4 x 6V Starting batteries and 8 x 6V House batteries; new cabling
- **LOCATION:** All 6 Volt DC batteries are located underneath the cabin sole. The 12 Volt DC battery is located in the captain's quarters
- **SECURED:** All batteries are boxed and covered in acid proof boxes
- **LIGHTING:** Over \$2,000 of LED lights throughout boat
- **OVERCURRENT PROTECTION / PANEL:** Circuit breakers / In the companionway to the aft cabin
- **MASTER SWITCH:** Vapor proof rotary; the battery switch is located in the electrical compartment near the entrance door to the aft cabin
- **BATTERY CHARGER:** Mastervolt 12 Volt DC 40-Amp charger a Newmar 24 Volt DC 70-Amp charger and high output engine alternator with Smart regulator
- **INVERTER:** Newmar 2000-Watt
- **SHORE SYSTEM VOLTAGE:** 120 Volt AC and 240 Volt AC
- **AMPERAGE:** One 120 Volt AC / 30-Amp and one 240 Volt AC / 50-Amp
- **WIRING:** Original and after market, copper stranded, well secured.



- **OVERCURRENT PROTECTION / PANEL:** Circuit breakers / At the companionway to the aft cabin
- **SHORE INLET:** Marinco twist locks in the cockpit
- **GFCI PROTECTION:** Yes
- **OTHERS:** There is a 24 Volt DC to 12 Volt DC converter, an isolation transformer and a corrosion control meter.

---

## ELECTRICAL & NAVIGATIONAL EQUIPMENT

---

- **VHF:** Icom IM 120
- **Satellite Tracking:** Thrane & Thrane Inmarsat-C
- **Weather:** Furuno Dfax 208 Satelite Weather trac system
- **Chartplotter:** Raymarine e120 Chartplotter at navigation station, includes Navitec maps for West, East, and Central USA and Canada (2008).
- **Chartplotter/Radar (Deck):** Garmin 3010C GPSmap chartplotter added (2011), includes Southwest Caribbean map

---

## MECHANICAL SPECIFICATIONS

---

- **COOLING:** Closed freshwater cooling with heat exchanger
- **TRANSMISSION:** Volvo Marine Gear model; HS45A-A RATIO: 2.43:1
- **EXHAUST:** Wet through a FRP water lift muffler with water exhaust separator
- **STEERING:** Dual wheels in the aft cockpit with wire and quadrant on the rudderpost
- **PROPELLERS:** Two blade Max Prop, switching to 3 or 4 blase fixed prop (will keep folding Max Prop as extra).
- **SHAFTS:** 2" stainless steel
- **STRUTS:** Welded aluminum
- **RUDDER:** Aluminum
- **BILGE PUMPS:** 12 Volt DC with both manual and automatic functions and a manually operated bilge pump
- **SHOWER PUMPS:** There are shower sump pumps for each individual shower
- **OIL CHANGE PUMP:** There is an oil change pump systems installed in the engine compartment
- **BLOWERS:** 24 Volt DC in the engine compartment
- **HVAC:** Four Marine Air reverse cycle units
- **BELOW WATER THROUGH HULL FITTINGS:** Aluminum with Delron plungers and Marelon ball valves
- **WATER MAKER:** Sea Recovery, works but needs new filters.
- **OTHER:** Fuel transfer pump, saltwater wash down pump system and line cutting spurs

---

## Tanks

---

## FUEL TANKS:

- **TANK CAPACITIES & LOCATION:**

#1 Stbd Fwd: 90 Gal	#2 Port Fwd: 90 Gal
#3 Port Mid: 55 Gal	#4 Stbd Mid: 65 Gal
#5 Port Aft: 45 Gal	#6 Stbd Aft: 45 Gal
#7 Aux. Stbd Mid: 85 Gal	#8 Day Tank: 18 Gal

**TOTAL CAPACITY: 513**

- **MATERIAL:** All tanks area welded aluminum
- **FILTERS:** Dual Racor fuel water separators for the main engine, a single Racor fuel water separator for the generator and a Racor fuel water separator on the transfer pump

## - WATER TANKS:

- **Upgrades in 2008:** Interior paint coatings found beginning to chip. repainted inside.
- **NUMBER OF WATER TANKS:** Four
- **CAPACITY:** 250 gallons
- **LOCATION:** One tank is underneath the galley, one tank is underneath the forward guest cabin and the remaining two tanks are located underneath the salon floor forward of the fuel tanks.
- **MATERIAL:** Welded aluminum and all are integral with the hull

## - HOT WATER HEATER:

- **CAPACITY:** 12 gallons
- **LOCATION:** Behind the port settee
- **POWER:** 240 Volt AC and engine heat exchanger

## - GAS TANKS / FUEL:

- **Upgrades in 2012-2013:** Rebuilt 2 propane fiberglass lockers, serviced all the hardware, including new cellunoids.
- **QTY & TYPE:** Four / LPG
- **CAPACITY:** 23 lbs each
- **LOCATION:** The tanks are located in two deck boxes near the mast partner
- **MATERIAL:** Aluminum

## Additional

- Zodiac hard-bottom 10-foot dinghy (Purchased in 2006, very little use until 2013)

- 8HP Yamaha outboard, serviced in 2013, runs well.
- 6 pax Viking life raft, needs yearly servicing

## Исключения

---

При продаже яхты исключаются личные вещи владельца.

## Отказ от ответственности

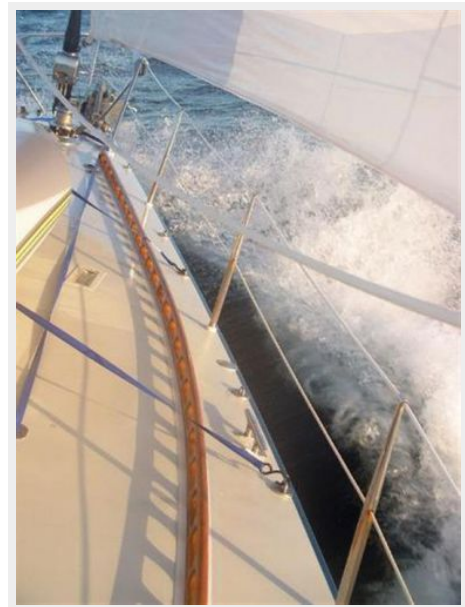
---

Компания предоставляет описание судна или яхты добросовестно, но не может гарантировать точность этой информации, а также не ручается за техническое состояние. Покупатель должен проинструктировать своих агентов или оценщиков исследовать представленную информацию более подробно, по собственному желанию. Продажа судна или яхты, изменение цены или снятие с продажи будет происходить без предварительного уведомления.

# ФОТОГРАФИИ







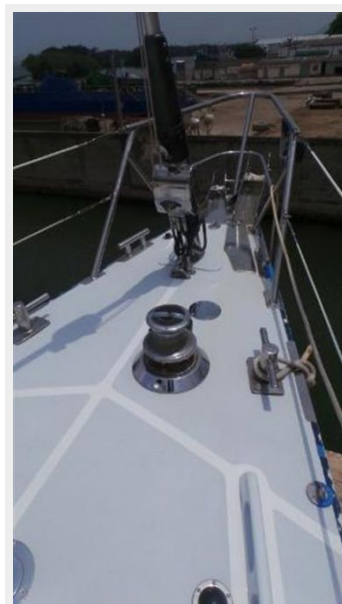


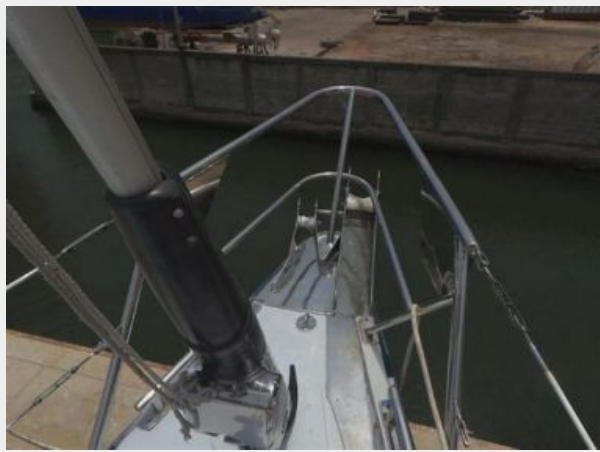


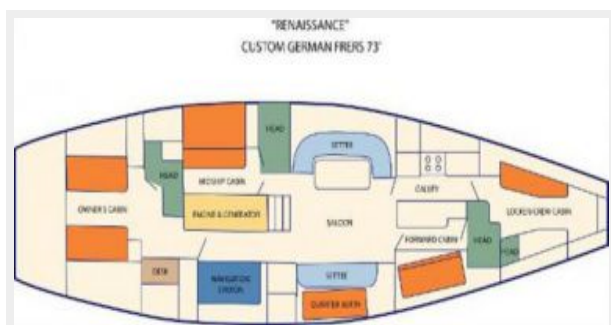


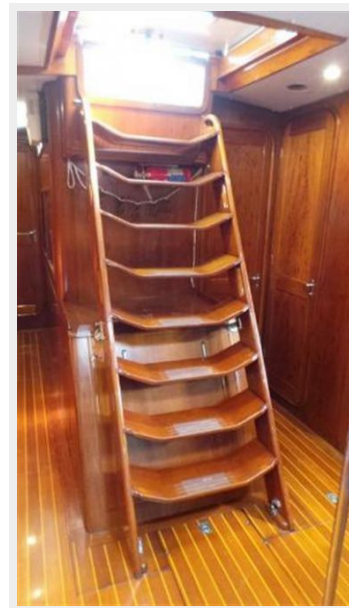


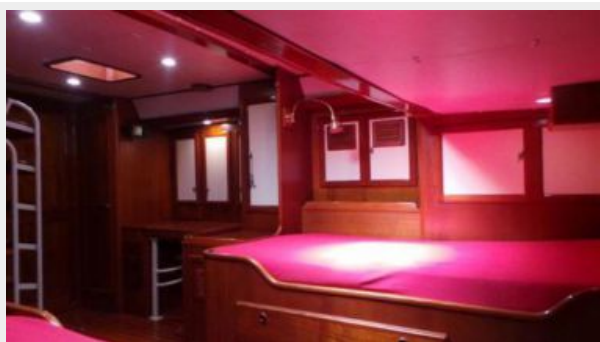


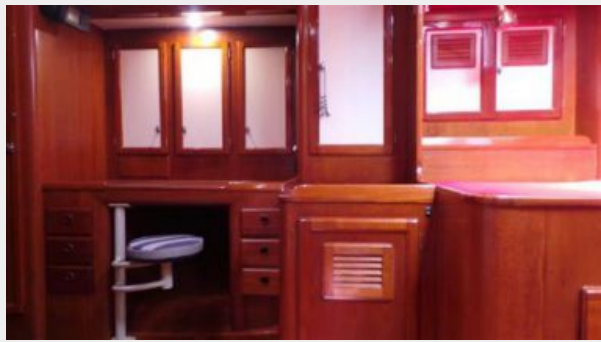






















# КОНТАКТЫ

---

Андрей Шестаков (Andrey Shestakov) – ведущий яхтенный брокер отдела продаж яхт и судов компании Shestakov Yacht Sales Inc. Официальный представитель Shestakov Yacht Sales Inc. для русскоговорящих клиентов в центральном офисе компании в Майами/Форт Лодердейл/Флорида/США.

## Контактная информация

---

Email: [andrey@shestakovyachtsales.com](mailto:andrey@shestakovyachtsales.com)

Web: [shestakovyachtsales.com](http://shestakovyachtsales.com)

## Телефоны

---

Краснодарский край: **+7(918)465-66-44**

США, Майами, Флорида: **+1(954)274-4435**

## Время работы

---

Понедельник – Суббота: **9:00 - 21:00**  
EDT

Воскресенье: **Закрето**

## Адрес

---



Harbour Towne Marina, 850 NE 3rd St,  
STE 213, Dania, FL 33004