

47FT 2011 BENETEAU MONTE CARLO — BENETEAU



Builder: BENETEAU

Year Built: 2011

Model: Motor Yacht

Price: PRICE ON APPLICATION

Location: United States

LOA: 47' 0" (14.33m)

Beam: 14' 0" (4.27m)

Max Draft: 3' 7" (1.09m)

Our experienced yacht broker, Andrey Shestakov, will help you choose and buy a yacht that best suits your needs 47ft 2011 Beneteau MONTE CARLO — BENETEAU from our catalogue. Presently, at Shestakov Yacht Sales Inc., we have a wide variety of yachts available on our sale's list. We also work in close contact with all the big yacht manufacturers from all over the world.

If you would like to buy a yacht 47ft 2011 Beneteau MONTE CARLO — BENETEAU or would like help answering any questions concerning purchasing, selling or chartering a yacht, please call +1(954)274-4435

TABLE OF CONTENTS

TABLE OF CONTENTS	2
SPECIFICATIONS	3
Basic Information	3
Dimensions	3
Speed, Capacities and Weight	3
Accommodations	3
Hull and Deck Information	3
Engine Information	3
DETAILED INFORMATION	4
ADDITIONAL DETAIL	4
Exclusions	6
Disclaimer	6
PHOTOS	7
CONTACTS	14
Contact details	14
Telephones	14
Office hours	14
Address	14

SPECIFICATIONS

Basic Information

Category: Motor Yacht

Model Year: 2011

Year Built: 2011

Country: United States

Dimensions

LOA: 47' 0" (14.33m)

Beam: 14' 0" (4.27m)

Max Draft: 3' 7" (1.09m)

Clearance: 15' 5" (4.70m)

Speed, Capacities and Weight

Displacement: 25573 Pounds

Water Capacity: 168 Gallons

Holding Tank: 37 Gallons

Fuel Capacity: 340 Gallons

Accommodations

Total Cabins: 2

Total Heads: 2

Hull and Deck Information

Hull Material: Fiberglass

Engine Information

Engines: 2

Manufacturer: Volvo Penta

Model: IPS 600

Engine Type: Inboard

Fuel Type: Diesel

DETAILED INFORMATION

ADDITIONAL DETAIL

HELM

- Volvo Penta IPS 600 Joystick Boat Trim System
- Compass - Plastimo Offshore 95, BV 0062 -08
- Laurent Leather Helm Seat (Moka 0203)

NAVIGATION/ELECTRONICS

- VHF - RayMarine 240
- Auto Pilot - RayMarine ST70
- Chartplotter - RayMarine E120 Hybrid Touch, Touch Screen. Chip for entire US
- Radar - RayMarine 4kw

DECK

- ACR Search Light with remote control at Helm
- Lewmar V1-6 Windlass with Quick Remote Control
- Electric Opening Garage under aft deck
- Dinghy launch and retrieval - Electric Winch with Quick Remove Control
- Dinghy - Zodiac 8.5 feet. With Torquedo T1003 electric outboard. 1145-00 29v rechargeable battery. Electric outlet installed in garage for recharging battery
- Aft Deck Refrigeration - Waeco Coolmatic CRP-40 Refrigerator
- Aft Deck Cooking - Kenyon Custom Electric Grill
- Shore Power Cable Storage System - Electric Glendinning CM-7 Cable Master. Extend and retract. Below decks stowage of 75', 50 amp shore power cable.
- Fenders - Six G5, 10x30 white
- Transient Dock Lines - Six 50', triple braided 3/4 lines with spliced loop. Black
- Aft Deck Sun Roof (Retractable)
- Custom hand holds for safer transition from aft deck to side decks and forward

SAFETY

- Personal EPIRB - ACR Cobham ResQLink personal locator beacon
- Engine Room Fire Suppression System
- Liferaft - Revere Elite 6 person, covered, self inflating
- Fire extinguishers throughout
- PFD's - Eight

ELECTRIC

- Inverter - Magnum MS Series 2024 Pure Sine Wave Inverter - Runs all 110 outlets on boat

- Battery Charger - Dolphin
- Generator - Cummins Onan - 9 kw Model: MDKBL-5871F

GALLEY

- Refrigerator/freezer - Full upright AClass
- Stove - EuroKera Force 10 2 Burner Electric
- Microwave - Countoure
- Ice Maker - Cerette Automatic Ice Maker
- Wiring and Connections ready for Washer/Dryer installation. No Washer/Dryer installed.

ENTERTAINMENT

- Samsung LCD's Screens; Aft 31", Forward 21"
- Salon LCD TV Screen, Samsung 37". Electric retract into salon cabinetry.
- Bose sound system in salon
- VDO speakers throughout
- DVD/CD/MP3 - Jensen DV2011 (3) Salon, Aft cabin, forward cabin
- MP3 WMA ACC - Sony Marine - Salon
- Cable hook up

TANKS

- Fuel - 2 tanks - 343.46 gallons total capacity
- Water - 2 tanks - 169 gallons total capacity
- Holding Tank - 1 tank - 37 gallon total capacity

HEADS

- Two heads, one forward, one in aft cabin. Vacuflush 4800 Series. Separate shower stalls.
- Dometic Holding Tank Monitor

OTHER

- Air Conditioning - Four Cruisair STQ units - Salon 16,000 BTU, Aft Cabin 12,000 BTU, Forward Cabin 12,000 BTU, Midship 12,000 BTU. July 2014 all units completely serviced, Midship unit replaced. All lines cleaned out 100%.
- Bow Thruster - Power Max
- Retractable Sun Roof in Main Salon
- Aqualuma - Two underwater aqualuma 12 LED lights, port and starboard
- All manuals for every system on the yacht

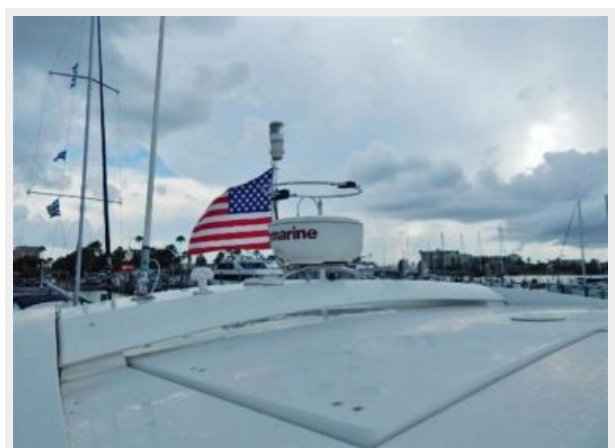
Exclusions

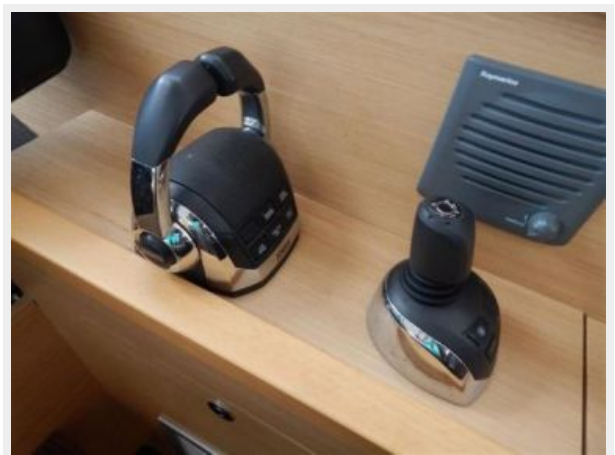
Owner's personal belongings.

Disclaimer

The Company offers the details of this vessel or yacht in good faith but cannot guarantee or warrant the accuracy of this information nor warrant the condition of the vessel. A buyer should instruct his representatives, agents, or his surveyors, to investigate such details as the buyer desires validated. This vessel or yacht is offered subject to prior sale, price change, or withdrawal without notice.

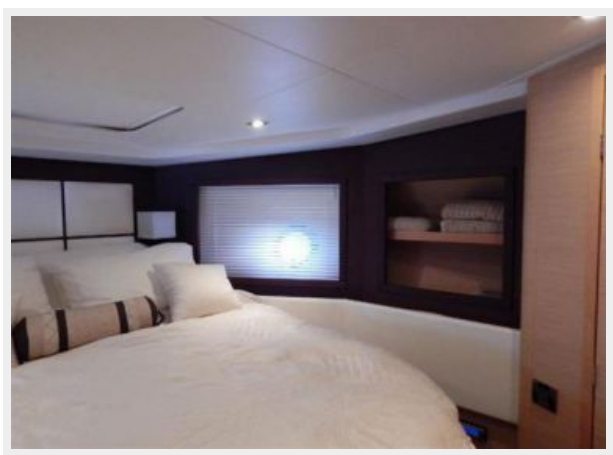
PHOTOS















CONTACTS

Andrey Shestakov, leading yacht broker of the sales department of Shestakov Yacht Sales Inc. Shestakov Yacht Sales Inc., the official representative of the Miami/Fort Lauderdale FL headquarters.

Contact details

Email: andrey@shestakovyachtsales.com

Web: shestakovyachtsales.com/en/

Telephones

USA: +1(954)274-4435

Office hours

Monday – Saturday: **9:00 - 21:00** EDT

Sunday: **closed**

Address



Harbour Towne Marina, 850 NE 3rd St,
STE 213, Dania, FL 33004