

## NO NAME — LOREQUIN



**Builder:** [Lorequin](#)

**Year Built:** 2007

**Model:** Sport Fisherman

**Price:** PRICE ON APPLICATION

**Location:** United States

**LOA:** 35' 0" (10.67m)

**Beam:** 13' 10" (4.22m)

**Min Draft:** 3' 8" (1.12m)

**Cruise Speed:** 10 Kts. (12 MPH)

**Max Speed:** 14 Kts. (16 MPH)

Our experienced yacht broker, Andrey Shestakov, will help you choose and buy a yacht that best suits your needs **No Name — Lorequin** from our catalogue. Presently, at Shestakov Yacht Sales Inc., we have a wide variety of yachts available on our sale's list. We also work in close contact with all the big yacht manufacturers from all over the world.

If you would like to buy a yacht **No Name — Lorequin** or would like help answering any questions concerning purchasing, selling or chartering a yacht, please call **+1(954)274-4435**

---

# TABLE OF CONTENTS

---

TABLE OF CONTENTS	2
SPECIFICATIONS	4
Overview	4
Basic Information	4
Dimensions	4
Speed, Capacities and Weight	4
Accommodations	4
Hull and Deck Information	5
Engine Information	5
DETAILED INFORMATION	6
Accommodations	6
Electrical Equipment	6
Deck Equipment	6
Mechanical	6
Electronics	6
Exclusions	6
Disclaimer	7
PHOTOS	8
Bow view	8
Bow deck	8
Helm looking aft	8
Transom looking forward	8
Starboard gunwale	8
Port gunwale	8
Helm	9
Galley	9
V-Berth forward	9
Galley area	9

---

Cabin view	9
Engine room	9
Engine room	10
Engine room	10
Engine room	10
Engine room	10
Engine room	10
Engine room	10
Aft below deck	10
Starboard cabin	11
Aft below deck	11
Head	11
CONTACTS	12
Contact details	12
Telephones	12
Office hours	12
Address	12

---

# SPECIFICATIONS

---

## Overview

---

2007 35' Lorequin express, single Caterpillar 3208 diesel with low hours SMOH, custom aluminum fram canvas top, cabin with microwave, refrigerator, enclosed head, v-berth for two. This model is well known as a fuel efficient fishing vessel, or as commercial lobster/crab vessel. Come to the heart of the Florida Keys to see this custom built boat. Owner highly motivated to SELL!

## Basic Information

---

**Category:** Sport Fisherman

**Sub Category:** Express

**Model Year:** 2007

**Year Built:** 2007

**Country:** United States

## Dimensions

---

**LOA:** 35' 0" (10.67m)

**Beam:** 13' 10" (4.22m)

**Min Draft:** 3' 8" (1.12m)

## Speed, Capacities and Weight

---

**Cruise Speed:** 10 Kts. (12 MPH)

**Max Speed:** 14 Kts. (16 MPH)

**Displacement:** 15000 Pounds

**Water Capacity:** 30 Gallons

**Fuel Capacity:** 500 Gallons

## Accommodations

---

**Total Cabins:** 1

**Total Berths:** 1

**Sleeps:** 2

**Total Heads:** 1

---

## Hull and Deck Information

---

**Hull Material:** Fiberglass

**Deck Material:** Fiberglass over Wood

**Hull Configuration:** Planing

**Hull Color:** Ice Blue

**Hull Finish:** Plastic

---

## Engine Information

---

**Engines:** 1

**Manufacturer:** Caterpillar

**Model:** 3208

**Engine Type:** Inboard

**Fuel Type:** Diesel

---

# DETAILED INFORMATION

---

## Accommodations

---

Boarding is accomplished by stepping onto the wide gunwale and onto the large beamy aft deck, there are six gunwale rod holders (3 port 3 starboard), six in gunwale rod storage (3 port 3 starboard), seven rod holders mounted on the aft side of the custom built aluminum frame canvas top, two very large deck hatches providing easy access to below aft decks. Moving forward up one deck step there are two deck mounted storage boxes (1 port 1 starboard), large deck hatch providing engine room access, port deck mounted chair, starboard helm station with deck mounted chair, centerline door in forward bulkhead providing access to the cabin down three steps. The galley is located on the port side, Premium refrigerator/freezer, Gaggenav four burner electric stove top, Premium microwave, sink with overhead recessed lighting. On the starboard side is a doorway leading to the head. Forward is the V-berths for two people, two overhead hatches provide sunlight to the cabin.

## Electrical Equipment

---

Shore power inlet port/starboard sides midship 12 volt DC - 120 volt AC (shore power only)  
Constavolt battery charger 30 amp automatic 1 8D battery

## Deck Equipment

---

Anchor with line Raw water wash down Docking lights Navigation lights Search light Spreader lights aft deck Swim platform

## Mechanical

---

Helm station and controls Bilge blower Emergency engine stop Fuel shut off valves Engine fresh water cooled Head Hydraulic steering

## Electronics

---

VHF radio

## Exclusions

---

Owner's personal belongings.

---

## Disclaimer

---

The Company offers the details of this vessel or yacht in good faith but cannot guarantee or warrant the accuracy of this information nor warrant the condition of the vessel. A buyer should instruct his representatives, agents, or his surveyors, to investigate such details as the buyer desires validated. This vessel or yacht is offered subject to prior sale, price change, or withdrawal without notice.

# PHOTOS

**Bow view**



**Bow deck**



**Helm looking aft**



**Transom looking forward**



**Starboard gunwale**



**Port gunwale**





**Helm**



**Galley**



**V-Berth forward**



**Galley area**



**Cabin view**



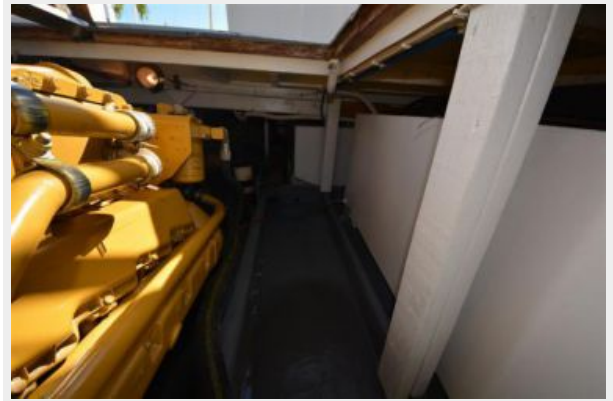
**Engine room**



**Engine room**



**Engine room**



**Engine room**



**Engine room**



**Engine room**



**Aft below deck**



**Aft below deck**



**Starboard cabin**



**Head**



# CONTACTS

---

Andrey Shestakov, leading yacht broker of the sales department of Shestakov Yacht Sales Inc. Shestakov Yacht Sales Inc., the official representative of the Miami/Fort Lauderdale FL headquarters.

## Contact details

---

Email: [andrey@shestakovyachtsales.com](mailto:andrey@shestakovyachtsales.com)

Web: [shestakovyachtsales.com/en/](http://shestakovyachtsales.com/en/)

## Telephones

---

USA: +1(954)274-4435

## Office hours

---

Monday – Saturday: **9:00 - 21:00** EDT

Sunday: **closed**

## Address

---



Harbour Towne Marina, 850 NE 3rd St,  
STE 213, Dania, FL 33004