

## CEE SMITTEN — SEA RAY



**Builder:** [SEA RAY](#)

**LOA:** 42' 0" (12.80m)

**Year Built:** 2005

**Beam:** 14' 3" (4.34m)

**Model:** Cruiser

**Price:** PRICE ON APPLICATION

**Location:** United States

Our experienced yacht broker, Andrey Shestakov, will help you choose and buy a yacht that best suits your needs **Cee Smitten — SEA RAY** from our catalogue. Presently, at Shestakov Yacht Sales Inc., we have a wide variety of yachts available on our sale's list. We also work in close contact with all the big yacht manufacturers from all over the world.

If you would like to buy a yacht **Cee Smitten — SEA RAY** or would like help answering any questions concerning purchasing, selling or chartering a yacht, please call **+1(954)274-4435**

# TABLE OF CONTENTS

---

TABLE OF CONTENTS	2
SPECIFICATIONS	5
Overview	5
Basic Information	5
Dimensions	5
Speed, Capacities and Weight	5
Accommodations	5
Hull and Deck Information	5
Engine Information	6
DETAILED INFORMATION	7
Windalss	7
Canvas	7
hull and Deck Features	7
Bridge Features	8
helm Station	8
Electronics	8
Cabin Features	9
Salon area	9
Dinette Area	9
Master Stateroom	10
Master Head/Shower	10
VIP Stateroom	11
VIP Head/Shower	11
Cockpit Features	11
Water System	12
Underwater Gear	12
Generator	12
Electrical System	12

Exclusions	13
Disclaimer	13
PHOTOS	14
Elcectic panel	14
Port side couch	14
Starboard side couch	14
Salon	14
Headliner	14
Looking down to Galley from salon	14
galley	15
fridge freezer	15
convection over	15
Galley wood flooring	15
Electric burner	15
Galley storage	15
Salon Dinette w swivel table	16
Forward large windows	16
Salon View	16
Port side 2nd stateroom	16
Cedar Closet	16
2nd Stateroom	16
2nd Head	17
2nd Stateroom shower	17
Cedar Closet Master	17
Master Bed	17
Master Head	17
Head	17
Sink in Master	18
Nice large Master head and shower	18

Master shower	18
Hallway	18
Hallway	18
Washer/Dryer located under steps to Galley	18
Cockpit	19
Sliding doors to Salon	19
Cockpit Fridge	19
Molded steps to Bridge	19
Enclosure and Steps to Starboard side	19
Bridge Dinette Seating	19
Bridge Storage Box	20
Heml Cover	20
Dual Bridge chairs	20
Elcetronics	20
C-120 Color Plotter	20
Bridge door enclosure	20
Engine access	21
engine room	21
Generator	21
Engine hatch	22
Bow	22
Windlass	22
Another shot of Sliders	23
Another photo of Enclosure	23
<b>CONTACTS</b>	<b>25</b>
Contact details	25
Telephones	25
Office hours	25
Address	25

---

# SPECIFICATIONS

---

## Overview

---

This extremely popular sedan bridge is nicely equipped with full electronics including bow thruster. She has two staterooms, two heads and showers and can sleep 6. This boat has also been upgraded with Cummins 480CE Twin 446hp as opposed to the standard Cummins 6CTA 430hp. New Garmin 7212 Touch Screen as of Nov 2014

## Basic Information

---

**Category:** Cruiser

**Sub Category:** Sedan Cruiser

**Model Year:** 2005

**Year Built:** 2005

**Country:** United States

**Vessel Top:** Hardtop

## Dimensions

---

**LOA:** 42' 0" (12.80m)

**Beam:** 14' 3" (4.34m)

## Speed, Capacities and Weight

---

**Displacement:** 28500 Pounds

**Water Capacity:** 120 Gallons

**Holding Tank:** 42 Gallons

**Fuel Capacity:** 350 Gallons

## Accommodations

---

**Total Cabins:** 2

**Total Heads:** 2

## Hull and Deck Information

---

**Hull Material:** Fiberglass

**Hull Color:** Pewter

**Hull Designer:** Sea Ray

---

## Engine Information

---

**Engines:** 2

**Manufacturer:** Cummins

**Model:** 480CE

**Engine Type:** Inboard

**Fuel Type:** Diesel

---

# DETAILED INFORMATION

---

## Windalss

---

- Anchor Rope/Chain Storage w/Hatches
- Anchor Wash down Spigot
- Windlass, Rope/Chain w/Foot Switches (LofransProject 1,000 Low Profile)

## Canvas

---

- Aft Curtain
- Bridge Enclosure
- Soft Top w/Full Enclosure
- Windshield Cover
- Windshield Shades

## hull and Deck Features

---

- Bottom Paint
- Bow Rail, 316 Stainless Steel w/Welded Stanchions,
- Intermediate Rails & Life Lines
- Canvas Colors (Navy, Green, Tan, Black)
- Cleats, Custom Sea Ray Thru-Bolted - Stainless Steel (8)
- Deck Fill Plates, Stainless Steel
- Deck Rails, 316 Stainless Steel
- Gel Coat, Arctic White
- Graphics, Striping
- Handrails, 316 Stainless Steel
- Hatch, Deck Vent - Translucent w/Locks & Sky
- Screen Cover (20x20)
- Lights, Navigation
- Resin, High-Performance Vinylester
- Rub Rail, PVC w/Stainless Steel Insert
- Storage, Transom Wall - (For Fenders & Gear)
- Stringer System, Fiberglass Hatman
- Swim Platform, Integral w/Concealed Stainless Steel
- Three-Step Swim Ladder w/Integral Grab Handle
- Thru-Hull Fittings, Stainless Steel
- Toe Rail, Molded Fiberglass - Deck
- Vent System, Engine Room - Integral
- Windshield, Bridge Venturi - Aluminum-Framed

- Windshield, Recessed Tempered/Tinted Curved

---

## Bridge Features

---

- Beverage Holders (4)
- Carpet Liner, Snap-In
- Control Station (Located Center/Forward)
- Handrails, 316 Stainless Steel
- Lighting, Indirect
- Outlet, 12V Accessory
- Seating, Helm (2) - Custom Euro-Style w/Flip-Up Thigh-
- Rise Bolsters, Armrests & Heavy-Duty Pedestals
- w/Slides, Swivels & Pneumatic Vertical Adjustments
- Seating, U-Shaped - Aft
- Ship's Bell
- Sport Spoiler, Molded Fiberglass (Seamless)
- w/Overhead Lighting
- Steps, Molded Bridge Access w/Stainless Steel Handrail
- Storage, Cabinet - Fiberglass
- Table, Bridge

---

## helm Station

---

- Alarms, High-Water - Bilge
- Compass
- Emergency Start System - Engines
- Horn, Air (Concealed) - Dual Trumpet
- Instrument Panel, High-Gloss Burl
- Instrumentation,
- Custom Sea Ray Backlit w/Low-Glare Blue Night Lighting & Stainless Steel Bezels
- [Includes: Engine Sync, Fuel (2), Oil Pressure (2),
- Tachometers w/LCD Hour meters (2), Voltmeters (2),
- Water Temperature (2)]
- Steering, Hydraulic
- Steering Wheel, Wood-Accent
- Switch Panel - High-Gloss Burl
- Switches, Illuminated Weatherproof Rockers &
- Electronic Dimmer Control
- Systems Monitor, Digital LCD - for Engine Diagnostics& Pump Monitoring

---

## Electronics

---



- Garmin 7212 Touch Screen plotter/radar
- Bow Thruster
- Auto pilot
- VHF
- C-120 Plotter (Raymarine)

---

## Cabin Features

---

- Blinds, Wood
- Carbon Monoxide Monitors
- Carpet, Deep-Pile BCF - 44-Ounce
- Carpet Runners, Interior (Sunbrella)
- Handrails, Elliptical Stainless Steel
- Interior Finish - Blossom Cherry
- Lighting, 12V Halogen
- Lighting, 12V Indirect
- Outlet, 12V Accessory
- Outlets, 120V GFI Protected
- Outlets, Phone
- Outlets & Switch Plates - Satin Nickel Finish
- Pillows, Accent
- Shades, Fabric Day/Night w/Drape Trim
- Storage, In-Floor
- Wood Trim

---

## Salon area

---

- Entertainment Center
- Stereo, 12V AM/FM Single CD, Satellite-Ready
- w/6-Disc CD Changer, Amplifier, Subwoofer,
- Speakers (8), Digital Cockpit Remote Control &
- Speaker Selector Switches (Clarion- Storage Cabinet - CD
- TV, 20" Flatscreen LCD (120V) w/Remote DVD
- Player, Coax Outlet & Gain Control Panel
- Seating, Loveseat - Starboard (Ultraleather HP™)
- Seating, Sofa - Port (Ultraleather)
- Storage, Cabinets - Port & Starboard
- Washer/Dryer Combo under steps

---

## Dinette Area

---

- Breakfast Bar, Solid Surface Coffeemaker
- Countertop, Solid Surface
- Grohe Faucet Single Lever
- Wood Flooring
- Handrail, Stainless Steel
- Lighting, Dual-Voltage 1 120V/12V
- Microwave/Convection Oven, 120V
- Power Vent, 12V
- Refrigerator/Freezer - Dual-Voltage - 120V/12V
- Storage, Drawers w/Cutlery Insert
- Storage, Galley Pantry
- Storage, In-Floor
- Storage, Under Steps
- Storage, Upper & Lower w/Designated Glass &
- Bottle Storage
- Stove, 120V Recessed Two-Burner
- Trash Receptacle

---

## Master Stateroom

---

- Bed, Full-Size w/Innerspring Mattress, Pillows, Sheets,
- Coordinated Spread & Drawer Storage Below
- Door, Privacy w/Full-Length Mirror
- Hanging Lockers (2), Cedar-Lined w/Lights
- Mirrored Rope Locker Bulkhead
- Storage, Gunwale Cabinets
- Storage, In-Floor
- Storage, Side Shelves
- TV/DVD Combo, 13" - 120V w/Remote & Coax Outlet

---

## Master Head/Shower

---

- Bath Accessories, Chrome
- Clothes Hook
- Door, Privacy - Access from Forward Stateroom
- Handrails, Elliptical Stainless Steel
- Head, Large (VacuFlush)
- Power Vent, 12V
- Shower w/Seat, Adjustable Grohe Shower Wand &
- Acrylic Door
- Skylight, Circular
- Storage, Medicine Cabinet - Mirrored

- Vanity w/Solid Surface Countertop, Sink, Grohe sink & faucet
- storage below

---

## VIP Stateroom

---

- Beds, Twin (2) - w/Mattresses, Pillows, Sheets Coordinated Spread w/Filler Cushions to Convert into King-Size Bed w/Storage Below
- Door, Privacy w/Full-Length Mirror
- Hanging Locker, Cedar-Lined w/Light
- Mirror, Wall Accent
- Nightstand, Built-In w/Countertop
- Portlight - Stainless Steel
- Skylight

---

## VIP Head/Shower

---

- Bath Accessories, Chrome
- Door, Privacy - Access from Salon
- Handrail, Elliptical Stainless Steel
- Head, Large (VacuFlush)
- Power Vent, 12V
- Shower w/Seat, Adjustable Grohe Shower Wand & Acrylic Door
- Skylight, Circular
- Storage, Cabinet - Shower
- Storage, Medicine Cabinet - Mirrored
- Vanity w/Solid Surface Countertop, Sink, Grohe
- Faucet & Storage Below

---

## Cockpit Features

---

- Carpet Liner, Snap-In
- Door, Cabin Entry (Sliding & Lockable) w/Screen
- Door, Transom
- Floor Liner, Fiberglass - Self-Bailing
- Hatch, Engine Service - Gas-Assisted
- Lighting, Indirect
- Outlet, 120V GFI Protected
- Steps, Molded Deck Access
- Storage, Side Panel
- Cockpit Fridge

---

## Water System

---

- Freshwater Hose & Spigot - Engine Room
- Freshwater Wash down Spigot - Cockpit
- Freshwater Wash down Spigot - Transom
- Manifold System w/Shutoff Valves
- Pressure Water System w/12V Pump
- Shower, Cockpit - Hot & Cold
- Water Heater, 120V (11-Gallon)
- Water Inlet, Dockside

---

## Underwater Gear

---

- Bonding System w/Zinc Hull Plate
- Propeller Shafts, 2" Stainless Steel (2) - Aquamet 19 Propellers, Nibral 4-Blade Cup
- Rudders, Manganese-Bronze w/Stainless Steel Posts
- Seacocks on all Underwater Fittings
- Seawater Strainers
- Shaft Logs, Dripless w/Extra Seal Carrier Kit
- Struts, Manganese-Bronze
- Trim Tabs, Hydraulic

---

## Generator

---

- Onan Remote Start w/Muffler, & Stainless Steel Exhaust
- Outlet, Freshwater Cooling, Fuel Filter, Seacock &
- Seawater Strainer

---

## Electrical System

---

- Batteries (4) w/Trays
- Battery Charger/Converter, 120V/50 Amp/12V
- Enclosure, Weatherproof Main Solenoid Disconnect w/Composite Enclosure
- Panel, Circuit Breaker - Remote
- Panel, DC Main Breaker - Housed in Aluminum
- Enclosure w/Weatherproof Connector
- Panel, Main Distribution - AC - Housed in Aluminum Enclosure
- Panel, Main Distribution - DC - Housed in Aluminum
- Enclosure w/Weatherproof Connector
- Shore Power, Dual 30 Amp/120V/60 Cycle w/50'
- Cords & Adapters

- 
- Transformers, Shore Power Isolation (2) - 30
  - Amp/120V/60 Cycle
  - TV/Phone Inlet w/TV Antenna, TV Shore Cord & Phone Shore Cord
  - Wiring, Color-Coded w/Chafe Protection

## Exclusions

---

Owner's personal belongings.

## Disclaimer

---

The Company offers the details of this vessel or yacht in good faith but cannot guarantee or warrant the accuracy of this information nor warrant the condition of the vessel. A buyer should instruct his representatives, agents, or his surveyors, to investigate such details as the buyer desires validated. This vessel or yacht is offered subject to prior sale, price change, or withdrawal without notice.

# PHOTOS

**Elcectic panel**



**Port side couch**



**Starboard side couch**



**Salon**



**Headliner**



**Looking down to Galley from salon**



**galley**



**fridge freezer**



**convection over**



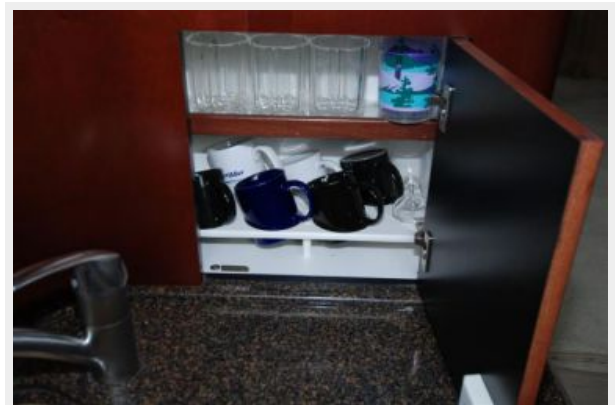
**Galley wood flooring**



**Electric burner**



**Galley storage**





**Salon Dinette w swivel table**



**Forward large windows**



**Salon View**



**Port side 2nd stateroom**



**Cedar Closet**



**2nd Stateroom**





**2nd Head**



**2nd Stateroom shower**



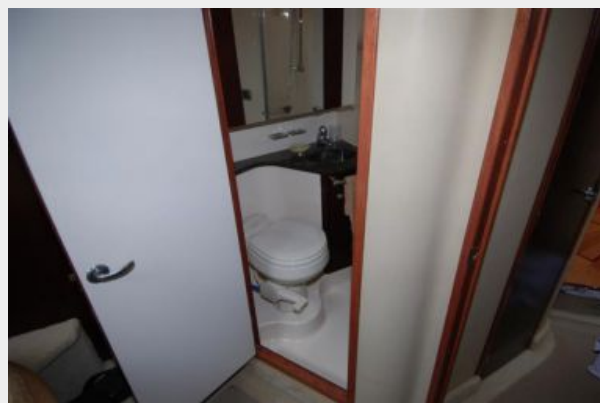
**Cedar Closet Master**



**Master Bed**



**Master Head**



**Head**



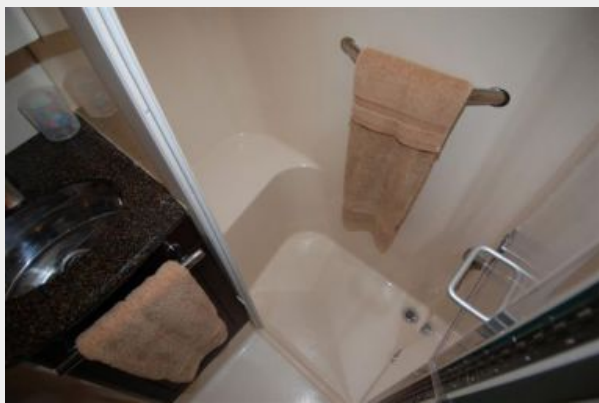
**Sink in Master**



**Nice large Master head and shower**



**Master shower**



**Hallway**



**Hallway**



**Washer/Dryer located under steps to Galley**



**Cockpit**



**Sliding doors to Salon**



**Cockpit Fridge**



**Molded steps to Bridge**



**Enclosure and Steps to Starboard side**



**Bridge Dinette Seating**





**Bridge Storage Box**



**Heml Cover**



**Dual Bridge chairs**



**Elcetronics**



**C-120 Color Plotter**



**Bridge door enclosure**



### Engine access



### engine room

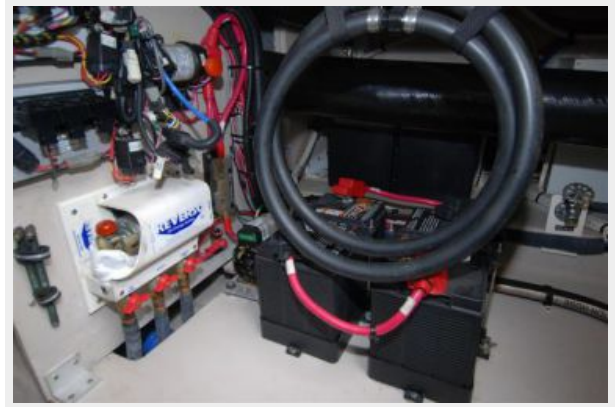


### Generator





**Engine hatch**



**Bow**



**Windlass**







Another shot of Sliders



Another photo of Enclosure







---

# CONTACTS

---

Andrey Shestakov, leading yacht broker of the sales department of Shestakov Yacht Sales Inc. Shestakov Yacht Sales Inc., the official representative of the Miami/Fort Lauderdale FL headquarters.

---

## Contact details

---

Email: [andrey@shestakovyachtsales.com](mailto:andrey@shestakovyachtsales.com)

Web: [shestakovyachtsales.com/en/](http://shestakovyachtsales.com/en/)

---

## Telephones

---

USA: +1(954)274-4435

---

## Office hours

---

Monday – Saturday: **9:00 - 21:00** EDT

Sunday: **closed**

---

## Address

---



Harbour Towne Marina, 850 NE 3rd St,  
STE 213, Dania, FL 33004