

PLUNDERED BOOTY — TRITON



Builder: TRITON

Year Built: 2006

Model: Walkaround

Price: PRICE ON APPLICATION

Location: United States

LOA: 26' 0" (7.92m)

Beam: 9' 0" (2.74m)

Min Draft: 1' 9" (0.53m)

Max Draft: 1' 9" (0.53m)

Our experienced yacht broker, Andrey Shestakov, will help you choose and buy a yacht that best suits your needs **PLUNDERED BOOTY — TRITON** from our catalogue. Presently, at Shestakov Yacht Sales Inc., we have a wide variety of yachts available on our sale's list. We also work in close contact with all the big yacht manufacturers from all over the world.

If you would like to buy a yacht **PLUNDERED BOOTY — TRITON** or would like help answering any questions concerning purchasing, selling or chartering a yacht, please call **+1(954)274-4435**

TABLE OF CONTENTS

TABLE OF CONTENTS	2
SPECIFICATIONS	4
Overview	4
Basic Information	4
Dimensions	4
Speed, Capacities and Weight	4
Accommodations	4
Hull and Deck Information	5
Engine Information	5
DETAILED INFORMATION	6
Accommodations	6
Galley, Below Deck, Amidship Port	6
Helm / Electronics and Navigation	6
Deck	6
Engine and Mechanical Equipment	6
Electrical System / Equipment	7
Cockpit / Fishing Equipment	7
Additional Features / Equipment	7
Exclusions	7
Salesman's Comments	7
Exclusions	7
Disclaimer	7
PHOTOS	8
Profile 2 - Bow	8
Cabin - V-Berth	8
Head	8
Galley 1 - Refrigerator	8
Galley 2 - Microwave Oven	9

Galley 3 - Stove	9
Helm / Electronics & Navigation 1 - Electronics & Stereo Remote	9
Helm / Electronics & Navigation 2 - Lowrance GPS	9
Helm / Electronics & Navigation 3 - Stereo System	10
Helm / Electronics & Navigation 4 - Icom VHF Radio	10
Deck 1 - Helm Seat	10
Deck 2 - Companion Seat	10
Engine & Mechanical Equipment 1 - Yamaha Engines & Swim Ladder	11
Deck 3 - Aft Seating	11
Engine & Mechanical Equipment 2 - Yamaha F-225's	11
Engine & Mechanical Equipment 3 - Port Engine Hours	11
Engine & Mechanical Equipment 4 - Starboard Engine Hours	12
Engine & Mechanical Equipment 5 - Fuel Management	12
Engine & Mechanical Equipment 6 - Fuel System	12
Engine & Mechanical Equipment 7 - Panel	12
Cockpit / Fishing Equipment 1 - Tackle Storage	13
Electrical System / Equipment - Batteries	13
Cockpit / Fishing Equipment 2 - Fish Box	13
Cockpit / Fishing Equipment 3 - Live Well	13
CONTACTS	14
Contact details	14
Telephones	14
Office hours	14
Address	14

SPECIFICATIONS

Overview

The "Plundered Booty" is a 2006 2690 Triton Walkaround with twin 225 hp. Yamaha 4-Stroke outboards with 110 original hours! She shows near new, is stored in a garage and trailered for occasional weekend use! This 2690 Triton has never been bottom painted - She was originally lift kept. She is now sitting on a magic tilt aluminum trailer. Features such as microwave oven and stove have never been used. **AT \$59,000 SHE IS PRICED TO SELL!!! ACT NOW!!!**

Basic Information

Category: Walkaround

Model Year: 2006

Year Built: 2006

Country: United States

Vessel Top: Hardtop

Cockpit: Yes

Dimensions

LOA: 26' 0" (7.92m)

Beam: 9' 0" (2.74m)

Min Draft: 1' 9" (0.53m)

Max Draft: 1' 9" (0.53m)

Speed, Capacities and Weight

Displacement: 4900 Pounds

Fuel Capacity: 205 Gallons

Accommodations

Sleeps: 2

Total Heads: 1

Hull and Deck Information

Hull Material: Fiberglass

Deck Material: Fiberglass

Hull Configuration: Deep Vee

Engine Information

Engines: 2

Manufacturer: Yamaha

Model: F-225

Engine Type: Outboard

Fuel Type: Gas

DETAILED INFORMATION

Accommodations

V-berth with filler cushion sleeps two people for a total of two berths. One Head with sink and shower.

Galley, Below Deck, Amidship Port

- Kenyon alcohol stove
- Refrigerator w/ freezer
- Tappan microwave oven
- Pressure fresh water system

Helm / Electronics and Navigation

- Compass
- Icom M302 VHF radio
- Yamaha fuel management system
- AM / FM stereo system w/ remote at Helm
- Lowrance HD58 GPS / Chart plotter / Sounder

Deck

- Bridge curtain
- Swim platform
- Spreader lights
- Boarding ladder
- Navigation lights
- Bow pulpit w/ rails
- Windshield washer & wipers
- Fresh water, salt water Deck wash down system

Engine and Mechanical Equipment

- Trim tabs
- Fuel filters
- Bilge pumps
- Hydraulic steering
- Twin 225 hp. Gas O/B 2006 Yamaha F-225's w/ 110 hrs.

Electrical System / Equipment

- (3) Batteries

Cockpit / Fishing Equipment

- Live fish well
- (2) Fish boxes
- Cockpit storage
- Cockpit seating aft (removable)

Additional Features / Equipment

- 2006 Magic Tilt aluminum trailer

Exclusions

Owner's personal gear and items.

Salesman's Comments

The "Plundered Booty" is a 2006 2690 Triton Walkaround with twin 225 hp. Yamaha 4-Stroke outboards with 110 original hours! She shows near new, is stored in a garage and trailered for occasional weekend use! This 2690 Triton has never been bottom painted - She was originally lift kept. She is now sitting on a magic tilt aluminum trailer. Features such as microwave oven and stove have never been used. **AT \$59,000 SHE IS PRICED TO SELL!!! ACT NOW!!!**

Exclusions

Owner's personal belongings.

Disclaimer

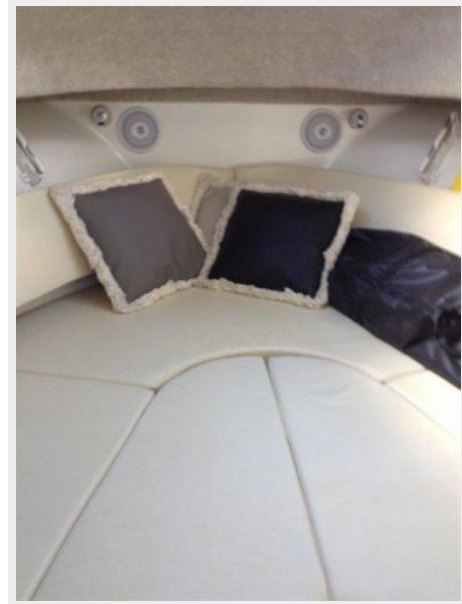
The Company offers the details of this vessel or yacht in good faith but cannot guarantee or warrant the accuracy of this information nor warrant the condition of the vessel. A buyer should instruct his representatives, agents, or his surveyors, to investigate such details as the buyer desires validated. This vessel or yacht is offered subject to prior sale, price change, or withdrawal without notice.

PHOTOS

Profile 2 - Bow



Cabin - V-Berth



Head



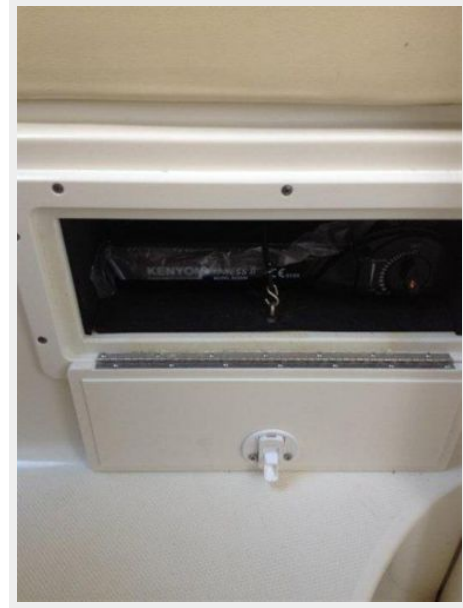
Galley 1 - Refrigerator



Galley 2 - Microwave Oven



Galley 3 - Stove



**Helm / Electronics & Navigation 1 -
Electronics & Stereo Remote**



**Helm / Electronics & Navigation 2 -
Lowrance GPS**



Helm / Electronics & Navigation 3 - Stereo System



Helm / Electronics & Navigation 4 - Icom VHF Radio



Deck 1 - Helm Seat



Deck 2 - Companion Seat



Deck 3 - Aft Seating



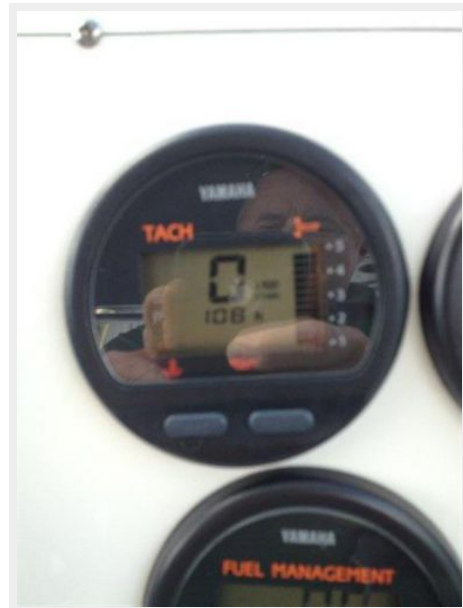
Engine & Mechanical Equipment 1 - Yamaha Engines & Swim Ladder



Engine & Mechanical Equipment 2 - Yamaha F-225's



Engine & Mechanical Equipment 3 - Port Engine Hours



Engine & Mechanical Equipment 4 - Starboard Engine Hours



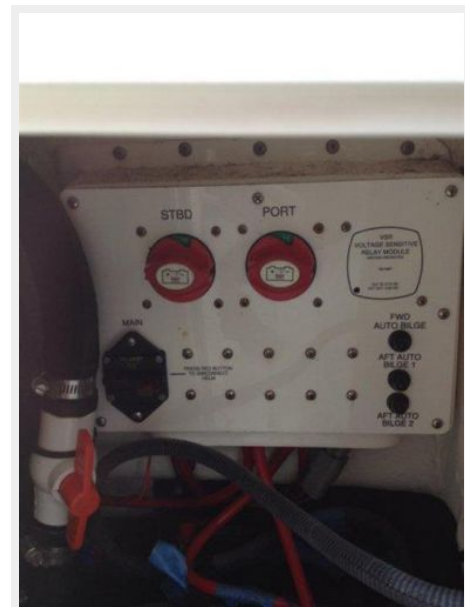
Engine & Mechanical Equipment 5 - Fuel Management



Engine & Mechanical Equipment 6 - Fuel System



Engine & Mechanical Equipment 7 - Panel



Electrical System / Equipment - Batteries



Cockpit / Fishing Equipment 1 - Tackle Storage



Cockpit / Fishing Equipment 2 - Fish Box



Cockpit / Fishing Equipment 3 - Live Well



CONTACTS

Andrey Shestakov, leading yacht broker of the sales department of Shestakov Yacht Sales Inc. Shestakov Yacht Sales Inc., the official representative of the Miami/Fort Lauderdale FL headquarters.

Contact details

Email: andrey@shestakovyachtsales.com

Web: shestakovyachtsales.com/en/

Telephones

USA: +1(954)274-4435

Office hours

Monday – Saturday: **9:00 - 21:00** EDT

Sunday: **closed**

Address



Harbour Towne Marina, 850 NE 3rd St,
STE 213, Dania, FL 33004