

## BELLE VIE — SEA RAY



**Builder:** SEA RAY

**Year Built:** 2007

**Model:** Motor Yacht

**Price:** PRICE ON APPLICATION

**Location:** United States

**LOA:** 48' 0" (14.63m)

**Beam:** 14' 8" (4.47m)

**Min Draft:** 3' 8" (1.12m)

Our experienced yacht broker, Andrey Shestakov, will help you choose and buy a yacht that best suits your needs **Belle Vie — SEA RAY** from our catalogue. Presently, at Shestakov Yacht Sales Inc., we have a wide variety of yachts available on our sale's list. We also work in close contact with all the big yacht manufacturers from all over the world.

If you would like to buy a yacht **Belle Vie — SEA RAY** or would like help answering any questions concerning purchasing, selling or chartering a yacht, please call **+1(954)274-4435**

# TABLE OF CONTENTS

---

TABLE OF CONTENTS	2
SPECIFICATIONS	5
Basic Information	5
Dimensions	5
Speed, Capacities and Weight	5
Accommodations	5
Hull and Deck Information	5
Engine Information	6
DETAILED INFORMATION	7
Vessel Walkthrough	7
Aft Deck/ Transom	7
Hull & Deck Features	7
Cockpit	9
Salon	9
Galley	10
Forward Stateroom	10
Forward Stateroom Head- Port	11
Forward Stateroom Shower - Starboard	11
Companionway	11
Mid Stateroom	11
Mid Stateroom Head/ Shower	11
Helm /Electronics	12
Mechanical / Engine	12
Electronics	13
Electrical Systems	14
Underwater Gear	14
Exclusions	15
Disclaimer	15

PHOTOS	16
Bow Profile	16
Starboard Profile	16
Port Aft Profile	16
Port Profile	16
Teak Cockpit Flooring	16
Cockpit	16
Cockpit Sink/TV	17
Cockpit Seating To Port	17
Dual Helm Chairs - Swivel	17
Helm	17
Helm Electronics	17
Helm Electronics	17
Companionway Stairway To Salon	18
Helm Overview	18
Salon Forward	18
Salon Aft	18
salon L-Shape Sofa	18
Salon Starboard	18
Galley Starboard	19
Galley Stainless Steel Stove & Refrigerator	19
Forward Stateroom Forward	19
Forward Stateroom To Port	19
Forward Stateroom Head	19
Forward Stateroom Shower	19
Companionway	20
Washer/Dryer Combo	20
Port Stateroom (1)	20
Port Stateroom (2)	20

---

Port Stateroom Head	21
Port Stateroom Shower	21
Windlass	21
Bow	21
Engine Room	21
Raymarine Radar & SAT TV	21
Engine Room	22
Engine Room	22
CONTACTS	23
Contact details	23
Telephones	23
Office hours	23
Address	23

---

# SPECIFICATIONS

---

## Basic Information

---

**Category:** Motor Yacht

**Model Year:** 2008

**Year Built:** 2007

**Country:** United States

**Vessel Top:** 2363

## Dimensions

---

**LOA:** 48' 0" (14.63m)

**Beam:** 14' 8" (4.47m)

**Min Draft:** 3' 8" (1.12m)

## Speed, Capacities and Weight

---

**Displacement:** 34250 Pounds

**Gross Tonnage:** 17 Pounds

**Water Capacity:** 110 Gallons

**Holding Tank:** 60 Gallons

**Fuel Capacity:** 400 Gallons

## Accommodations

---

**Total Cabins:** 2

**Total Heads:** 1

## Hull and Deck Information

---

**Hull Material:** FRP

**Hull Configuration:** Modified V-Hull

**Hull Color:** White

**Hull Designer:** Sea Ray

**Exterior Designer:** Sea Ray

**Interior Designer:** Sea Ray

---

## Engine Information

---

**Engines:** 2

**Manufacturer:** Cummins

**Model:** QSC 540

**Engine Type:** Inboard

**Fuel Type:** Diesel

---

# DETAILED INFORMATION

---

## Vessel Walkthrough

---

**Belle Vie** is a 2008 48' Sea Ray Sundancer that has been well maintained and is located in St. Petersburg, Florida. This vessel is equipped with Twin Cummins QSC-540 Diesel Inboards (T-517 hp) engines, two staterooms and two heads. Low engine hours - 498. The aft deck and cockpit are upgraded with teak flooring.

**Belle Vie** is equipped with a teak hydraulic swim platform. To the port side is access to the cockpit where there is a lower area and an upper area, both sections of the cockpit are completely teaked. The lower area includes a bar with sink and refrigerator, the upper cockpit area is air conditioned. To the starboard is a high gloss teak table with L-shaped seating. There is a flat screen TV mounted on the port side & just forward of that is additional companion seating. The helm is located to the starboard side w/dual swivel helm seats. The helm is equipped with Raymarine electronics and bow thruster.

**Belle Vie's** lower area is spacious with Light Cherry High Gloss cabinetry, a full L-shaped couch with ottoman to port and a complete galley to the starboard with wood floors. The galley is equipped with stainless steel refrigeration and freezer space, microwave, sink and lots of storage.

**Belle Vie's** forward stateroom is in the bow, just forward of the galley and salon. The forward stateroom has a full size island-style bed with drawer storage, wood blinds, 2 lighted hanging lockers and privacy door with full length mirror. The forward head is to port and shower to starboard with a privacy door from the stateroom. The mid stateroom is aft of the galley and salon and has twin beds with a slide system to convert into a queen size bed. The mid stateroom head/shower has a large vanity with sink and storage. **Belle Vie** is a must see!

**To View The Slideshow To Belle Vie Visit:**

<http://caryjohn.zenfolio.com/searay48bellevie/slideshow>

---

## Aft Deck/ Transom

---

- Hydraulic Swim Platform **UPGRADE**
- Teak Swim Platform **UPGRADE**
- Teak Aft Deck & Cockpit **UPGRADE**
- Underwater Lighting **UPGRADE**

---

## Hull & Deck Features

---

- Sunpad Forward Deck **UPGRADE**

- Stainless Steel Anchor **UPGRADE**
- Spotlight w/Dual Halogen Bulbs (ACR) **UPGRADE**
- Yacht Flag & Flag Pole **UPGRADE**
- White Hull - Gelcoat
- Bridge Hardtop
- Bow Rail, 316 Stainless Steelw/Welded Stanchions, Intermediate Rails & Life Lines
- Canvas Colors (Blue, Black, Pewter)
- Cleats, Custom Sea Ray Thru- Bolted - Stainless Steel (8)
- Deck Fill Plates, Stainless Steel
- Deck Rails, 316 Stainless Steel
- Drain Plugs, Brass-Threaded - Garboard
- Graphics, Striping
- Handrails, 316 Stainless Steel
- Hatch, Deck Vent – Translucent w/Locks & Sky Screen Cover (Trapezoid)
- Hull Windows, Stainless Steel (6 Fixed)
- Lights, Navigation
- Portlights, Stainless Steel (3 Opening, 3 Fixed)
- Resin, High-Performance Vinylester
- Rub Rail, PVC w/Stainless-Steel Insert
- Skylight, Flush Mount w/Retractable Sunshade - Salon
- Storage, Transom Wall (For Fenders & Gear)
- Stringer System, Fiberglass
- Swim Platform, Integral/Extended w/Concealed Stainless-Steel Four-
- Step Swim Ladder w/Integral GrabHandle
- Thru-Hull Fittings, Stainless Steel
- Toe Rail, Molded Fiberglass - Deck
- Vent System, Engine Room - Integral w/Stainless-Steel Accents
- Windshield, Tempered/Tinted Curved Glass w/Aluminum Frame, & Electric Front Vents
- Windshield Washer System
- Windshield Wipers w/Delay & Speed Control

### **Canvas (Sunbrella):**

- Aft Curtain w/Bungee Cords
- Canvas Storage Bag

### **Windlass System:**

- Anchor, Galvanized
- Anchor Chute, Stainless Steel
- Anchor Rope/Chain Storage w/Gas- Assisted Hatches (2)
- Anchor Washdown Spigot w/Hose
- Windlass, Rope/Chain w/Foot Switches



---

## Cockpit

---

- Teak Flooring **UPGRADE**
- LCD TV/DVD **UPGRADE**
- Cockpit Air w/Generator **UPGRADE**
- Refrigerator 120/60 **UPGRADE**
- Rod Holders (2) **UPGRADE**
- Third Helm Seat In Lieu Of Bridge Cabinet
- Beverage Holders (10)
- Carpet Liner, Snap-In
- Door, Sliding Cabin Entry - Acrylic
- Door, Transom
- Handrails, 316 Stainless Steel
- Hardtop, Fiberglass w/Vent Hatches (2) & Overhead Lighting
- Hatch, Engine Service – Gas Assisted
- Ice maker, 120V
- Lighting, Indirect
- Outlet, 12V Accessory
- Outlet, 120V GFI Protected
- Seating, L-Shaped Bench w/Molded Fiberglass Base & Euro-Style Backrest
- Seating - Pivoting Double Helm - Custom Euro-Style w/Flip-Up Thigh-Rise Bolster, Armrests & Heavy-Duty
- Pedestal w/Slides, & Pneumatic Vertical Adjustment (Helm Only)
- Seating, U-Shaped Aft w/Storage Below
- Ship's Bell
- Steps, Boarding (Molded-In)
- Stereo, Clarion 12V AM/FM Single CD, Sirius® Satellite Receiver w/Antenna, 6-Disc CD Changer,
- Amplifier, Subwoofer, Speakers (4) & Digital Cockpit Remote Control
- Storage, Side Panel - Starboard
- Table, Cockpit - Fiberglass
- Wet Bar w/Sink, Faucet, Solid- Surface Countertop, Stainless- Steel Handrail, Trash Receptacle

---

## Salon

---

- Ottomon - Sofa **UPGRADE**
- Brisa Desert Clay Upholstery **UPGRADE**
- Light Cherry Wood Finish **UPGRADE**
- HD DSS TV System **UPGRADE**

- Light Carpet
- Entertainment Center - Gaming System Port - MP3 Port w/12V Outlet - Stereo, Clarion 12V AM/FM Single CD, Sirius Satellite Receiver w/Antenna, 6-Disc CD Changer, Amplifier & Speakers (4) - Storage Cabinet - CD & Videotapes - TV, 26" Flatscreen LCD (120V) w/Remote DVD Player
- Mirror, Wall Accent
- Seating, L-Shaped Sofa w/Pull-Out Bed (Ultraleather HP) - Port
- Storage, Gunwale Cabinets
- Table, Dinette (Movable) Hi-Lo w/High-Gloss Wood Surface

## Galley

---

- Wood Flooring **UPGRADE**
- Light Cherry Wood Finish **UPGRADE**
- Coffeemaker, 120V
- Countertop, Solid-Surface w/Stainless-Steel Sink, Single- Lever Grohe® Faucet & Sink Cover
- Handrail, Stainless Steel
- Microwave/Convection Oven w/Stainless-Steel Front - 120V
- Power Vent, 12V w/Stainless-Steel Grill
- Refrigerator/Freezer, Upright w/Stainless-Steel Front - 120V
- Storage, Drawers w/Cutlery Insert
- Storage, Upper & Lower w/Designated Plate & Glass Storage
- Stove, Two-Burner (Surface Mounted) w/Safety Rail - 240V
- Trash Receptacle w/Chute & Solid- Surface Cover

## Forward Stateroom

---

- Light Cherry Wood Finish **UPGRADE**
- Wood Flooring **UPGRADE**
- Wired for Direct TV Box **UPGRADE**
- **Custom** After Market Bedding, Full-Size Island-Style w/Innerspring Mattress, Pillows, Sheets, Coordinated Spread & Drawer Storage Below **UPGRADE**
- Wood Blinds
- Door, Privacy (Sliding Pocket) w/Full- Length Mirror
- Flooring, Wood - Lower Berth Step Area & Between Head/Shower Area
- Hanging Lockers (2) w/Lights – Port & Starboard
- Mirrored Rope Locker - Bulkhead
- Storage, Side Shelves
- TV, 15" Flatscreen w/DVD Player

---

## Forward Stateroom Head- Port

---

- Light Cherry Wood Finish
- Door, Privacy - Access from Forward Stateroom
- Bathroom Tissue Holder
- Handrails, Stainless Steel
- Head, VacuFlush
- Power Vent, 12V
- Robe Hook
- Storage, Gunwale Cabinet
- Storage, Medicine Cabinet - Mirrored
- Vanity w/Solid-Surface Countertop, Sink, Grohe Faucet, & Storage Below

---

## Forward Stateroom Shower - Starboard

---

- Shower Curtain
- Door, Privacy - Access from Forward Stateroom
- Handrail, Stainless Steel
- Shower w/Seat & Adjustable Grohe
- Shower Wand
- Towel Rings (2)

---

## Companionway

---

- Washer/Dryer Combo 120V/60 **UPGRADE**

---

## Mid Stateroom

---

- LCD TV/DVD **UPGRADE**
- Light Cherry Wood Finish **UPGRADE**
- Beds, Twin (2) w/Mattresses, Pillows, Sheets & Coordinated Spreads w/ Slide System to Convert into Queen-Size Bed
- Door, Privacy
- Hanging Locker w/Light & Shelves
- Portlight, Stainless Steel - Opening
- Storage, Cabinets - Starboard

---

## Mid Stateroom Head/ Shower

---

- Light Cherry Wood Finish

- Curtain, Shower
- Door, Privacy - Access from Mid-Stateroom
- Handrail, Stainless Steel
- Head, VacuFlush
- Robe Hook
- Storage, Medicine Cabinet - Mirrored
- Shower w/Seat & Adjustable Grohe Shower Wand
- Towel Ring
- Vanity w/Solid-Surface Countertop, Sink, Grohe

---

## Helm /Electronics

---

### Control Station:

- Bow Thruster **UPGRADE**
- Raymarine E120 GPS/Chartplotter/Radar **UPGRADE**
- Alarms, High-Water - Bilge & Cabin
- Compass
- Dash, Gel Coated - Nickel
- Emergency Start System - Engines
- Horn, Air - Single Trumpet
- Instrument Panel, High-Gloss
- Power Steering, Hydraulic w/Tilt Wheel
- Shift & Throttle Controls – Electronic (Cummins ETS)
- SmartCraft Diagnostics: - Instrumentation, Custom Sea Ray SmartCraft w/Low-Glare Blue Night Lighting & Chrome Bezels - 4-in-1 Multigauges (2) (Includes: Fuel Level, Oil Pressure, Voltmeter & Water Temperature) - Tachometers (2)
- SmartCraft VesselView Display: - Propulsion: Engine Hour Meters, Engine Status, Performance and Fuel, Peak Performance, Boost Pressure (optional), Troll Control, Cruise Control - Vessel: Vessel Status, Tank Status, Steering Position, Generator Data and Start/Stop (Availability TBD) - Environment and Navigation: GPS Interface, Depth and Water Temperature, Depth Alerts, Trip Log Information, Fuel to Waypoint Data, Navigation Data - Active Alarms/Details - Alarm History/Details
- Switch Panel - High Gloss (Backlit)
- Switches, Illuminated Weatherproof
- Rockers & Electronic Dimmer Control

---

## Mechanical / Engine

---

### Engine Room:

- Spare Propellers w/Holder (pair) **UPGRADE**

### Engines:

- T-Cummins QSC-540 Diesel Inboards (T-517 hp) **UPGRADE**
- Engine Hours - 498

### Generator:

- Generator Sound Box **UPGRADE**
- 9.0 kW Onan – Diesel (120/240V/60 Cycle) w/Remote Start, Muffler, Closed Cooling, Fuel Filter, Seacock & Seawater Strainer
- Generator Hours - 845

### Air Conditioning/Heating:

- Zone-Controlled Reverse-Cycle System (30,000 BTU)
- Custom Integral Vent System

### Fuel System:

- Crossover Fuel System – Generator Only
- Fuel Filters - Remote (Racor)
- Fuel Lines, USCG - Type A-1
- Fuel Tanks, Aluminum w/Manual Shutoff Valves & Ultrasonic Sending Units

### Water System:

- Freshwater Washdown Spigots w/Hoses - Transom, Engine Room & Anchor Locker
- Pressure Water System w/12V Pump & Charcoal Filtration System
- Manifold System w/Shutoff Valves
- Shower, Cockpit - Hot & Cold
- Water Heater, 240V (11-Gallon)
- Water Inlet, Dockside

### Waste System:

- Macerator w/Seacock Interlock System **UPGRADE**
- Head System (VacuFlush)
- Holding Tank Level Indicators – MDP & Heads
- Holding Tank w/Dockside Pump-Out
- Sump Box w/Pump – Automatic

## Electronics

- DSS Satellite TV System **UPGRADE**

- Wired for (3) Direct TV Boxes **UPGRADE**
- Premium Audio **UPGRADE**
- Autopilot - Raypilot ST 8002 **UPGRADE**
- Raymarine E120 GPS/Chartplotter /Radar **UPGRADE**
- Electronics Circuit, 50 Amp/12V
- VHF Radio w/Remote Speaker & 8' Fiberglass Antenna

---

## Electrical Systems

---

- 120 Volt/60 Cycle Electrical System **UPGRADE**
- Batteries, 8-D w/Boxes (2)
- Battery Charger/Converter 120V/50 Amp/12V
- Battery Charger Overcurrent Protection
- Battery Switches, 2-Way Solenoid Activated (MDP & Bilge)
- Cable TV System w/Inlet (Includes Phone Inlet), TV & Phone Shore Cords, Coax Outlets, Gain Control & Omni Directional Antenna
- Panel, DC Circuit Breaker - Remote
- Panel, DC Main Breaker
- Panel, Main Distribution - AC
- Panel, Main Distribution - DC
- Shore Power, Cablemaster (Glendinning) 240V/50 Amp w/75' Cord & Wireless Remote (Cablemaster Not Available w/220V/50 Cycle Shore Power)
- Transformer, Shore Power Isolation - 240V/50 Amp
- Wiring, Color-Coded w/Chafe Protection

---

## Underwater Gear

---

- Underwater Lighting
- Bonding System w/Zinc Hull Plate
- Propeller Shafts, 2" Stainless Steel (2) - Aquamet 22
- Propellers, Nibral 4-Blade Cup
- Rudders, Manganese-Bronze w/Stainless-Steel Posts
- Seacocks on all Underwater Fittings
- Seawater Strainers Shaft Logs, Dripless w/Extra Seal
- Carrier Kit
- Struts, Manganese-Bronze
- Trim Tabs, Hydraulic

## Exclusions

---

Owner's personal belongings.

## Disclaimer

---

The Company offers the details of this vessel or yacht in good faith but cannot guarantee or warrant the accuracy of this information nor warrant the condition of the vessel. A buyer should instruct his representatives, agents, or his surveyors, to investigate such details as the buyer desires validated. This vessel or yacht is offered subject to prior sale, price change, or withdrawal without notice.

# PHOTOS

**Starboard Profile**



**Bow Profile**



**Port Profile**



**Port Aft Profile**



**Teak Cockpit Flooring**



**Cockpit**





**Cockpit Sink/TV**



**Cockpit Seating To Port**



**Helm**



**Dual Helm Chairs - Swivel**



**Helm Electronics**



**Helm Electronics**



**Helm Overview**



**Companionway Stairway To Salon**



**Salon Forward**



**Salon Aft**



**salon L-Shape Sofa**



**Salon Starboard**





**Galley Starboard**



**Galley Stainless Steel Stove & Refrigerator**



**Forward Stateroom Forward**



**Forward Stateroom To Port**



**Forward Stateroom Head**



**Forward Stateroom Shower**



**Companionway**



**Washer/Dryer Combo**



**Port Stateroom (1)**



**Port Stateroom (2)**





**Port Stateroom Head**



**Port Stateroom Shower**



**Windlass**



**Bow**



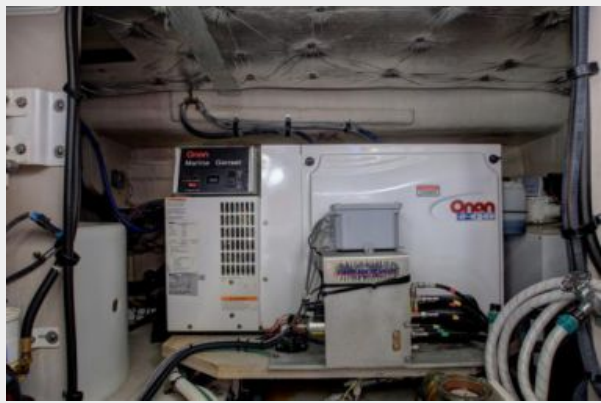
**Raymarine Radar & SAT TV**



**Engine Room**



**Engine Room**



**Engine Room**



# CONTACTS

---

Andrey Shestakov, leading yacht broker of the sales department of Shestakov Yacht Sales Inc. Shestakov Yacht Sales Inc., the official representative of the Miami/Fort Lauderdale FL headquarters.

## Contact details

---

Email: [andrey@shestakovyachtsales.com](mailto:andrey@shestakovyachtsales.com)

Web: [shestakovyachtsales.com/en/](http://shestakovyachtsales.com/en/)

## Telephones

---

USA: +1(954)274-4435

## Office hours

---

Monday – Saturday: **9:00 - 21:00** EDT

Sunday: **closed**

## Address

---



Harbour Towne Marina, 850 NE 3rd St,  
STE 213, Dania, FL 33004