

NEW BACK COVE 41 — BACK COVE



Builder: BACK COVE

Year Built: 2015

Model: Cruiser

Price: PRICE ON APPLICATION

Location: United States

LOA: 41' 0" (12.50m)

Beam: 13' 10" (4.22m)

Min Draft: 3' 7" (1.09m)

Cruise Speed: 26 Kts. (30 MPH)

Max Speed: 29 Kts. (33 MPH)

Our experienced yacht broker, Andrey Shestakov, will help you choose and buy a yacht that best suits your needs **NEW Back Cove 41 — BACK COVE** from our catalogue. Presently, at Shestakov Yacht Sales Inc., we have a wide variety of yachts available on our sale's list. We also work in close contact with all the big yacht manufacturers from all over the world.

If you would like to buy a yacht **NEW Back Cove 41 — BACK COVE** or would like help answering any questions concerning purchasing, selling or chartering a yacht, please call **+1(954)274-4435**

TABLE OF CONTENTS

TABLE OF CONTENTS	2
SPECIFICATIONS	4
Basic Information	4
Dimensions	4
Speed, Capacities and Weight	4
Accommodations	4
Hull and Deck Information	4
Engine Information	5
DETAILED INFORMATION	6
Overview	6
Hull	6
Deck	6
Helm Deck Galley	7
Helm Deck / Salon Area	7
Mechanical Systems	7
Electrical Systems	8
Master Stateroom	8
Guest Stateroom	9
Master Head	9
Day Head	10
Additional Information	10
Exclusions	10
Disclaimer	10
PHOTOS	11
Profile	11
Running	11
Layout	11
Looking Forward	11

Staterooms	13
Cockpit Seating	14
CONTACTS	15
Contact details	15
Telephones	15
Office hours	15
Address	15

SPECIFICATIONS

Basic Information

Category: Cruiser

Sub Category: Downeast

Model Year: 2015

Year Built: 2015

Country: United States

Vessel Top: 2363

Cockpit: Yes

Dimensions

LOA: 41' 0" (12.50m)

Beam: 13' 10" (4.22m)

Min Draft: 3' 7" (1.09m)

Speed, Capacities and Weight

Cruise Speed: 26 Kts. (30 MPH)

Max Speed: 29 Kts. (33 MPH)

Water Capacity: 140 Gallons

Fuel Capacity: 400 Gallons

Accommodations

Total Cabins: 2

Total Berths: 2

Sleeps: 4

Total Heads: 2

Hull and Deck Information

Hull Material: Fiberglass

Hull Configuration: Modified Deep Vee

Engine Information

Engines: 1

Manufacturer: Cummins

Model: QSC 8.3

Engine Type: Inboard

Fuel Type: Diesel

DETAILED INFORMATION

Overview

Back Cove intends the 41 to be unequalled in its class in terms of the efficiency of its operation, the thoughtfulness of its design, and the execution of its build. The Back Cove 41 is the largest Back Cove to date and will be fitted with an efficient single Cummins 600hp diesel engine. The yacht will also be equipped with bow and stern thrusters, a generator set and reverse cycle heat and air conditioning systems are standard. The focus of her balanced interior arrangement is on her two comfortable staterooms each with a private head. The centralized galley location serves the open air cockpit as easily as the salon. Kevin Burns, Vice President of Design and Product Development says, "The 41 was conceived from the onset to serve as the flagship of the Back Cove fleet. Clean, purposeful lines and naturally pleasing proportions dominate the profile and are supported by serious attention to the sculpted details that set today's Back Coves apart from their peers."

Hull

- Back Cove white iso-npg gelcoat
- Vinylester backup resin
- VIP Resin Infused hull w/ PVC foam core sandwich
- VIP Resin Infused foam core stringer system
- Advanced prop pocket hull design
- Awlgrip boot top
- Molded cove stripe depression w/ "gold leaf" style stripe

Deck

- Back Cove white iso-npg gelcoat w/ graystone anti-skid on walking surfaces
- VIP Resin Infused core sandwich structure
- (8) Mooring cleats forward, aft and spring line cleats.
- Molded composite bow sprit w/ stainless steel anchor roller and windlass
- Anchor locker w/ ground tackle storage
- 12V navigation and anchor lights
- Side deck door system at helm
- Teak accent stripe on cabin side
- Custom 1-1/4" 316L stainless steel perimeter rail
- SS handrails concealed under hardtop, port and starboard
- Compressed air horn on hardtop (mast opt.)
- (6) opening Port lights w/ insect screens and blinds
- Port & starboard molded steps leading to side & fore deck

- Cockpit hatches to lazzerette and engine room
- Transom door on centerline
- Swim platform w/ SS under-mount swim ladder
- Hot and cold cockpit shower
- Self draining cockpit

Helm Deck Galley

- Electric two burner cook-top
- AC/DC stainless steel, (2) drawer-type fridge compartments
- AC/DC freezer beneath companionway steps
- Large SS galley sink w/ single lever faucet & drop in cover
- Solid surface countertop
- Under-counter convection microwave
- Drawer and doors storage below counter
- Overhead storage lockers
- "Teak and Holly" high pressure laminate sole w/ surface texture

Helm Deck / Salon Area

- Color matched windows w/ opening windows port, starboard and center
- (3) windshield wipers w/ fresh water washer system
- Lewmar sliding hatch w/ OCEANair Skyscreen
- Compass, illuminated
- Stazo wood grain steering wheel
- (2) Stidd 500N series helm and mate seats
- Mates lounge to port
- Large bilge storage below helm sole, access by gas strut assisted hatch
- Large engine room hatch opens by switch-controlled actuator
- Convertible dinette to starboard
- Headliner with padded panels
- XM friendly stereo system w/ CD, MP3 jack and wired helm remote
- Interior / cockpit speakers
- LED Television on actuated lift
- "Teak and Holly" high pressure laminate sole w/ surface texture

Mechanical Systems

- Cummins QSC 8.3 600 hp electronic engine and marine gear
- 2.25" Aquamet shaft
- 4 Blade NiBrAl propeller

- PSS Dripless shaft log
- Binnacle mount electronic single lever engine control
- Digital engine display
- Internal sea strainer
- Racor Fuel Filter
- 8" Exhaust with two stage horizontal muffler
- Electric actuated trim tabs port and starboard w/ helm indicators
- SeaStar hydraulic steering w/ tilt helm pump
- Sidepower bow thruster w/ joy stick control (SE100i)
- Sidepower stern thruster w/ joy stick control (SE100i)
- Hot and cold pressurized water
- 11 gallon hot water heater w/ heat exchanger
- Marelon sea valves on underwater thru hulls
- Automatic fire extinguisher system w/ manual back-up
- Three zone air conditioning w/ reverse cycle heat

Electrical Systems

- AC and DC control panels with polarity indicator
- DC system battery management switching
- DC breakers for electronics
- Emergency cross over switch / ACR
- 240V AC 50 amp shorepower inlet & 50ft cord w/ cord reel
- AC shorepower system ELCI protected
- Galvanic isolator – fail proof
- Onan 9.0 kw gen set in sound shield with water separator exhaust
- GFI protected 110V circuits
- Battery Charger
- (2) 4D AGM house battery
- (3) Group 31 AGM engine start battery
- (3) 12VDC automatic bilge pumps
- Bonding system w/ zinc transom anode
- Mechanical / Utility space LED lighting with bezel switch
- Cockpit courtesy lights switched at transom door and helm
- Guest cabin courtesy lights switched at guest berth and helm
- Master cabin courtesy lights switched at helm and island berth
- Overhead LED lights w/ dimmer control throughout Cabins, Galley, Salon and Cockpit
- Overhead tri-color LED light at helm station
- 12V outlets at helm, guest cabin, and master stateroom

Master Stateroom

- Cherry interior on molded composite hull liner
- Lewmar hatch w/ OCEANair Skyscreen
- (2) Stainless steel opening ports w/ insect screens
- “Teak and Holly” high pressure laminate sole w/ surface texture
- Molded headliner with padded panels
- Island queen berth w/ drawers and storage below
- Lockers outboard
- Cherry hull ceiling
- Cedar lined hanging locker to port
- Multi drawer bureau w/ dovetailed drawers to starboard
- Reading Lights
- LED overhead lighting with additional reading lights
- Electronics charging station

Guest Stateroom

- Cherry interior on molded composite hull liner
- Lewmar hatch w/ OCEANair Skyscreen
- Stainless steel opening port w/ insect screen
- “Teak and Holly” high pressure laminate sole w/ surface texture
- Molded headliner with padded panels
- Queen berth w/ storage below
- Cedar lined hanging locker
- Berthside table
- LED overhead lighting with additional reading lights
- Electronics charging station

Master Head

- Head w/ separate shower stall w/ bi-fold door
- Molded seat in shower stall w/ storage beneath
- Built-in vanity w/ sink
- Lewmar hatch w/ OCEANair Skyscreen
- (2) Stainless steel opening ports w/ insect screens and shades
- Cherry framed mirror
- Full length mirror on door
- Solid surface countertop
- Single lever faucet
- Shower drain sump pump system
- Fresh water electric MSD w/ holding tank
- Waste tank level monitor
- Macerator for holding tank overboard discharge as permitted

- Holding tank pump out fitting on deck
- Sealed overhead lighting w/ bezel switch
- Powered exhaust fan (12V)

Day Head

- Built-in vanity w/ sink
- Lewmar hatch w/ OCEANair Skyscreen
- Stainless steel opening port w/ insect screen and shade
- Cherry framed mirror
- Full length mirror on door
- Solid surface countertop
- Single lever faucet
- Shower drain sump pump system
- Fresh water electric MSD w/ holding tank
- Sealed overhead lighting w/ bezel switch
- Powered exhaust fan (12V)

Additional Information

- Freight & Make Ready Additional
- All photos are manufacturer photos
- Call today and order your own Back Cove 41

Exclusions

Owner's personal belongings.

Disclaimer

The Company offers the details of this vessel or yacht in good faith but cannot guarantee or warrant the accuracy of this information nor warrant the condition of the vessel. A buyer should instruct his representatives, agents, or his surveyors, to investigate such details as the buyer desires validated. This vessel or yacht is offered subject to prior sale, price change, or withdrawal without notice.

PHOTOS

Profile



Running



Looking Forward

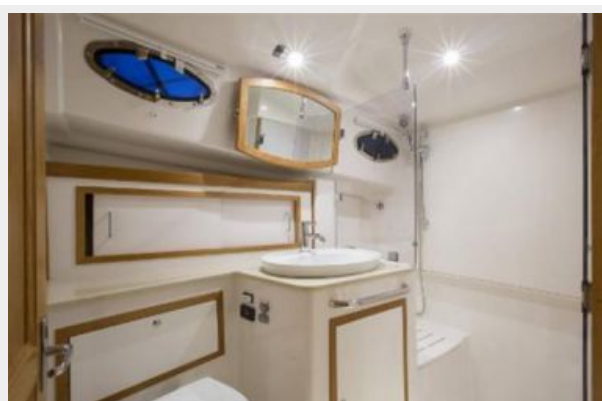


Layout





Staterooms





Cockpit Seating



CONTACTS

Andrey Shestakov, leading yacht broker of the sales department of Shestakov Yacht Sales Inc. Shestakov Yacht Sales Inc., the official representative of the Miami/Fort Lauderdale FL headquarters.

Contact details

Email: **andrey@shestakovyachtsales.com**

Web: shestakovyachtsales.com/en/

Telephones

USA: **+1(954)274-4435**

Office hours

Monday – Saturday: **9:00 - 21:00 EDT**

Sunday: **closed**

Address



Harbour Towne Marina, 850 NE 3rd St,
STE 213, Dania, FL 33004