

DREAM CATCHER — BERTRAM



Builder: BERTRAM

Year Built: 1982

Model: Sport Fisherman

Price: PRICE ON APPLICATION

Location: United States

LOA: 46' 0" (14.02m)

Beam: 16' 0" (4.88m)

Min Draft: 4' 6" (1.37m)

Cruise Speed: 25 Kts. (29 MPH)

Our experienced yacht broker, Andrey Shestakov, will help you choose and buy a yacht that best suits your needs **Dream Catcher — BERTRAM** from our catalogue. Presently, at Shestakov Yacht Sales Inc., we have a wide variety of yachts available on our sale's list. We also work in close contact with all the big yacht manufacturers from all over the world.

If you would like to buy a yacht **Dream Catcher — BERTRAM** or would like help answering any questions concerning purchasing, selling or chartering a yacht, please call **+1(954)274-4435**

TABLE OF CONTENTS

TABLE OF CONTENTS	2
SPECIFICATIONS	4
Overview	4
Basic Information	4
Dimensions	4
Speed, Capacities and Weight	5
Accommodations	5
Hull and Deck Information	5
Engine Information	5
DETAILED INFORMATION	6
Overview	6
Salon	6
Galley	6
Master Stateroom	7
Master Head	7
Starboard Guest Stateroom	7
Forward Berth	7
Guest Head	8
Fly Bridge	8
Electronics	8
Electrical Equipment	9
Mechanical	9
Engine Room	9
Cockpit	10
Hull	10
Exclusions	10
Disclaimer	11
PHOTOS	12

CONTACTS	20
Contact details	20
Telephones	20
Office hours	20
Address	20

SPECIFICATIONS

Overview

This is a one of a kind 46.6 Bertram, re-powered in 2005 with Cummins QSM 11 660 HP Common Rail Engines and has the very rare 3 stateroom layout. She has a fast and economical cruise speed of 26 knots. In addition to the new engines, speed and economy (55gph @ 25 knots) she has been customized to carry 880 gallons of fuel. The engine room alone makes this 46.6 Bertram one of a kind and must be seen to appreciate. During the repower she was equipped with a Power Tech 12.5 KW generator, solid one piece salon windows, stainless window frame hull side windows, new carpet, custom cockpit tackle center, new custom bridge console, Fast Rails (custom spray rails), Glass Tech cockpit deck, custom cockpit freezer and more, she carries updated electronics including new in 2011 Navnet vx2, Simrad ap24 autopilot, Furuno network sounder and radar. Additional updates include new headliner and wallpaper in staterooms and companionway (2011). This 46 Bertram is a proven blue water fishing machine. Why settle for the old, tired same old same old 46 Bertram when you can have this one of a kind, updated and fast 46 Bertram.

Basic Information

Category: Sport Fisherman

Sub Category: Convertible

Model Year: 1982

Year Built: 1982

Country: United States

Vessel Top: Bimini Top

Fly Bridge: Yes

Cockpit: Yes

Dimensions

LOA: 46' 0" (14.02m)

Beam: 16' 0" (4.88m)

Min Draft: 4' 6" (1.37m)

MFG Length: 46' 6" (14.17m)

Speed, Capacities and Weight

Cruise Speed: 25 Kts. (29 MPH)

Displacement: 44900 Pounds

Water Capacity: 250 Gallons

Fuel Capacity: 880 Gallons

Fuel Consumption: 55 Gallons

Accommodations

Total Cabins: 3

Sleeps: 8

Total Heads: 2

Hull and Deck Information

Hull Material: Fiberglass

Engine Information

Engines: 2

Manufacturer: Cummins

Model: QSM 11

Engine Type: Inboard

Fuel Type: Diesel

DETAILED INFORMATION

Overview

The Bertram 46 Convertible was for many years the standard by which other production sportfishing boats her size were measured. Her popularity had much to do with the precise handling and impressive seakeeping characteristics of her deep-V hull, a proven rough-water performer with a wide beam and low cockpit freeboard. The Bertram 46 is considered a classic sportfishing design. (PowerBoat Guide)

Salon

New Hatteras door in 2005

Solid one piece frameless stainless windows

Custom oversized U shaped sofa with massive storage

Sharp 32" Flat Screen T. V.

Ample Storage

Front Windshield Glassed In

Overhead Rod Racks

Window To cockpit Reset With Fiberglass Frame

JVC DVD/VHF and Stereo with Full Surround Sound

Galley

2 Under Counter Fridges

Edge Star Ice Maker Under Counter

Double Sink with Sink Covers

GE Profile Microwave

3 Burner Princess Stove with Cutting Board Cover

Under Counter Drawers

Master Stateroom

Double Berth

Samsung Flat Screen TV

Air Conditioner Controls

2 Hanging Closets

New Headliner and Wallpaper

Master Head

Remodeled in 2008

Silestone Counter Tops

Custom Wood Cabinets

Admiral Raritan Auto Flush Toilet

Full Shower

Stainless Sink

Built In Storage

Starboard Guest Stateroom

Over/Under Bunks

110 Rope Lighting

Hanging Locker

Wall Mirror

Drawer Storage Under Bunk

Air Conditioning Controls

New Headliner and Wallpaper

Forward Berth

V Berths

110 Rope Lighting

Hanging Locker

Wall Mirror

Drawer Storage Under Bunk

Air conditioning Controls

New Headliner and Wallpaper (2011)

Guest Head

Full Shower

Admiral Raritan Auto Flush Toilet

Wall Mirror

Fly Bridge

Custom Console

Bridge Cushions New in 2010

3 Sided Stratiglass Enclosure

Custom Rail Rod Holders (11 Rods)

Bench Seat

Fusion Stereo

ACR Spotlight New in 2011

Electronics

AP 24 Simrad Auto Pilot New in 2011

NavNet VX2 w/ 10" Screen New in 2011

NavNet C-Map

Furuno GPS Navigator GP-37

Furuno Network Sounder with 3,000 Watt Transducer

Furuno 48 Mile Radar

Icom 602 VHF

Icom 502 VHF

Lumishore TIX601 underwater color change lights

Electrical Equipment

12.5kw Power Tech Generator

Mechanical

Double Piston Trim Tabs

4 Cruise Air Air Conditioners

Stainless Hot Water Heater

Jacuzzi Pump for Livewell

Sure Flo 5.7GPM Fresh Water Pump

Sure Flo Commercial Grade Washdown Pump

2 Battery Chargers

Whale Dry Bilge Pump in Engine Room

Rule Mate 2000 Bilge Pump Aft

Rule Mate 1500 Bilge Pump FWD

Engine Room

Fuel Transfer Pump

Oil Change System for Engines, Generator and Gears

Oversized Engine Room Air Vents

Fire Suppression System

Diamond Plate Flooring

New Mufflers Installed 2012

Cockpit

Glass Tech Deck New in 2005

Custom Cockpit Tackle Center with Locker and Sink

Custom Cockpit Freezer

Pomponette 130 lb Fighting Chair with Rocket Launcher

Murray Bros Rocket Launcher

Pull-Up Cockpit Shade Cover

Rupp Out Riggers-Triple Spreader with Gold Spreader Bars

Fresh & Saltwater Washdown

Transom Door

Coaming Pads

Starboard Ladder Steps

Starboard Side Walls

Hull

Front Windshield Glassed In

All Hull Side Windows Replaced with 1 Piece Stainless Frame Windows

Rub Rail Replaced with Plastic Rub Rail

Custom Fast Rails (Spray Rails)

Exclusions

Owner's personal belongings.

Disclaimer

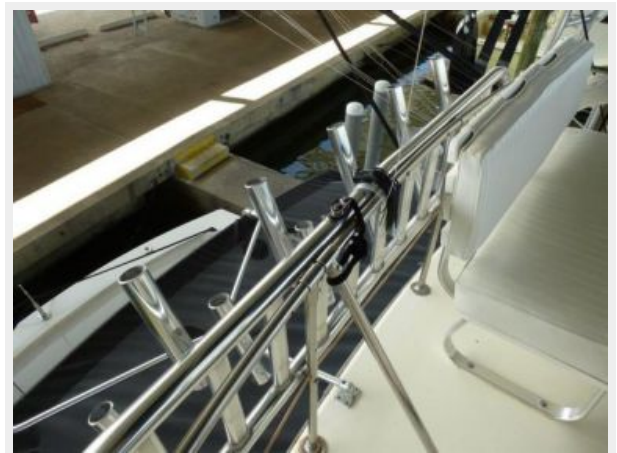
The Company offers the details of this vessel or yacht in good faith but cannot guarantee or warrant the accuracy of this information nor warrant the condition of the vessel. A buyer should instruct his representatives, agents, or his surveyors, to investigate such details as the buyer desires validated. This vessel or yacht is offered subject to prior sale, price change, or withdrawal without notice.

PHOTOS

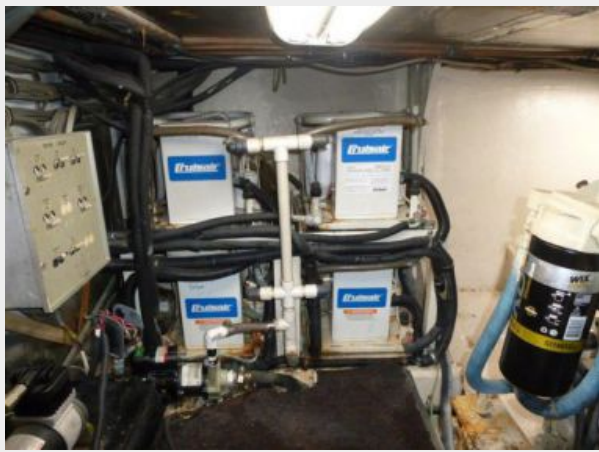
















CONTACTS

Andrey Shestakov, leading yacht broker of the sales department of Shestakov Yacht Sales Inc. Shestakov Yacht Sales Inc., the official representative of the Miami/Fort Lauderdale FL headquarters.

Contact details

Email: andrey@shestakovyachtsales.com

Web: shestakovyachtsales.com/en/

Telephones

USA: +1(954)274-4435

Office hours

Monday – Saturday: **9:00 - 21:00** EDT

Sunday: **closed**

Address



Harbour Towne Marina, 850 NE 3rd St,
STE 213, Dania, FL 33004