

PG'S JESTER — BROWARD



Судостроитель: BROWARD

Год постройки: 1995

Модель: Моторная яхта

Цена: **ЦЕНА ЯХТЫ ПО ЗАПРОСУ**

Местонахождение: United States

Длина общая: 118' 0" (35.97m)

Ширина: 24' 0" (7.32m)

Макс. осадка: 5' 8" (1.73m)

Крейс. скорость: 16 Kts. (18 MPH)

Макс. скорость: 20 Kts. (23 MPH)

Купить **PG's JESTER — BROWARD** а также выбрать подходящую вам яхту из нашего каталога яхт вам поможет опытный яхтенный брокер Андрей Шестаков. На сегодняшний день компания **Shestakov Yacht Sales Inc.** имеет большое количество яхт в собственном списке продаж, а также тесно сотрудничает со всеми крупными яхтенными производителями по всему миру.

Для того чтобы купить яхту **PG's JESTER — BROWARD** а также проконсультироваться по любому вопросу связанному с покупкой, продажей, чартером яхт позвоните по телефону **+7(918)465-66-44**.

ОГЛАВЛЕНИЕ

ОГЛАВЛЕНИЕ	2
ХАРАКТЕРИСТИКИ	3
Основная информация	3
Размеры	3
Скорость, вместимость и масса	3
Размещение	3
Корпус и палуба	3
Информация о двигателе	4
ПОДРОБНОЕ ОПИСАНИЕ	5
DIMENSIONS	5
MACHINERY	5
COMMUNICATION, NAVIGATION & ENTERTAINMENT	6
GALLEY & LAUNDRY EQUIPMENT	7
TENDERS & TOYS	7
DECK EQUIPMENT	7
SECURITY, FIRE FIGHTING & SAFETY EQUIPMENT	8
ACCOMMODATIONS	8
COMMENTS	10
Исключения	10
Отказ от ответственности	10
ФОТОГРАФИИ	11
КОНТАКТЫ	16
Контактная информация	16
Телефоны	16
Время работы	16
Адрес	16

ХАРАКТЕРИСТИКИ

Основная информация

Тип судна: Моторная яхта

Подкатегория: Raised Pilothouse

Модельный год: 1995

Год постройки: 1995

Год обновления: 2011

Страна: United States

Верх: Bimini Top

Открытая палуба мостика: Да

Размеры

Длина общая: 118' 0" (35.97m)

Ширина: 24' 0" (7.32m)

Макс. осадка: 5' 8" (1.73m)

Скорость, вместимость и масса

Крейс. скорость: 16 Kts. (18 MPH)

Макс. скорость: 20 Kts. (23 MPH)

Чистый вес: 198 Pounds

Вместимость воды: 1400 Gallons

Объем топливного бака: 7700 Gallons

Размещение

Всего кают: 4

Спальные места: 8

Каюта капитана: Да

Каюты экипажа: 4

Койки экипажа: 5

Корпус и палуба

Материал корпуса: Aluminum

Информация о двигателе

Двигатели: 2

Производитель: Detroit Diesel

Модель: 16V-92

Тип двигателя: Inboard

Тип топлива: Diesel

ПОДРОБНОЕ ОПИСАНИЕ

DIMENSIONS

General

Length Overall (L.O.A.):	118.00 feet	(36.00 meters)
Beam:	24.00 feet	(7.30 meters)
Draft:	5.67 feet	(1.73 meters)
Tonnage:	198 gross tons	

Capacities

Fuel Capacity:	7,700 US Gallons	(29,148 liters)
Water Capacity:	1,400 US Gallons	(5,300 liters)
Watermakers:	1,500 US Gallons p/day	

Speed

Maximum:	20.0 knots
Cruising:	16.0 knots

MACHINERY

Main Engines

Engine Type: (2) Detroit Diesel DDE 16V 92, @ 1,450 Hp each Port: 370 hours SMOH
/ Stbd: 988 hours SMOH

Gearboxes for Main
Engines: ZF

Drive: Propeller

Generators & Electricity

Output: 50KW @ 1,200 rpm / 120v / 240 v

Generators: (2) Northern Lights 50 Kw generators

Shore Power: Single phase 100 amp (2) 100 amp shore power cords A/Sea 50/60 hz Shore
Power Converter

Batteries: Engines: 24 volt DC (each) Genset: 12 volt 8D gel cell (each)
Emergency: Matervolt 12 vol charger

Air Conditioning:

Type: AquaAir 15 ton; 18,000 BTU

Other Machinery

Watermakers: 1,500 US Gallons p/day
Stabilizers: Naiad Multi Sea II

Bow Thruster: Naiad 50Hp
 Steering System: Vandervelden emergency steering system
 Fuel Separator & Filtration: Racor triple 1000 FC (2) Grundfos AC pumps
 Bilge Water Filtration: (6) Emergency 12v bilge pumps

COMMUNICATION, NAVIGATION & ENTERTAINMENT

Communication Systems

SSB: SEA Model 225
 VHF: Standard Horizon Standard Horizon w/SOS button Furuno VHF
 Telephone / Intercom: Panasonic Hybrid phone/intercom w/25 extensions

Navigation Systems

Radar: Furuno 2127 25kW Balckbox Furuno 1964BB Navnet Radar System
 Gyrocompass: Furuno SC110 GPS Satellite Compass Ritchie powerdamp (Flybridge)
 Magnetic Compass: Danfoth Constellation
 Auto Pilot: Simrad AP50
 Depth Sounder: B&G
 GPS: Furuno
 Weather FAX: Furuno
 Ships Computer: HP
 Chart Plotter: Nobeltec
 Wind/Speed Log: B&G wind speed B&G wind direction
 Navtex: Furuno NX500 receiver
 AIS : Furuno
 Other: Nobletec chart system

Entertainment System:

Salon: Custom entertainment center forward w/SONY LED 3D 60" TV w/surround sound system Millennia 30 Paradigm speakers Millennia sub woofer Onkyo Integra receiver SONY BlueRay Apple TV Direct TV HD HVD receiver Logitech RF touch screen remote

Master: Built-in SONY 40" LED TV SONY BlueRay Yamaha receiver w/surround sound Direct TV HD DVR receiver

Guest Staterooms: (2) SONY LED 40" TV (2) Apple TV (2) SONY BlueRay (2) Surround sound

Twin Guest / Office: Samsung TV Apple TV SONY BlueRay Surround sound stereo

Galley: Sharp flatscreen TV DVD & surround sound stereo
 SONY 14" TV (Captain's) DTV receiver (Captain's) DVD & stereo (Captain's) (2)
 Crew: SONY 12" TV (Crew) DTV receiver (Crew) (2) DVD & stereo (Crew)

Flybridge: SONY flatscreen 32" TV Surround sound stereo

Aft Deck: Samsung TV Fusion Stereo

GALLEY & LAUNDRY EQUIPMENT

Main Galley Equipment

Cooking Equipment: Thermador 6-burner stove top KitchenAid oven GE microwave

Refrigeration/Freezer: Commercial grade, full-size stainless steel refrigerator/freezer (2) U-Line refrigerators & (2) U-Line freezers

Dishwasher: Miele

Other: KitchenAid icemaker KitchenAid trashcompactor KitchenAid garbage disposal Frigidaire wine cooler

Additional Galley Equipment

Cooking Equipment: BBQ grill (Flybridge)

Refrigeration/Freezer: U-Line refrigerator (Master) Refrigerator (Flybridge)

Other: Icemaker (Flybridge)

Laundry Equipment:

Main Laundry (2) GE stackable washers & dryers (Lower Companion & Crew
 Equipment: Quarters)

TENDERS & TOYS

Tenders: 16' Novurania tender w/Yamaha 4-stroke 90 Hp O/B

Other: Sea Doo jet Ski (new 2012)

DECK EQUIPMENT

Anchor Windlass System: (2) Maxwell 4500 w/capstans
Aft Warping Capstans: (2) Maxwell
Anchors: (2) Poole Type
Anchor Chain: 250' ea. (approx.)
Boat Crane and Davits: Marquipt 1500lb low profile

SECURITY, FIRE FIGHTING & SAFETY EQUIPMENT

Security Equipment:

CCTV System: (4) CCTV surveillance cameras (fore & aft, port and stbd)
Monitor: (1) Felcom

Fire Fighting Equipment:

Fire Control System: Halon
Fire Extinguishers: (14) hand held fire extinguishers
Alarms: Throughout

Safety Equipment

Life Rafts: (2) Avon 8 person
Life Rings: (4)
EPIRBs: EPORB 406
Medical Equipment: 1st Aid/Medical Kit incl. Defibrillator & O2 kit

ACCOMMODATIONS

PG's JESTER, one of the few modern 24' beam Raised Pilothouse Motoryachts, was built at the peak of Broward Marine's production. In addition to the obvious extra interior volume provided by the significant increase in beam, she features full walk-around decks, aft engine room, accommodations for eight guests in four staterooms plus crew quarters for five. The main deck is an open arrangement plan with a tremendous feeling of light and space with numerous oversized windows and atrium effect in the salon. This yacht has benefited numerous upgrades over the past years to include complete paint job, 3' swim platform addition, new custom varnished teak cap rails, teak and holly overhead panels for aft deck, and in 2009, all electronics were updated. In 2010/11, she received a major refit with a complete Matterhorn white Awlgrip paint job, new interior with stained walnut joinery, new carpet, new soft goods throughout, new custom furnishings, new flat screen TV's and surround sound systems.

The main salon is entered via a large centerline door from the aft deck or from the port or starboard entry foyers amidships. This area offers a tremendous feeling of openness and light which is enhanced by numerous 2/3 full height windows throughout the salon. Her interior refit in

2011 included refinished stained walnut joinery, new custom furniture, new carpeting, new A/V equipment to include Sony 60" LED 3D TV, walk-up bar and electric wooden blinds.

Forward, the galley can be entered from either the port or starboard amidships entry foyers. Highlights include stainless steel appliances, a commercial grade fridge/freezer and large butcher block topped center island. Forward of the galley area, a large upholstered settee and dining table accommodates up to eight and doubles as the crew lounge/mess.

The full width master stateroom is below forward and entered through double doors with a King-size bed with custom spread and shams, rope lighting and storage below, upholstered headboard and custom grass cloth wallcovering, two Nightstands (movable), two Built-in 9-drawer oak dressers with marble insets, port and stbd. Details of custom walnut wooden blinds, custom suede overhead, radius doors finished in walnut stain. His and her master bath with granite vanity top, mirrored medicine cabinets, mirrored overhead, custom gold fixtures, make-up mirror, and full marble shower with glass doors and marble flooring

Two identical Queen Guest staterooms aft, port and starboard each with Queen-size beds with upholstered headboard, custom spread, shams and drawer storage below, two built-in dressers with 3 drawers, port and stbd. Details of Freeman portholes with draperies, custom overhead suede panels, radius doors finished in walnut stain. Private bath with corian vanity top, sink, mirrors, full size shower with glass door, custom gold fixtures and Freeman portlights

There is also a twin guest stateroom that can also be used as an office with a single lower berth and upper hinged pullman berth with spread, shams and drawer storage below, built-in desk with drawers, reading light. Details of Freeman porthole with draperies, custom suede overhead panels, cedar-lined hanging locker, radius doors with walnut stain trim. Private bath with corian vanity top, sink, mirrors, full size shower with glass door, custom gold fixtures, and Freeman porthole

Stairway from starboard entry foyer down to lower guest companionway with new carpet and walnut handrail, laundry center with GE full-size washer and dryer ('13) concealed behind door, and Art work displayed on long unobstructed companionway wall to port

Stairway from galley forward to crew quarters below with new carpeting.

Captain's cabin forward with tapered queen berth, private head with shower, hanging locker. Crew cabin with double berth, hanging locker, two crew heads with vanity and shared shower. A third cabin with upper and lower berths; Engineers or fourth cabin located in Lazarette with single berth, and separate head with shower

The pilothouse is accessed from the starboard foyer and up five steps is the pilothouse. The helm

area is modern and completely up-to-date with sophisticated navigation, communications and machinery monitoring equipment. An adjustable electric Stidd helm chair can also be moved side-to-side on tracks recessed in the teak and holly sole. This area features built-in settee lounge with seating to port and ample storage. Stairs lead to sliding flybridge hatch.

COMMENTS

PG's JESTER is a custom 118' x 24' wide beam Broward featuring a four stateroom layout plus four crew cabins, full walk-around decks and has had constant upgrades and improvements throughout the years. She had a 3' swim platform added, paint job and all navigational and electronics were replaced in 2008/09.

The vessel has benefited numerous upgrades over the past years to include complete paint job, 3' swim platform addition, new custom varnished teak cap rails, teak and holly overhead panels for aft deck, and in 2009, all electronics were updated. In 2010/11, she received a major refit with a complete Matterhorn white Awlgrip paint job, new interior with stained walnut joinery, new carpet, new soft goods throughout, new custom furnishings, new flat screen TV's, A/V equipment, DDEC engines overhauled, new A/C chillers, new oversized teak caprails, etc. In August 2013, her sea chest and windlass was completely rebuilt along with new GE washer and dryers added. PG's JESTER has been very well maintained and with her constant updates and upgrades over the years, makes this Broward one of the nicest on the market!

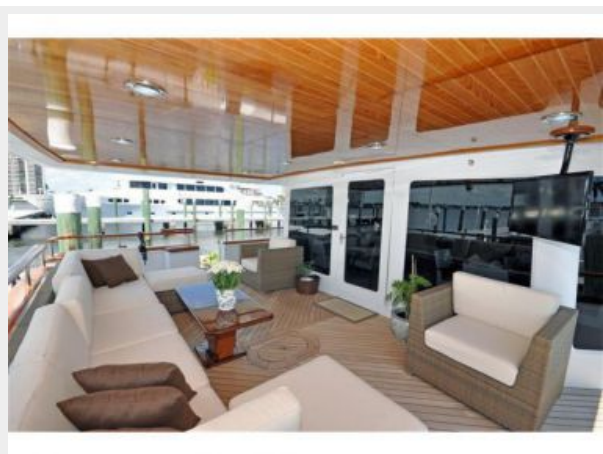
Исключения

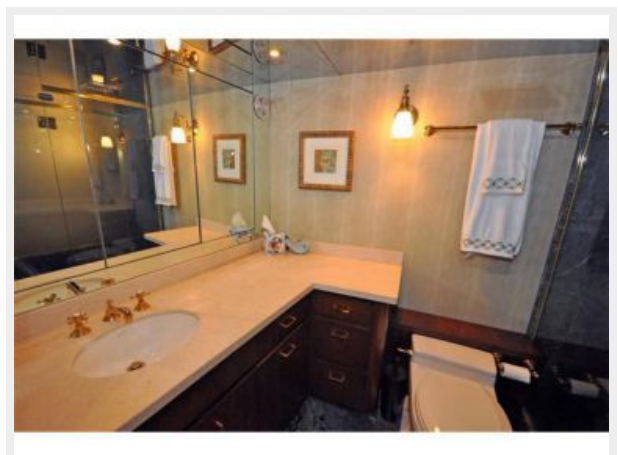
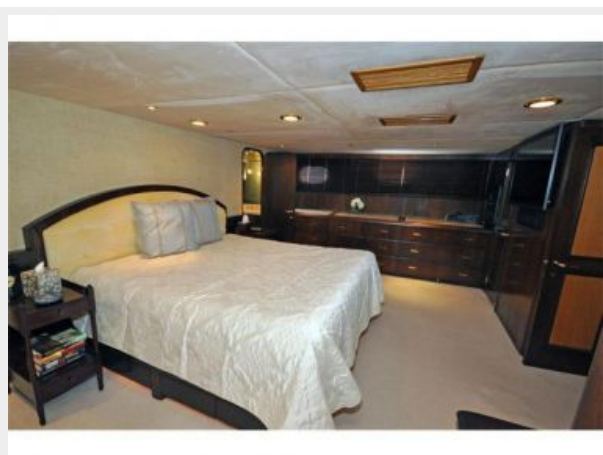
При продаже яхты исключаются личные вещи владельца.

Отказ от ответственности

Компания предоставляет описание судна или яхты добросовестно, но не может гарантировать точность этой информации, а также не ручается за техническое состояние. Покупатель должен проинструктировать своих агентов или оценщиков исследовать представленную информацию более подробно, по собственному желанию. Продажа судна или яхты, изменение цены или снятие с продажи будет происходить без предварительного уведомления.

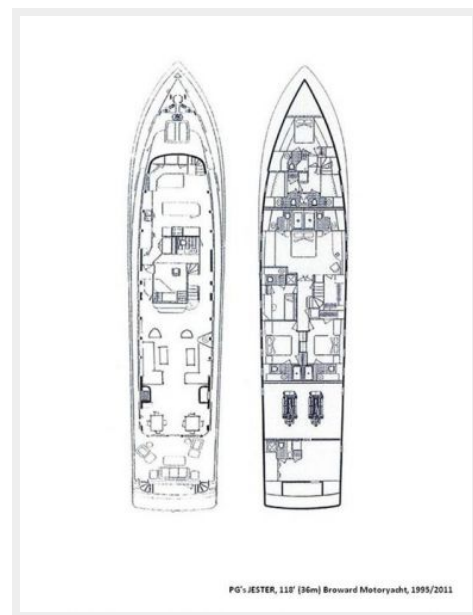
ФОТОГРАФИИ











КОНТАКТЫ

Андрей Шестаков (Andrey Shestakov) – ведущий яхтенный брокер отдела продаж яхт и судов компании Shestakov Yacht Sales Inc. Официальный представитель Shestakov Yacht Sales Inc. для русскоговорящих клиентов в центральном офисе компании в Майами/Форт Лодердейл/Флорида/США.

Контактная информация

Email: andrey@shestakovyachtsales.com

Web: shestakovyachtsales.com

Телефоны

Краснодарский край: **+7(918)465-66-44**

США, Майами, Флорида: **+1(954)274-4435**

Время работы

Понедельник – Суббота: **9:00 - 21:00**
EDT

Воскресенье: **Закрето**

Адрес



Harbour Towne Marina, 850 NE 3rd St,
STE 213, Dania, FL 33004