

THEMIS — TRINITY



Судостроитель: TRINITY

Год постройки: 1998

Модель: Моторная яхта

Цена: **ЦЕНА ЯХТЫ ПО ЗАПРОСУ**

Местонахождение: United States

Длина общая: 156' 0" (47.55m)

Ширина: 28' 0" (8.53m)

Мин. осадка: 0' 0" (0.00m)

Макс. осадка: 7' 0" (2.13m)

Крейс. скорость: 18 Kts. (21 MPH)

Макс. скорость: 21 Kts. (24 MPH)

Купить **THEMIS — TRINITY** а также выбрать подходящую вам яхту из нашего каталога яхт вам поможет опытный яхтенный брокер Андрей Шестаков. На сегодняшний день компания **Shestakov Yacht Sales Inc.** имеет большое количество яхт в собственном списке продаж, а также тесно сотрудничает со всеми крупными яхтенными производителями по всему миру.

Для того чтобы купить яхту **THEMIS — TRINITY** а также проконсультироваться по любому вопросу связанному с покупкой, продажей, чартером яхт позвоните по телефону **+7(918)465-66-44**.

ОГЛАВЛЕНИЕ

ОГЛАВЛЕНИЕ	2
ХАРАКТЕРИСТИКИ	5
Основная информация	5
Размеры	5
Скорость, вместимость и масса	5
Размещение	5
Корпус и палуба	6
Информация о двигателе	6
ПОДРОБНОЕ ОПИСАНИЕ	7
Accommodations	7
Main Salon	7
Dining Salon	7
Galley	8
Master Stateroom, On-Deck Forward	8
(2) VIP King Staterooms, Aft port & stbd	9
Queen Guest Stateroom, Forward Port	9
Twin Guest Stateroom, Forward Stbd	10
Crew Quarters, Below Forward	10
Pilothouse Equipment & Captain's Cabin	10
Electronics & Navigation Equipment	11
Skylounge	11
Upper Aft Deck	12
Flybridge Equipment & Tender	12
Flybridge Electronics	13
Aft Deck & Cockpit Equipment	13
Deck Equipment	13
Safety & Fire Protection	14
Electrical Equipment	14

Recent Updates, 2/2015	14
Engine Room & Mechanical Equipment	15
Comments	15
Исключения	15
Отказ от ответственности	16
ФОТОГРАФИИ	17
Main Salon, Aft	17
Main Salon, Forward	17
Main Salon	17
Main Salon Bar	17
Dining Salon	17
Dining Salon	17
Galley	18
Galley	18
Galley	18
Main Deck Foyer / Entry	18
Skyounge, Aft	18
Skyounge, Forward	18
Skyounge Bar	19
Skyounge	19
Pilothouse Helm	19
Pilothouse Settee	19
Master Stateroom, On-Deck	19
Master Stateroom, On-Deck	19
Master Stateroom	20
Master Stateroom	20
"His" Master Bath	20
"Her" Master Bath	20
"Her" Master Bath	20

Lower Deck Foyer	20
VIP King Guest Stateroom, Port	21
VIP King Stateroom	21
VIP King Guest Stateroom, Stbd	21
VIP Guest Bath	21
Twin Guest Stateroom, Port	21
Twin Guest Stateroom, Stbd	21
Captain's Cabin (Off Pilothouse)	22
Flybridge	22
Flybridge Deck	22
Flybridge Helm	22
Flybridge	22
Flybridge Jacuzzi	22
Upper Aft Deck	23
Lower Aft Deck	23
Lower Aft Deck	23
Cockpit	23
Forward Deck	23
Engine Room	23
Layout	24
Profile	24
КОНТАКТЫ	25
Контактная информация	25
Телефоны	25
Время работы	25
Адрес	25

ХАРАКТЕРИСТИКИ

Основная информация

Тип судна: Моторная яхта

Подкатегория: Tri-Deck

Модельный год: 1999

Год постройки: 1998

Страна: United States

Открытая палуба мостика: Да

Кубрик: Да

Размеры

Длина общая: 156' 0" (47.55m)

Ширина: 28' 0" (8.53m)

Мин. осадка: 0' 0" (0.00m)

Макс. осадка: 7' 0" (2.13m)

Скорость, вместимость и масса

Крейс. скорость: 18 Kts. (21 MPH)

Макс. скорость: 21 Kts. (24 MPH)

Водоизмещение: 473993.8633 Pounds

Чистый вес: 421 Pounds

Вместимость воды: 4200 Gallons

Объем топливного бака: 16676 Gallons

Размещение

Всего кают: 5

Спальные места: 10

Каюта капитана: Да

Каюты экипажа: 5

Спальных мест экипажа: 8

Корпус и палуба

Материал корпуса: Aluminum

Материал палубы: Teak

Комплектация корпуса: Semi-Displacement

Дизайнер экстерьера: Paragon Design / Trinity

Дизайнер интерьера: Dee Robinson

Информация о двигателе

Двигатели: 2

Производитель: Caterpillar

Модель: 3512B

Тип топлива: Diesel

ПОДРОБНОЕ ОПИСАНИЕ

Accommodations

The custom interior was done by Dee Robinson and features rich joinery throughout the vessel with a mixture of mahogany and African pear with burle inlays. The owner's stateroom is located on the main deck forward and is full beam with two walk-in closets forward of the King berth. There is a settee to port and two fully independent His and Her baths with shower and jacuzzi tub along. The guest accommodations consists of two King VIP staterooms and two twin staterooms, each with their own private bath with shower and jacuzzi tub. The crew quarters accommodates (8) to (9) in five upper/lower cabins forward, engineers cabin aft of the engine room and the captain's quarters is located on the pilothouse deck.

Main Salon

- Custom joinery in mahogany & African pear w/burle inlay throughout
- Custom upholstered L-shaped sofa
- Custom upholstered loveseat
- (3) Custom upholstered occasional chairs
- (3) Circular end tables w/table lamps
- Custom recessed overhead w/mirrors, cove molding & lighting
- Walk-up bar w/granite surfaces, Sub-Zero refrigerator, KitchenAid icemaker, sink w/gold plated fixtures & (4) upholstered bar stools, aft
- Built-in cabinets behind bar w/lofted storage for stemware & glasses
- Writing desk w/leather inlay & chair
- Built-in entertainment center forward w/bookshelves & storage housing; Samsung 40" flat screen TV, Sony Blue Ray DVD/CD, Direct TV receiver, Creston controller, Marantz receiver
- Large radius windows w/Hunter Douglas blinds & Roman cornices, port & stbd
- Floor-to-ceiling radius windows aft, port & stbd
- Recessed sliding doors w/glass panels to dining & galley, port & stbd
- Custom carpeting w/runner

Dining Salon

- Custom high gloss, flamed burle dining table w/compass rose inlay, seating for (10)
- (10) Upholstered dining chairs w/compass rose inlay - (2) with arms
- Mirrored panels on aft bulkhead
- Custom raised oval tray ceiling w/mirrors & lighting
- Custom built-in buffets w/Breccia marble top & lofted storage for china & silverware, port & stbd

- (2) U-line wine coolers, port & stbd
- Recessed sliding doors w/glass panels to main foyer, port & stbd Formal Entry / Main Foyer:
- Oversized, full width formal entry w/Breccia marble flooring w/custom inlay
- Watertight entry door, port & stbd Day Head:
- Custom Breccia marble vanity
- Custom sink & Kohler gold plated fixtures
- Custom Breccia marble flooring
- Mirrored panels on bulkhead & overhead

Galley

- Commercial style galley w/stainless steel appliances
- (2) Delfield stainless steel refrigerators & (2) freezers
- Viking 6-burner ceramic cook top
- (2) Miele ovens
- Wolf electric grill
- Deep fryer
- (2) Miele dishwashers
- Whirlpool microwave
- Sub-Zero icemaker
- Samsung drink fridge
- (2) GE trash compactors
- (2) Stainless steel double sinks
- Granite countertops
- (2) Large pantry's
- Stainless steel range vent fan
- Stainless steel bulkhead panels & backsplashes
- Large oval window w/Hunter Douglas blinds
- Custom overhead w/hard panels
- Access down to crew quarters

Master Stateroom, On-Deck Forward

- African pear joinery w/custom inlays throughout w/custom cabinetry & drawers
- King-size berth w/drawer storage below & crescent shaped headboard
- Custom spread, shams & throw pillows
- Mirrored aft bulkhead behind berth
- Overhead soffit w/recessed lighting
- (2) Built-in, 2-drawer nightstands w/marble top & table lamps
- Built-in 3-drawer dresser w/marble top
- Built-in vanity w/marble top, drawers & upholstered vanity stool, port

- Upholstered settee w/built-in end tables at each end, stbd
- Entertainment center in front of berth w/back-lit cabinets w/bookshelves, Samsung flat screen TV, Sony DVD/CD, Sony stereo, Direct TV, Marantz receiver & Yamaha stereo amplifier
- Built-in desk w/custom Braccia marble top, drawers, table lamp & chair, at entry of stateroom
- His & Her walk-in, cedar-lined closets w/dressing mirror on each door, port & stbd
- Gardall safe in cabinet aft
- (4) Large windows w/ Hunter Douglas pleated blinds
- Sub-Zero refrigerator in built-in cabinet His & Her Baths: Separate located aft, port & stbd:
- Her bath w/custom Breccia marble vanity w/inlay fossils, mirrored medicine cabinets, custom sink, large jacuzzi tub, Kohler gold plated fixtures, bidet, large mirror, (2) wall sconces, Breccia marble flooring & bulkheads
- His w/Breccia marble vanity w/inlay fossils, mirrored medicine cabinet, custom sink, marble shower w/seamless glass enclosure, Kohler gold plated fixtures, (2) wall sconces & Breccia marble flooring

(2) VIP King Staterooms, Aft port & stbd

- (2) VIP Staterooms located below, aft port & starboard, each with;
- King-size berths w/drawer storage below, custom spread, shams & throw pillows
- Upholstered headboards
- Overhead soffit w/recessed lighting
- (2) Built-in, 2-drawer nightstands w/marble top & table lamps
- Built-in, 3-drawer dressers w/marble top
- Built-in vanity w/marble top & upholstered bench seat
- Sliding shoji screen panels on forward bulkhead
- Entertainment center w/Sony Bravia TV, NAD DVD & stereo receiver
- Double door hanging lockers w/dressing mirror
- Private baths w/full shower & jacuzzi tub w/seamless glass enclosure, corian vanity w/dual sinks, mirrored medicine cabinets, custom Kohler fixtures, custom wallcovering, custom hard overhead panels & marble flooring

Queen Guest Stateroom, Forward Port

- Queen berth w/drawers below, custom spread & shams
- Custom upholstered headboard
- Mirrored forward bulkhead behind berth
- Overhead soffit w/recessed lighting
- Built-in, 2-drawer nightstand & table lamps
- Built-in, 3-drawer dresser
- Built-in writing desk & upholstered chair

- Entertainment center w/Samsung flat screen TV, NAD DVD & stereo
- Custom sliding Shoji screen panels
- Private bath w/full shower & jacuzzi tub w/seamless glass enclosure, corian vanity w/dual sinks, gold plated fixtures, mirrored medicine cabinet, custom wallcovering, (2) light sconces & marble flooring

Twin Guest Stateroom, Forward Stbd

- Twin berths w/drawers below, custom spread, shams & pillows
- Custom upholstered headboard
- Mirrored bulkhead behind berths
- Built-in, 2-drawer nightstand w/lamp
- Built-in, 3-drawer dresser
- Built-in writing desk & upholstered chair
- Custom sliding Shoji screen panels
- Entertainment center w/Samsung flatscreen TV & NAD DVD
- Private bath w/corian vanity, dual sinks, shower w/jacuzzi tub & seamless glass enclosure, custom Kohler fixtures, custom wallcovering & marble flooring
- Lower Deck Foyer:
 - Large foyer for guest staterooms w/custom marble flooring
 - Frigidaire stackable washer/dryer concealed in closet
 - Scottsman mini fridge concealed in cabinet
 - Custom overhead mirror & lighting
 - Custom molding & chair rail

Crew Quarters, Below Forward

- Oversized crew lounge w/bench seating & large corian table
- Frigidaire full size refrigerator/freezer
- Microwave/convection oven
- Samsung flat screen 37" TV
- Polaroid CCTV monitor
- VHF radio
- Engine room alarm trouble panel
- Freeman port lights w/storm covers
- (3) Crew cabins w/over & under berths, drawers, hanging locker, Samsung TV, private baths w/vanity & stall shower
- Separate laundry room w/ (2) sets of Maytag washers & dryers, sink & work station
- Ample storage space built-in below deck

Pilothouse Equipment & Captain's Cabin

- African pear wood joinery throughout helm station
- Large built-in leather settee w/foot rest
- (2) Helms chairs, port & stbd
- Large windows w/sun screens
- Built-in cabinetry, lockers & storage behind settee
- (2) Pantograph entry doors, port & stbd, to walk-around decks
- Teak flooring
- (2) Wing stations, port & stbd Captain's Cabin:
- Access to private captain's quarters, port
- Queen berth w/storage below
- Built-in writing desk, drawer storage & hanging locker
- Private bath w/vanity, mirror & stall shower

Electronics & Navigation Equipment

- (2) Furuno 96-mile color radars w/ARPA
- Furuno Navnet radar/chart plotter/fishfinder
- 1 KW transducer
- C Plath Navipilot V autopilot & gyro
- (2) Northstar 941 X GPS
- Trimble Inmar Sat/C GPS
- Nobletec chart plotter
- GRC Navtex receiver
- Naiad 505 stabilizer controls
- ABS bow thruster control
- B&G Hydra 20/20 CD display
- Seahail loud hailer
- (2) Samsung 14" flat screen monitors
- KVH Tracphone F55 Sat Com system
- Furuno 8500 VHF & S Phone
- Furuno S1562 SSB
- Ross DSC 500
- Furuno DSC60 watch receiver
- Pelco CCTV monitor w/ 5 cameras
- ACR searchlight controls

Skylounge

- Custom upholstered L-shaped sofa
- Wood/glass cocktail table
- (2) Upholstered swivel chairs
- (2) Upholstered occasional chairs w/ottomans

- Circular wood end table w/lamp
- Custom sofa table, aft
- Walk-up bar w/African pear inlay joinery, cove moldings, brass foot rest, granite countertop, U-line wine cooler, Sub-Zero refrigerator, Kitchen Aid icemaker (new 2014), trash compactor, custom pull-out drawers w/lofted storage for glasses & (4) high-back upholstered bar chairs
- Built-in entertainment center forward w/Sony Bravia 40" TV, Direct HDTV receiver, Sony DVD/CD, Marantz surround sound receiver & Yamaha amplifier
- Large windows, port & stbd, w/blinds & Roman cornices
- Custom recessed overhead w/mirror, cove moldings & lighting
- Custom headliner velcro panels
- Double glass doors to upper aft deck Upper Day Head:
- Teak flooring
- Granite vanity top
- Custom sink & Kohler fixtures
- Beveled mirrored bulkheads & wood wainscott
- Overhead mirror

Upper Aft Deck

- Full wrap-around seating w/cushions & covers
- (2) Oval hi-lo teak tables w/stainless base, port & stbd
- Outdoor woven chairs w/covers
- Sony TV mounted overhead
- Overhead hard panels w/ (12) recessed lights & (4) outdoor speakers
- Glass window panels wind deflectors, port & stbd
- Stairway w/teak steps up to flybridge
- Stairwell down to aft deck
- Eisenglass enclosure
- Teak decks

Flybridge Equipment & Tender

- Double bench helms seats, port & stbd
- Sliding hatch centerline w/stairwell to pilothouse
- Venturi windscreen
- Large step-up Jacuzzi centerline w/stainless steel hand rails, built-in bar & (2) bar stools, aft
- Built-in U-shaped settee w/large hi-lo table, stbd
- Built-in bench seat w/storage below, port
- (2) Teak sun chaise lounge chairs
- Wet bar w/sink, Manitowac icemaker & storage below
- Large door hatch built-into deck w/stairs down to aft deck

- (6) Outdoor stereo speakers
- (2) Given 10-man life rafts Flybridge Deck, Aft:
- Quantum 4200lb retractable crane
- Nautica 22' tender w/Yamaha 200HP O/B 2-stroke

Flybridge Electronics

- Helm station to port
- Navnet repeater (2013)
- Green Marine screen monitor
- Icom 506 VHF (10/14)
- Bow thruster control
- Naiad stabilizer control
- Mather single lever control
- Rudder angle indicator
- Dual ACR 100 searchlights

Aft Deck & Cockpit Equipment

- Built-in U-shaped bench seating w/cushions
- Custom oversized teak table w/sliding leaves
- (4) Outdoor woven chairs w/cushions
- Aft boarding gates, port & stbd
- Storage cabinets
- Hard overhead panels & recessed lighting
- Teak decks
- Stairwell up to flybridge w/teak steps
- Access door to stairway down to engine room
- (2) Maxwell 3500 capstans, stern
- Steps down to cockpit w/stainless steel hand rails Cockpit:
- Bar w/sink, U-Line refrigerator, icemaker & umbrella
- (4) Director chairs
- Brownies dive compressor
- Extended swim platform
- Transom door
- Teak decks
- Watertight door to control station, engineers cabin & engine room

Deck Equipment

- Dual Maxwell anchor windlass w/stainless steel recessed anchor pockets

- (2) 450' 3/4" chain anchor rode
- GMS folding passerelle
- (2) Marquipt sea stairs w/handrails
- Clear lucite wing doors from side walk-around deck to aft deck
- European walk-around decks
- Portuguese bridge w/teak decks
- European style centerline passage way to foredeck

Safety & Fire Protection

- Maritron security monitoring systems with door sensors located on all interior leading doors and hatches and deck sensors located on aft and side decks. Monitoring stations located in wheelhouse, crew mess and control room. Security camera system cover sides and stern boarding areas, engine room and swivel masthead. Camera monitors in pilothouse and crew quarters. Full GMDSS equipment.
- Maritron fire monitoring system with smoke and thermal sensors through the yacht. Monitoring stations located in wheelhouse, crew mess and control room. Kidde CO2 system pneumatically controlled, dual jet discharge nozzles with heat activated pneumatic sensors, plus (2) 5HP 208v AC fire pumps with dual 75' hose reels, one forward, one aft hand piped through the sea chest for optional operation. Portable fire extinguishers located throughout the yacht. (2) sets of fire fighting equipment with (2) Nelson SCBA's breathing apparatus.

Electrical Equipment

- Twin Caterpillar 99KW generators (Port: 10,893 Hrs / Stbd: 11,035 Hrs)
- 100 amp 3-phase
- 208/480v 3-phase
- Atlas shore power converter
- (2) 24v batteries for engine
- (2) 24v batteries for gens
- (3) Sentry battery chargers Control Room:
- Fully air conditioned
- Work bench w/vice
- Control station
- Engineers cabin w/twin berth & head w/stall shower

Recent Updates, 2/2015

- Complete new bottom job & paint - bottom survey available (2/15)
- New prop speed

- Naiad 505 stabilizers serviced
- New bilge line piping

Engine Room & Mechanical Equipment

- Twin Caterpillar 3512B, 2250 HP ea
- Cat Vision engine monitor
- Aqua Air A/C system, 30 tons, w/ 2 new Alpha chiller compressors w/soft starting controls (2014)
- (2) Filtration Concepts 2500 GPD watermakers
- Naiad 505 stabilizers w/22 sq ft fins (serviced 2/15)
- American 24" 60HP duo-prop electric bow thruster
- Kobelt hydraulic steering system w/dual manual backup
- Alfa Laval 103 centrifuge fuel separator/filtration
- New bilge line piping (2/15)
- Hamann waste treatment system
- Heli-Sep oil/water separator
- Maritron fire monitoring system w/smoke & thermal sensors
- Engine room blowers
- Engine room air condition
- Work bench & tool chest

Comments

Built in aluminum by Trinity Yachts, THEMIS was delivered in Oct.1998 but a 1999 model, and has been maintained to ABS and AMS class. A high-volume interior has been decorated by Dee Robinson and features mahogany and African pear wood joinery. The salon, formal dining and skylounge area are spacious and comfortable making for wonderful relaxation and dining areas. She accommodates (10) guests in five staterooms. These include an on-deck master suite with a king sized bed, two VIP staterooms with king size beds, Queen and twin staterooms below. All staterooms have private baths, showers and jacuzzi tubs. Extensive deck areas have plenty of room for outdoor activities and dining with two large aft decks and spacious flybridge with bar and six-person jacuzzi. Powered by twin Caterpillar 2250 HP main engines with low original hours and equipped with twin Caterpillar 99KW generators. Other features include full walk around decks, Naiad stabilizers, bow thruster, Atlas shore power converter and 22' Nautica tender. See a Virtual Tour of the THEMIS:
<http://vrtour.virtualsinc.com/company/robertjcury/1207>

Исключения

При продаже яхты исключаются личные вещи владельца.

Отказ от ответственности

Компания предоставляет описание судна или яхты добросовестно, но не может гарантировать точность этой информации, а также не ручается за техническое состояние. Покупатель должен проинструктировать своих агентов или оценщиков исследовать представленную информацию более подробно, по собственному желанию. Продажа судна или яхты, изменение цены или снятие с продажи будет происходить без предварительного уведомления.

ФОТОГРАФИИ

Main Salon, Aft



Main Salon, Forward



Main Salon



Main Salon Bar



Dining Salon



Dining Salon



Galley



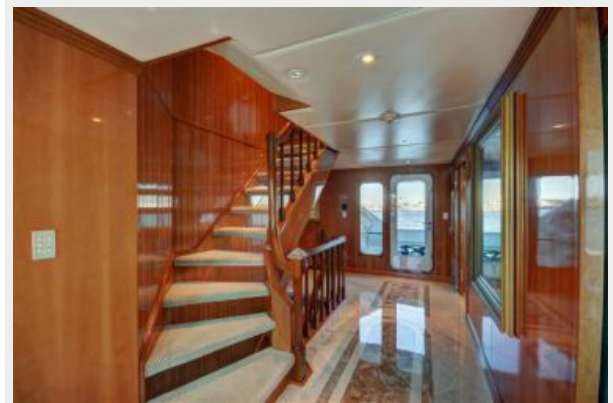
Galley



Galley



Main Deck Foyer / Entry



Skylounge, Aft



Skylounge, Forward



Skylounge Bar



Skylounge



Pilothouse Helm



Pilothouse Settee



Master Stateroom, On-Deck



Master Stateroom, On-Deck



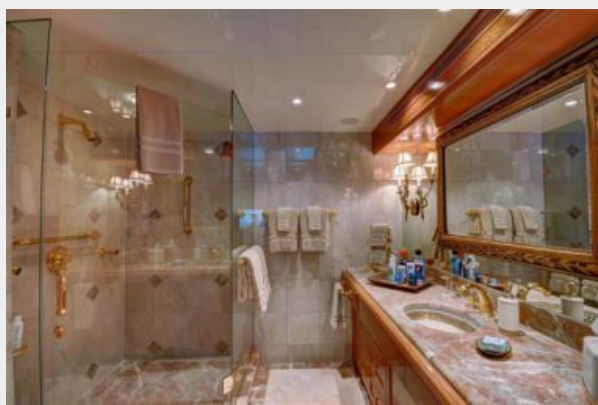
Master Stateroom



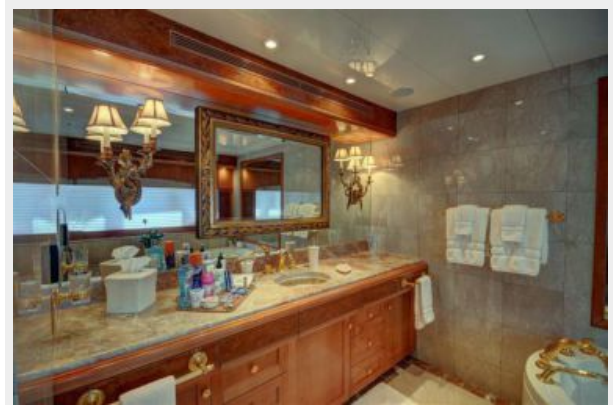
Master Stateroom



"His" Master Bath



"Her" Master Bath



"Her" Master Bath



Lower Deck Foyer



VIP King Guest Stateroom, Port



VIP King Stateroom



VIP King Guest Stateroom, Stbd



VIP Guest Bath



Twin Guest Stateroom, Port



Twin Guest Stateroom, Stbd



Captain's Cabin (Off Pilothouse)



Flybridge



Flybridge Deck



Flybridge Helm



Flybridge



Flybridge Jacuzzi



Upper Aft Deck



Lower Aft Deck



Lower Aft Deck



Cockpit



Engine Room



Forward Deck



Profile



Layout



КОНТАКТЫ

Андрей Шестаков (Andrey Shestakov) – ведущий яхтенный брокер отдела продаж яхт и судов компании Shestakov Yacht Sales Inc. Официальный представитель Shestakov Yacht Sales Inc. для русскоговорящих клиентов в центральном офисе компании в Майами/Форт Лодердейл/Флорида/США.

Контактная информация

Email: andrey@shestakovyachtsales.com

Web: shestakovyachtsales.com

Телефоны

Краснодарский край: **+7(918)465-66-44**

США, Майами, Флорида: **+1(954)274-4435**

Время работы

Понедельник – Суббота: **9:00 - 21:00**
EDT

Воскресенье: **Закрето**

Адрес



Harbour Towne Marina, 850 NE 3rd St,
STE 213, Dania, FL 33004