

## MOTIVATED — HATTERAS



**Builder:** HATTERAS

**LOA:** 60' 0" (18.29m)

**Year Built:** 2004

**Beam:** 17' 4" (5.28m)

**Model:** Sport Fisherman

**Max Draft:** 5' 1" (1.55m)

**Price:** PRICE ON APPLICATION

**Location:** United States

Our experienced yacht broker, Andrey Shestakov, will help you choose and buy a yacht that best suits your needs **Motivated — HATTERAS** from our catalogue. Presently, at Shestakov Yacht Sales Inc., we have a wide variety of yachts available on our sale's list. We also work in close contact with all the big yacht manufacturers from all over the world.

If you would like to buy a yacht **Motivated — HATTERAS** or would like help answering any questions concerning purchasing, selling or chartering a yacht, please call **+1(954)274-4435**

# TABLE OF CONTENTS

TABLE OF CONTENTS	2
SPECIFICATIONS	4
Overview	4
Basic Information	4
Dimensions	4
Speed, Capacities and Weight	4
Accommodations	4
Hull and Deck Information	5
Engine Information	5
DETAILED INFORMATION	6
Broker Remarks	6
Salon	6
Galley	7
Master Stateroom & Head (Port)	7
VIP Stateroom (Forward)	8
Guest Stateroom	9
Guest/Day Head	9
Flybridge	9
Electronics	10
Tower Includes	10
Cockpit	11
Engine Room/Equipment	11
Exclusions	12
Exclusions	12
Disclaimer	12
PHOTOS	13
CONTACTS	21
Contact details	21

Telephones	21
Office hours	21
Address	21

# SPECIFICATIONS

---

## Overview

---

60 Hatteras 2004 started out life as one of the famed **HATTERASCAL** fleet. After Hatteras campaigned her in a couple tournaments and boat shows in 2004, the previous owner took over. Having been outfitted and commissioned as a “show boat” her custom features, inventor and décor is 2<sup>nd</sup> to none. Vessel has cruised and fished the Atlantic, including the Bahamas & Caribbean Islands. She has always been Captain maintained with an open check book.

## Basic Information

---

**Category:** Sport Fisherman

**Sub Category:** Convertible

**Model Year:** 2004

**Year Built:** 2004

**Country:** United States

## Dimensions

---

**LOA:** 60' 0" (18.29m)

**Beam:** 17' 4" (5.28m)

**Max Draft:** 5' 1" (1.55m)

## Speed, Capacities and Weight

---

**Water Capacity:** 200 Gallons

**Holding Tank:** 100 Gallons

**Fuel Capacity:** 1747 Gallons

## Accommodations

---

**Total Cabins:** 3

**Total Heads:** 3

---

## Hull and Deck Information

---

**Hull Material:** Fiberglass

---

## Engine Information

---

**Engines:** 2

**Manufacturer:** Caterpillar

**Model:** C-32

---

## DETAILED INFORMATION

---

### Broker Remarks

---

This 60 Hatteras 2004 started out life as one of the famed **HATTERASCAL** fleet. After Hatteras campaigned her in a couple tournaments and boat shows in 2004. Having been outfitted and commissioned as a "show boat" her custom features, interior and decor is 2<sup>nd</sup> to none. Yacht has cruised and fished the Atlantic, including the Bahamas & Caribbean Islands. She has always been Captain maintained with an open check book. - **Engines serviced recently and has updated aftercoolers**

### Salon

---

Built with a high gloss cherry wood. Hatteras' comfortable L-shaped sofa, is located to the port side with rod storage easily accessed underneath. Built into the starboard side a 46 " TV ( 2015). For comfort linear valences distribute cooled air evenly throughout the salon and galley through wood valences, eliminating hot and cold spots associated with overhead vents.

- L- shaped ultra-leather sofa to port with storage underneath ( recovered 2015)
- Custom cocktail table with bottle storage below
- 46" flat screen TV with Tracvision satellite
- Denon sound system with AM/FM/DVD/CD and IPOD connection (2015)
- Bose surround sound
- Scotsman ice maker
- Recessed lighting with dimmers Custom Wooden Blinds Upholstered headliner
- Cherry wood bulkheads
- Wood valances
- Fixed frameless windows with safety glass
- AC and DC light fixtures
- AC dimmable lights
- Air handler for salon replaced in 2012. A/C pumps replaced in 2012

---

## Galley

---

The galley encompasses an L-shaped design, with ample storage. The under counter refrigerator/freezer allows for a low profile arrangement that joins the salon and galley as one. The galley is fully equipped with four burner cooktop, trash compactor, microwave convection oven and deep drawer storage in the galley fascia.

- Large drawers that pull out for easy access.
- Subzero under counter drawer refrigerator and freezer, 2 drawers each. Solid surface countertops and under mount sink
- Whirlpool 4-burner cooktop w/smooth surface
- Whirlpool trash compactor
- Sharp Microwave/ convection oven large storage area forward of galley
- Dinette to Starboard, with storage underneath (recovered 2015)
- Lots of storage below sink and cooktop
- Amtico flooring
- Cooktop new in 2012
- SubZero refrigerator drawers - new compressors in 2012

---

## Master Stateroom & Head (Port)

---

The master stateroom quite accommodating with a queen size walk around bed positioned athwartship against the hull side. The stateroom has considerable storage to include a cedar lined space, hinged underneath the queen berth. Across the back bulkhead are two cedar lined lockers and forward you'll find two separate drawer banks with nightstands on either side.

- Walk around queen berth ( new mattress 2015) with cedar lined storage below.

### Upholstered Headboards

- Twin cedar lined lockers
- Carpeting
- Padded bulkheads
- Fluted wood valance with a/c
- Nightstands

- Dresser with drawers
- AC and DC lights, with dimmable lights
- 31" flat screen TV with DVD player (2015)
- Custom bed linens
- Full length mirror
- Ensuite head with Stall shower, hard surface counter tops, head hunter toilet and mirrored ceilings
- Amtico flooring in head
- Storage below sink

## VIP Stateroom (Forward)

---

The bow stateroom provides for a walk around queen berth with hinged access to cedar lined storage. On either side of the berth are cedar lined lockers and access to a private ensuite head.

- Carpeting
- Padded bulkheads
- AC and DC lights with dimmable lighting
- Walk around Queen Bed ( new mattress 2015) with storage underneath
- 31" flat screen TV (2015)
- Twin Cedar lined Hanging lockers
- Upper hull side storage cabinets
- Cabinets and nightstands on either side of berth
- Hatch to bow.
- Private access to ensuite head
- Head hunter toilet
- Stall shower.
- Mirrored ceilings in head
- Storage under sink



---

## Guest Stateroom

---

Just down the companionway and to the starboard side you will find the third stateroom, with upper and lower berths, a full size cedar lined hanging locker and access to the day head.

- Carpeting
- AC and DC lighting
- Padded wall covering
- Single upper and lower Berths
- Storage under lower berth
- Full sized cedar hanging locker
- Access to head
- Custom bed linens

---

## Guest/Day Head

---

All of the heads provide for optional mirrored ceiling and freshwater Head Hunter toilet system with showers and good storage.

- Amtico flooring Head hunter toilet Stall shower
- Hatch to bow deck
- Access to Companionway and guest stateroom
- Storage under sink
- Stack washer/dryer located just forward of door to companionway

---

## Flybridge

---

On the flybridge, a full array of electronics is concealed nicely in the peninsula, actuated console. Just forward of the console is additional seating and ample rod storage. To starboard is an additional seat with more rod storage. Twin teak helm chairs sit behind the console. Upgrades include freshwater washdown, teak helm pod, Mya Epoch electric teaser reels and misters.

- Systems monitor

- L-shaped bench forward of console with storage
- Starboard bench seat with storage
- Pop-up electronics console
- 3-sided enclosure with Hard top and Tuna Tower (2015)
- Teak helm pod with single lever controls
- Fresh water washdown
- Insulated drink box
- Large storage under the forward brow
- Mya Epoch electric teaser reels
- 2 misters for bridge area Twin teak helm chairs Power steering

## Electronics

---

- 2 - Garmin 7215
- Northstar 952 chart plotter
- Furuno Navnet radar and chart plotter
- Northstar 1202 monitor, engine video, depth and plotter
- XM sirus weather
- KVH tacevision Satellite for TV, Phone and Fax
- Remote spotlight
- 2-Icom VHF Radios Simrad IS 15 depth Simrad AP-22 Autopilot
- Fusion stereo system

## Tower Includes

---

- Northstar 6000i depth sounder and chart plotter
- Simrad auto pilot remote Simrad Is 15 repeater Icom VHF
- Fresh water washdown

---

## Cockpit

---

The “Hattitude” is fish rigged, providing for twin in deck fish boxes, refrigerated drink box, freezer, Eskimo ice maker, and

full teak package.

- Release Fighting chair w/rocket launcher and offset stantion
- Tackle Drawers
- (2) in-deck fish boxes with macerator
- Fresh and Saltwater washdowns and dockside disconnects ( rebuilt 2017)
- Refrigerated drink box under top step into salon
- Large freezer
- Eskimo 600# per day ice maker is plumbed to starboard raised box on aft bulkhead ( rebuilt 2017)
- Teak cockpit sole (2015) and covering boards with rolled coaming
- Transom Livewell ( rebuilt 2017)
- Sony stereo with 4 speakers Mister system w/7 heads Transom door

---

## Engine Room/Equipment

---

- CAT C-32's (1650hp) engines just serviced and updated aftercoolers
- CAT 21.5kw generator
- Oil change system
- Brownies third lung dive compressor system
- Cruisair A/C system with 4 units
- FCI Max-Q 1800 GPD water maker, membranes less than a year old
- Engine Room Gauge System Fire boy extinguisher system Eskimo Ice Machine
- (2) 50amp shore power cords
- Tool Box

- New A/C pumps 2012
- Eskimo ice machine rebuilt in 2017
- Watermaker rebuilt 2017 - New exhaust riser & blankets (2015) - New raw water pump (2015)

## Exclusions

---

- Owner's personal items are excluded from this sale

## Exclusions

---

Owner's personal belongings.

## Disclaimer

---

The Company offers the details of this vessel or yacht in good faith but cannot guarantee or warrant the accuracy of this information nor warrant the condition of the vessel. A buyer should instruct his representatives, agents, or his surveyors, to investigate such details as the buyer desires validated. This vessel or yacht is offered subject to prior sale, price change, or withdrawal without notice.

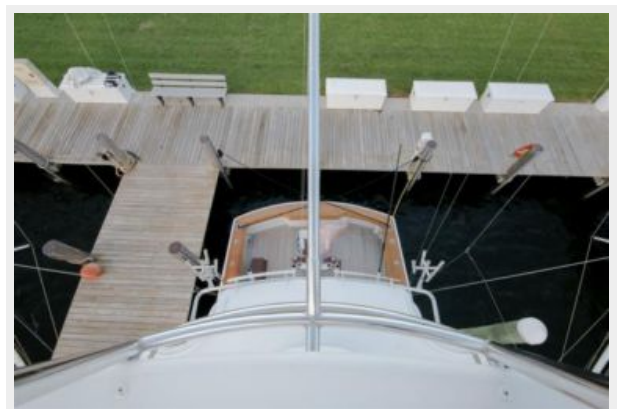
# PHOTOS





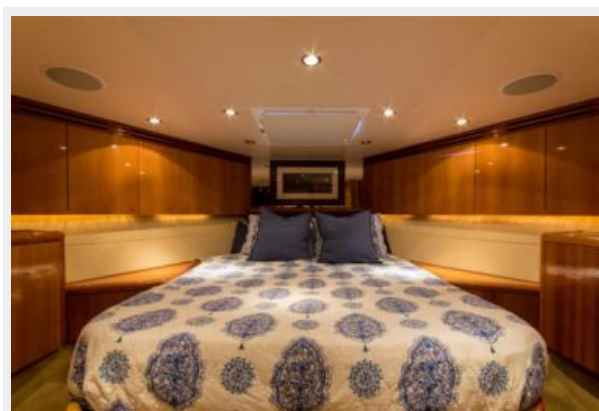


















# CONTACTS

---

Andrey Shestakov, leading yacht broker of the sales department of Shestakov Yacht Sales Inc. Shestakov Yacht Sales Inc., the official representative of the Miami/Fort Lauderdale FL headquarters.

## Contact details

---

Email: **andrey@shestakovyachtsales.com**

Web: [shestakovyachtsales.com/en/](http://shestakovyachtsales.com/en/)

## Telephones

---

USA: **+1(954)274-4435**

## Office hours

---

Monday – Saturday: **9:00 - 21:00 EDT**

Sunday: **closed**

## Address

---



Harbour Towne Marina, 850 NE 3rd St,  
STE 213, Dania, FL 33004