

41FT 2000 TIARA 4100 OPEN — TIARA



Builder: TIARA

Year Built: 2000

Model: Cruiser

Price: PRICE ON APPLICATION

Location: United States

LOA: 41' 0" (12.50m)

Min Draft: 4' 0" (1.22m)

Max Draft: 14' 8" (4.47m)

Our experienced yacht broker, Andrey Shestakov, will help you choose and buy a yacht that best suits your needs 41ft 2000 Tiara 4100 Open — TIARA from our catalogue. Presently, at Shestakov Yacht Sales Inc., we have a wide variety of yachts available on our sale's list. We also work in close contact with all the big yacht manufacturers from all over the world.

If you would like to buy a yacht 41ft 2000 Tiara 4100 Open — TIARA or would like help answering any questions concerning purchasing, selling or chartering a yacht, please call +1(954)274-4435

TABLE OF CONTENTS

TABLE OF CONTENTS	2
SPECIFICATIONS	4
Basic Information	4
Dimensions	4
Speed, Capacities and Weight	4
Accommodations	4
Hull and Deck Information	4
Engine Information	5
DETAILED INFORMATION	6
Overall vessel description	6
Cabin	6
Electrical systems	6
Fishing equipment	6
Noted updates and options	6
Exclusions	7
Disclaimer	7
PHOTOS	8
Profile	8
Cockpit	8
Fore deck	8
Helm Seat	8
Helm	8
Helm	8
Helm	9
Bench Seat	9
Salon settee	9
Salon	9
Galley/salon	9

Master stateroom	9
Head	10
Head	10
engine room	10
engine room	10
Cable master	10
engine room	10
Stereo	11
Layout overview	11
CONTACTS	12
Contact details	12
Telephones	12
Office hours	12
Address	12

SPECIFICATIONS

Basic Information

Category: Cruiser

Sub Category: Express

Model Year: 2000

Year Built: 2000

Country: United States

Dimensions

LOA: 41' 0" (12.50m)

LWL: 35' 0" (10.67m)

LOD: 43' 6" (13.26m)

Min Draft: 4' 0" (1.22m)

Max Draft: 14' 8" (4.47m)

MFG Length: 43' 6" (13.26m)

Speed, Capacities and Weight

Displacement: 27500 Pounds

Water Capacity: 130 Gallons

Holding Tank: 50 Gallons

Fuel Capacity: 524 Gallons

Accommodations

Total Heads: 1

Hull and Deck Information

Hull Material: Fiberglass

Engine Information

Engines: 2

Manufacturer: Caterpillar

Model: 3208 DITA

Engine Type: Inboard

Fuel Type: Diesel

DETAILED INFORMATION

Overall vessel description

For both the cruising and fishing enthusiast, this LOW HOUR 4100 offers plenty of cockpit area for relaxing and fishing. The cockpit is huge - 168 square feet, with seating that includes an oversized helm seat, companion L-lounge, portside aft-facing lounge seat (lifts for walk-in engine room entry). Optional bait prep center (walk-in engine room entry). Below deck is a spacious retreat with lounge (convertible to dinette or double berth), full galley and exceptional storage space. The owner's stateroom has a queen-sized pedestal bed, his/hers cedar-lined hanging lockers, and Flatscreen SAT TV with remote. The completely private starboard head is oversized, with access from both the salon or the owner's stateroom.

Cabin

The cabin features a queen sized pedestal berth forward with a lot of storage below. The owner's stateroom also has two hanging lockers, hullside shelves, a solid cabin door, and access to the head. The full fiberglass head provides plenty of room, and features a molded marble countertop with integrated sink and storage below. There is an upper linen storage locker with pull-out storage basket, mirrored vanity above the sink, separate shower stall with bi-fold glass door, integrated seat and shower sump pump, and full frame wood doors. The dinette is convertible to a large double berth and a pullman-style berth. The galley has Corian countertops, S.S. double sink with cover, two burner electric cooktop, built-in coffee maker, microwave convection oven, **NEW** upright refrigerator and freezer, and tons of storage.

Electrical systems

The electrical system on the 4100 Open features a custom 12V and 120V master distribution panel. One 240V 50 amp 65' shore power cord with adapter, an optional Glendinning cable recoiler. Also included is a 120V 30 amp 65' shore cord, and a two bank 12V battery system with gel cell batteries, battery charger, galvanic isolators, battery voltage meter, reverse polarity indicators, and generator (**under 200 hrs**).

Fishing equipment

Full Tuna Tower, Rupp outriggers with center rigger, 130 lbs class Fighting Chair, teaser reel's, hideaway aft bench seat, live well, below deck fish box, new full cockpit combing pads, rod holders, tackle drawers, custom rod holders in ceiling of main cabin and much more.

Noted updates and options

- New eisenglass enclosure
- New refrigerator/ freezer
- 2 new A/C units
- Recovered helm seat, bolsters, and exterior L-shaped bench seating
- Power Helm Seat
- Custom rod storage in salon
- KVH SAT TV
- New in 2012-Garmin GPS Chartplotter with 4kw Radar, 1kw fish sounder, two Garmin cameras, and XM weather antenna
- Anchor windlass

Exclusions

Owner's personal belongings.

Disclaimer

The Company offers the details of this vessel or yacht in good faith but cannot guarantee or warrant the accuracy of this information nor warrant the condition of the vessel. A buyer should instruct his representatives, agents, or his surveyors, to investigate such details as the buyer desires validated. This vessel or yacht is offered subject to prior sale, price change, or withdrawal without notice.

PHOTOS

Profile



Cockpit



Fore deck



Helm Seat



Helm



Helm



Helm



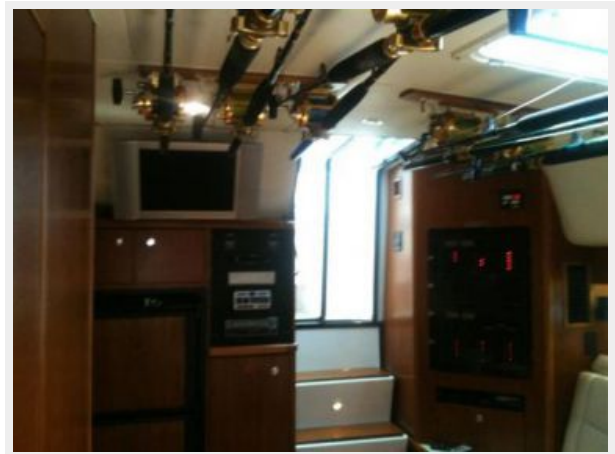
Bench Seat



Salon settee



Salon



Galley/salon



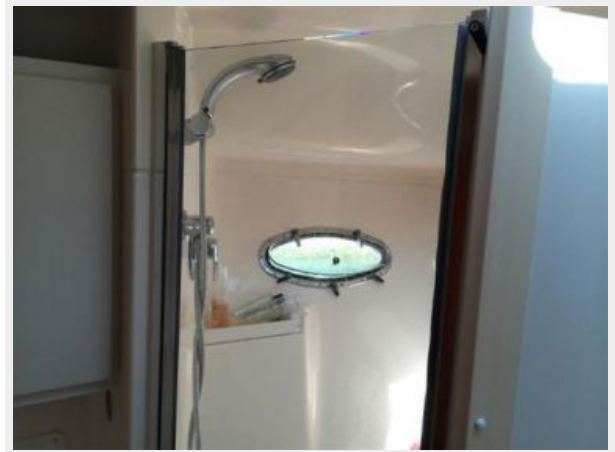
Master stateroom



Head



Head



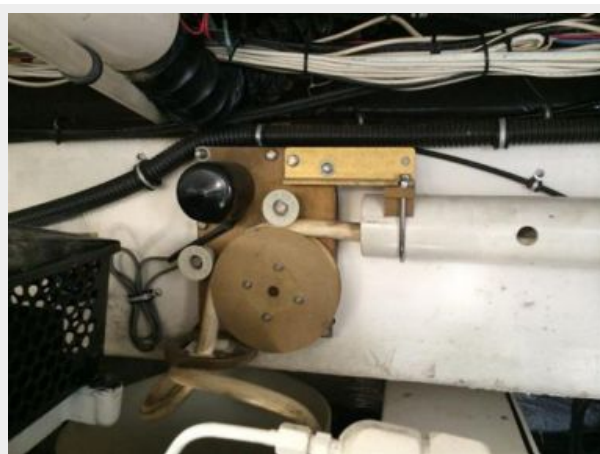
engine room



engine room



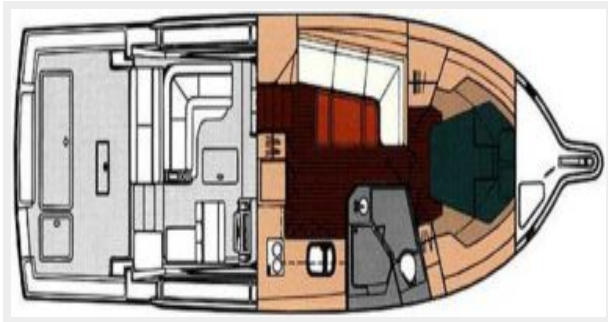
Cable master



engine room



Layout overview



Stereo



CONTACTS

Andrey Shestakov, leading yacht broker of the sales department of Shestakov Yacht Sales Inc. Shestakov Yacht Sales Inc., the official representative of the Miami/Fort Lauderdale FL headquarters.

Contact details

Email: andrey@shestakovyachtsales.com

Web: shestakovyachtsales.com/en/

Telephones

USA: +1(954)274-4435

Office hours

Monday – Saturday: **9:00 - 21:00** EDT

Sunday: **closed**

Address



Harbour Towne Marina, 850 NE 3rd St,
STE 213, Dania, FL 33004