

42FT 1987 BLUEWATER PLATINUM — BLUEWATER



Builder: [BLUEWATER](#)

Year Built: 1987

Model: Trawler

Price: PRICE ON APPLICATION

Location: United States

LOA: 42' 0" (12.80m)

Beam: 14' 1" (4.29m)

Max Draft: 3' 6" (1.07m)

Our experienced yacht broker, Andrey Shestakov, will help you choose and buy a yacht that best suits your needs 42ft 1987 Bluewater Platinum — BLUEWATER from our catalogue. Presently, at Shestakov Yacht Sales Inc., we have a wide variety of yachts available on our sale's list. We also work in close contact with all the big yacht manufacturers from all over the world.

If you would like to buy a yacht 42ft 1987 Bluewater Platinum — BLUEWATER or would like help answering any questions concerning purchasing, selling or chartering a yacht, please call **+1(954)274-4435**

TABLE OF CONTENTS

TABLE OF CONTENTS	2
SPECIFICATIONS	3
Basic Information	3
Dimensions	3
Speed, Capacities and Weight	3
Accommodations	3
Hull and Deck Information	3
Engine Information	3
DETAILED INFORMATION	4
MORE	4
Exclusions	6
Disclaimer	6
PHOTOS	7
CONTACTS	19
Contact details	19
Telephones	19
Office hours	19
Address	19

SPECIFICATIONS

Basic Information

Category: Trawler

Model Year: 1987

Year Built: 1987

Country: United States

Dimensions

LOA: 42' 0" (12.80m)

Beam: 14' 1" (4.29m)

Max Draft: 3' 6" (1.07m)

Speed, Capacities and Weight

Displacement: 30000 Pounds

Water Capacity: 200 Gallons

Fuel Capacity: 400 Gallons

Accommodations

Total Cabins: 2

Total Heads: 2

Hull and Deck Information

Hull Material: Fiberglass

Engine Information

Engines: 2

Manufacturer: Ford Lehman

Model: 135 Super

Engine Type: Inboard

Fuel Type: Diesel

DETAILED INFORMATION

MORE

PROPULSION

- Transmission - Borg Warner, Velvet Drive. 2.5:1 reduction
- Propellers - Two 4-blade, bronze 26" diameter, 20" pitch
- Propeller shaft - 1-3/4" stainless steel
- Spare Propellers - Two spares onboard

STEERING

- Single station, upper helm, Capillano hydraulic, non-pressurized

TRIM TABS - Hydraulic

ELECTRICAL

- Generator - 1987 Westerbeke, 8 Kw. 2377 hours
- Batteries, Starting/Generator - Two wet cell, 8D, 12 volt each (1) port engine start. (1) starboard engine and generator
- Batteries, House - Six wet cell, 105 AH at 6 volts each
- Battery Charger - New-Mare 12 volt, 50 amps
- Battery Charger, Portable - Schumacher, model XC75, 75 amps
- Shore line connection - Two 120vac/30 amp - twist lock
- Inverter - Coleman Power Mate, 2000 watt continuous, 4000 peak. Model PMP2000
- GFCI 120 volt AC receptacles in "wet" locations
- Galvanic Isolator

BILGES

- Forward (galley) - Rule 500 GPH
- Engine compartment - Rule 2000 GPH
- Aft - Rule 1100 GPH
- Additional - Two portable, 120v, sump pumps
- Hand operated bilge pump
- High water alarm - in engine compartment. Sound and light alarm

SAFETY

- PFD's - Adult; 17 Type II, 7 Type III. Child; 1 Type II
- Throwable - 2 Type IV ring bouys with 60' safety life-line
- EPIRB - 406
- Medical Kit
- Flares

- Fire extinguishers - Three dry chemical B1 (BC). One dry chemical B1 (ABC)
- Engine compartment fire extinguisher - Fireboy type 70HV, automatic only, Halon 1301
- Carbon monoxide monitor - Xintex CO monitor
- Smoke alarms - One in galley. One in salon.
- Depth Sounder and GPS anchor drag alarm in master suite

ELECTRONIC AND NAVIGATIONAL

- VHF - ICOM Class B, MA-500TR, AIS
- VHF - Uniden Oceanus DSC
- VHF - Uniden Atlantics hand-held
- Radar - JRC 2000
- Autopilot - Raytheon ST5000
- Depth Sounder - Hummingbird 561
- Depth Sounder - Interphase Probe - forward looking
- GPS - Furuno WASS Navigator GP-32
- GPS/Chart Plotter - Lowrance Gen Touch II HDS 7
- Speed - Datamarine

GALLEY

- Stove/Oven - Princess 3 burner stove with oven. Electric
- Microwave - Sharp Crousel
- Refrigeration - Danby Turbo Air electric with top freezer
- Refrigeration - Aft sundec 1/4 size, 120v refrigerator
- Freezer - Forward berth, small 120v
- Washer/Dryer - Splendide Comb-o-matic

HEAD

- Toilet - Forward; Jabsco electric macerating, Aft; Jabsco electric Quiet macerating
- Shower - Forward; hand, Aft; seperate stall with seat
- Holding tanks - One 25 gallon. One 40 gallon. Discharge; Combination; Deck fill pump out, Y valve direct overboard, macerator pump out
- Shower sump pumps - Attwood 500 GPH

AIR CONDITIONING/HEATING

- Mermaid reverse cycle. One forward, One Aft. 16,000 BTU each

DECK

- Hard bimini top
- Complete enclosure aft sun room and fly bridge
- Dinghy - Danard 10' RIB
- Dinghy Outboard - 1983 Johnson, 4.3 hp
- Lines, fenders

- Deck work lights; port, starboard and stern
- Full sun shade covers forward, port and starboard
- Insulated curtains in sun room
- Sun room bimini shade aft

GROUND TACKLE

- Anchor #1 - Fluke, 40 lbs on bow roller. 120' of 3/8 chain plus 200' of 3/4", 3 strand nylon line
- Anchor #2 - Delta, 35 lbs on bow roller. 10' of 3/8 chain plus 200' 3/4", 3 strand nylon line
- Anchor #3 - Fluke, 15 lbs on transom. 150' of 3/8, 3 strand nylon line
- Windlass - Maxwell
- Washdown pump

ENTERTAINMENT

- TV Salon; RCA 40"
- TV Aft; Polaro 16"
- TV Sun Room; Vizio 22"
- Stereo System - Sony CD/AM/FM radio
- DVR - Insignia

OTHER CONVEYANCE

- All decor, window treatments, coolers, furniture, bedding, linen, spare filters, impellers, etc., all other equipment to do with the boat convey with boat.
- Personal items, cookware, dishes, glasses, silverware, charts, chart books, tools do not convey.

Exclusions

Owner's personal belongings.

Disclaimer

The Company offers the details of this vessel or yacht in good faith but cannot guarantee or warrant the accuracy of this information nor warrant the condition of the vessel. A buyer should instruct his representatives, agents, or his surveyors, to investigate such details as the buyer desires validated. This vessel or yacht is offered subject to prior sale, price change, or withdrawal without notice.

PHOTOS







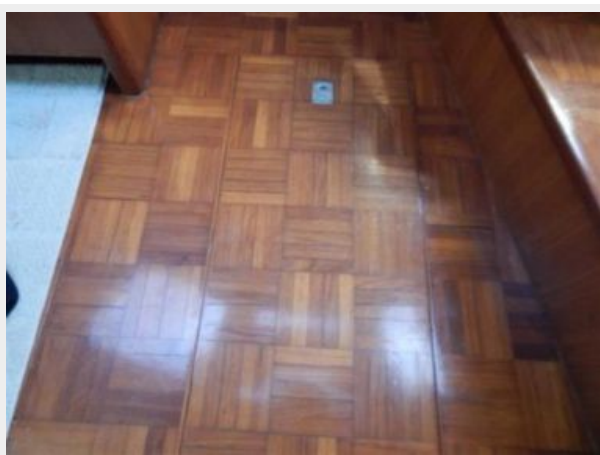
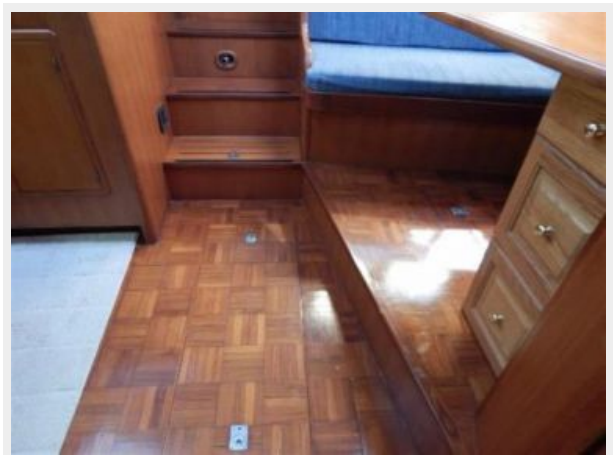




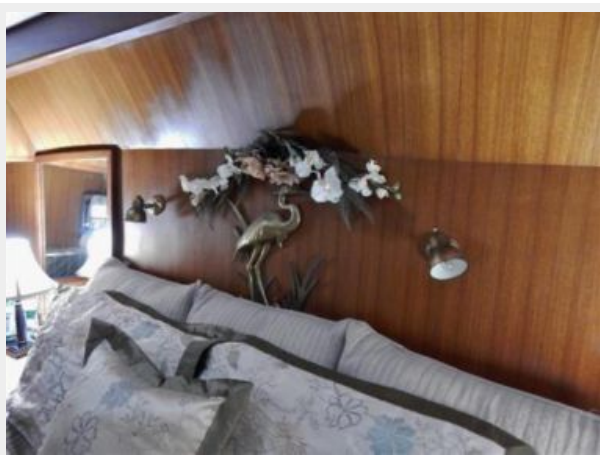


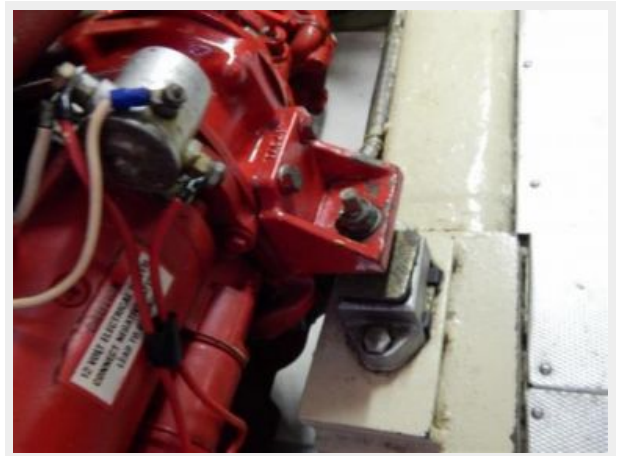












CONTACTS

Andrey Shestakov, leading yacht broker of the sales department of Shestakov Yacht Sales Inc. Shestakov Yacht Sales Inc., the official representative of the Miami/Fort Lauderdale FL headquarters.

Contact details

Email: andrey@shestakovyachtsales.com

Web: shestakovyachtsales.com/en/

Telephones

USA: +1(954)274-4435

Office hours

Monday – Saturday: **9:00 - 21:00** EDT

Sunday: **closed**

Address



Harbour Towne Marina, 850 NE 3rd St,
STE 213, Dania, FL 33004